

Handwheels / Hand Knobs

Inch and Metric

Molettes / Boutons à main

Pouce et Métrique

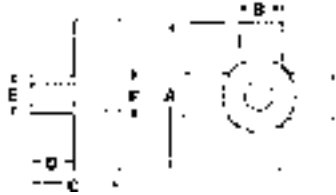
4-PRONG PLASTIC KNOBS

Black Phenolic with Brass insert

Excellent gripping action. Widely used for machines, components, clamping and consumer products.



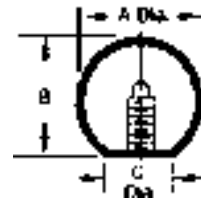
Thru Hole Brass Insert



BLACK PHENOLIC BALL KNOBS

This material is a very effective insulator for electrical and high-temperature applications (up to **149°C, 300°F**). It is virtually unaffected by water, oils, grease and most commonly encountered chemicals.

With... Tapped Brass Inserts for greater thread strength.



ROUND STYLE Inch Sizes

SPAENAUR No.	Thread Size	Dimensions		
		A	B	C
134-015	1/4"-20	3/4"	11/16"	3/8"
134-001	10-24	1"	31/32"	1/2"
134-004	1/4"-20	1"	31/32"	1/2"
134-002	5/16"-18	1"	31/32"	1/2"
134-003	3/8"-16	1"	31/32"	1/2"
134-005	1/4"-20	1-3/8"	1-19/64"	5/8"
134-006	5/16"-18	1-3/8"	1-19/64"	5/8"
134-007	3/8"-16	1-3/8"	1-19/64"	5/8"
134-008	5/16"-18	1-5/8"	1-37/64"	11/16"
134-009	3/8"-16	1-5/8"	1-37/64"	11/16"
134-010	1/2"-13	1-5/8"	1-37/64"	11/16"
134-011	3/8"-16	1-7/8"	1-51/64"	3/4"
134-012	1/2"-13	1-7/8"	1-51/64"	3/4"
134-C14-1C	5/8"-11	1-7/8"	1-51/64"	3/4"

KNURLED PLASTIC KNOB

Black Phenolic with Brass insert

Ideally suited for medium and light duty applications.



SPAENAUR No.	A	B	C	D	E	Insert		PKG QTY.
						Thread	Depth	
134-016	1-7/8"	5/16"	1"	1/2"	1"	3/8"-16	1/2"	10

TAPERED PLASTIC KNOB

Black Phenolic with Brass insert

Ideal for finger tip levers and push-pull or lid knobs.



SPAENAUR No.	A	B	C	Insert		PKG QTY.
				Thread	Depth	
134-017	3/4"	7/8"	3/8"	8-32	5/16"	10

Metric (Coarse) Thread

134-611	M10	1-3/8"	1-19/64"	5/8"
134-612	M12	1-3/8"	1-19/64"	5/8"
134-613	M12	1-7/8"	1-51/64"	3/4"
134-614	M16	1-7/8"	1-51/64"	3/4"

ALL ABOVE ITEMS - PKG QTY. 10

For more KNOBS

see pages B284, B285 & J68-J74.

