

Inch

Pouce

Sealing Washers / Insulating Washers

Rondelles d'étanchéité / Rondelles isolantes

NYLTITE ROLLED NYLON WASHERS

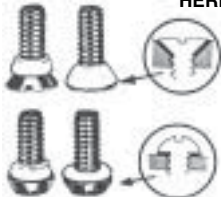


Made of DuPont Zytel which meets specs: MIL-M-20693A; MIL-P-17091-B.

Used as an insulator or sealer with bolt, screw, nail or rivet.

Screw Size	I.D.	Wall Thickness	SPAENAUR No.	PKG QTY.
1	.075"	.012"	—	100
2	.088"	.012"	W-5801	100
3	.101"	.012"	W-5802	100
4	.116"	.013"	230-W05-1C	100
5	.129"	.014"	W-5804	100
6	.142"	.015"	230-W01-1X	100
8	.168"	.015"	230-W04-1Y	100
10	.194"	.015"	W-5807	100
12	.220"	.017"	W-5808	100
1/4"	.252"	.019"	230-W02-1A	100
5/16"	.316"	.020"	W-5810	100
3/8"	.379"	.022"	W-5811	100
7/16"	.441"	.022"	W-5812	100
1/2"	.504"	.022"	W-5813	100
5/8"	.630"	.025"	W-5814	100
3/4"	.755"	.028"	W-5815	100

HERE IS HOW NYLTITE ROLLED WASHER WORKS



The Nytlite washer deforms under pressure to conform and seal with any STANDARD fastener. The nylon flows inward towards the inner cut edges, providing a positive seal around the screw threads. The rolled washers offer this positive seal because they expand and contract with surrounding materials. Note: The absence of flow outward at the rolled edge, eliminates the need for back-up washers.



SEALING WASHER

Reusable

Stainless Steel Clad, with Neoprene Sealer

SPAENAUR No.	Screw Size	O.D.	Overall Height	PKG QTY.
679-803	6	3/8"	.100"	100
679-804	8	3/8"	.085"	100
679-805	10	7/16"	.085"	100
679-A01-1K	1/4"	7/16"	.085"	100



"BARTITE" PERMANENT SEALING WASHERS

BARTITE Sealing Washer is both economical, and a permanent seal against liquids and vapors, resistant to water, gasoline, petroleum oils, salt sprays, etc.



The 300 series stainless steel washer is partially dome-shaped, with a flattened perimeter.

When under torque, the tightening creates a tension effect, which adds to the permanency of the complete assembly. Neoprene sealant with stands temperatures up to 250°F; it also retains its sealability at -60°F.

SPAENAUR No.	Thread Size	Metal O.D.	Overall Height	PKG QTY.
679-810	#8	1/2"	.065"	100
679-811	#10	9/16"	.065"	100
679-812	#14	5/8"	.073"	100
679-813	5/16"	11/16"	.077"	100
679-814	3/8"	51/64"	.082"	100
679-815	7/16"	57/64"	.090"	100
679-A02-1W	1/2"	63/64"	.090"	50

NYLTITE HEADED SLEEVE

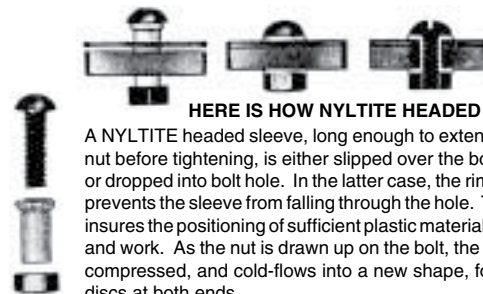


Used with bolt, screw, nail or rivet

- Provides electrical insulation.
- Eliminates electrolytic action.
- Creates a leak-proof seal.
- Acts as grommet, bearing, or housing.
- Reduces "fastener vibration".

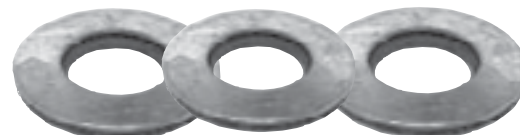
PKG QTY. 100- All Sizes

Screw Size	I.D.	Wall Thickness	1/4" Shank	1/2" Shank	3/4" Shank
1	.075	.012	W-5500		
2	.088	.012	W-5501		
3	—	—	W-5502	W-5503	
4	.116	.013	W-5504	W-5505	W-5506
5	.129	.014			
6	.142	.015	W-5510	W-5511	W-5512
8	.168	.015	W-5513	W-5514	W-5515
10	.194	.015	W-5516	W-5517	W-5518
12	.220	.017	W-5519	W-5520	W-5521
1/4"	.252	.019	W-5522	W-5523	W-5524
5/16"	.316	.020	W-5525	W-5526	W-5527
3/8"	.379	.022	W-5528	W-5529	W-5530
7/16"	.441	.022	W-5531	W-5532	W-5533
1/2"	.504	.022	W-5534	W-5535	W-5536
5/8"	.629	.025	W-5537	W-5538	W-5539
3/4"	.754	.027	W-5540	W-5541	W-5542



HERE IS HOW NYLTITE HEADED SLEEVE WORKS

A NYLTITE headed sleeve, long enough to extend from bolt head to nut before tightening, is either slipped over the bolt before insertion, or dropped into bolt hole. In the latter case, the rim-flange at one end prevents the sleeve from falling through the hole. The rim-flange also insures the positioning of sufficient plastic material between bolt head and work. As the nut is drawn up on the bolt, the NYLTITE sleeve is compressed, and cold-flows into a new shape, forming washer-like discs at both ends.



MASTER SEAL™ WASHERS

Used with Round, Pan or Hex Head Screws – as with Weather Seal Fasteners shown on page B94. Also available: High Tensile Neoprene or EPDM Bonded Washer on special orders of minimum quantities.

PKG QTY. 100

SPAENAUR No.	Screw Size	Dimensions			MATERIAL
		I.D.	O.D.	GA.	
W-227	6	5/32"	3/8"	20	Galvanized Steel bonded to Neoprene
685-005	8	11/64"	1/2"	24	
W-228	8	11/64"	1/2"	20	
W-230	10	13/64"	1/2"	20	
685-W02-1W	12	7/32"	5/8"	20	
685-002	1/4"	.275"	5/8"	20	302 Stainless Steel bonded to Neoprene
685-003	5/16"	.330"	3/4"	20	
685-W01-1K	3/8"	.434"	7/8"	20	
685-001	1/2"	.532"	1"	20	
W-2001	6	5/32"	3/8"	20	
W-2002	8	11/64"	1/2"	20	
W-2005	10	13/64"	1/2"	20	
W-2006	12	7/32"	5/8"	20	
W-2008	14	9/32"	5/8"	20	
685-006	14	.275"	1/2"	20	Galvanized Steel bonded to EPDM

CATALOG 14

SPAENAUR

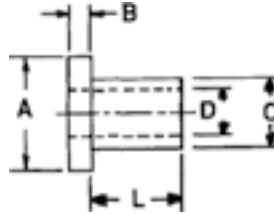
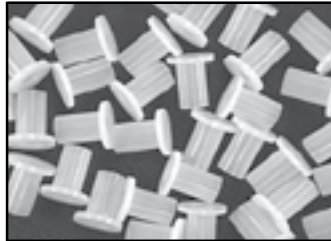
Insulating Washers

Inch

Rondelles isolantes

Pouce

NYLON MACHINE SCREW INSULATORS



Nylon screw insulators are used to isolate metal screws electrically as well as to reduce corrosion. They can be used as light load bearings in many applications.

Material 6/6 Nylon - Natural Colour

PKG QTY. 100

D

SPAENAUR No.	Screw Size	Inch Dimensions (Millimetre equivalent in brackets)				
		L	A	B	C	D
230-014	2	1/8" (3.18)	.181" (4.60)	3/64" (1.19)	.120" (3.05)	.090" (2.29)
230-015	2	3/16" (4.76)	.181" (4.60)	3/64" (1.19)	.120" (3.05)	.090" (2.29)
230-016	2	1/4" (6.35)	.181" (4.60)	3/64" (1.19)	.120" (3.05)	.090" (2.29)
230-001	4	3/64" (1.19)	.235" (5.97)	3/64" (1.19)	.145" (3.68)	.115" (2.92)
230-002	4	1/16" (1.59)	.235" (5.97)	3/64" (1.19)	.145" (3.68)	.115" (2.92)
230-003	4	3/32" (2.38)	.235" (5.97)	3/64" (1.19)	.145" (3.68)	.115" (2.92)
230-004	4	1/8" (3.18)	.235" (5.97)	3/64" (1.19)	.145" (3.68)	.115" (2.92)
230-017	4	3/16" (4.76)	.235" (5.97)	3/64" (1.19)	.145" (3.68)	.115" (2.92)
230-018	4	1/4" (6.35)	.235" (5.97)	3/64" (1.19)	.145" (3.68)	.115" (2.92)
230-005	6	1/8" (3.18)	.290" (7.37)	3/64" (1.19)	.170" (4.32)	.140" (3.56)
230-019	6	3/16" (4.76)	.290" (7.37)	3/64" (1.19)	.170" (4.32)	.140" (3.56)
230-006	6	1/4" (6.35)	.290" (7.37)	3/64" (1.19)	.170" (4.32)	.140" (3.56)
230-020	6	3/8" (9.53)	.290" (7.37)	3/64" (1.19)	.170" (4.32)	.140" (3.56)
230-007	8	1/8" (3.18)	.344" (8.74)	1/16" (1.59)	.205" (5.21)	.173" (4.39)
230-021	8	1/4" (6.35)	.344" (8.74)	1/16" (1.59)	.205" (5.21)	.173" (4.39)
230-022	8	3/8" (9.53)	.344" (8.74)	1/16" (1.59)	.205" (5.21)	.173" (4.39)
230-023	8	1/2" (12.70)	.344" (8.74)	1/16" (1.59)	.205" (5.21)	.173" (4.39)
230-024	10	3/16" (4.76)	.399" (10.13)	1/16" (1.59)	.260" (6.60)	.200" (5.08)
230-008	10	1/4" (6.35)	.399" (10.13)	1/16" (1.59)	.260" (6.60)	.200" (5.08)
230-009	10	3/8" (9.53)	.399" (10.13)	1/16" (1.59)	.260" (6.60)	.200" (5.08)
230-025	10	1/2" (12.70)	.399" (10.13)	1/16" (1.59)	.260" (6.60)	.200" (5.08)
230-026	1/4"	1/8" (3.18)	.513" (13.03)	1/16" (1.59)	.312" (7.92)	.260" (6.60)
230-010	1/4"	3/16" (4.76)	.513" (13.03)	1/16" (1.59)	.312" (7.92)	.260" (6.60)
230-027	1/4"	1/4" (6.35)	.513" (13.03)	1/16" (1.59)	.312" (7.92)	.260" (6.60)
230-011	1/4"	3/8" (9.53)	.513" (13.03)	1/16" (1.59)	.312" (7.92)	.260" (6.60)
230-012	1/4"	1/2" (12.70)	.513" (13.03)	1/16" (1.59)	.312" (7.92)	.260" (6.60)
230-028	1/4"	5/8" (15.88)	.513" (13.03)	1/16" (1.59)	.312" (7.92)	.260" (6.60)
230-029	1/4"	3/4" (19.05)	.513" (13.03)	1/16" (1.59)	.312" (7.92)	.260" (6.60)
230-030	5/16"	1/4" (6.35)	.620" (15.75)	1/16" (1.59)	.360" (9.14)	.320" (8.13)
230-013	5/16"	3/8" (9.53)	.620" (15.75)	1/16" (1.59)	.360" (9.14)	.320" (8.13)
230-031	5/16"	1/2" (12.70)	.620" (15.75)	1/16" (1.59)	.360" (9.14)	.320" (8.13)

CATALOG 14

SPAENAUR

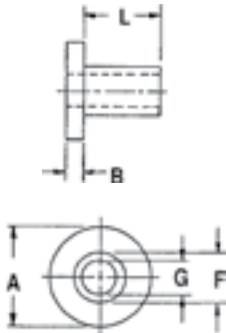
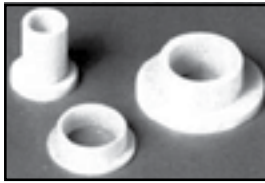
Inch

Insulating Washers

Pouce

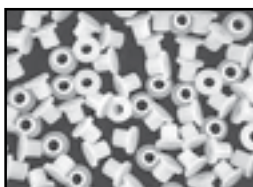
Rondelles isolantes

NYLON SHOULDER WASHERS



Material:
6/6 Nylon
Natural Colour

These washers are suitable for a variety of insulation and mechanical applications. Strong and corrosion resistant, they seal, reduce vibration, act as spacers and guides.



PKG QTY.
100

SPAENAUR No.	Inch Dimensions (Millimetre equivalent in brackets)				
	L	A	B	F	G
230-114	3/16" (4.76)	.187" (4.75)	1/32" (0.79)	.119" (3.02)	.063" (1.60)
230-115	3/16" (4.76)	.205" (5.21)	1/32" (0.79)	.125" (3.18)	.093" (2.36)
230-100	1/32" (0.79)	.218" (5.54)	3/64" (1.19)	.135" (3.43)	.115" (2.92)
230-101	1/32" (0.79)	.235" (5.97)	3/64" (1.19)	.137" (3.48)	.115" (2.92)
230-116	7/32" (5.55)	.250" (6.35)	11/64" (4.37)	.150" (3.81)	.115" (2.92)
230-102	3/64" (1.19)	.234" (5.94)	3/64" (1.19)	.147" (3.73)	.115" (2.92)
230-103	1/16" (1.59)	.250" (6.35)	1/32" (0.79)	.143" (3.63)	.115" (2.92)
230-117	1/8" (3.18)	.250" (6.35)	3/64" (1.19)	.139" (3.53)	.118" (3.00)
230-118	1/8" (3.18)	.500" (12.70)	1/8" (3.18)	.375" (9.53)	.285" (7.14)
230-119	.250" (6.35)	.250" (6.35)	.047" (1.19)	.156" (3.96)	.125" (3.18)
230-120	1/32" (0.79)	.252" (6.40)	1/32" (0.79)	.186" (4.72)	.140" (3.56)
230-121	1/8" (3.18)	.281" (7.14)	3/32" (2.38)	.158" (4.01)	.093" (2.36)
230-104	1/64" (0.41)	.310" (7.87)	1/16" (1.59)	.183" (4.65)	.139" (3.53)
230-122	3/64" (1.19)	.312" (7.93)	1/16" (1.59)	.170" (4.32)	.127" (3.23)
230-123	3/16" (4.76)	.312" (7.93)	1/16" (1.59)	.250" (6.35)	.156" (3.96)
230-105	3/64" (1.19)	.250" (6.35)	3/64" (1.19)	.143" (3.63)	.113" (2.87)
230-106	1/32" (0.79)	.265" (6.73)	1/32" (0.79)	.157" (3.99)	.126" (3.20)
230-107	1/32" (0.79)	.312" (7.93)	1/16" (1.59)	.187" (4.75)	.141" (3.58)
230-124	5/16" (7.94)	.312" (7.93)	1/32" (0.79)	.154" (3.91)	.130" (3.30)
230-W03-1P	1/4" (6.35)	.290" (7.37)	3/64" (1.19)	.170" (4.32)	.140" (3.56)
230-108	3/64" (1.19)	.328" (8.33)	3/64" (1.19)	.218" (5.54)	.146" (3.71)
230-126	3/8" (9.53)	.345" (8.76)	1/16" (1.59)	.205" (5.21)	.173" (4.39)
230-127	13/32" (10.32)	.510" (12.95)	1/16" (1.59)	.250" (6.35)	.171" (4.34)
230-128	1/8" (3.18)	.375" (9.53)	1/16" (1.59)	.280" (7.11)	.201" (5.10)
230-109	3/64" (1.19)	.375" (9.53)	3/64" (1.19)	.245" (6.22)	.192" (4.88)
230-110	1/32" (0.79)	.375" (9.53)	1/16" (1.59)	.308" (7.82)	.196" (4.98)
230-129	1/8" (3.18)	.370" (9.40)	.110" (2.79)	.307" (7.80)	.255" (6.48)
230-111	1/32" (0.79)	.385" (9.78)	1/16" (1.59)	.240" (6.10)	.145" (3.68)
230-W06-1N	3/32" (2.38)	.375" (9.53)	1/64" (0.41)	.185" (4.70)	.140" (3.56)
230-131	1/8" (3.18)	.433" (10.99)	1/16" (1.59)	.312" (7.92)	.199" (5.05)
230-132	1/8" (3.18)	.400" (10.16)	1/8" (3.18)	.275" (6.99)	.140" (3.56)
230-133	3/32" (2.38)	.438" (11.13)	1/32" (0.79)	.267" (6.78)	.203" (5.16)
230-134	.187" (4.75)	.495" (12.57)	.065" (1.65)	.312" (7.92)	.200" (5.08)
230-135	1/8" (3.18)	.697" (17.70)	1/16" (1.59)	.359" (9.12)	.266" (6.76)
230-112	3/64" (1.19)	.625" (15.88)	1/16" (1.59)	.375" (9.53)	.190" (4.83)
230-113	5/16" (7.94)	.500" (12.70)	1/16" (1.59)	.312" (7.92)	.200" (5.08)
230-136	3/16" (4.76)	.490" (12.45)	1/4" (6.35)	.310" (7.87)	.195" (4.95)
230-137	1/8" (3.18)	.502" (12.75)	1/32" (0.79)	.399" (10.13)	.349" (8.86)
230-W07-1T	9/64" (3.58)	.515" (13.08)	1/16" (1.59)	.312" (7.93)	.260" (6.60)
230-139	.062" (1.57)	.625" (15.88)	1/32" (0.79)	.310" (7.87)	.195" (4.95)
230-140	1/2" (12.70)	.620" (15.75)	1/16" (1.59)	.370" (9.40)	.316" (8.03)
230-141	3/8" (9.53)	.687" (17.45)	3/8" (9.53)	.359" (9.12)	.263" (6.68)
230-142	3/16" (4.76)	.743" (18.87)	1/16" (1.59)	.443" (11.25)	.375" (9.53)
230-143	1/4" (3.38)	.750" (19.05)	5/64" (1.98)	.505" (12.83)	.378" (9.60)
230-144	7/32" (5.55)	.750" (19.05)	3/32" (2.38)	.380" (9.65)	.266" (6.76)
230-145	1" (25.40)	.875" (22.23)	1/16" (1.59)	.500" (12.70)	.375" (9.53)
230-147	1/2" (12.70)	7/8" (22.23)	1/16" (1.59)	3/4" (19.05)	.635" (16.13)
230-146	3/4" (19.05)	1.000" (25.40)	1/8" (3.18)	.500" (12.70)	.375" (9.53)