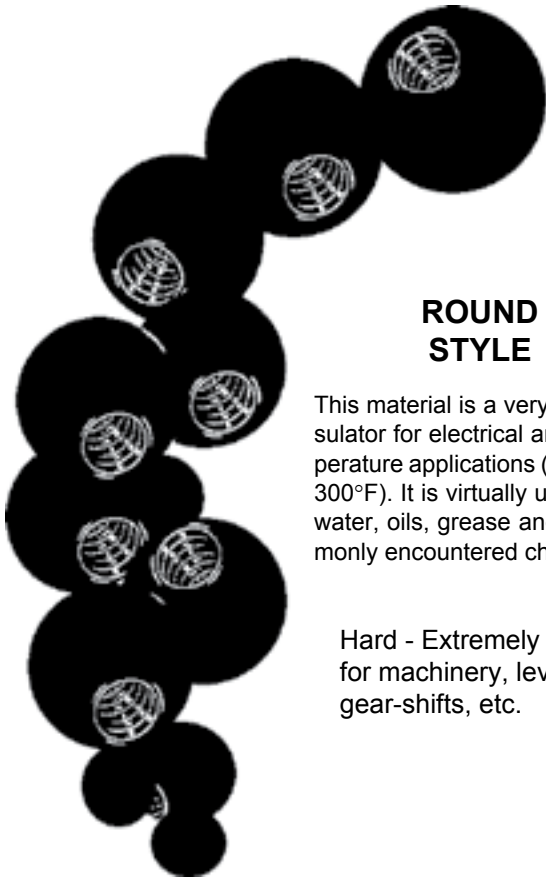


Inch and Metric

Hand Knobs

Pouce et Métrique

Boutons à main



ROUND STYLE

This material is a very effective insulator for electrical and high-temperature applications (up to **149°C**, 300°F). It is virtually unaffected by water, oils, grease and most commonly encountered chemicals.

Hard - Extremely Tough for machinery, levers, gear-shifts, etc.

BLACK PHENOLIC BALL KNOBS

Inch Sizes

SPAENAUR No.	Outside Dia.	Thread Size	Depth of Thread
134-C11-1A	1"	10-24	1/2"
134-209	1"	1/4"-20	1/2"
134-C03-1N	1"	5/16"-18	1/2"
134-C04-1T	1-1/4"	3/8"-16	3/4"
134-066	1-3/8"	1/4"-20	1/2"
134-C13-1Y	1-3/8"	3/8"-16	5/8"
K-54	1-7/8"	3/8"-16	1-1/4"
134-C15-1N	1-7/8"	1/2"-13	3/4"
K-54-1	1-7/8"	5/8"-18	7/8"

Metric (Coarse) Thread

134-604	1-5/8"	M16	1"
134-605	1-7/8"	M12	1"
134-607	1-7/8"	M16	7/8"

PKG QTY. 10

See page J82 for Round Style with Tapped Brass Inserts.

PEAR SHAPE

PKG QTY. 10

Inch Sizes

SPAENAUR No.	Outside Dia.	Thread Size	Depth of Thread
134-C16-1T	1-5/8"	3/8"-16	1-1/8"
134-C17-1K	1-5/8"	1/2"-13	1-1/8"



Handwheels / Hand Knobs

Inch and Metric

Molettes / Boutons à main

Pouce et Métrique

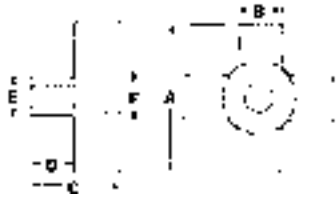
4-PRONG PLASTIC KNOBS

Black Phenolic with Brass insert

Excellent gripping action. Widely used for machines, components, clamping and consumer products.



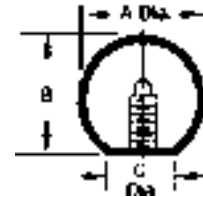
Thru Hole Brass Insert



BLACK PHENOLIC BALL KNOBS

This material is a very effective insulator for electrical and high-temperature applications (up to **149°C, 300°F**). It is virtually unaffected by water, oils, grease and most commonly encountered chemicals.

With... Tapped Brass Inserts for greater thread strength.



ROUND STYLE Inch Sizes

SPAENAUR No.	Thread Size	Dimensions		
		A	B	C
134-015	1/4"-20	3/4"	11/16"	3/8"
134-001	10-24	1"	31/32"	1/2"
134-004	1/4"-20	1"	31/32"	1/2"
134-002	5/16"-18	1"	31/32"	1/2"
134-003	3/8"-16	1"	31/32"	1/2"
134-005	1/4"-20	1-3/8"	1-19/64"	5/8"
134-006	5/16"-18	1-3/8"	1-19/64"	5/8"
134-007	3/8"-16	1-3/8"	1-19/64"	5/8"
134-008	5/16"-18	1-5/8"	1-37/64"	11/16"
134-009	3/8"-16	1-5/8"	1-37/64"	11/16"
134-010	1/2"-13	1-5/8"	1-37/64"	11/16"
134-011	3/8"-16	1-7/8"	1-51/64"	3/4"
134-012	1/2"-13	1-7/8"	1-51/64"	3/4"
134-C14-1C	5/8"-11	1-7/8"	1-51/64"	3/4"

KNURLED PLASTIC KNOB

Black Phenolic with Brass insert

Ideally suited for medium and light duty applications.



SPAENAUR No.	A	B	C	D	E	Insert		PKG QTY.
						Thread	Depth	
134-016	1-7/8"	5/16"	1"	1/2"	1"	3/8"-16	1/2"	10

TAPERED PLASTIC KNOB

Black Phenolic with Brass insert

Ideal for finger tip levers and push-pull or lid knobs.



SPAENAUR No.	A	B	C	Insert		PKG QTY.
				Thread	Depth	
134-017	3/4"	7/8"	3/8"	8-32	5/16"	10

Metric (Coarse) Thread

134-611	M10	1-3/8"	1-19/64"	5/8"
134-612	M12	1-3/8"	1-19/64"	5/8"
134-613	M12	1-7/8"	1-51/64"	3/4"
134-614	M16	1-7/8"	1-51/64"	3/4"

ALL ABOVE ITEMS - PKG QTY. 10

For more KNOBS see pages B284, B285 & J68-J74.

