

Anti-Vibration Mounts / Impact Bumpers

Inch

Supports antivibratoires / Butoirs amortissants

Pouce

315-H34-2W (SBR)

BOLT
3/8" -16 Thread

1 3/4"

2 7/16"

1 9/16"

1/4"-20

5/8"

10-32

3"

1 3/8"

3"

1"

3"

1"

315-635 (Natural) **315-637 (Natural)** **315-631 (Natural)**

J

1 3/32"

2"

2 3/8"

2"

Bolt
Protrudes
3/4"

315-G41-1W 3/8"-16 Thread
315-043 3/8"-24 Thread
Natural Ruber Black, 40-50 Duro

8-32

5/16"-18

3/4"

9/16"

1/2"

7/8"

1 1/4"

1 3/8"

315-638 (Natural) **315-634 (Natural)**

10-32

10-32

9/16"

1/2"

1 1/4"

1 1/8"

1"

5/8"

1 1/2"

315-636 (Natural) **315-G45-1P (Natural)**

315-654
Double-Ended Anti-Vibration Mount

3"

3/4"

1 1/8"

1 1/8"

3/8"-16 Thread

50 Durometer
BLACK NEOPRENE
2" Dia. x 3" Overall Length
STEEL STUDS (ZINC PLATED)
3/8"-16 Thread x 1-1/8" Protruding

2"

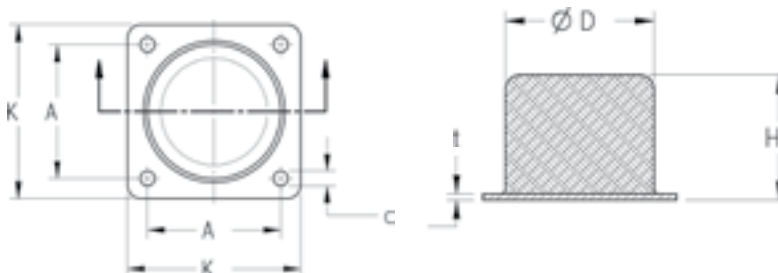
CATALOG 14

SPAENAUR

IMPACT BUMPERS

Applications

- Railroad
- Railroad Wagons
- Light & Heavy Construction Equipment
- Construction Cranes
- Overhead Cranes
- Lifting Cranes



CHARACTERISTICS AND CAPABILITIES

Shock absorption: Impact Bumpers will absorb small and large impacts to protect building structures, frames and equipment. The rubber is developed to ensure to absorb the energy created by the impact.

IMPACT BUMPERS (ADVANCED DESIGN)

Design: The design of the Impact Bumpers are developed to absorb shock and forces in compression. The 4-hole metal baseplate is advantageous for easy installation and quick replacements.

Load Capacity: Standard sizes in different rubber hardness scales are available for most application in a range from **6 kN** (1,350 lbs) and up to **207 kN** (46,500 lbs) load.

Maintenance Free and Long Term Durability: The special designed standard rubber compound is developed for high impacts for static applications. Special developed compounds for custom applications are available upon request.



Spaenaur No.	Diameter x Height mm (Inch) (D) x (H)	Hole Separation mm (Inch) (A)	Plate Size mm (Inch) (K)	Thickness mm (Inch) (t)	Hole Dia. mm (Inch) (d)	Quality		Max. Static Compression Force (vertical)	
						ShoreA Duro	Elastomer	kN	lbs
314-F41-2C	50 x 43	50	70	3	7	43	NR	6	1349
	(1.97) x (1.69)	(1.97)	(2.76)	(.12)	(.28)	57		8	1798
						68		9	2068
314-F46-1M	75 x 63	75	100	3	9	43	NR	15	3372
	(2.95) x (2.48)	(2.95)	(3.94)	(.12)	(.35)	57		20	4496
						68		23	5171
314-F42-2N	100 x 84	100	130	4	11	43	NR	31	6913
	(3.94) x (3.31)	(3.94)	(5.12)	(.16)	(.43)	57		41	9217
						68		47	10600
314-F47-1X	150 x 126	150	100	3	9	43	NR	68	15175
	(5.91) x (4.96)	(5.91)	(3.94)	(.12)	(.35)	57		90	20233
						68		104	23268
314-F37-2P	100 x 84	100	130	4	11	43	NR	135	30349
	(3.94) x (3.31)	(3.94)	(5.12)	(.16)	(.43)	57		180	40466
						68		207	46535