

Inch and Metric
Pouce et Métrique

On-sert

On-Serts / Applicator Tools
Douilles On-Serts / Outils d'applicateur d'insert fileté



STEEL (With protective finish)

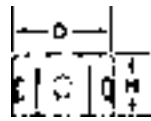
INCH SIZES

These distinctive fasteners, with a single helical thread, slip over hollow plastic bosses and prevent splitting when screws are driven. They also prevent cross-threading, and resist screw pull-out, yet screws may be removed without harming the fasteners or the boss. On-sert fasteners thus perform the same function as solid inserts, but cost only about one-fifth as much. One type is used when screws enter the top of a boss, while another type is used when screws enter the bottom of the boss.

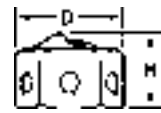
On-Serts® They fit "ON THE BOSS"

PKG QTY. 100 - ALL ON-SERTS

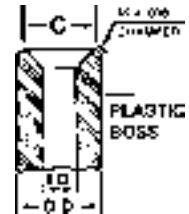
| Metric Thread Size | Inch Thread Size | (see Note 1) SPAENAUR No. | ON-SERT FASTENERS | | | | PLASTIC BOSS | | | SPAENAUR No. Applicator Tool (see Note 3) |
|--------------------|------------------|---------------------------|-------------------|----------------|--------------|----------------------|--------------|-------------------------|----------------------------|---|
| | | | Design | Height H (In.) | Dia. D (In.) | Weight Lbs./M Pieces | O.D. (In.) | I.D. (In.) (see Note 2) | Min. Dia. of Ctsk. C (In.) | |
| 3.5mm | 4-40 | 628-001 | 1 | .220 | .284 | 1.0 | .247-.253 | .096-.100 | .180 | 876-278 |
| 3.5mm | 6-20 & 6-18 | 628-003 | 1 | .230 | .354 | 1.5 | .309-.315 | .116-.120 | .250 | 876-280 |
| 4.2mm | 8-18 & 8-15 | 628-005 | 1 | .230 | .354 | 1.4 | | .140-.144 | .290 | 876-281 |
| 4.2mm | 8-18 & 8-15 | 628-B78-1T | 1 | .230 | .328 | 1.3 | .279-.285 | .140-.144 | .220 | 876-280 |
| 4.2mm | 8-18 & 8-15 | 628-007 | 1 | .260 | .544 | 3.5 | .497-.503 | .140-.144 | .290 | 876-284 |
| 4.2mm | 8-18 & 8-15 | 628-008 | 1 | .254 | .556 | 3.0 | .509-.515 | .140-.144 | .290 | 876-285 |
| 4.2mm | 8-18 & 8-15 | 628-009 | 1 | .220 | .422 | 1.9 | .372-.378 | .140-.144 | .290 | 876-282 |
| | | 628-010 | 2 | .280 | .422 | 1.9 | | .185-.250 | none | 876-286 |
| 4.2mm | 8-32 | 628-011 | 1 | .220 | .422 | 1.9 | | .140-.144 | .290 | 876-283 |
| 4.8mm | 10-12 & 10-16 | 628-013 | 1 | .230 | .422 | 1.8 | | .160-.164 | .290 | 876-282 |



Design 1
Screw enters through top of boss



Design 2
Screw enters through bottom of boss



NOTE 1. The thread form of Parts 628-001 and 628-011 is designed to accept either a machine screw or Type F Tapping Screw of the thread size designated. Each of the other parts accommodates a Tapping Screw of the size indicated.

NOTE 2. For maximum screw pull-out resistance with Design 1 parts, the boss I.D. should be as specified above to provide an interference fit with the screw. On-sert fasteners can also be used where the screw clears the I.D. of the boss, but this arrangement reduces resistance to screw pull-out.

NOTE 3. Design 2 parts should always be installed with the appropriate applicator tool which is designed to protect the projecting thread form from deformation by pressure or a direct blow. Although Design 1 parts may be installed by tapping directly on the top of the fasteners with a hammer, the magnetized applicator tool facilitates handling and positioning.

On-Sert® APPLICATOR TOOLS



Style 2



Style 3



Style 4

Tools
PKG QTY. 1

| SPAENAUR No. | | Style No. | Overall Length L | Bolt Clearance Depth | Dia. D |
|--------------|---------|-----------|------------------|----------------------|--------|
| Fastener | Tool | | | | |
| 628-001 | 876-278 | 2 | 3" | Not applicable | 1/2" |
| 628-003 | 876-280 | 2 | 3" | | 1/2" |
| 628-005 | 876-281 | 4 | 3" | | 1/2" |
| 628-B78-1T | 876-280 | 2 | 3" | 3/4" | 1/2" |
| 628-007 | 876-284 | 2 | 3" | | 3/4" |
| 628-008 | 876-285 | 4 | 3" | | 3/4" |
| 628-009 | 876-282 | 2 | 3" | 1-1/4" | 5/8" |
| 628-010 | 876-286 | 3 | 1-13/16" | | .615" |
| 628-011 | 876-283 | 4 | 3" | N/A | 5/8" |
| 628-013 | 876-282 | 2 | 3" | N/A | 5/8" |