

Clevis Pins / Dowel Pins

Inch

Axes de chape / Goupilles cylindriques

Pouce

UNIVERSAL CLEVIS PINS

C1018 Steel - Trivalent Zinc Plated (Not Hardened)



*C1010 Steel

PKG QTY. 10

(Number of holes may vary)

SPAENAUR No.	Dia.	Length Under Head	Dia. of Holes
233-F99-1P	1/4"	2"	7/64"
233-F91-1C	5/16"	2"	7/64"
233-F55-2T	3/8"	2"	9/64"
233-F56-2K	7/16"	2"	5/32"
233-F07-1W	7/16"	2-1/2"	5/32"
233-F57-1W	7/16"	3"	5/32"
233-F58-2M	1/2"	2"	5/32"
*233-F96-1M	1/2"	2-1/2"	5/32"
233-F59-1M	1/2"	3"	5/32"
233-F64-2Y	5/8"	3"	5/32"
233-F60-2A	3/4"	3"	5/32"

MISCELLANEOUS CLEVIS PINS

SPAENAUR No. B-1679

C-1008 Hardened STEEL Zinc Plated

Use with Hairpin Cotter on Page E60 No. B-1717



Pin diameter: 1/4"
Effective length: 7/16"



Groove Dia: 3/16"

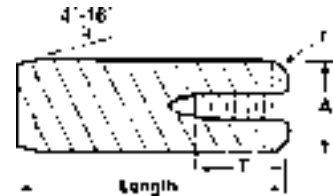
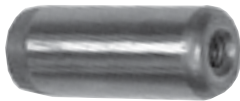
PKG QTY. 50

DOWEL PULL PINS

with Internal Threads

SPECIFICATIONS:

Material: Alloy steel, case-hardened to 58-62 Rockwell C Scale
Precision ground: .0002 over nominal ±.0001
Surface finish: 8 Micro. In. Max.



NOM. O.D.	1/4"	5/16"	3/8"	7/16"	1/2"	5/8"	3/4"	1"	
A	.2501-.2503	.3126-.3128	.3751-.3753	.4376-.4378	.5001-.5003	.6251-.6253	.7501-.7503	1.0001-1.0003	
INSIDE TAP	8-32	10-32	10-32	1/4"-20	1/4"-20	1/4"-20	5/16"-18	5/16"-18	
T	21/64"	21/64"	3/8"	1/2"	1/2"	1/2"	5/8"	3/4"	
r	1/16"	1/16"	5/64"	3/32"	7/64"	1/8"	1/8"	1/8"	
Length	ORDER BY SPAENAUR No's. LISTED BELOW								
3/4"	238-D13-1K	238-1354	238-C35-1X	238-1366	238-1367	238-1372			
1"	238-1351	238-1355	238-1359	238-1363					
1-1/4"		238-1349							
1-1/2"	238-1352	238-C20-1K	238-1360	238-1364	238-1368	238-1373	238-1375		
1-3/4"		238-1349							
2"	238-1353	238-1357	238-1361	238-1365	238-1369	238-1374	238-1376	238-1378	
2-1/2"			238-1362		238-1370		238-C22-1M		
3"					238-1371			238-1379	
3-1/2"								238-1383	
4"			Contact Sales Desk For Package Quantities						238-1384
5"								238-1385	

More INCH DOWEL PINS on page E82

See our full line of Hairpin Clips and Assortments on Page E60

Inch

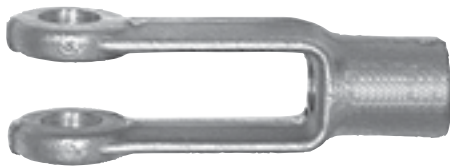
Yokes & Jaw Fittings

Pouce

Raccords fourches et mâchoires

STEEL

DROP FORGED

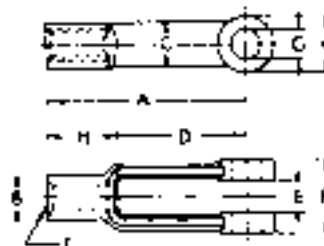


**ADJUSTABLE YOKE ENDS
(ROD ENDS or CLEVIS YOKES)**

Drop forged and machined steel - plain finish.
Fine thread UNF-2,
Right-hand.

S.A.E. Standard -
Light Series

PKG QTY. 5 (One Size)



SPAENAUR No.	T-Thread	DIMENSIONS IN INCHES										Use With	
		A	B	C	D	E	F	G	H	K	Clevis Pin No.	Cotter Pin No.	
B-1934	1/4"-28 NF	2"	7/16"	7/16"	1 1/4"	9/32"	5/8"	1/4"	3/4"	1/2"	233-003	CP-1	
B-1935	5/16"-24 NF	2 1/4"	1/2"	1/2"	1 7/16"	1 1/32"	3/4"	5/16"	13/16"	19/32"	233-004	CP-9	
B-1936	3/8"-24 NF	2 1/2"	5/8"	5/8"	1 5/8"	7/16"	7/8"	3/8"	7/8"	1 1/16"	233-005	CP-9	
*B-1937YZ	7/16"-20 NF	2 7/8"	23/32"	23/32"	1 7/8"	1/2"	1"	7/16"	1"	13/16"	233-006	CP-108	
B-1938	1/2"-20 NF	3"	13/16"	13/16"	1 7/8"	9/16"	1 1/8"	1/2"	1 1/8"	15/16"	233-007	CP-17	
699-030	5/8"-18 NF	4 15/16"	1 1/16"	1 1/16"	3 11/16"	1 1/16"	1 3/8"	5/8"	1 1/4"	1 3/16"	233-008	CP-17	
699-031	3/4"-16 NF	6 1/16"	1 1/4"	1 1/4"	4 9/16"	13/16"	1 5/8"	3/4"	1 1/2"	1 7/16"	233-009	CP-25	

*Yellow Zinc

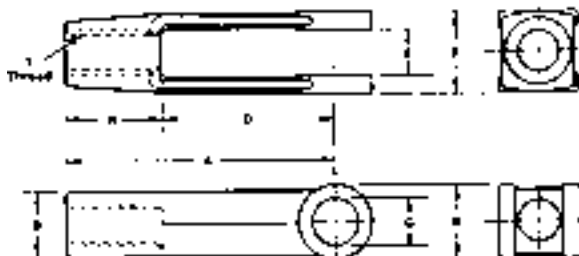
Clevis Pins and Cotter Pins must be ordered separately.

Fiberglass Reinforced YOKES with spring steel inserts



Right-hand UNF - 2B thread.

Dimensions to
S.A.E. Standards.



Made of a special compound composed of 40% fiberglass and 60% nylon, with heat treated, spring steel reinforced inserts. The metal insert makes the yoke unusually strong.

Made in black only, the yoke has 5 dimensional variations to accommodate rod diameters from 10-32 through 1/2"-20.

STRONG — LIGHT WEIGHT

SPAENAUR No.	T-Thread	DIMENSIONS IN INCHES										Use With	
		A	B	D	E	F	G	H	K	Clevis Pin No.	Cotter Pin No.		
695-001	10-32 NF	1 9/16"	5/16"	1"	3/16"	7/16"	3/16"	9/16"	3/8"	233-002	CP-1		
695-002	1/4"-28 NF	2"	7/16"	1 1/4"	9/32"	5/8"	1/4"	3/4"	1/2"	233-003	CP-1		
695-003	5/16"-24 NF	2 1/4"	1/2"	1 7/16"	1 1/32"	3/4"	5/16"	13/16"	19/32"	233-004	CP-9		
695-004	3/8"-24 NF	2 1/2"	5/8"	1 5/8"	7/16"	7/8"	3/8"	57/64"	1 1/16"	233-005	CP-9		
695-005	1/2"-20 NF	3"	13/16"	1 7/8"	9/16"	1 1/8"	1/2"	1 1/8"	15/16"	233-007	CP-17		

PKG QTY. 5 (One Size)

Clevis Pins and Cotter Pins must be ordered separately.

More ROD ENDS on pages B271 and B272
More CLEVIS and COTTER PINS on pages E43 and E77.

CATALOG 14

SPAENAUR

Dowel Pins

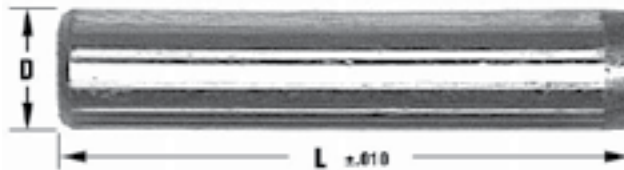
Inch

Goupilles cylindrique

Pouce

ALLOY STEEL

Not Plated
DOWEL PINS
Precision ground
Case-hardened

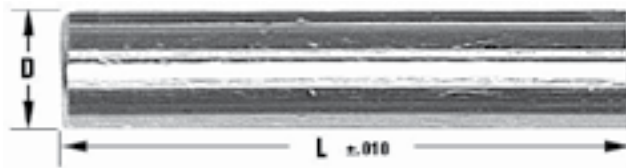


Nom. Dia.	1/16"	3/32"	1/8"	3/16"	1/4"	5/16"	3/8"	7/16"	1/2"	Additional Sizes available
Max. D	.0628"	.0941"	.1253"	.1878"	.2503"	.3128"	.3753"	.4378"	.5003"	available
Min. D	.0626"	.0939"	.1251"	.1876"	.2501"	.3126"	.3751"	.4376"	.5001"	
Lengths	ORDER BY SPAENAUR NUMBERS LISTED BELOW									
1/4	238-1338		238-1310							5/8" Nom. Dia. Max. D .62553" Min. D .6251"
3/8	238-1339	238-C34-1M	238-C47-1X							
1/2		238-1344	238-019	238-028	238-037	238-049	238-061			238-1387 Length 3/4"
5/8			238-020	238-029	238-038	238-050	238-062		238-1386	
3/4		238-D12-1T	238-021	238-030	238-C24-1A	238-051	238-063			238-091 Length 3"
7/8			238-022	238-031	238-040	238-052	238-064			
1	238-1342		238-023	238-032	238-041	238-053	238-065	238-073	238-081	238-048 Length 3-1/2"
1-1/4		238-1346	238-024	238-033	238-042	238-054	238-066	238-074	238-082	
1-1/2			238-025	238-034	238-043	238-055	238-067	238-075	238-083	3/4" Nom. Dia. Max. D .7503" Min. D .7501"
1-3/4				238-035	238-044	238-056	238-068	238-076	238-084	
2			238-027	238-036	238-D19-1Y	238-057	238-069	238-077	238-085	238-C43-1T Length 1-1/2"
2-1/4					238-D05-1A	238-058	238-070		238-086	
2-1/2					238-047	238-059	238-071	238-079	238-087	238-1380 Length 3"
2-3/4					238-002	238-1382			238-1381	
3			238-090		238-003	238-060	238-072	238-080	238-088	
4					238-092				238-089	
	PKG QTY. 100							PKG QTY. 20		PKG QTY. 10

Precision ground after hardening to ±.0001" O.D. Surface Finish - 8 Micro In. max. Material - Tough Alloy
Heat Treat - Case-hardened - RC 58-62 at surface, Case Depth - 1/8 dia. and up: .020-.030,
under 1/8 dia.: .010-.020, Core Hardness - RC 50-54.

18-8 Stainless Steel
DOWEL PINS

Precision ground



Nom. Dia.	1/8"	3/16"	1/4"	5/16"	3/8"	1/2"	Additional Sizes available
Max. D	.1253"	.1878"	.2503"	.3128"	.3753"	.5003"	available
Min. D	.1251"	.1876"	.2501"	.3126"	.3751"	.5001"	
Lengths	ORDER BY SPAENAUR NUMBERS LISTED BELOW						
1/4	238-802						1/2" PKG QTY. 20 Max. D .5000" Min. D .4999" Length - 1.00"
3/8	238-803	238-C41-1C					
1/2	238-C44-1K	238-808	238-812				▲238-801
3/4	238-805	238-C56-1K	238-813	238-817	238-C54-1N		
1	238-806	238-810	238-C30-1N	238-C40-1Y	238-822	238-825	
1-1/4	238-829						
1-1/2		238-C45-1W	238-815	238-C31-1T	238-823	238-826	
2			238-816	238-820	238-C28-1N	238-827	
	PKG QTY. 100			PKG QTY. 50		PKG QTY. 25	
Tolerance - .002 oversize, Double Chanfer - 45 Degree				▲ 303 Stainless Steel 8620 Steel, Plain Finish			

Inch and Metric

Dowel Pin Assortments

Pouce et Métrique

Assortiments de goujons de guidage

ASSORTMENT
ASSORTIMENT **805-484**

DIN 6325

METRIC
DOWEL PINS
STEEL, Not Plated

Precision ground Tol.
M6 - HARDENED
HRC 60 ±2

24 SIZES
410 PIECES



Spaenaur No.	Outside Diameter	Pin Length	Qty.	Page	
238-101	1.5mm	8mm	25	E84	
238-102		12mm			
238-D15-1M	2.0mm	10mm			
238-108		16mm			
238-115	3.0mm	12mm			
238-117		16mm			
238-119		20mm			
238-125	4.0mm	10mm			20
238-127		14mm			
238-129		18mm			
238-137	5.0mm	12mm	15		
238-139		16mm			
238-C16-1N	6.0mm	20mm			
238-145		16mm			
238-149	8.0mm	28mm		10	
238-150		30mm			
238-160		20mm			
238-163	10.0mm	30mm			
238-166		40mm			
238-177	12.0mm	30mm			
238-180		40mm			
238-182	12.0mm	50mm			
238-195		60mm			
238-196					

Assortment comes in a REGULAR SIZE welded steel drawer with hinged lid, and finished in Grey enamel. Drawer will fit Slide Racks shown on page A2
Shipping Weight: **4.55 kg** (10.04W lb.)

ASSORTMENT
ASSORTIMENT **805-476**

INCH SIZES
DOWEL PINS
Alloy Steel
Not Plated

Precision Ground
Case-hardened

24 Sizes
410 Pieces



Shipping Weight:
5.1 kg (11.25 lbs.)

Spaenaur No.	Outside Diameter	Pin Length	Qty.	Page	
238-019	1/8"	1/2"	25	E82	
238-023		1"			
238-025		1-1/2"			
238-028	3/16"	5/8"			
238-030		7/8"			
238-032		1-1/4"			
238-034	1/4"	1-3/4"			20
238-036		1/2"			15
238-037		5/8"			25
238-C24-1A	1/4"	3/4"			20
238-042		1-3/4"	15		
238-D19-1Y		2"			
238-043	2-1/2"				
238-049	5/16"	1"			
238-051		1-1/2"			
238-053		2"			
238-055	3/8"	2-1/2"		10	
238-057		1/2"			
238-062		1-1/4"			
238-065	7/16"	2"		10	
238-068		3"			
238-069		1"			
238-073	1/2"	2"	10		
238-077		1-1/4"			

Assortments come in a REGULAR SIZE welded steel drawer with hinged lid, and finished in Grey enamel. Drawers will fit into the slide Racks shown on page A2

ASSORTMENT
ASSORTIMENT **805-473**

METRIC
DOWEL PINS
Steel
Not Plated

M6 Tolerance
Not Hardened

24 Sizes
410 Pieces



DIN 7

Outside Diameter	Spaenaur No.	Pin Length	Qty.	Page	
3mm	238-205	16mm	25	E86	
	238-206	20mm			
	238-208	30mm			
	238-209	36mm			
	238-213	14mm			
4mm	238-215	20mm			20
	238-217	30mm			
	238-219	40mm			
	238-223	20mm			
5mm	238-225	30mm			10
	238-227	40mm			
	238-229	50mm			
6mm	238-232	14mm	15		
	238-235	20mm			
	238-238	30mm			
	238-240	40mm			
8mm	238-246	20mm	10	E87	
	238-248	30mm			
	238-250	40mm			
	238-252	50mm			
	238-255	20mm			
10mm	238-256	30mm	10		
	238-257	40mm			
	238-258	60mm			

Dowel Pins

Goupilles cylindrique

Metric

Métrique



Metric DOWEL PINS – Steel

HARDENED – Not Plated

DIN 6325

This Standard has been replaced.
Please see Catalog Page R21 for
more information.

Precision Ground Tol. m6

HRC 60 ±2

Nom. Dia.	1 mm	1.5 mm	2 mm	2.5 mm	3 mm	4 mm
Length (mm)	ORDER BY SPAENAUR NUMBERS LISTED BELOW					
4	238-280	238-286	238-1335			
5	238-281	238-D07-1Y	238-298			
6	238-282	238-100	238-103	238-272	238-112	238-978
8	238-283	238-101	238-104	238-960	238-113	238-124
10	238-284	238-265	238-D15-1M	238-961	238-D03-1M	238-125
12	238-099	238-102	238-106	238-962	238-115	238-126
14		238-288	238-107	238-963	238-116	238-127
16		238-289	238-108	238-964	238-117	238-128
18		238-290	238-109	238-965	238-118	238-129
20		238-291	238-110	238-959	238-119	238-130
22			238-C39-1C			
24		238-292	238-299	238-270	238-120	238-131
26						238-979
28		238-293	238-798	238-285	238-973	238-132
30		238-294	238-799	238-966	238-121	238-133
32			238-957	238-967	238-122	238-980
36		238-296	238-958	238-968	238-974	238-981
40		238-297	238-111	238-969	238-C48-1A	238-C14-1Y
45				238-970	238-975	238-982
50				238-971	238-976	238-C29-1T
60					238-977	238-983
70						238-984
80						238-985
	PKG QTY. 100					

Continued on next page...

For Dowel Pull Pins with Internal Threads see page E80

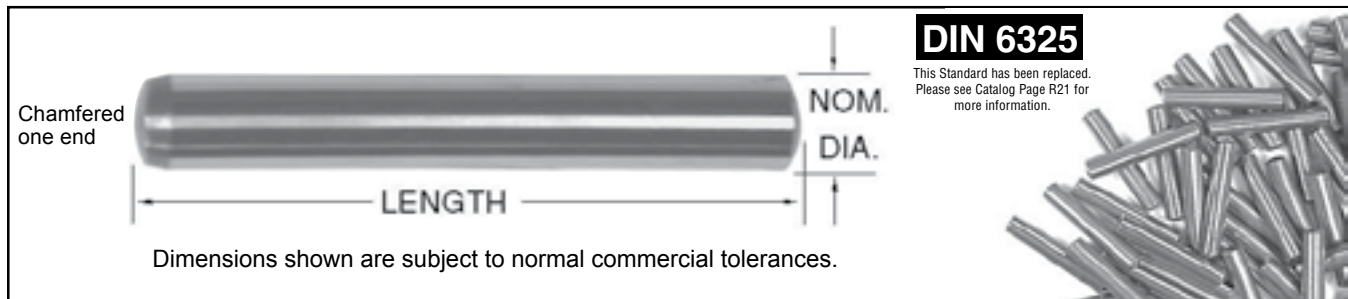


Metric

Dowel Pins

Métrique

Goupilles cylindrique



... Continued from previous page

Nom. Dia.	5 mm	6 mm	8 mm	10 mm	12 mm	16 mm	20 mm
Length (mm)	ORDER BY SPAENAUR NUMBERS LISTED BELOW						
8	238-986						
10	238-136	238-142					
12	238-137	238-143					
14	238-138	238-144	238-157				
16	238-139	238-145	238-158	238-173			
18	238-140	238-146	238-159	238-266			
20	238-C16-1N	238-147	238-160	238-174	238-188		
24	238-D14-1W	238-148	238-161	238-175	238-189		
28	238-988	238-149	238-162	238-176	238-190		
30	238-989	238-150	238-163	238-177	238-191		
32	238-990	238-151	238-164	238-178	238-192	*238-017	
36	238-991	238-C32-1K	238-165	238-C18-1K	238-1008	238-1013	
40	238-992	238-153	238-166	238-180	238-193	238-268	238-273
45	238-993	238-154	238-167	238-181	238-194	238-269	238-1023
50	238-994	238-998	238-168	238-182	238-195	238-1014	238-1024
55		238-004	238-1003	238-1006	238-1009	238-1015	
60	238-995	238-155	238-169	238-183	238-196	238-1016	238-1025
70	238-996	238-156	238-170	238-184	238-197	238-1017	238-267
80	238-997	238-999	238-171	238-185	238-198	238-1018	238-1026
90		238-1000	238-1004	238-1007	238-1010	238-1019	238-1027
100		238-1001	238-172	238-186	238-199	238-1020	238-1028
120		238-1002	238-1005	238-187	238-1011	238-1021	238-1029
	PKG QTY. 100		PKG QTY. 50	PKG QTY. 25		PKG QTY. 10	

* PKG QTY 25

For Metric Dowel Pins with Internal Thread See page E95.

See our line of Metric Reamers on Pages P45-P49

Dowel Pins / Taper Pins

Metric

Goupilles cylindrique / Goupilles coniques

Métrique



Metric DOWEL PINS – Steel

NOT HARDENED – Not Plated

DIN 7 m6 Tolerance

This Standard has been replaced. Please see Catalog Page R21 for more information.

Nom. Dia.	1 mm	1.5 mm	2 mm	2.5 mm	3 mm	4 mm	5 mm				
Length (mm)	ORDER BY SPAENAUR NUMBERS LISTED BELOW										
6					238-200	238-211					
8	238-832			238-838	238-201	238-848	238-860				
10	238-833	238-928	238-1308	238-839	238-202	238-212	238-220				
12				238-840	238-203	238-849	238-861				
14				238-1304	238-204	238-213	238-221				
16	238-834		238-1309	238-841	238-205	238-850	238-222				
18					238-843	238-214	238-862				
20			238-836	238-842	238-206	238-215	238-223				
24					238-207	238-851	238-224				
25			238-837								
26						238-852					
28					238-844	238-216	238-863				
30					238-208	238-217	238-225				
32					238-845	238-218	238-864				
36					238-209	238-853	238-226				
40					238-846	238-219	238-227				
45						238-854	238-228				
50	See page E87 for additional materials.						238-855	238-229			
60										238-856	238-865
70											238-866
PKG QTY. 100											

Continued on next page...

<p>Metric</p> <p>Full length Taper Grooved Pins</p> <p>DIN 1471</p> <p><small>This Standard has been replaced. Please see Catalog Page R21 for more information.</small></p> <p>Plain Steel</p> <p>PKG QTY. 100</p> <p>238-1302YZ 4 mm x 32 mm Yellow Zinc Plated</p>	<p>Metric</p> <p>Half length Taper Grooved Pins</p> <p>DIN 1472</p> <p><small>This Standard has been replaced. Please see Catalog Page R21 for more information.</small></p> <p>Plain Steel</p> <p>PKG QTY. 100 (EXCEPT 8 mm - PKG QTY. 50)</p> <p>238-1315 3 mm x 20 mm 238-1316 4 mm x 25 mm 238-1312 5 mm x 35 mm 238-1336 8 mm x 50 mm</p>	<p>Metric</p> <p>Full length Grooved Pins</p> <p>DIN 1473</p> <p><small>This Standard has been replaced. Please see Catalog Page R21 for more information.</small></p> <p>Plain Steel</p> <p>PKG QTY. 50</p> <p>238-1311 8 mm x 50 mm</p>
---	---	---

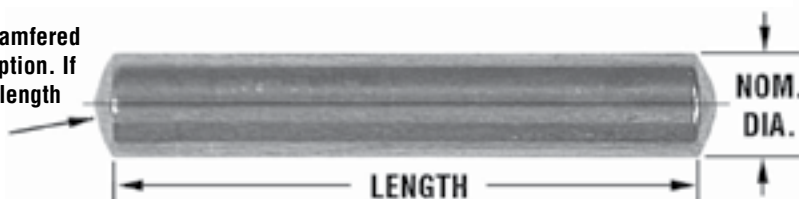
Metric

Dowel Pins

Métrique

Goupilles cylindrique

Round or chamfered ends - our option. If chamfered, length is overall.



ISO 2338



Dimensions shown are subject to normal commercial tolerances.

Nom. Dia.	6 mm	8 mm	10 mm	12 mm	16 mm	20 mm
Length (mm)	ORDER BY SPAENAUR NUMBERS LISTED BELOW					
8	... Continued from previous page					
10	238-230	238-243				
12	238-231	238-873				
14	238-232	238-244				
16	238-233	238-874	238-882			
18	238-234	238-245	238-883			
20	238-235	238-246	238-255	238-260		
24	238-236	238-875	238-884			
28	238-237	238-247	238-885	238-896		
30	238-238	238-248	238-256	238-261		
32	238-239	238-876	238-886	238-897	238-906	
36	238-868	238-249	238-887	238-898	238-907	
40	238-240	238-250	238-257	238-262	238-908	
45	238-241	238-251	238-888	238-899	238-909	238-919
50	238-869	238-252	238-889	238-900	238-910	238-920
55	238-C37-1P					
60	238-242	238-877	238-258	238-263	238-911	238-921
70	238-872	238-253	238-890	238-C36-1A	238-912	238-922
80		238-878	238-891	238-902	238-913	238-923
90		238-879	238-892	238-903	238-914	238-924
100		238-254	238-259	238-264	238-915	238-925
120		238-880	238-893	238-904	238-916	238-926
140						238-927

Contact Sales Desk For Package Quantities

ADDITIONAL MATERIALS AVAILABLE IN ISO 2338

A1 (303) STAINLESS STEEL h8 tolerance	
238-800 3 x 8 mm PKG QTY. 100	
A1 (4305) STAINLESS STEEL m6 tolerance	
238-D01-1K 2.5 x 16 mm PKG QTY. 100	
A2 (18-8) STAINLESS STEEL	
238-831 6 x 24 mm PKG QTY. 100	238-D04-1X 8 x 30 mm PKG QTY. 100

Metric

Dowel Pull Pins

Métrique

Goupilles de traction

Metric DOWEL PULL PINS

ISO 8735

This Standard has been replaced. Please see Catalog Page R21 for more information.

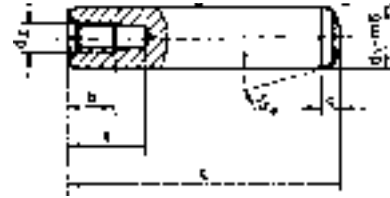
with internal thread

Flattened (or with longitudinal groove)

STEEL, Not Plated

Hardened to HRC 60 ± 2

Metric Regular (COARSE) Thread



Precision Ground to m6 tol.

d1 m6	6 mm	8 mm	10 mm	12 mm	16 mm	20 mm
~c	2.1 mm	2.6 mm	3 mm	3.8 mm	4.6 mm	6 mm
*d2	M4	M5	M6	M6	M8	M10
b	6 mm	8 mm	10 mm	12 mm	16 mm	18 mm
t min.	10 mm	12 mm	16 mm	20 mm	25 mm	28 mm
Length (L)	ORDER BY SPAENAUR NUMBERS LISTED BELOW					
12 mm	238-1175					
16	238-1176					
20	238-1177	238-1186				
24	238-1178	238-1187	238-1197			
28	238-1179	238-1188	238-1198	238-1208		
30		238-1189				
32	238-1180	238-1190	238-1199	238-1209		
36	238-1181	238-1191	238-1200	238-1210		
40	238-1182	238-1192	238-1201	238-1211	238-1219	
45	238-1183	238-1306	238-1202	238-C23-1X		
50	238-1184	238-1193	238-1203	238-1213	238-1220	238-1226
60	238-1185	238-1194	238-1204	238-C49-1P	238-1221	238-1227
70		238-1195	238-1205	238-1215	238-1222	238-1228
80		238-1196	238-1206	238-1216	238-1223	238-1229
90			238-1305			
100			238-1207	238-1217	238-1224	238-1230
120				238-1218	238-1225	238-1231
	PKG QTY. 25				PKG QTY. 10	

See pages E84-E87 for Metric Dowel Pins.

See our line of Metric Reamers on Pages P45-P49