

Projection Weld Pins

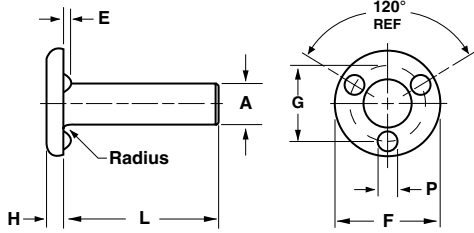
Axes à souder par bossage

STANLEY
Engineered Fastening

GRIPCO

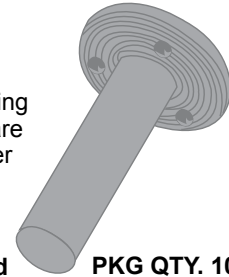
Inch
Pouce

B



**PROJECTION WELD PINS
"MP" SERIES**

The MP Series, Projection Weld Pins are manufactured from low carbon, high welding quality steel. These projection weld pins are designed with three weld projections under the head. This feature allows for flush mounting and centering for through-hole applications.

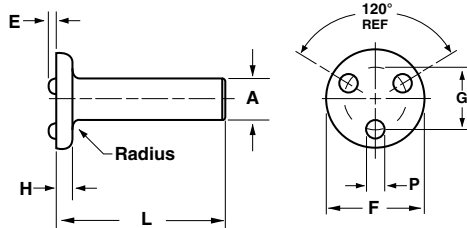


Not Plated PKG QTY. 100

Pin (A) Body Dia.	.117"	.144"	.163"	.190"	.218"	.250"	.277"	.335"	.375"
Head Diameter (F)	.312"	.375"	.437"	.500"	.562"	.625"	.750"	.875"	.875"
Head Thickness (H)	.047"	.062"	.062"	.078"	.078"	.078"	.094"	.109"	.109"
Proj. Height (E)	.020"	.024"	.028"	.033"	.038"	.038"	.043"	.048"	.048"
Proj. Width (P)	.058"	.072"	.086"	.090"	.104"	.104"	.119"	.133"	.133"
Locating Circle (G)	.225"	.266"	.312"	.359"	.406"	.437"	.531"	.625"	.625"

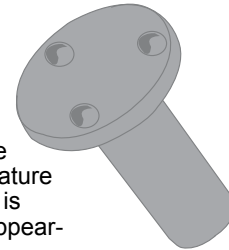
ORDER BY SPAENAUR NUMBERS LISTED BELOW

Length Under Head (L)	5/16"	573-064 ("PH" SERIES Not Gripco)				573-049 ("PH" SERIES Not Gripco)			
	3/8"					573-038			



**PROJECTION WELD PINS
"NP" SERIES**

The NP Series, Projection Weld Pins are manufactured from low carbon, high welding quality steel. These projection weld pins are designed with three weld projections on top of the head. This feature eliminates the need for prepared holes and is ideal in those applications where product appearance is a prime consideration.



Can be manufactured to meet specific requirements in production run. Prices are available upon request.

PKG QTY. 100 Not Plated

Pin (A) Body Dia.	.117"	.144"	.163"	.190"	.218"	.250"	.277"	.335"	.375"
Head Diameter (F)	.250"	.312"	.375"	.437"	.500"	.500"	.625"	.750"	.750"
Head Thickness (H)	.031"	.047"	.062"	.062"	.078"	.078"	.094"	.109"	.109"
Proj. Height (E)	.020"	.024"	.024"	.033"	.038"	.038"	.043"	.048"	.048"
Proj. Width (P)	.058"	.060"	.082"	.090"	.104"	.104"	.119"	.133"	.133"
Locating Circle (G)	.152"	.203"	.234"	.277"	.312"	.312"	.391"	.484"	.484"

ORDER BY SPAENAUR NUMBERS LISTED BELOW

Total Length (L)	1/2"					573-037			
---------------------	------	--	--	--	--	----------------	--	--	--

CATALOG 14

SPAENAUR

B132

© 2018 Spenaaur Inc. All rights reserved. Catalog may not be reproduced, in whole or in part, without the written permission of Spenaaur Inc. Subject to Catalog Terms and Conditions of Use available at Spenaaur.com and on page TC2 and TC3 at the back of this catalog.
© 2018 Spenaaur Inc. Tous droits réservés. Le catalogue ne peut être reproduit, en tout ou en partie, sans l'autorisation écrite de Spenaaur Inc. L'utilisation est soumise aux Conditions d'utilisation du Catalogue disponibles sur Spenaaur.com et à la page TC4 et TC5 à la fin de ce catalogue.

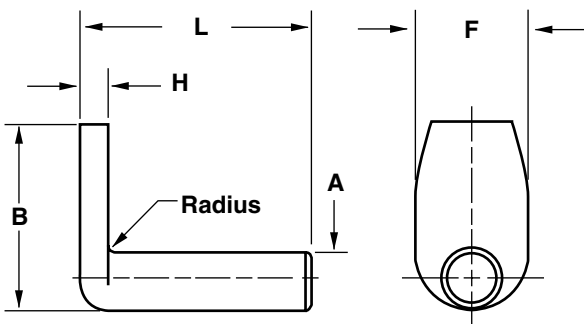
Inch
Pouce

STANLEY
Engineered Fastening

GRIPCO

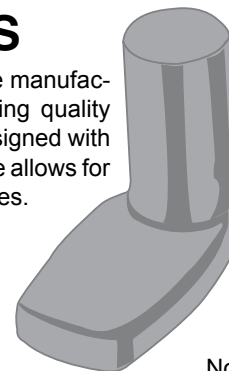
Spot Weld Pins

Axes à souder par points



SPOT WELD PINS
“LU” SERIES

The LU Series, Spot Weld Pins are manufactured from low carbon, high welding quality steel. These spot weld pins are designed with a 90° plain spade head. This feature allows for welding to go through metal surfaces.



B

PKG QTY. 100

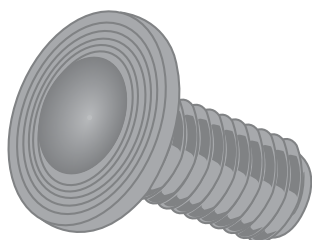
Not
Plated

Pin (A) Body Dia.	.117"	.144"	.163"	.190"	.218"	.250"	.277"	.335"	.375"
Head Width (F)	.219"	.250"	.312"	.406"	.375"	.375"	.437"	.531"	.562"
Head Thickness (H)	.047"	.062"	.062"	.062"	.094"	.125"	.125"	.156"	.187"
Head Length Overall (B)	.562"	.625"	.687"	.687"	.750"	.750"	.875"	.750"	1.000"
Overall Length (L)	ORDER BY SPAENAUR NUMBERS LISTED BELOW								
1/2"	573-122								
5/8"		573-123		573-124					

Fasteners shown below are special and are subject to minimum production runs.

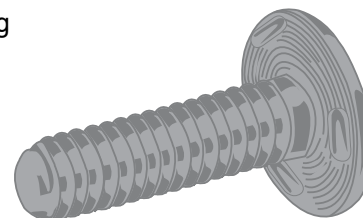
Contact Sales Desk For Package Quantities

See Section C of our catalog
for Weld Nuts.



PROJECTION WELD SCREWS
“NA” SERIES

These projection weld screws are designed with a single button projection on the top of the head. This feature permits welding to tubing and curved surfaces.



PROJECTION WELD SCREWS
“AA” SERIES

These projection weld screws are designed with three sausage-shaped weld projections under the head. This feature provides greater weld area.

For Vise-Grip® Welding Clamps see Page P94

CATALOG 14

SPAENAUR