

Spring Pins

Goupilles à ressort



Inch  
Pouce



Corrosion Resistant

Slotted Spring Tension Pins

Stainless Steel AISI 420 pins are excellent for applications up to **370°C** (700°F), but should not be subjected to higher temperatures. They can be used in temperatures down to **-45°C** (-50°F).

Reusable - Shock resistant - Vibration-proof Pins are **oversize**; will contract to "nominal diameter" upon insertion.

To ASME B18.8.2 Specs.

(Rolled Spring Pins)

Nominal Diameter	1/16"	5/64"	3/32"	1/8"	5/32"	3/16"	7/32"	1/4"	5/16"	3/8"	1/2"
Wall Thickness	.012	.018	.022	.028	.032	.040	.048	.048	.062	.077	.094
Outside dia. before insertion	.066-.069	.083-.086	.099-.103	.131-.135	.162-.167	.194-.199	.226-.232	.258-.264	.321-.330	.385-.395	.513-.524
Recommended Hole Size	.062-.065	.078-.081	.094-.097	.125-.129	.156-.160	.187-.192	.219-.224	.250-.256	.312-.318	.375-.382	.500-.510
Min. Double Shear Strength in lbs.	430	800	1,150	1,875	2,750	4,150	5,850	7,050	10,800	16,300	27,100

LENGTHS

ORDER BY SPAENAUR NUMBERS LISTED BELOW

1/4"	240-071										
5/16"	240-102		240-115								
3/8"	240-067		240-055	240-023							
7/16"					240-006						
1/2"	TP-2000	240-019	240-K03-1W	240-024	240-028	240-029					
9/16"			240-073								
11/16"				240-070							
5/8"	240-018	240-020	240-075	240-008		240-030	240-061	240-035			
3/4"	TP-2003	TP-2005	240-057	240-025	TP-2004	240-009	240-062	240-036	240-044		
7/8"				240-007		240-031	240-063	240-037			
1"	240-114	240-021	240-058	TP-2002	240-K02-1K	TP-2001	240-064	240-012	240-045	240-038	
1-3/16"			240-074								
1-1/4"			240-059	240-026	240-101	240-032	240-065	240-039	240-046	TP-2006	
1-3/8"								240-072			
1-1/2"		240-022	240-060	240-027		240-033	240-066	240-040	240-047	240-011	240-052
1-5/8"				240-103							
2"				240-013	240-014	240-034					
2-1/4"								240-K01-1T	240-048	240-050	240-053
								240-042			
2-1/2"								240-043	240-049	240-051	
3"								240-015	240-016	240-017	240-054
3-1/2"								240-010			
4-1/2"								240-113			

Contact Sales Desk For Package Quantities

302 STAINLESS STEEL — Slotted Spring Tension Pins, May be slightly Magnetic

Nominal Diameter	3/32"	1/8"	3/16"	1/4"
Wall Thickness	.022	.028	.040	.048
Outside dia. before insertion	.099-.103	.131-.135	.194-.199	.258-.264
Recommended Hole Size	.094-.097	.125-.129	.187-.192	.250-.256
Min. Double Shear Strength in lbs.	670	1,090	2,425	4,100
LENGTHS	ORDER BY SPAENAUR NUMBERS LISTED BELOW			
5/16"		240-104		
1/2"			240-110	240-108
5/8"		240-100		
3/4"	240-002	240-003		240-106
1-1/8"		240-107		
1-1/4"			240-K04-1M	
1-5/8"				240-111
1-3/4"				240-112
2"				240-105

PKG QTY. 100

E

CATALOG 14

SPAENAUR

Inch  
Pouce

**SPIROL**

**Spring Pins**  
Goupilles à ressort



## High Carbon Spring Steel (Plain Finish) Slotted Spring Tension Pins

These pins replace more expensive fasteners such as dowel, straight solid, taper, and groove pins.

**Re-usable - Shock resistant - Vibration-proof**

Pins are oversize. Will contract to "nominal diameter" upon insertion.

Tension pins are used throughout the appliance, railroad, automotive, construction, farm, electronic, and general equipment industries to simplify design and reduce assembly costs.

To ASME/ANSI B18.8.2 Specs.

Nominal Diameter	1/16"	5/64"	3/32"	1/8"	5/32"	3/16"	7/32"	1/4"	5/16"	3/8"	7/16"	1/2"
Outside Diameter Before Insertion	.066-.069	.083-.086	.099-.103	.131-.135	.162-.167	.194-.199	.226-.232	.258-.264	.321-.330	.385-.395	.448-.459	.513-.524
Wall Thickness	.012	.018	.022	.028	.032	.040	.048	.048	.062	.077	.077	.094
Recommended Hole Size	.062-.065	.078-.081	.094-.097	.125-.129	.156-.160	.187-.192	.219-.224	.250-.256	.312-.318	.375-.382	.437-.445	.500-.510
Min. Double Shear Strength in lbs.	430	800	1,150	1,875	2,750	4,150	5,850	7,050	10,800	16,300	19,800	27,100
<b>LENGTH</b>	<b>ORDER BY SPAENAUR NUMBERS LISTED BELOW</b>											
3/16"	TP-45											
1/4"	TP-46	TP-55	TP-84	239-008								
5/16"	239-D03-1W	TP-56	TP-85	239-011								
3/8"	TP-48	239-D02-1X	TP-81	TP-73	239-D18-1A							
7/16"	TP-49	239-D22-1Y	TP-86	TP-93								
1/2"	TP-50	TP-59	TP-1	TP-8	TP-77	TP-113						
9/16"	TP-51	TP-60	TP-87	TP-94	239-D23-1C	TP-114						
5/8"	TP-52	TP-61	TP-2	TP-9	TP-105	TP-72		TP-82		239-009		
11/16"	TP-53	TP-62	TP-88	TP-95	TP-106	TP-115						
3/4"	239-D08-1Y	TP-63	TP-3	TP-10	TP-15	TP-20	TP-121	TP-134	TP-83	TP-150		
13/16"		TP-64	TP-89	TP-96	TP-107	TP-116						
7/8"		TP-65	TP-4	TP-11	TP-16	TP-21	TP-122	TP-135				
15/16"	239-173	TP-66	TP-90	TP-97	TP-108	TP-117						
1"		TP-67	TP-5	TP-12	TP-17	TP-22	TP-123	TP-27	TP-32	TP-151		
1-1/8"			TP-91	TP-98	TP-109	TP-118	TP-124	239-D01-1T				
1-1/4"		TP-69	TP-6	TP-13	TP-18	TP-23	TP-125	TP-28	TP-33	TP-152		TP-158
1-3/8"		TP-70	TP-92	TP-99	TP-110	TP-75	TP-126	TP-74				
1-1/2"			TP-7	TP-14	TP-19	TP-24	TP-127	TP-29	TP-34	TP-39	239-001	TP-159
1-5/8"				TP-100	TP-111	TP-119	TP-128	TP-137				
1-3/4"				TP-101	TP-112	TP-25	TP-129	TP-30	TP-35	TP-40		
1-7/8"				TP-102		TP-120	TP-130	TP-138				
2"				TP-103	239-004	TP-26	TP-131	TP-31	TP-36	TP-41		TP-160
2-1/4"					239-002	TP-76	TP-132	TP-139	TP-37	TP-42		TP-161
2-1/2"					239-010	TP-167	TP-133	TP-79	TP-38	TP-43		TP-78
2-3/4"								TP-140	TP-144	TP-153		TP-162
3"						239-007	239-003	239-D07-1P	TP-145	TP-80		TP-163
3-1/4"								TP-142	TP-146	TP-154		TP-164
3-1/2"								TP-143	TP-147	TP-155		TP-165
3-3/4"									TP-148	TP-156		TP-166
4"									TP-149	TP-157		*TP-44
4-1/2"												*TP-170
5"												*239-D16-1M

**Double up for...HEAVY DUTY applications.**

Use one Spring Tension Pin inside another for additional strength. Install the smaller pin inside the larger pin, then insert into the application.

PIN	DIAMETERS						
INSIDE	3/32	1/8	5/32	3/16	7/32	5/16	
OUTSIDE	5/32	7/32	1/4	5/16	3/8	1/2	

\* PKG QTY. 10

### TENSION PINS (Slotted Spring Pins)



Page  
**A93**

**ASSORTMENT A-211**

**STEEL Plain Finish  
24 SIZES - 335 PIECES**

**PLASTIKIT A-61**

**STEEL Plain Finish  
24 SIZES - 123 PIECES**

CATALOG 14  
SPAENAUR

Spring Pins

Goupilles à ressort



Inch  
Pouce



High Carbon Spring Steel  
(Zinc Plated)  
Slotted Spring Tension Pins

These pins replace more expensive fasteners such as dowel, straight solid, taper, and groove pins.

Re-usable - Shock resistant - Vibration-proof

Pins are oversize. Will contract to "nominal diameter" upon insertion. Tension pins are used throughout the appliance, railroad, automotive, construction, farm, electronic, and general equipment industries to simplify design and reduce assembly costs.

To ASME/ANSI B18.8.2 Specs.

Nominal Diameter	1/16"	5/64"	3/32"	1/8"	5/32"	3/16"	7/32"	1/4"	5/16"	3/8"	7/16"	1/2"																								
Outside Diameter Before Insertion	.066-.069	.083-.086	.099-.103	.131-.135	.162-.167	.194-.199	.226-.232	.258-.264	.321-.330	.385-.395	.448-.459	.513-.524																								
Wall Thickness	.012	.018	.022	.028	.032	.040	.048	.048	.062	.077	.077	.094																								
Recommended Hole Size	.062-.065	.078-.081	.094-.097	.125-.129	.156-.160	.187-.192	.219-.224	.250-.256	.312-.318	.375-.382	.437-.445	.500-.510																								
Min. Double Shear Strength in lbs.	430	800	1,150	1,875	2,750	4,150	5,850	7,050	10,800	16,300	19,800	27,100																								
<b>LENGTH</b>	<b>ORDER BY SPAENAUR NUMBERS LISTED BELOW</b>																																			
3/16"	TP-45ZP																																			
1/4"	239-D05-1X	TP-55ZP	239-D21-1P	239-008ZP																																
5/16"	TP-47ZP		TP-85ZP																																	
3/8"	TP-48ZP	TP-57ZP	TP-81ZP	TP-73ZP																																
7/16"	TP-49ZP		TP-86ZP	TP-93ZP																																
1/2"	TP-50ZP	TP-59ZP	TP-1ZP	TP-8ZP	TP-77ZP	TP-113ZP																														
9/16"	TP-51ZP	TP-60ZP	TP-87ZP	TP-94ZP	TP-104ZP																															
5/8"	TP-52ZP	TP-61ZP	TP-2ZP	TP-9ZP	TP-105ZP	TP-72ZP			TP-82ZP																											
11/16"	TP-53ZP		TP-88ZP	TP-95ZP		TP-115ZP																														
3/4"	TP-54ZP	TP-63ZP	TP-3ZP	TP-10ZP	239-D06-1A	TP-20ZP	TP-121ZP	TP-134ZP	TP-83ZP																											
13/16"				TP-96ZP		TP-116ZP																														
7/8"			TP-4ZP	TP-11ZP	TP-16ZP	TP-21ZP	TP-122ZP	TP-135ZP																												
15/16"		TP-66ZP		TP-97ZP	TP-108ZP																															
1"		TP-67ZP	TP-5ZP	TP-12ZP	TP-17ZP	TP-22ZP	TP-123ZP	TP-27ZP	TP-32ZP	TP-151ZP																										
1-1/8"				TP-98ZP	TP-109ZP	TP-118ZP	TP-124ZP	TP-136ZP																												
1-1/4"		TP-69ZP	TP-6ZP	TP-13ZP	TP-18ZP	TP-23ZP	TP-125ZP	TP-28ZP	TP-33ZP	TP-152ZP		TP-158ZP																								
1-3/8"			TP-92ZP	TP-99ZP	TP-110ZP	TP-75ZP	TP-126ZP	TP-74ZP																												
1-1/2"		TP-71ZP	TP-7ZP	TP-14ZP	TP-19ZP	TP-24ZP	TP-127ZP	TP-29ZP	TP-34ZP	TP-39ZP	239-001ZP	TP-159ZP																								
1-5/8"				TP-100ZP	TP-111ZP	TP-119ZP	TP-128ZP	TP-137ZP																												
1-3/4"				TP-101ZP	TP-112ZP	TP-25ZP	TP-129ZP	TP-30ZP	TP-35ZP	TP-40ZP																										
1-7/8"				TP-102ZP		TP-120ZP	TP-130ZP	TP-138ZP																												
2"				TP-103ZP	239-004ZP	TP-26ZP	TP-131ZP	TP-31ZP	TP-36ZP	TP-41ZP		TP-160ZP																								
2-1/4"					239-002ZP	TP-76ZP	TP-132ZP	TP-139ZP	TP-37ZP	TP-42ZP		TP-161ZP																								
2-1/2"						TP-167ZP	TP-133ZP	TP-79ZP	TP-38ZP	TP-43ZP		TP-78ZP																								
2-3/4"								TP-140ZP	TP-144ZP			TP-162ZP																								
3"								TP-141ZP	TP-145ZP	TP-80ZP		TP-163ZP																								
3-1/4"									TP-146ZP	TP-154ZP		TP-164ZP																								
3-1/2"									TP-147ZP			TP-165ZP																								
3-3/4"									TP-148ZP																											
4"									TP-149ZP																											
	<p><b>Double up for...HEAVY DUTY applications.</b></p> <p>Use one Spring Tension Pin inside another for additional strength. Install the smaller pin inside the larger pin, then insert into the application.</p> <table border="1"> <thead> <tr> <th>PIN</th> <th colspan="7">DIAMETERS</th> </tr> </thead> <tbody> <tr> <td>INSIDE</td> <td>3/32</td> <td>1/8</td> <td>5/32</td> <td>3/16</td> <td>7/32</td> <td>5/16</td> <td></td> </tr> <tr> <td>OUTSIDE</td> <td>5/32</td> <td>7/32</td> <td>1/4</td> <td>5/16</td> <td>3/8</td> <td>1/2</td> <td></td> </tr> </tbody> </table>												PIN	DIAMETERS							INSIDE	3/32	1/8	5/32	3/16	7/32	5/16		OUTSIDE	5/32	7/32	1/4	5/16	3/8	1/2	
PIN	DIAMETERS																																			
INSIDE	3/32	1/8	5/32	3/16	7/32	5/16																														
OUTSIDE	5/32	7/32	1/4	5/16	3/8	1/2																														

E

SPAENAUR CATALOG 14

Metric

Métrique

Spring Pins

Gouilles à ressort

~ ISO 8752



# HEAVY DUTY SPRING TENSION PINS

Spring Steel – Plain Finish

**SLOTTED - Reusable, Shock-resistant, Vibration-proof**

Pins are oversize. Will contract to "Nominal Diameter" upon insertion.

**Note:** Diameters **M1** to **M4.5** are chamfered on **both** ends.  
Larger diameters may be chamfered on **one** end only.

Nom. Dia.	1 mm	1.5 mm	2 mm	2.5 mm	3 mm	3.5 mm	4 mm	4.5 mm	5 mm	6 mm
MIN. O.D. BEFORE INSERTION (mm)	1.2	1.7	2.3	2.8	3.3	3.8	4.4	4.9	5.4	6.4
RECOMMENDED (Max.) HOLE SIZE	1.1	1.6	2.1	2.6	3.1	3.65	4.15	4.65	5.15	6.15
Wall Thick.	0.2	0.3	0.4	0.5	0.6	0.75	0.8	1.0	1.0	1.25
Length (mm)	<b>ORDER BY SPAENAUR NUMBERS LISTED BELOW</b>									
4	238-500	238-510	238-210	238-094	238-096	238-1149	238-1152 (Black)			
5	238-501	238-511	238-520	238-095	238-097	238-1150	238-1153 (Black)	238-1156 (Black)		
6	238-502	238-512	238-521	238-534	238-098	238-1151	238-1154	238-1157 (Black)		
8	238-503	238-513	238-522	238-535	238-550	238-565	238-1155	238-1158		
10	238-504	238-514	238-523	238-536	238-551	238-566	▲238-584	238-602	238-620	238-1163
12	238-505	238-515	238-524	238-537	238-552	238-567	238-585	238-603	238-621	238-638
14	238-506	238-516	238-525	238-538	238-553	238-568	238-586	238-604	238-622	238-639
16	238-507	238-517	238-526	238-539	238-554	238-569	238-587	238-605	238-623	238-640
18	238-508	238-518	238-527	238-540	238-555	238-570	238-588	238-606	238-624	238-641
20	238-509	238-519	238-528	238-541	238-556	238-571	238-589	238-607	238-625	238-642
22			238-529	238-542	238-557	238-572	238-D10-1C	238-608	238-626	238-643
24			238-530	238-543	238-558	238-573	238-591	238-609	238-627	238-644
26			238-531	238-544	238-C33-1W	238-574	238-592	238-610	238-628	238-645
28			238-532	238-545	238-560	238-575	238-593	238-611	238-629	238-1164
30			238-533	238-D09-1N	238-D02-1W	238-576	238-594	238-612	238-630	238-646
32					238-562	238-577	238-595	238-613	238-631	238-1165
36					238-563	238-578	238-596	238-614	238-632	238-647
40				238-549	238-564	238-579	238-597	238-615	238-633	238-648
45					238-078	238-580	238-598	238-616	238-634	238-649
50							238-599	238-617	238-635	238-650
55							238-600	238-618	238-636	238-651
60						238-583	238-601	238-619	238-637	238-652
65									238-1159	238-653
70									238-1160	238-654
75									238-1161	238-655
80									238-1162	238-1166
85										238-1167
90										238-1168
95										238-1169
100										238-754
	PKG QTY. 100									PKG QTY. 50

▲ 239-749 DIN 7346 Light Duty.

Continued on next page...

**PLASTIKIT**  
«PLASTIKIT» **804-002**

**METRIC**  
**TENSION PINS**

(Slotted Spring Pins)  
Spring Steel - Plain Finish  
**24 SIZES - 180 PIECES**

Clear plastic box with hinged lid.  
Size: 1" x 2-3/4" x 4-1/2"



**For the complete assortment contents turn to A93**

# Metric HEAVY DUTY SPRING TENSION PINS

## Spring Steel – Plain Finish

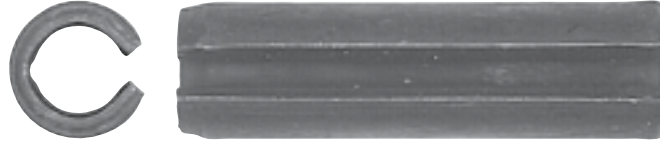
**ISO 8752**

**SLOTTED - Reusable, Shock-resistant, Vibration-proof**

Pins are oversize. Will contract to "Nominal Diameter" upon insertion.

**Note:** Diameters **M1** to **M4.5** are chamfered on **both** ends.

Larger diameters may be chamfered on **one** end only.



...Continued from previous page

Nom. Dia.	8 mm	10 mm	12 mm	13 mm	14 mm	16 mm	18 mm	20 mm	25 mm
MIN. O.D. BEFORE INSERTION (mm)	8.5	10.5	12.5	13.5	14.5	16.5	18.5	20.5	25.5
RECOMMENDED (Max.) HOLE SIZE	8.25	10.25	12.3	13.3	14.3	16.3	18.3	20.3	25.3
Wall Thick.	1.5	2.0	2.5	2.5	3.0	3.0	3.5	4.0	5.0
Length (mm)	<b>ORDER BY SPAENAUR NUMBERS LISTED BELOW</b>								
10	238-1171	238-1235							
12	238-1172	238-1236							
14	238-656	238-1237							
16	238-657	238-673	238-1248						
18	238-658	238-674	238-691						
20	238-659	238-675	238-692	238-709		238-1261			
22	238-660	238-676	238-693	238-710	238-726	*238-1262			
24	238-661	238-677	238-694	238-711		238-736			
26	238-662	238-678	238-695	238-712	238-727	238-1263			
28	238-1173	238-1238	238-1249			*238-1264			
30	238-663	238-679	238-696	238-713	238-728	238-737		238-1275	
32	238-399	238-1239	238-1250			238-1265			
36	238-664	238-680	238-697	238-714	238-1259	238-1266			
40	238-665	238-681	238-698	238-715	238-729	238-738		238-C21-1W	
45	238-666	238-682	238-699	238-716		*238-1267			
50	238-667	238-683	238-700	238-C51-1P	238-C53-1C	238-739	238-747	238-D06-1P	238-1330
55	238-668	238-684	238-701	238-D11-1N		238-1268			
60	238-669	238-685	238-702	238-719	238-731	238-740		238-1280	238-C25-1P
65	238-670	238-686	238-703	238-720					
70	238-671	238-687	238-704	238-C17-1T	238-732	238-741		238-1281	
75	238-672	238-688	238-705	238-D17-1A					
80	*238-1174	238-689	238-706	238-723	238-733	238-742	238-748	238-1282	238-1332
85		238-1240	*238-1251						
90	238-1232	238-690	238-707	238-724	238-734	238-C55-1T		238-C19-1W	
95		238-1241	*238-1252						
100	238-1233	238-1242	238-708	238-725	238-735	238-743	238-749	238-751	238-1333
120	238-1234	238-1243	238-1254			238-C52-1Y		238-1284	
130						238-745			
140		238-1244	238-C57-1W			238-746	238-750	238-752	
150						238-1269			
160		238-1245						238-1285	
	PKG QTY. 50		PKG QTY. 25			PKG QTY. 10			

\*Black

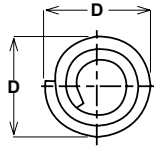
**For Rolled Spacers, Spacer Sleeves  
and Self-Clinching STANDOFFS see pages G27 to G34.**

E

Inch  
Pouce

**SPIROL**

**Spring Pins**  
Goupilles à ressort



**Coiled Spring Pins**

**CARBON STEEL (1070-1095)**  
**Standard Duty Plain Finish**  
"D" = EXPANDED DIAMETER

Nominal Diameter	1/16"	5/64"	3/32"	7/64"	1/8"	5/32"	3/16"	7/32"	1/4"
"D" Exp. Dia.	.072-.067	.088-.083	.105-.099	.120-.114	.138-.131	.171-.163	.205-.196	.238-.228	.271-.260
Hole Size	.065-.061	.081-.077	.097-.093	.112-.108	.129-.124	.160-.155	.192-.185	.224-.217	.256-.247
Mtrl. Thickness	.005	.006	.007	.008	.010	.012	.016	.018	.021
<b>L E N G T H</b>	3/16"	<b>239-202</b>	<b>239-216</b>	<b>239-232</b>					
	1/4"	<b>239-203</b>	<b>239-217</b>	<b>239-308</b>					
	5/16"	<b>239-204</b>	<b>239-218</b>	<b>239-234</b>	<b>239-252</b>	<b>239-272</b>			
	3/8"	<b>239-205</b>	<b>239-219</b>	<b>239-235</b>		<b>239-273</b>	<b>239-290</b>	<b>239-339</b>	
	7/16"	<b>239-206</b>	<b>239-220</b>	<b>239-236</b>	<b>239-254</b>	<b>239-274</b>	<b>239-291</b>		
	1/2"	<b>239-207</b>	<b>239-221</b>	<b>239-311</b>		<b>239-312</b>	<b>239-292</b>	<b>239-341</b>	<b>239-376</b>
	9/16"	<b>239-208</b>	<b>239-222</b>	<b>239-237</b>	<b>239-256</b>	<b>239-275</b>	<b>239-293</b>	<b>239-342</b>	<b>239-359</b>
	5/8"	<b>239-209</b>	<b>239-223</b>	<b>239-238</b>	<b>239-257</b>	<b>239-276</b>	<b>239-294</b>	<b>239-343</b>	<b>239-360</b>
	11/16"	<b>239-210</b>	<b>239-224</b>	<b>239-239</b>		<b>239-277</b>	<b>239-295</b>	<b>239-344</b>	<b>239-361</b>
	3/4"	<b>239-211</b>	<b>239-225</b>	<b>239-240</b>	<b>239-326</b>	<b>239-278</b>	<b>239-304</b>	<b>239-345</b>	<b>239-362</b>
	13/16"			<b>239-241</b>	<b>239-259</b>	<b>239-279</b>	<b>239-296</b>		<b>239-363</b>
	7/8"	<b>239-213</b>	<b>239-227</b>	<b>239-242</b>		<b>239-280</b>	<b>239-297</b>	<b>239-347</b>	<b>239-364</b>
	15/16"	<b>239-214</b>	<b>239-228</b>	<b>239-243</b>	<b>239-261</b>	<b>239-281</b>	<b>239-298</b>	<b>239-348</b>	<b>239-365</b>
	1"	<b>239-215</b>	<b>239-229</b>	<b>239-244</b>	<b>239-262</b>	<b>239-325</b>	<b>239-299</b>	<b>239-318</b>	<b>239-366</b>
	1-1/8"		<b>239-230</b>	<b>239-245</b>	<b>239-263</b>	<b>239-282</b>	<b>239-306</b>	<b>239-349</b>	<b>239-367</b>
	1-1/4"		<b>239-231</b>	<b>239-246</b>	<b>239-264</b>	<b>239-305</b>	<b>239-330</b>	<b>239-350</b>	<b>239-368</b>
	1-3/8"			<b>239-247</b>		<b>239-283</b>	<b>239-331</b>	<b>239-351</b>	<b>239-369</b>
	1-1/2"			<b>239-248</b>	<b>239-266</b>	<b>239-D17-1X</b>	<b>239-332</b>	<b>239-303</b>	<b>239-307</b>
	1-5/8"			<b>239-249</b>	<b>239-267</b>	<b>239-285</b>	<b>239-333</b>	<b>239-352</b>	<b>239-370</b>
	1-3/4"			<b>239-250</b>		<b>239-286</b>	<b>239-334</b>	<b>239-353</b>	<b>239-371</b>
	1-7/8"					<b>239-287</b>	<b>239-335</b>	<b>239-354</b>	<b>239-372</b>
	2"					<b>239-288</b>	<b>239-336</b>	<b>239-355</b>	<b>239-373</b>
	2-1/4"							<b>239-356</b>	<b>239-374</b>
	2-1/2"						<b>239-338</b>	<b>239-357</b>	<b>239-D04-1M</b>
2-3/4"								<b>239-399</b>	
3"								<b>239-320</b>	
3-1/4"								<b>239-400</b>	
3-1/2"								<b>239-401</b>	

PKG QTY. 100

◆ Heavy Duty

STAINLESS STEEL - 302 REGULAR DUTY			
Nominal Diameter	3/32"	1/8"	
"D" Exp. Dia.	.120-.114	.271-.260	
Hole Size	.112-.108	.256-.247	
Mtrl. Thickness	0.008	0.021	
LENGTH	1"	<b>239-244</b>	<b>240-001</b>

STAINLESS STEEL - 302 HEAVY DUTY			
"D" Exp. Dia.	.120-.114		
Hole Size	.112-.108		
Mtrl. Thickness	0.008		
LENGTH	1"	<b>240-814</b>	

PKG QTY. 100

Continued on next page...



**COILED SPRING PINS**  
Carbon Steel, Plain Finish

Inch Sizes



**ASSORTMENT**  
**ASSORTMENT 805-491**  
**24 SIZES - 350 PIECES**

Regular Size drawer has hinged lid and 24 "Scooped" bins. Drawer fits Slide Racks as shown on page A2  
Shipping weight: **2.72 kg** (6 lbs.)

**PLASTIKIT**  
«PLASTIKIT» **804-004**  
**25 SIZES - 210 PIECES**

Clear plastic box with hinged lid.  
Size: 1" x 2-3/4" x 4-1/2"



**For the complete assortment contents turn to A94**

**Spring Pins**  
Goupilles à ressort



Inch  
Pouce

# Coiled Spring Pins

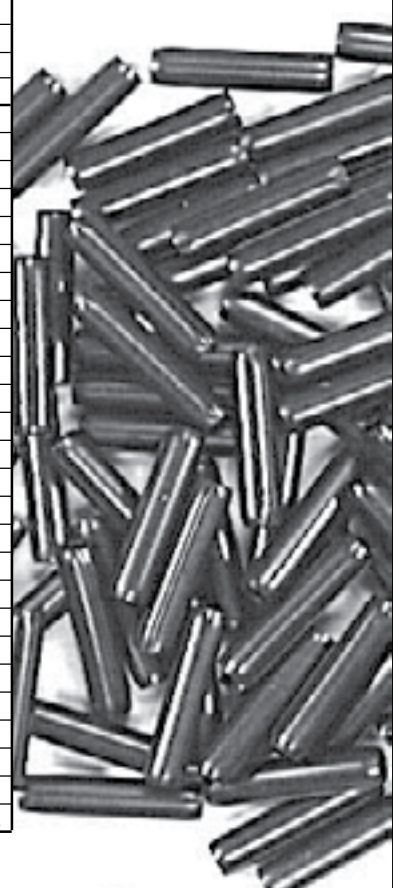
**CARBON STEEL (1070-1095)**  
**Heavy Duty Plain Finish**

...Continued from previous page

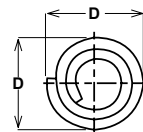
**HARDNESS SPECIFICATIONS**

Stock Thickness Range	Over	-	0.010"	0.025"	0.050"
	Thru	0.010"	0.025"	0.050"	-
Hardness Test		Tukon Knoop	Rockwell 15N	Rockwell A	Rockwell C
Material		Hardness Reading			
AISI 1070 to 1095 Steel		480 to 594	83.5 to 86.9	73.6 to 77.4	46/53

Nominal Diameter	5/16"	3/8"	7/16"	1/2"	5/8"	3/4"
"D" Exp.Dia.	.337-.324	.403-.388	.469-.452	.535-.516	.661-.642	.787-.768
Hole Size	.319-.308	.383-.370	.446-.431	.510-.493	.635-.618	.760-.743
Mtrl. Thickness	.025	.032	.038	.042	.052	.063
<b>L E N G T H</b>	5/8"	<b>239-402</b>				
	11/16"	<b>239-403</b>				
	3/4"	<b>239-322</b>				
	7/8"	<b>239-405</b>				
	15/16"	<b>239-406</b>				
	1"	<b>239-407</b>	<b>239-423</b>			
	1-1/8"	<b>239-408</b>				
	1-1/4"	<b>239-409</b>	<b>239-424</b>		<b>239-616</b>	
	1-3/8"	<b>239-410</b>				
	1-1/2"	<b>239-411</b>	<b>239-425</b>	<b>239-605</b>	<b>239-617</b>	
	1-1/2"				<b>239-310</b>	
	1-5/8"	<b>239-412</b>				
	1-3/4"	<b>239-413</b>	<b>239-315</b>	<b>239-633</b>		
	1-7/8"	<b>239-414</b>				
	2"	<b>239-300</b>	<b>239-426</b>	<b>239-607</b>	<b>239-317</b>	<b>239-309</b>
	2-1/4"	<b>239-415</b>	<b>239-427</b>		<b>239-619</b>	
	2-1/2"	<b>239-302</b>	<b>239-428</b>	<b>239-609</b>	<b>239-620</b>	<b>239-314</b>
	2-3/4"	<b>239-416</b>	<b>239-429</b>		<b>239-621</b>	
	3"	<b>239-417</b>	<b>239-313</b>	<b>239-611</b>	<b>239-622</b>	
	3-1/4"	<b>239-418</b>	<b>239-430</b>	<b>239-612</b>	<b>239-623</b>	
3-1/2"	<b>239-419</b>	<b>239-431</b>	<b>239-321</b>	<b>239-624</b>		
3-3/4"	<b>239-420</b>	<b>239-432</b>		<b>239-625</b>		
4"			<b>239-327</b>	<b>239-626</b>		
4-3/4"				<b>239-629</b>		
5"				<b>239-630</b>		
5-1/2"					<b>239-D20-1A</b>	



ALLOY STEEL HEAVY DUTY			
Nominal Diameter	7/16"	5/8"	3/4"
"D" Exp.Dia.	.469-.452	.661-.642	.787-.768
Hole Size	.446-.431	.635-.618	.760-.743
Mtrl. Thickness	0.038	0.052	0.063
Length	1-3/4"	<b>239-633</b>	
	2"		<b>239-309</b>
	2-1/2"		<b>239-314</b>
	5-1/2"		<b>239-D20-1A</b>



"D" = EXPANDED DIAMETER



Contact Sales Desk For Package Quantities

CARBON STEEL HEAVY DUTY							
Nominal Diameter	5/64"	3/32"	7/64"	3/16"	1/4"	5/16"	1/2"
"D" Exp.Dia.	.088-.083	.105-.099	.120-.114	.205-.196	.271-.260	.337-.324	.535-.516
Hole Size	.081-.077	.097-.093	.112-.108	.192-.185	.256-.247	.319-.308	.510-.493
Mtrl. Thickness	0.006	0.007	0.008	0.016	0.021	0.025	0.042
Length	3/16"	<b>239-232</b>					
	1/4"	<b>239-217</b>					
	3/8"			<b>239-339</b>			
	9/16"				<b>239-377</b>		
	5/8"					<b>239-402</b>	
	1"			<b>239-262</b>			
	1-1/2"						<b>239-310</b>
2-1/2"						<b>239-620</b>	

Inch  
Pouce

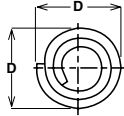


Spring Pins  
Goupilles à ressort

# Coiled Spring Pins

CARBON STEEL (1070-1095)

Standard Duty Zinc Plated



"D" = EXPANDED DIAMETER

## HARDNESS SPECIFICATIONS

Stock Thickness Range	Over	-	0.010"	0.025"	0.050"
	Thru	0.010"	0.025"	0.050"	-
Hardness Test		Tukon Knoop	Rockwell 15N	Rockwell A	Rockwell C
Material		Hardness Reading			
AISI 1070 to 1095 Steel		480 to 594	83.5 to 86.9	73.6 to 77.4	46 to 53

Nominal Diameter	1/16"	5/64"	3/32"	1/8"	5/32"	3/16"	1/4"	5/16"	
"D" Exp. Dia.	.072-.067	.088-.083	.105-.099	.138-.131	.171-.163	.205-.196	.271-.260	.337-.324	
Hole Size	.065-.061	.081-.077	.097-.093	.129-.124	.160-.155	.192-.185	.256-.247	.319-.308	
Mtrl. Thickness	.005	.006	.007	.010	.012	.016	.021	.025	
L E N G T H	1/4"	239-203ZP	239-308ZP						
	5/16"	239-204ZP		239-272ZP					
	3/8"	239-205ZP	239-219ZP	239-235ZP	239-273ZP				
	7/16"	239-206ZP	239-220ZP						
	1/2"	239-207ZP	239-221ZP	239-311ZP	239-312ZP	239-341ZP			
	9/16"	239-208ZP		239-275ZP	239-342ZP				
	5/8"		239-238ZP				239-378ZP		
	11/16"			239-277ZP					
	3/4"	239-211ZP	239-225ZP	239-240ZP	239-278ZP	239-304ZP	239-345ZP	239-388ZP	239-322ZP
	7/8"			239-242ZP	239-280ZP				
	15/16"				239-298ZP				
	1"	239-215ZP			239-325ZP	239-299ZP	239-318ZP	239-319ZP	
	1-1/8"				239-282ZP	239-306ZP	239-D19-1P		
	1-1/4"		239-231ZP		239-305ZP	239-330ZP	239-350ZP	239-393ZP	
	1-3/8"								239-410ZP
	1-1/2"				239-284ZP		239-303ZP	239-394ZP	
	1-3/4"						239-353ZP	239-395ZP	
	2"				239-288ZP		239-355ZP	239-316ZP	239-300ZP
	2-1/4"								239-415ZP
	2-1/2"						239-357ZP	239-398ZP	239-302ZP
3"							239-320ZP	239-417ZP	
								PKG QTY. 50	
								PKG QTY. 100	

For our Spirol® Coiled Spring Pins see pages E103-E107

For our Slotted Spring Pins See pages E97-E102



Spring Pins  
Goupilles à ressort

**SPIROL**

Metric  
Métrique



## Coiled Spring Pins

**~ ISO 8750**

**CARBON STEEL (1070-1095)**  
Standard Duty Plain Finish

Coiled means "Flexibility after insertion"; "uniform flexing in any direction"; "wider hole tolerances"; "rounder diameter" (best for axle & hinge applications; etc.)



Rockwell "c" 46-53 (or equivalent)

"D" = EXPANDED DIAMETER

Widely preferred by design engineers.

Nominal Diameter	0.8 mm	1 mm	1.2 mm*	1.5 mm	2 mm	2.5 mm*	3 mm	4 mm	5 mm	
"D" Exp. Dia.	0.91-0.85	1.15-1.05	1.35-1.25	1.73-1.62	2.25-2.13	2.78-2.65	3.30-3.15	4.40-4.20	5.50-5.25	
Hole Size	.083-0.80	1.03-1.00	1.23-1.20	1.57-1.50	2.07-1.97	2.58-2.47	3.10-2.97	4.10-3.97	5.12-4.95	
Mtrl. Thickness	0.07	0.08	0.10	0.13	0.17	0.21	0.25	0.33	0.42	
L E N G T H	4 mm	240-750	▲240-758	240-766		239-763				
	5	240-751		240-767		239-764				
	6	240-752	240-760	240-768	239-752	239-765	239-781			
	8	240-753	240-761	240-769	239-753	239-766	239-782	239-798	239-814	
	10	240-754	240-762	240-770	239-754	239-767	239-783	239-799	239-815	
	12	240-755	240-763		239-755	239-768	239-784	239-800	239-816	
	14	240-756	240-764	240-772	239-756	239-769	239-785	239-801	239-817	
	16		240-765		239-757	239-770	239-786	239-802	239-818	
	18				239-758	239-771	239-787	239-803	239-819	
	20	Above Nominal Diameters				239-772	239-788	239-804	239-820	239-837
	22	0.8, 1. and 1.2 mm			239-760	239-773	239-789	239-805	239-821	239-838
	24	are furnished only			239-761	239-774	239-790	239-806	239-822	239-839
	26	in Type 420, Corrosion			239-762	239-775	239-791	239-807	239-823	■ 239-840
	28	Resistant Steel.				239-776	239-792	239-808	239-824	239-841
	30						239-793	239-809	239-825	239-842
32	*DIN 7343 Max. "D" Dimension							239-720		
35	for 1.2 mm size is 1.30 mm, for					239-794	239-810	239-826	239-843	
40	2.5 mm is 2.80 mm					239-795	239-811	239-827	239-844	
45						239-796		239-828	239-845	
50				▲ 240-758 Type 302 Stainless Steel			239-813	239-829	239-846	
55				■ 240-774 420 Stainless Steel				239-830	239-847	
60				◆ 239-832 Heavy Medium					239-848	

PKG QTY. 100 - All above sizes

Nominal Diameter	6 mm	8 mm	10 mm	12 mm	Nom. Dia.	14 mm	16 mm	20 mm	
"D" Exp. Dia.	6.50-6.25	8.63-8.30	10.80-10.35	12.85-12.40	"D" Exp. Dia.	14.95-14.45	17.00-16.45	21.10-20.40	
Hole Size	6.13-5.95	8.17-7.93	10.20-9.93	12.22-11.90	Hole Size	14.25-13.85	16.25-15.85	20.25-19.85	
Mtrl. Thickness	0.50	0.67	0.84	1.00	Mtrl. Thickness	1.20	1.30	1.70	
L E N G T H	12 mm	239-849	PKG QTY. 50		L E N G T H	(mm)	PKG QTY. 25		
	14	239-850				30	239-940		
	16	239-851				40		239-947	
	18	239-852	239-887			50	239-D11-1C	239-948	
	20	239-853	239-888	239-906		60	239-943	● 239-949	239-956
	22	239-854	239-889	239-907		70	239-944	239-950	239-957
	24	239-855	239-890	239-908		80	239-945		239-958
	26	239-856	239-891	239-909		100		239-952	239-D10-1Y
	28	239-857	239-892	239-910		120		239-953	
	30	239-858	239-893	239-911		140			239-960
	35	239-859	239-894	239-912		PKG QTY. 10			
	40	239-860	239-895	239-913		● 239-949 Heavy Duty			
	45	239-861	239-896	239-914		Above Nominal Diameters 14,			
	50	239-862	239-D15-1W	239-915		16 & 20 mm are furnished only in			
	55	239-863	239-898	239-916		Alloy Steel (6150).			
60	239-864	239-899	239-917						
65	239-865	239-900	239-918						
70	239-866	239-901	239-919						
75		239-902	239-920						
80	PKG QTY. 50	239-903	239-921						
90		239-904	239-922						
100		239-905	239-D09-1C	239-939					

Inch and **Metric**  
Pouce et **Métrique**

**SPIROL**

**Coiled Spring Pins Assortments**  
Assortiments de goupilles élastiques spirales

**ASSORTMENT 805-440A**  
**ASSORTIMENT**

**METRIC & INCH**  
**Coiled Spring Pins**  
**Carbon Steel - Plain Finish**

**24 ITEMS - 350 PIECES**



Regular Size Welded STEEL drawer is finished in Grey enamel. Drawer will fit into the Slide Racks shown on page A2

Shipping Wt. **2.85 kg** (6-1/4 lbs.)

Name	Outside Diameter	Compatible Hole Diameter	Spaenaur No.	Pin Length	Qty.	Page
Coiled Spring Pin Carbon Steel Plain Finish Metric ISO 8750	2.0mm	1.97mm - 2.07mm	239-764	5mm	20	E106
			239-766	8mm		
	2.5mm	2.47mm - 2.58mm	239-781	6mm		
			239-783	10mm		
	3.0mm	2.97mm - 3.10mm	239-798	8mm		
			239-800	12mm		
	4.0mm	3.97mm - 4.10mm	239-814	8mm	15	
			239-817	14mm		
			239-822	24mm		
	5.0mm	4.95mm - 5.12mm	239-832	10mm		
			239-835	16mm		
			239-840	26mm		
	6.0mm	5.95mm - 6.13mm	239-849	12mm	10	
			239-853	20mm		
			239-857	28mm		
			239-858	30mm		
	6.3mm	6.25mm - 6.45mm	239-880	45mm		
			239-890	24mm		
8.0mm	7.93mm - 8.17mm	239-894	35mm	E106		
		239-896	45mm			
10.0mm	9.93mm - 10.20mm	239-906	20mm			
		239-911	30mm			
Spring Pin Coiled Carbon Steel Plain Finish	1/4"	0.247" - 0.256"	239-376	1/2"	15	E103
			239-379	11/16"		

**PLASTIKIT 804-003A**  
«PLASTIKIT»

**METRIC**

**COILED SPRING PINS**  
**Carbon Steel - Plain Finish**  
**25 SIZES - 205 PIECES**

Clear plastic box with hinged lid. Size: 1" x 2-3/4" x 4-1/2"



Outside Diameter	Compatible Hole Diameter	Spaenaur No.	Pin Length	Qty.	Page
0.8mm	0.080mm - 0.83mm	240-754	10mm	10	E106
		240-760	6mm		
1.0mm	1.00mm - 1.03mm	240-762	10mm		
		240-765	16mm		
		239-752	6mm		
		239-754	10mm		
1.5mm	1.50mm - 1.57mm	239-756	14mm		
		239-760	22mm		
		239-767	10mm		
		239-772	20mm		
2.0mm	1.97mm - 2.07mm	239-776	28mm		
		239-799	10mm		
3.0mm	2.97mm - 3.10mm	239-804	20mm		
		239-809	30mm		
		239-811	40mm		
		239-820	20mm		
4.0mm	3.97mm - 4.10mm	239-825	30mm	5	
		239-827	40mm		
5.0mm	4.95mm - 5.12mm	239-837	20mm		
		239-842	30mm		
		239-844	40mm		
		239-853	20mm		
6.0mm	5.95mm - 6.13mm	239-858	30mm		
		239-860	40mm		
		239-862	50mm		