

# Round Pilot Weld Nuts / Nut Retainers

Inch and Metric

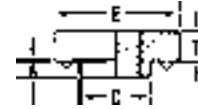
Écrous de montage ronds à souder / Cages d'écrous

Pouce et Métrique



## ROUND PILOT WELD NUTS - INCH Sizes

STEEL C-1015 Plain Finish and STAINLESS STEEL 300 Series



Pilot-projection Weld Nuts provide load bearing threads in sheets too thin to thread. Engineered projections - no burnouts in thin sheets. Round body - no indexing. Fits on narrow flanges. Self-locating pilot shank protects threads from weld splatter, eliminating the need to retap.

Thread fits are UN-2B

PKG QTY. 100

INCH SIZES								
Thread Size	SPAENAUR No.		T	C Max.	E	A Max.	*Hole Size in Sheet	Thickness
	STEEL	Stainless Steel						
6-32	N-187	—	3/32	.191	11/32	.030	.193	.030
8-32	N-188	—	7/64	.216	3/8	.030	.218	to .060
10-24	N-190	208-811	5/32	.248	7/16	.030	.250	
10-32	N-189	—	5/32	.248	7/16	.030	.250	
1/4-20	N-193	208-810	3/16	.315	33/64	.048	.316	.050 to .095

\*(-.000 to +.004)

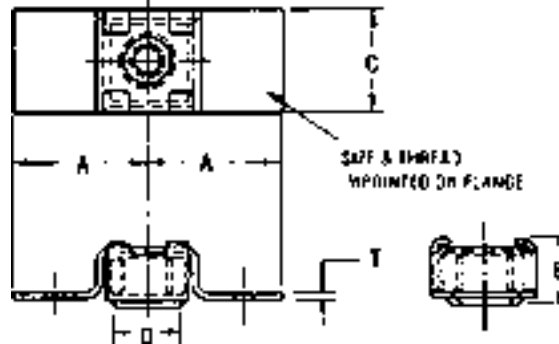
## FLOATING NUT RETAINERS - INCH and METRIC Sizes

**STEEL**

Material: SAE 1010-1110 or Equivalent

Plain Finish

Thread: Class 2B



INCH Sizes		Regular Metric Coarse Thread METRIC Sizes		Dimension in Inches					PKG QTY.
SPAENAUR No.	Nut Size	SPAENAUR No.	Nut Size	A	B	C	D	T	
208-273	8-32	—	—	3/4	5/16	1/2	5/16	.037-.045	100
208-274	10-24	—	—	3/4	5/16	1/2	5/16	.037-.045	100
—	—	208-011	M5	3/4	5/16	1/2	5/16	0.37-0.45	100
—	—	208-016	M6	3/4	5/16	1/2	5/16	.037-.045	100
208-275	12-24	—	—	7/8	13/32	9/16	.398	.045-.050	100
208-276	1/4-20	—	—	7/8	13/32	9/16	.398	.045-.050	100
208-277	1/4-28	—	—	7/8	13/32	9/16	.398	.045-.050	100
208-278	5/16-18	208-013	M8	1	15/32	25/32	.523	.045-.050	50
N-61	5/16-18	—	—	7/8	7/16	5/8	1/2	.045-.050	50
208-279	5/16-24	—	—	1	1/2	25/32	.523	.045-.050	50
208-280	3/8-16	208-014	M10	1	1/2	25/32	.523	.045-.050	50
N-62	3/8-24	—	—	7/8	7/16	.72	1/2	.045-.050	50
208-281	7/16-14	—	—	1-1/8	25/32	15/16	3/4	.045-.050	50
208-282	1/2-13	—	—	1-1/8	25/32	15/16	3/4	.045-.050	25

CATALOG 14

SPAENAUR