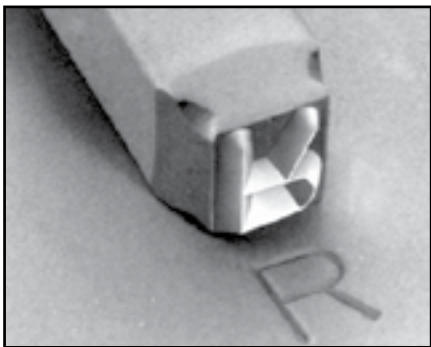


Inch

# Stamping Punch Sets

Pouce

Jeux de poinçons



## A-Z and Numeric Identification Tools



Featuring the thumb groove that helps you to:

1. See the thumb side.
2. Feel the thumb side.
3. Get positive grip.
4. Make your mark with no mistake.

The relatively deep groove across the thumb side of the stamp corresponds to the bottom of the character. It provides an easily seen, quickly felt index mark for locating the thumb side of the stamp and gives a positive thumb grip. You get marks and no mistakes.

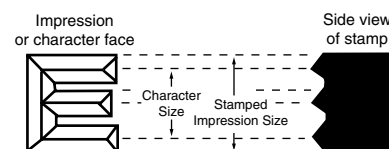
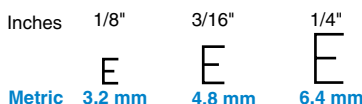
Sets packed in sturdy wood box with lid. Both pieces made from a solid block of wood. Lid serves as handy holder for composition.

### Machine-made

Fine quality steel, special heat treatment. Sharp characters in gothic style insure deep, clear impressions. They can mark steel up to a hardness of 50 Rockwell. Crown hammer end. More identification marks per dollar.

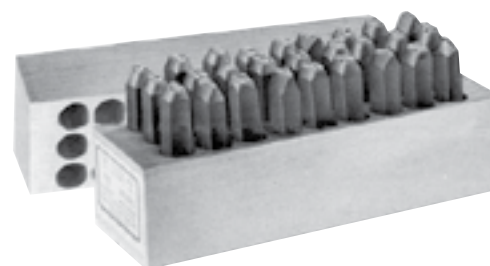
### To Determine Sharp Face Character Size

It is not unusual to overestimate the size of character needed. A character is measured from cutting edge to cutting edge.



### LETTER SETS, A-Z plus period (27 characters).

SPAENAUR No.	Type Height	Weight Lbs.	Size of Steel	
			Sq.	Length
876-1743	1/8"	1-1/2	1/4"	2-3/8"
876-1744	3/16"	2	5/16"	2-7/16"
876-1745	1/4"	3	3/8"	2-5/8"



### NUMERIC SETS, 0-8 (9 characters) 6 and 9 are interchangeable.

SPAENAUR No.	Type Height	Weight Lbs.	Size of Steel	
			Sq.	Length
876-1746	1/8"	1/2	1/4"	2-3/8"
876-1747	3/16"	3/4	5/16"	2-7/16"
876-1748	1/4"	1	3/8"	2-5/8"



### COMBINATION SETS, A-Z plus period and Numbers 0-8 (36 characters of one size). 6 and 9 are interchangeable.

SPAENAUR No.	Type Height	Weight Lbs.	Size of Steel	
			Sq.	Length
876-1749	1/8"	2	1/4"	2-3/8"
876-1750	3/16"	2-1/2	5/16"	2-7/16"
876-1751	1/4"	3	3/8"	2-5/8"



All sets on this page  
PKG QTY. 1