









T-Nuts

Inch

Écrous encastrés

Pouce

T-NUTS PLAIN STEEL		FINE (UNF) AND COARSE (UNC) THREADS							
		SPAENAUR No.	THREAD SIZE	BASE SIZE	APPROX. BARREL LENGTH	BARREL DIA.	ADDITIONAL DATA	PKG QTY.	
 Round Base	N-276	1/4"-20	3/4" Dia.	9/16"	.311/.306"	ROUND BASE with 3 Rivet Holes and 3 Bosses	100		
	2261	5/16"-18	7/8" Dia.	3/8"	.395/.370"		100		
Round Base 	N-179 191-M02-1N 2262ZP	1/4"-20 3/8"-16 3/8"-16	3/4" Dia. 1" Dia. 1" Dia.	5/16" 7/16" 7/16"	.311/.306" .471/.466" .471/.466"	ROUND BASE with 3 Rivet Holes	100 100 100		
Round Base 	191-087 191-088 N-74 191-028 N-59 N-291	10-24 1/4"-20 1/4"-20 5/16"-18 3/8"-24 3/8"-16	3/4" Dia. 3/4" Dia. 3/4" Dia. 7/8" Dia. 1" Dia. 1" Dia.	9/32" 5/16" 9/16" 3/8" 7/16" 7/16"	.245/.240" .311/.306" 5/16" .390" 13/32" .471/.466"	ROUND BASE with 3 Bosses on Barrel Side	100 50 50 100 50 100		
  Straight or Curved Prongs (our option)	191-026 N-22 191-M04-1N N-17	4-40 6-32 8-32 8-32	3/8" Dia. 9/16" Dia. 12.7 mm 3/4" Dia.	7/64" 1/4" 6.4 mm 1/4"	.130" .164/.157" 5.6 mm .213/.208"	3 Prongs 3 Prongs 3 Prongs 3 Prongs	100 100 100 100		
	N-23 191-022 191-292	10-24 10-24 10-24	3/4" Dia. 3/4" Dia. 23/32" Dia.	9/32" 3/16" 7/16"	.232/.227" .243" .243"	3 Prongs 3 Prongs 3 Prongs	100 100 100		
	191-M05-1T 191-329 191-297	10-32 10-32 1/4"-20	18 mm 3/4" Dia. 3/4" Dia.	7.9 mm 9/32" 9/32"	6.2 mm .318/.312" .318/.312"	3 Prongs 3 Prongs 3 Prongs	100 100 100		
	N-20 191-298 191-M78-1N 191-300	1/4"-20 5/16"-18 5/16"-18 3/8"-16	3/4" Dia. 7/8" Dia. 7/8" Dia. 1" Dia.	5/16" 3/8" 1/2" 7/16"	.311/.306" .378/.373" .392/.387" .471/.466"	4 Prongs 3 Prongs 4 Prongs 4 Prongs	100 100 100 100		
	  Curved Prongs	191-011 N-227 N-21	10-24 1/4"-20 5/16"-18	45/64" Dia. 3/4" Dia. 7/8" Dia.	5/16" 9/16" 3/8"	.243" .311/.306" .391/.386"	3 Prongs 3 Prongs 4 Prongs	100 100 100	
		 Rectangular Base	191-020 191-021 191-M77-1C	10-32 5/16"-18 5/16"-18	1/2" x 3/4" 9/16" x 7/8" 1/2" x 1-1/4"	5/16" 3/8" 7/8"	.243" .390" .375"	RECTANGULAR BASE with 2 Rivet Holes	100 100 100
			N-258 N-269 *1470 191-003	10-24 10-32 1/4"-20 1/4"-20	1/2" x 3/4" 1/2" x 3/4" 1/2" x 3/4" 1/2" x 3/4"	9/32" 9/32" 5/16" 5/16"	.232/.227" .245/.227" .312/.292" .312/.292"	2 Holes No Holes 4 Bosses 2 Holes	100 100 50 100



Rivet Hole Sizes : Up to 1/4" Thread Size — .098"
3/8" and Up Thread Size — .145"

*Note: No. 1470 has 4 welding bosses on base, protruding out opposite side to barrel (no holes).

SPAENAUR CATALOG 14

T-Nuts Plain Steel

4 Serrated Prongs
Stepped Barrel T-Nuts
Plain or Zinc Plated
our option.



Small Base

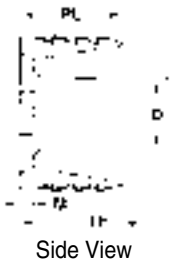


Large Base

Inch Sizes

PKG QTY. 100

SPAENAUR No.	Thread Size	Base	Dimensions in Inches					
			TH total height	D barrel dia.	S step dia.	PL prong length	FW x FL flange dimensions	M material thickness
191-029	8-32 x 3/16	Small	.236	.225	—	.210	.640 x .625	.043
* 191-031	8-32 x 7/16	Small	.485	.225	.290	.300	.700 x .625	.043
191-032	10-24 x 5/16	Small	.355	.245	—	.300	.700 x .625	.043
191-033	10-24 x 7/16	Small	.485	.245	.290	.300	.700 x .625	.043
191-M82-1K	10-32 x 7/16	Small	.450	.260	—	.313	.690 x .630	.047
191-009	1/4-20 x 5/16	Small	.355	.305	—	.300	.700 x .625	.047
191-035	1/4-20 x 1/4	Large	.300	.320	—	.250	.885 x .830	.057
191-036	1/4-20 x 3/8	Large	.435	.320	—	.400	.885 x .830	.057
191-037	1/4-20 x 7/16	Large	.500	.320	.360	.400	.885 x .830	.057
191-038	5/16-18 x 3/8	Large	.490	.385	—	.400	.885 x .830	.057
191-039	5/16-18 x 5/8	Large	.650	.385	.430	.415	.885 x .830	.057
191-040	3/8-16 x 3/8	Large	.490	.440	—	.400	.885 x .830	.057



Side View



Side View
(Stepped Barrel)



Bottom View

* Yellow Zinc Plated

Metric Sizes

PKG QTY. 100

SPAENAUR No.	Thread Size Dia. x Pitch x TH	Base	Dimensions in Inches					
			TH total height	D barrel dia.	S step Dia.	PL prong length	FW x FL flange dimensions	M material thickness
191-318	M4 x 0.7 x 6mm	Small	.236	.220	—	.210	.670 x .625	.043
191-319	M4 x 0.7 x 10mm	Small	.390	.220	.290	.300	.700 x .625	.043
191-320	M5 x 0.8 x 6mm	Small	.236	.250	—	.210	.670 x .625	.043
191-321	M5 x 0.8 x 10mm	Small	.395	.250	—	.300	.700 x .625	.043
191-322	M6 x 1.0 x 6mm	Small	.236	.305	—	.210	.670 x .625	.047
191-M21-1W	M6 x 1.0 x 10mm	Large	.430	.320	—	.350	.885 x .830	.057
191-324	M6 x 1.0 x 12mm	Small	.490	.320	—	.400	.885 x .830	.057
191-M12-1A	M8 x 1.25 x 10mm	Small	.430	.385	—	.344	.840 x .880	.057
191-326	M8 x 1.25 x 12mm	Large	.490	.385	—	.400	.885 x .830	.057
191-327	M8 x 1.25 x 17mm	Large	.650	.385	.430	.415	.885 x .830	.057
191-328	M10 x 1.5 x 12mm	Large	.490	.460	—	.400	.885 x .830	.057

Spaenaur No.
191-023

STEEL - Plain Finish

10-24 UNC
4-Prong T-NUT

Barrel O/D243"
Barrel Length 9/32"
Base Size 11/16" X 45/64"



PKG QTY. 100

For more Inch and Metric T-Nuts see page C58 & C60.

T-Nuts / Well Nut® Screw Anchors Assortment

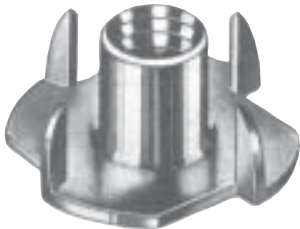
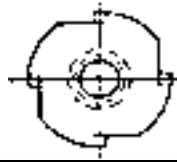
Inch and Metric

Contre-écrous auto-filetants / Outils / Assortiment d'écrous à oreilles

Pouce et Métrique

**T-Nuts
18-8 Stainless Steel**

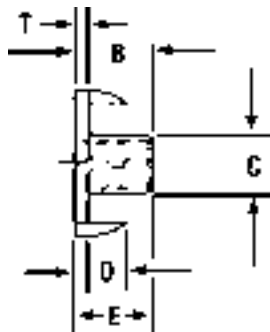
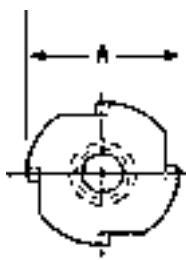
Round Base
4 Straight Prongs



SPAENAUR No.	Thread Size	Base Size (Dia.)	Barrel Length	Barrel Dia.	PKG QTY.
191-800	1/4"-20 UNC	3/4"	5/16"	.306"-.311"	50
191-801	1/4"-20 UNC	3/4"	3/8"	.306"-.311"	50
191-802	1/4"-20 UNC	3/4"	7/16"	.306"-.311"	50
191-M11-1X	1/4"-20 UNC	3/4"	1/2"	.306"-.311"	50
191-804	5/16"-18 UNC	7/8"	3/8"	.386"-.391"	25
191-805	5/16"-18 UNC	7/8"	1/2"	.386"-.391"	25
191-806	3/8"-16 UNC	1"	7/16"	.466"-.471"	25

C

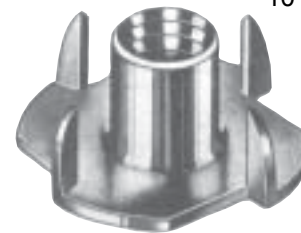
ROUND BASE



Plain Steel

GRADE 1010

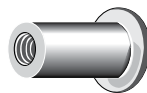
Metric T-Nuts



Metric Regular COARSE Thread

SPAENAUR No.	Thread Dia.	Pitch	No. of Prongs	Nominal Dimensions - in Millimetres						Drill Size mm	PKG QTY.
				A	B	C	D	E	T		
191-M07-1W	M4	0.70	4	15	4.5	5.6	4.0	5.7	1.2	5.8	100
191-M79-1T	M4	0.70	4	15	6.8	5.6	4.0	8.0	1.2	5.8	100
191-303	M5	0.80	4	18	7.8	6.5	5.0	9.0	1.2	6.7	100
191-304	M6	1.00	4	19	7.8	7.6	6.0	9.0	1.2	7.8	100
191-M03-1C	M8	1.25	4	22.2	9.4	9.9	7.0	11.0	1.6	10.25	100
191-M06-1K	M10	1.50	4	25.5	11.2	11.6	7.7	13.0	1.8	11.9	100

ASSORTMENT 805-544



**INCH & METRIC SIZES
WELL NUT®
SCREW ANCHORS
Neoprene**

15 SIZES — 130 PIECES

Furnished in Regular Size grey enamel Steel drawer with scooped bins for easy access. Drawer will fit into Slide Racks shown on page A2



Thread Size	Spaenaur No.	Compatible Material Thickness	Qty.	Page	
#6-32	102-200	0.015"-0.156"	10	C109	
	102-201	0.375"-0.607"			
#8-32	102-202	0.015"-0.156"			
	102-204	0.015"-0.192"			
	102-207	0.030"-0.277"			
	102-209	0.035"-0.232"			
	102-210	0.312"-0.450"			
#10-32	102-205	0.312"-0.645"			
	102-211	0.015"-0.111"			5
	1/4"-20	102-212			
102-213	0.250"-0.457"				
5/16"-18	102-214	0.015"-0.156"			
3/8"-16	102-215	0.015"-0.125"			
M6 x 1.00	102-217	0.031"-0.187"	10		

Shipping Weight: **2.43 kg** (5.36 lbs.)

CATALOG 14

SPAENAUR

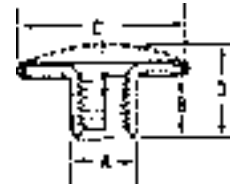
Inch

T-Nuts

Pouce

Écrous encastrés

CAPPED and SOLID ONE PIECE T-NUTS Round Base

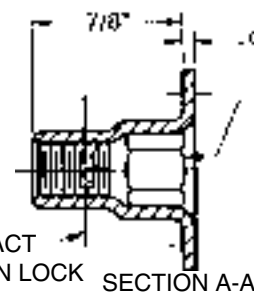
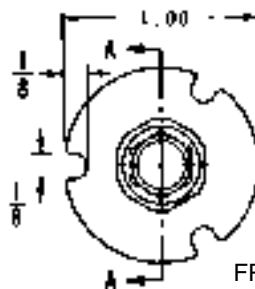


Capped and Solid Teenut fasteners are bushings with internal threads and a substantial base, combining the functions of a nut and washer. They offer many design advantages, and frequently cut weight, labour, and cost.

SPAENAUR No.	SIZE	Material & Finish	A Barrel O.D.	B Barrel Lgth.	C Head O.D.	D Height O.A.	PKG QTY.
N-255 (Solid)	8-32	Brass, Nickel Plated	13/64"	9/32"	33/64"	13/32"	100
N-80 (Solid)	10-32	Brass Nickel Plated	1/4"	1/4"	17/32"	3/8"	100
191-043 (Capped)	1/4"-20	Steel, Nickel Plated	5/16"	7/32"	1/2"	21/64"	100

For Pallets or Crates

T-NUT
Spaenaur No. N-259
5/16"-18
Plain Steel

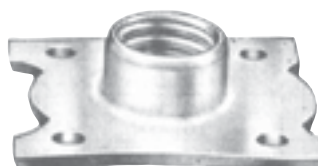


USE HEX KEY
WRENCH 5/16"
ACROSS FLATS

IMPACT
FRICTION LOCK SECTION A-A

PKG QTY. 100

Spaenaur No.
191-M80-1N
Plate Type T-Nut
Plain Steel
PKG QTY. 100



Thread: 1/2"-13
UNC-2B
Plate: 1-11/32" x 1-1/2"
4 Holes: 5/32" dia.