

Round Pilot Weld Nuts / Nut Retainers

Inch and Metric

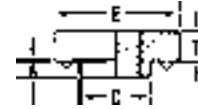
Écrous de montage ronds à souder / Cages d'écrous

Pouce et Métrique



ROUND PILOT WELD NUTS - INCH Sizes

STEEL C-1015 Plain Finish and STAINLESS STEEL 300 Series



Pilot-projection Weld Nuts provide load bearing threads in sheets too thin to thread. Engineered projections - no burnouts in thin sheets. Round body - no indexing. Fits on narrow flanges. Self-locating pilot shank protects threads from weld splatter, eliminating the need to retap.

Thread fits are UN-2B

PKG QTY. 100

INCH SIZES								
Thread Size	SPAENAUR No.		T	C Max.	E	A Max.	*Hole Size in Sheet	Thickness
	STEEL	Stainless Steel						
6-32	N-187	—	3/32	.191	11/32	.030	.193	.030
8-32	N-188	—	7/64	.216	3/8	.030	.218	to .060
10-24	N-190	208-811	5/32	.248	7/16	.030	.250	
10-32	N-189	—	5/32	.248	7/16	.030	.250	
1/4-20	N-193	208-810	3/16	.315	33/64	.048	.316	.050 to .095

*(-.000 to +.004)

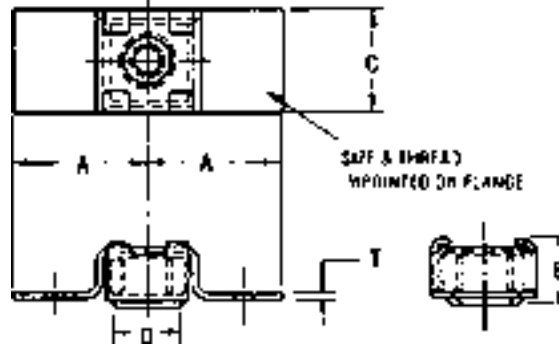
FLOATING NUT RETAINERS - INCH and METRIC Sizes

STEEL

Material: SAE 1010-1110 or Equivalent

Plain Finish

Thread: Class 2B



INCH Sizes		Regular Metric Coarse Thread METRIC Sizes		Dimension in Inches					PKG QTY.
SPAENAUR No.	Nut Size	SPAENAUR No.	Nut Size	A	B	C	D	T	
208-273	8-32	—	—	3/4	5/16	1/2	5/16	.037-.045	100
208-274	10-24	—	—	3/4	5/16	1/2	5/16	.037-.045	100
—	—	208-011	M5	3/4	5/16	1/2	5/16	0.37-0.45	100
—	—	208-016	M6	3/4	5/16	1/2	5/16	.037-.045	100
208-275	12-24	—	—	7/8	13/32	9/16	.398	.045-.050	100
208-276	1/4-20	—	—	7/8	13/32	9/16	.398	.045-.050	100
208-277	1/4-28	—	—	7/8	13/32	9/16	.398	.045-.050	100
208-278	5/16-18	208-013	M8	1	15/32	25/32	.523	.045-.050	50
N-61	5/16-18	—	—	7/8	7/16	5/8	1/2	.045-.050	50
208-279	5/16-24	—	—	1	1/2	25/32	.523	.045-.050	50
208-280	3/8-16	208-014	M10	1	1/2	25/32	.523	.045-.050	50
N-62	3/8-24	—	—	7/8	7/16	.72	1/2	.045-.050	50
208-281	7/16-14	—	—	1-1/8	25/32	15/16	3/4	.045-.050	50
208-282	1/2-13	—	—	1-1/8	25/32	15/16	3/4	.045-.050	25

CATALOG 14

SPAENAUR

Metric

Hex Projection Weld Nuts / Round Pilot Weld Nuts / Square Weld Nuts

Métrique

Écrous hexagonaux à souder par bossage / Écrous de montage ronds / Écrous à souder carrés

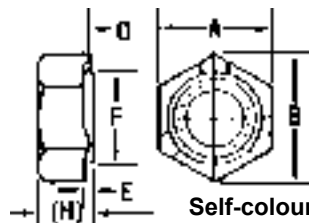
METRIC HEXAGON WELD NUTS

Steel (max. carbon content 0.25%)

3-PROJECTION TYPE



DIN 929



Self-colour

*Pilot hole is to H11 tolerance

Coarse Thread Size	SPAENAUR No.	A Width Across Flats	B Min. Width Across Corners	H Thickness	D Projection Height	E Pilot Height	*F Pilot Diameter
M3 x 0.50	208-001	7.5	8.15	3.0	0.25	0.55	4.5
M4 x 0.70	208-002	9.0	9.38	3.5	0.35	0.65	6.0
M5 x 0.80	208-003	10.0	10.95	4.0	0.40	0.70	7.0
M6 x 1.00	208-004	11.0	12.02	5.0	0.40	0.75	8.0
M7 x 1.00	208-005	12.0	13.9	5.5	0.45	0.80	9.0
M8 x 1.25	208-006	14.0	15.38	6.5	0.50	0.90	10.5
M10 x 1.50	208-007	17.0	18.74	8.0	0.65	1.15	12.5
M12 x 1.75	208-K17-1W	19.0	20.91	10.0	0.80	1.40	14.8
M14 x 2.00	208-009	22.0	24.27	11.0	1.00	1.80	16.8
M16 x 2.00	208-010	24.0	26.51	13.0	1.00	1.80	18.8

All Dimensions in millimetres

PKG QTY. 100

METRIC SIZES



ROUND PILOT WELD NUTS

SHORT PILOT

Copper Plated STEEL C-1015 and STAINLESS STEEL 302



Pilot-projection Weld Nuts provide load bearing threads in sheets too thin to thread. Engineered projections - no burnouts in thin sheets. Round body - no indexing. Fits on narrow flanges. Self-locating pilot. Shank protects threads from weld splatter. No retapping.

Thread fits are Metric 6H

PKG QTY. 100

Coarse Thread Size	SPAENAUR No.		T	C Max.	E Max.	A Max.	*Hole Size in Sheet	Min. Panel Thickness
	Copper Pltd. STEEL	Stainless Steel 302						
M3 x 0.50	208-050		1.5	4.35	7.95	0.76	4.40	0.77
M4 x 0.70	208-051	208-801	2.6	5.50	9.55	0.76	5.55	0.77
M5 x 0.80	208-052	208-802	3.8	6.30	11.10	0.76	6.35	0.77
M6 x 1.00	208-053	208-803	4.6	8.00	13.20	1.24	8.05	1.25

All Dimensions in millimetres

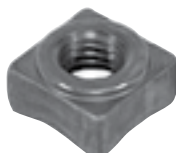
*(+0.00)

SQUARE WELD NUTS

DIN 928

Steel (max. carbon content 0.25%)

Plain Finish
4 Weld Projections
PKG QTY. 100



METRIC SIZES

All dimensions in millimetres

Coarse Thread Size	SPAENAUR No.	Width Across Flats	Min. Width Across Corners	Thick-ness	Projection Height
M5 x 0.80	208-045	9	12	4.2	0.8
M6 x 1.00	208-046	10	13	5	0.8
M8 x 1.25	208-K08-1A	14	18	6.5	1
M10 x 1.50	208-049	17	22	8	1.2
M12 x 1.75	208-048	19	25	9.5	1.4