

Wing Nuts

Inch

Écrous papillon

Pouce

Wing Nuts are ideal for applications which require frequent or occasional on-off hand pressure torque or release.

CORROSION-RESISTANT WING NUTS



Available in
3 Materials
Inch Sizes

Contact Sales Desk For Package Quantities

STEEL WING NUTS



Zinc Plated
EXTRA STRONG!
(COLD FORGED)

Inch Sizes

Thread Size	ORDER BY SPAENAUR NUMBERS		
	BRASS	18-8 STAINLESS STEEL	ZINC DIE-CAST
5-40 UNC			
6-32 UNC	WN-502	WN-2000	
8-32 UNC	WN-503	WN-2001	
10-24 UNC	WN-504	WN-2002	
10-32 UNF	WN-510	WN-2003	
12-24 UNC	WN-505	214-111	
1/4"-20 UNC	WN-500	WN-2004	
1/4"-28 UNF	WN-511		
5/16"-18 UNC	WN-506	WN-2005	
5/16"-24 UNF	212-W02-1K		
3/8"-16 UNC	WN-507	WN-2006	
3/8"-24 UNF	WN-513		
7/16"-14 UNC	WN-508	214-002	WN-12
1/2"-13 UNC	WN-509	WN-2007	
1/2"-20 UNF	212-001		
5/8"-11 UNC	WN-514	214-219	
3/4"-10 UNC	WN-515		

Thread Size	SPAENAUR No.	Wing Spread	PKG QTY.
6-32 UNC	WN-1	21/32"	50
8-32 UNC	WN-2	27/32"	50
10-24 UNC	WN-3	27/32"	50
10-32 UNF	WN-4	27/32"	50
12-24 UNC	211-025	1-1/16"	50
1/4"-20 UNC	WN-6	1-1/16"	50
5/16"-18 UNC	WN-7	1-7/32"	50
3/8"-16 UNC	WN-8	1-13/32"	50
7/16"-14 UNC	WN-9	1-13/16"	25
7/16"-20 UNF	WN-19	1-13/16"	25
1/2"-13 UNC	WN-10	1-7/8"	25
5/8"-11 UNC	211-001	2-1/2"	25
3/4"-10 UNC	211-002	2-11/16"	25

STAMPED STEEL WING NUTS

ZINC PLATED
Style 1 - Type D



PKG QTY. 100

SPAENAUR No.	Inch Sizes	
	Thread Size	Wing Spread
211-020	6-32	3/4"
211-021	8-32	3/4"
211-022	10-32	7/8"
211-018	10-24	7/8"
211-019	1/4"-20	1-1/16"
211-023	5/16"-18	1-1/4"
211-024	3/8"-16	1-3/8"

Stamped Spring Steel Wing Locknuts



Inch Sizes
ZINC PLATED

SPAENAUR No.	Thread	PKG QTY.
WN-16	8-32	100
WN-15	10-24	100
WN-11	1/4"-20	50
WN-17	5/16"-18	100

ZINC DIE-CAST WING NUTS

Inch Sizes



LOW WASHER BASE



WASHER BASE

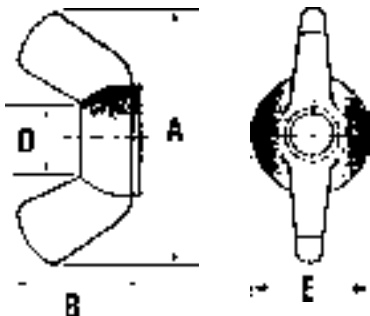
SPAENAUR No.	Thread Size	Wing Spread	Base O.D.	PKG QTY.
213-012	10-24	1-1/32"	15/32"	100
WN-14	1/4"-20	1"	3/4"	50
WN-300	5/16"-18	1"	3/4"	100

MOULDED NYLON THREADED WING NUTS

CORROSION-RESISTANT - NATURAL COLOUR NYLON 6/6 UL 94V2

● NON-MAGNETIC ● HIGH STRENGTH TO WEIGHT RATIO ● WON'T MAR SOFT SURFACES

PC Nylon Wing Nuts have unique properties which make them superior to metal wing and thumb nuts in many electrical and electronic applications where a hand adjustable fastener is needed along with an electrical insulation requirement to eliminate shock. Also recommended for use under corrosive conditions, because they are highly chemical resistant.



SPAENAUR No.	THREAD	Dimensions (in inches)				PKG QTY.
		A	B	D	E	
210-135	4-40	.90	.48	.23	.40	100
210-136	6-32	.90	.48	.23	.40	100
210-137	8-32	.90	.48	.23	.40	100
210-138	10-24	.90	.48	.23	.40	100
210-139		1.10	.63	.30	.56	100
210-140	10-32	.90	.48	.23	.40	100
210-141		1.10	.63	.30	.56	100
210-142	1/4"-20	1.10	.63	.30	.56	100
210-143		1.38	.72	.36	.65	50
210-144	1/4"-28	1.10	.63	.30	.56	100
210-145		1.38	.72	.36	.65	50
210-146	5/16"-18	1.38	.72	.36	.65	50
210-147	3/8"-16	1.38	.72	.36	.65	50
210-148	7/16"-14	1.75	.90	.58	.85	50
210-149	1/2"-13	1.75	.90	.58	.85	50
210-150	9/16"-12	1.75	.90	.58	.85	50

Other uses in product design, repair, and general use in the shop, lab, and factory include:

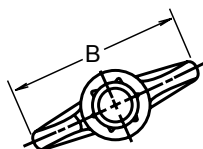
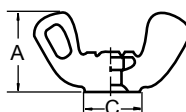
- PLATING EQUIPMENT
- PETRO CHEMICAL PROCESSING EQUIPMENT
- FOOD PROCESSING EQUIPMENT
- BATTERIES
- STERILIZERS
- APPLIANCES
- BUSINESS MACHINES, ETC.



NYLON INSERT WING LOCKNUTS

PKG QTY. 50

Made of die-cast Zamak alloy to prevent rust. Plain or Zinc Finish (our option). 360° Zytel 101 nylon ring resists vibration, provides minimum of 15 reuses. 3B thread fit assure easy, consistent assembly.



SPAENAUR No.	Thread	A Thickness	B Length	C Bearing Diameter
213-W01-1N	8-32 UNC	.500"	1.031"	.375"
213-051	10-24 UNC	.500"	1.031"	.375"
213-052	10-32 UNF	.500"	1.031"	.375"
213-053	1/4"-20 UNC	.594"	1.250"	.438"
213-054	1/4"-28 UNF	.594"	1.250"	.438"
213-055	5/16"-18 UNC	.718"	1.500"	.562"
213-056	3/8"-16 UNC	.718"	1.500"	.562"

METRIC SIZE

WING NUTS

Light Pattern
(American Form)



Metric Regular (Coarse) Thread

*Height and Width dimensions are for general reference only and may vary.

Thread Size Dia. x Pitch mm	* Width mm	* Height mm	COLD FORGED STEEL		PKG QTY.
			Plain	Zinc Plated	
M3 x 0.50	18.70	8.60	211-138	211-138ZP	100
M4 x 0.70	22.50	10.50	211-139	211-139ZP	100
M5 x 0.80	22.50	10.50	211-140	211-140ZP	100
M6 x 1.00	27.20	12.20	211-141	211-141ZP	100
M8 x 1.25	30.00	14.60	211-142	211-142ZP	50
M10 x 1.50	35.00	16.70	211-143	211-143ZP	50
M12 x 1.75	47.00	22.30	211-144	211-144ZP	25

Light Pattern (American Form) Continues on Next Page

WING NUTS

Style 1 - Type D

STAMPED STEEL
ZINC PLATED

Metric Regular (COARSE) Thread

SPAENAUR No.	Dia. x Pitch
211-150	M4 x 0.70
211-151	M5 x 0.80
211-152	M6 x 1.00
211-153	M8 x 1.25



PKG QTY. 100

Wing Nuts

Metric

Écrous papillon

Métrique

WING NUTS

More *Metric Light Pattern* on previous page.



Light Pattern
(American Form)

**Height and Width dimensions on this page, are for general reference only and may vary.*

Thread Size Dia. x Pitch mm	* Width mm	* Height mm	STAINLESS STEEL A2 (304)	BRASS		PKG QTY.
				Plain	Nickel Plated	
M3 x 0.50	17.6	8.6	214-125	—	—	100
M4 x 0.70	17.6	8.6	214-124	—	—	100
M5 x 0.80	21	10	214-119	—	—	100
M6 x 1.00	27	13	214-120	212-513	212-533	100
M8 x 1.25	30	15	214-121	212-514	212-534	50
M10 x 1.50	36	22	214-122	212-515	212-535	50
M12 x 1.75	46	24	214-123	212-516	212-536	25
M14 x 2.00	61	30	214-126	—	—	25
M20 x 2.50	—	—	214-128	—	—	10
M24 x 3.00	—	—	—	—	—	10



Style 220

Medium Pattern

▲Zinc Plated with Clear Chromate Finish.

Dia. x Pitch mm	*Width mm	*Height mm	COLD FORGED ▲STEEL	PKG QTY.
M4 x 0.70	19	9.5	211-W01-1K	100
M5 x 0.80	22	11	211-101	100
M6 x 1.00	27	14	211-102	100
M8 x 1.25	31.5	15	211-103	50
M10 x 1.50	37	17.5	211-104	50
M12 x 1.75	53	24	211-105	50



WING NUTS
Heavy Pattern

DIN 315

Metric

Regular (Coarse) Thread

Thread Size Dia. x Pitch mm	* Width mm	* Height mm	MALLEABLE CASTING		BRASS		PKG QTY.	STAINLESS STEEL A4(316)	PKG QTY.
			Plain	Zinc Plated	Plain	Nickel Plated			
M3 x 0.50	20	10	—	211-121ZP	212-500	212-520	100	—	—
M4 x 0.70	19	9.5	211-122	211-122ZP	212-501	212-521	100	214-112	100
M5 x 0.80	25	12	211-123	211-123ZP	212-502	212-W03-1W	100	—	100
M6 x 1.00	31.5	16	211-124	211-124ZP	212-503	212-523	100	◆214-114	50
M8 x 1.25	37.5	19	211-125	211-125ZP	212-504	212-524	50	214-115	50
M10 x 1.50	49.5	24	211-126	211-126ZP	212-505	212-525	50	—	10
M12 x 1.75	63.5	32	211-127	211-127ZP	212-506	212-W01-1T	25	214-117	5
M14 x 2.00	71.5	36	—	211-120ZP	212-508	—	25	—	—
M16 x 2.00	71.5	36	211-128	■211-128ZP	212-507	212-527	25	—	1
M20 x 2.50	88	45	211-129	211-129ZP	212-509	—	20	—	—
M24 x 3.00	108	55	—	211-130ZP	212-510	—	10	—	—

■ Approximately to standard ◆ W=30, H=15

WING NUTS

Nylon 6/6

Natural Colour
American Form

All Dimensions in Millimeters

SPAENAUR No.	Dia. x Pitch	*Width	*Height	PKG QTY.
210-021	M4 x 0.70	22.80	12.20	100
210-022	M5 x 0.80	22.80	12.20	100
210-023	M6 x 1.00	28.00	16.00	100
210-024	M8 x 1.25	35.10	18.30	50
210-025	M10 x 1.50	35.10	18.30	50

Metric Regular (COARSE) Thread

