

Inch

# Eye Bolt Assemblies / Eye Nuts

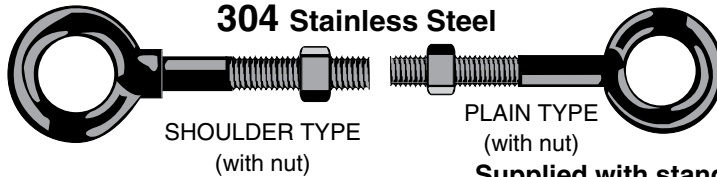
Pouce

Ensembles de boulons à œil / Écrous à œil

## STAINLESS FORGED EYE BOLTS

PLAIN & SHOULDER STYLE

304 Stainless Steel



SHOULDER TYPE  
(with nut)

PLAIN TYPE  
(with nut)

Supplied with standard UNC-2A threads and heavy hex nuts.

Applications in the following industries:

- Food Processing
- Chemical
- Pulp & Paper
- Nuclear
- Marine
- Sewage Disposal
- Petroleum
- Aircraft

SPAENAUR No.		Diameter & Length of Shank	Eye I.D.	Eye O.D.	Min. Thread Length	Approx. Lbs. per 100 Pcs.	Rated Capacity Lbs.
PLAIN TYPE (with nut)	SHOULDER TYPE (with nut)						
024-800	024-810	3/8" x 4-1/2"	3/4"	1-1/2"	1-1/2"	25	1160
024-T02-1X	*024-811	1/2" x 4-1/2"	1"	1-15/16"	2"	41	2150
024-802	024-812	1/2" x 6"	1"	1-15/16"	2"	42	2150
024-803	—	5/8" x 4"	1-3/8"	2-1/2"	2-1/4"	82	3440
024-804	024-814	5/8" x 6"	1-3/8"	2-1/2"	2-1/4"	98	3440
024-805	—	3/4" x 4-1/2"	1-1/2"	2-13/16"	2-1/2"	128	5140
024-806	024-816	3/4" x 6"	1-1/2"	2-13/16"	2-1/2"	138	5140
024-807	—	7/8" x 6"	1-11/16"	3-1/4"	2-1/2"	214	7000
024-808	024-817	1" x 6"	1-13/16"	3-9/16"	3"	280	9370

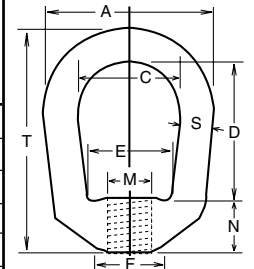
PKG QTY. 1

\*316 Stainless Steel, 1-1/2" Thread Lgth.

## Drop-forged Eye Nuts

1035 Steel Self-coloured Finish and 316 Stainless Steel Plain Finish

SPAENAUR No's.		TAP SIZES		SPECIFICATION IN INCHES							MAX. LOAD TONS
1035 Steel	Stainless Steel 316	STD. M	N	A	C	D	E	F	S	T	
024-047	024-850	1/4"-20	3/8"	1-1/4"	3/4"	1-1/16"	19/32"	1/2"	1/4"	1-11/16"	.26
024-048	024-851	5/16"-18	3/8"	1-1/4"	3/4"	1-1/16"	19/32"	1/2"	1/4"	1-11/16"	.42
024-049	—	3/8"-16	7/16"	1-5/8"	1"	1-1/4"	3/4"	9/16"	5/16"	2-1/16"	.62
—	024-852	3/8"-16	1/2"	2"	1-1/4"	1-1/2"	1"	13/16"	3/8"	2-1/2"	1.12
024-050	—	7/16"-14	5/8"	2"	1-1/4"	1-1/2"	1"	13/16"	3/8"	2-1/2"	.85
024-051	024-849	1/2"-13	5/8"	2"	1-1/4"	1-1/2"	1"	13/16"	3/8"	2-1/2"	1.12
024-052	024-853	5/8"-11	3/4"	2-1/2"	1-1/2"	2"	1-3/16"	1"	1/2"	3-3/16"	1.8
024-053	024-854	3/4"-10	7/8"	3"	1-3/4"	2-3/8"	1-3/8"	1-1/8"	5/8"	3-7/8"	2.6
024-054	—	7/8"-9	1"	3-1/2"	2"	2-5/8"	1-5/8"	1-5/16"	3/4"	4-5/16"	3.6
024-055	—	1"-8	1"	3-1/2"	2"	2-5/8"	1-5/8"	1-5/16"	3/4"	4-5/16"	3.6



Drilled and Tapped UNC-2B

Contact Sales Desk For Package Quantities

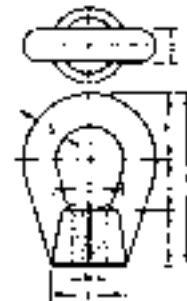
## HEAVY DUTY Drop Forged Eye Nuts

C1035 Steel

Self-coloured Finish

SPAENAUR No.	SPECIFICATIONS IN INCHES										MAX. LOAD TONS
	C	S	D	M	F	E	G	H	T		
024-011	1-1/2"	3/4"	3/4"	3/4"-10	1-3/4"	1-1/4"	1-1/8"	1-1/2"	3-7/8"	5.3	
024-010	1-3/4"	1"	1"	1"-8	2-1/4"	1-5/8"	1-1/4"	1-7/8"	4-3/4"	9.4	
024-056	1-3/4"	1"	1"	1-1/8"-7	2-1/4"	1-5/8"	1-1/4"	1-7/8"	4-3/4"	9.4	
024-057	2"	1-1/4"	1-1/4"	1-1/4"-7	2-7/8"	1-7/8"	1-3/8"	2-1/4"	5-1/2"	14.7	
024-058	2-1/2"	1-3/8"	1-3/8"	1-1/2"-6	3-1/8"	2-1/8"	1-3/4"	2-5/8"	6-1/2"	17.8	

PKG QTY. 1



**Note:** All Eye Bolts and Eye Nuts, whether in blanks or fully machined, as shown on page B267, are covered by our standard warranty. The warranty becomes VOID whenever modifications are made or further machining is done by the buyer, also in cases where these items are subject to an angular lift or pull.

B

Eye Bolts / Eye Nuts

Metric

Boulons à œil / Écrous à œil

Métrique

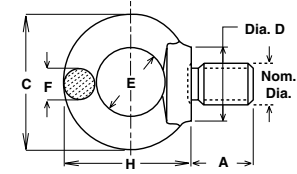


Regular (COARSE) Metric Thread

Drop Forged Eye Bolts

CONFORMING TO **DIN 580**

C15 Carbon Steel - Heat Treated Plain Finish



▲Not to DIN \*Calculated Pull Capacity

B

SPAENAUR No.	NOMINAL DIAMETER mm	PITCH mm	*Max. Pull capacity in kg		DATA IN mm						PKG QTY.
			for 1 Bolt	total for 2 Bolts	A	C	D	E	F	H	
* 026-021	M6	1.00	70	50	13	36	20	20	—	—	10
* 026-021ZP (Zinc Pltd.)	M6	1.00	70	50	13	36	20	20	—	—	10
026-001	M8	1.25	140	95	13	36	20	20	8	36	10
026-002	M10	1.50	230	170	17	45	25	25	10	45	10
026-003	M12	1.75	340	240	20.5	54	30	30	12	53	10
026-004	M16	2.00	700	500	27	63	35	35	14	62	5
026-005	M20	2.50	1200	830	30	72	40	40	16	71	5
026-006	M24	3.00	1800	1270	36	90	50	50	20	90	5
*▲026-022ZP (Zinc Pltd.)	M27	3.00	2180	1500	38	90	50	50	20	90	1
026-007	M30	3.50	3600	2600	45	108	65	60	24	109	1
026-008	M36	4.00	5100	3700	54	126	75	70	28	128	1
026-009	M42	4.50	7000	5000	63	144	85	80	32	147	1
026-010	M48	5.00	8600	6100	68	166	100	90	38	168	1
026-023	M56	5.50	11500	8300	78	184	110	100	42	187	1
026-024	M64	6.00	16000	11000	90	206	120	110	48	208	1

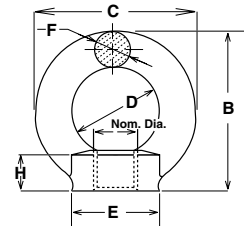


Regular (COARSE) Metric Thread

Drop Forged Eye Nuts

CONFORMING TO **DIN 582**

C15 Carbon Steel - Heat Treated Plain Finish



\*Calculated Pull Capacity

SPAENAUR No.	NOMINAL DIAMETER mm	PITCH mm	*Max. Pull Capacity in kg		DATA IN mm						PKG QTY.
			for 1 Nut	total for 2 Nuts	B	C	D	E	F	H	
* 026-028	M6	1.00	70	50	18	36	20	20	8	8.5	10
026-011	M8	1.25	140	95	36	36	20	20	8	8.5	10
026-011ZP (Zinc Pltd.)	M8	1.25	140	95	36	36	20	20	8	8.5	10
026-012	M10	1.50	230	170	45	45	25	25	10	10	10
026-013	M12	1.75	340	240	53	54	30	30	12	11	10
026-014	M16	2.00	700	500	62	63	35	35	14	13	5
026-015	M20	2.50	1200	830	71	72	40	40	16	16	5
026-016	M24	3.00	1800	1270	90	90	50	50	20	20	5
026-016ZP (Zinc Pltd.)	M24	3.00	1800	1270	90	90	50	50	20	20	5
026-017	M30	3.50	3600	2600	109	108	60	65	24	25	1
026-M01-1P	M36	4.00	5100	3700	128	126	70	75	28	30	1
026-019	M42	4.50	7000	5000	147	144	80	85	32	35	1

**\*WARNING:** Lifting eye nuts and bolts must always be tightened so that they bear solidly on the surface they contact. Loads at right angles to the plane of the eye are prohibited. When a specified position in relation to an axis, edge or the like is specified for the lifting eye nut/bolt when screwed in/on, shims should be used if necessary in order to rule out unacceptable loading. The loading values specified apply solely to the use of lifting eye bolts/nuts according to the present Standard on workpieces made of steel, cast steel or grey cast iron. When the lifting eye nuts are used on a metric bolt thread of medium tolerance class, the thread length must be no less than 0.8 nom. dia. and the tensile strength of the bolt not in excess of 500 N/mm<sup>2</sup>.