

Torque Wrenches / Tool Kit / Torque Screwdriver

Clés dynamométriques / Trousse d'outils / Tournevis dynamométrique



Inch and Metric
Pouce et Métrique

Torque Wrenches

DBP

DIN/ISO 6789

With reversible ratchet

drive as per DIN 3120

Release accuracy tolerance:

± 2% of values selected

at right hand threads,
with locking knob for extra retention
of torque setting



SPAENAUR No.	HAZET No.	■	Nm Torque range	L mm
◆ 992-938	6110-1 CT	3/8"	10-60	335
◆ 992-939	6111-1 CT	3/8"	20-120	389
◆ 992-940	6121-1 CT	1/2"	20-120	435
◆ 992-941	6122-1 CT	1/2"	40-200	545
◆ 992-942	6123-1 CT	1/2"	60-320	663
● 992-943	6143-1 CT	3/4"	100-400	803
● 992-945	6145-1 CT	3/4"	300-800	1280

◆ = in Safe Box

● = without signal transmitter

Torque Wrenches

DBP

To US Standards

With scale graduation in **foot/pounds**

Release accuracy tolerance:

± 3% of values selected

at right hand threads,
with locking knob for extra retention
of torque setting



SPAENAUR No.	HAZET No.	■	B		T		L mm
			ft./lbs.	Nm	ft./lbs.	Nm	
◆ 992-953	6115-1 CT	3/8"	20-100	27.1-135.6	1/2	0.7	390
◆ 992-954	6127-1 CT	1/2"	40-200	54.3-270	1	1.4	545

B = Torque Range

T = Graduation

◆ = in Safe-Box

Tool Kit, empty

Made from sheet steel
5 trays, with padlock

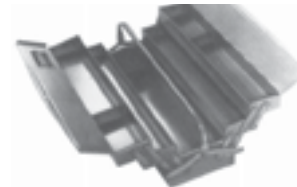
Length **575 mm**
Width **210 mm**
Height **245 mm**

SPAENAUR No. 990-089

(HAZET No. 190 L)

Blue

Store enamelled



Torque Screwdriver SYSTEM 6000 CT

With automatic close-gap release, palpable and audible when torque setting is reached.

Release accuracy tolerance:

± 5% of values selected

Tightening at torque setting is possible both to the right and left, with micrometer adjustment by simply turning the red ring (1) and the handle at the same time (2), scale value will be locked automatically after releasing the red ring (3).

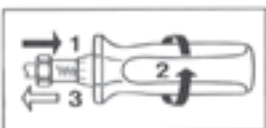
With 1/4" inside hexagon drive for screwdriver bits

With 1/4" outside hexagon drive

Torque Range		Increase/Turn		Graduation	
cNm	Nm	cNm	Nm	cNm	Nm
10-120	—	10	—	1	—
—	1-6	—	1	—	0.1



SPAENAUR No.	HAZET No.	⬡	cNm	Nm	L mm
992-931	6002 CT	1/4"	10-120	—	170
992-932	6003 CT	1/4"	—	1-6	230



N