

Woodruff Keys / Assortments

Inch

Clés Woodruff / Assortiments

Pouce

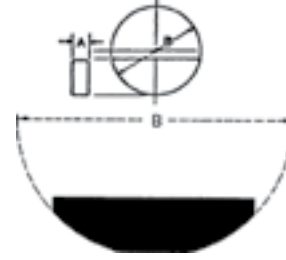
AISI C1035 Steel

Carbon STEEL

Not Plated

also Nickel Alloy (A-8630 Steel)
Heat Treated RC-40/50

Used on armature shafts of starters, generators, etc.
Larger sizes used widely on farm implements, tractors, etc.



Dimensions in Inches

SPAENAUR No.		SIZE		SPAENAUR No.		SIZE	
Carbon Steel	Nickel Alloy	(A) Width x Dia.	(B) PKG QTY.	Carbon Steel	Nickel Alloy	(A) Width x Dia.	(B) PKG QTY.
WK-30		1/16 x 3/8	25	WK-16		3/16 x 1-1/8	25
131-001		1/8 x 3/8	25	WK-17		7/32 x 1-1/8	25
WK-1		1/16 x 1/2	25	WK-18	131-003	1/4 x 1-1/8	25
WK-2		3/32 x 1/2	25	WK-18C		5/16 x 1-1/8	25
WK-3		1/8 x 1/2	25	WK-19		3/16 x 1-1/4	25
WK-4		3/32 x 5/8	25	WK-20		7/32 x 1-1/4	25
131-A01-1T		1/8 x 5/8	25	WK-21	131-004	1/4 x 1-1/4	25
WK-6		5/32 x 5/8	25	WK-21D		5/16 x 1-1/4	25
WK-6-1		3/16 x 5/8	25	WK-21-E		3/8 x 1-1/4	25
WK-7		1/8 x 3/4	25	WK-22		1/4 x 1-3/8	25
WK-8		5/32 x 3/4	25	WK-23		5/16 x 1-3/8	25
131-A04-1M		3/16 x 3/4	25	WK-23F		3/8 x 1-3/8	25
WK-9-1		1/4 x 3/4	25	WK-24		1/4 x 1-1/2	25
WK-10		5/32 x 7/8	25	WK-25		5/16 x 1-1/2	25
WK-11		3/16 x 7/8	25	WK-25G		3/8 x 1-1/2	25
WK-12		7/32 x 7/8	25	WK-27		1/4 x 2-1/8	25
WK-12A		1/4 x 7/8	25	WK-28		5/16 x 2-1/8	25
131-A03-1W		3/16 x 1	25	WK-29	131-005	3/8 x 2-1/8	25
WK-14		7/32 x 1	25	WK-29S		5/16 x 2-3/4	25
WK-15	131-002	1/4 x 1	25	WK-29TX		3/8 x 2-3/4	25
WK-15B		5/16 x 1	25	WK-31		3/4 x 3-1/2	10

PLASTIKIT A-56

KEYS in 12 sizes, as used frequently in every garage.
Size: 1" x 2-3/4" x 4-1/2"

WOODRUFF KEYS

SAE 1035 Carbon Steel

Inch Sizes Not Plated

12 SIZES
100 PIECES



Compatible Shaft Diameter	Spaenaur No.	Machine Key Width	Qty.
1/2"	WK-2	3/32"	10
	WK-3	1/8"	
5/8"	WK-4	3/32"	15
	131-A01-1T	1/8"	
	WK-6	3/32"	
3/4"	WK-8	5/32"	10
7/8"	WK-10	3/16"	5
	WK-11		
1"	131-A03-1W	7/32"	3
	WK-14		
1-1/4"	WK-19	3/16"	2
	WK-20	7/32"	2

ASSORTMENT A-207 16 SIZES
ASSORTMENT 210 PIECES

WOODRUFF KEYS

SAE 1035 CARBON STEEL - Not Plated

Put up in a REGULAR SIZE grey enamelled STEEL drawer. All bins are SCOOPED for easy removal of contents. Drawer will fit into the Slide Racks shown on page A2

Machine Key Width	Spaenaur No.	Compatible Shaft Diameter	Qty.
3/32"	WK-2	1/2"	15
	WK-4	5/8"	
1/8"	WK-3	1/2"	20
	131-A01-1T	5/8"	
5/32"	WK-6	3/4"	15
	WK-8	7/8"	
	WK-10	1"	
3/16"	131-A04-1M	3/4"	12
	WK-11	7/8"	
	131-A03-1W	1"	
	WK-16	1-1/8"	
7/32"	WK-20	1-1/4"	8
1/4"	WK-12A	7/8"	12
	WK-15	1"	
	WK-18	1-1/8"	
5/16"	WK-15B	1"	8


Metric

Woodruff Keys / Assortments

Métrique

Clés Woodruff / Assortiments

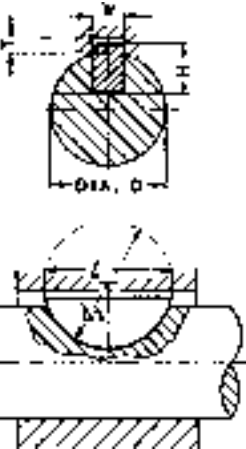
Carbon STEEL METRIC



Woodruff Keys

Not Plated

Conforming to **DIN 6888**
Standard Tolerance: h9



SPAENAUR No.	Nominal Size Width & Height (W) (H)	Dimensions in Millimeters			Use with Shaft Dia. From - To	PKG QTY.
		L	d2	T		
132-001	1.5 x 2.6	6.76	7	2.	4-6	25
132-002	2 x 2.6	6.76	7	1.8	6-8	25
132-003	2 x 3.7	9.66	10	2.9	6-8	25
132-005	2.5 x 3.7	9.66	10	2.9	8-10	25
132-006	3 x 3.7	9.66	10	2.5	8-10	25
132-007	3 x 5	12.65	13	3.8	8-10	25
132-008	3 x 6.5	15.72	16	5.3	8-10	25
132-A11-1Y	4 x 5	12.65	13	3.5	10-12	25
132-010	4 x 6.5	15.72	16	5.	10-12	25
132-011	4 x 7.5	18.57	19	6.	10-12	25
132-012	5 x 6.5	15.72	16	4.5	12-17	25
132-013	5 x 7.5	18.75	19	6	12-17	25
132-014	5 x 9	21.63	22	7.	12-17	25
132-015	6 x 7.5	18.57	19	5.1	17-22	25
132-016	6 x 9	21.63	22	6.6	17-22	25
132-017	6 x 10	24.49	25	7.6	17-22	25
132-018	6 x 11	27.35	28	8.6	17-22	25
132-019	8 x 9	21.63	22	6.2	22-30	25
132-020	8 x 11	27.35	28	8.2	22-30	25
132-021	8 x 13	31.43	32	10.2	22-30	25
132-022	10 x 11	27.35	28	7.8	29-38	25
132-023	10 x 13	31.43	32	9.8	29-38	25

ASSORTMENT 805-469

WOODRUFF KEYS

METRIC
DIN 6888

Carbon Steel
Not Plated

21 SIZES
280 PIECES



Furnished in a regular size grey enamelled steel drawer, with lid and scooped bins. Drawer will fit the Slide Racks shown on Page A2

Shipping Weight:
2.95 kg (6.5 lbs.)

Machine Key Width	Spaenaur No.	Compatible Shaft Diameter	Qty.
1.5mm	132-001	4mm - 6mm	20
2.0mm	132-002	6mm - 8mm	
	132-003		
2.5mm	132-005	8mm - 10mm	15
3.0mm	132-006		
	132-007		
	132-008		
4.0mm	132-009	10mm - 12mm	
	132-010		
5.0mm	132-011	12mm - 17mm	10
	132-012		
	132-014		
6.0mm	132-015	17mm - 22mm	
	132-016		
	132-017		
	132-018		
8.0mm	132-019	22mm - 30mm	5
	132-020		
	132-021		
10.0mm	132-022	29mm - 38mm	
	132-023		

PLASTIKIT 804-070

METRIC
DIN 6888

WOODRUFF KEYS
Carbon Steel, Not Plated

11 SIZES
110 PIECES

Size: 1" x 2-3/4" x 4-1/2"



Spaenaur No.	Width	Compatible Shaft Diameter	Height	Length	Qty.
132-006	3mm	8mm - 10mm	3.7mm	9.66mm	10
132-007			5.0mm	12.65mm	
132-008			6.5mm	15.72mm	
132-009	4mm	10mm - 12mm	5.0mm	12.65mm	
132-010			6.5mm	15.72mm	
132-011	5mm	12mm - 17mm	7.5mm	18.57mm	
132-012			6.5mm	15.72mm	
132-014			9.0mm	21.63mm	
132-015	6mm	17mm - 22mm	7.5mm	18.57mm	
132-016			9.0mm	21.63mm	
132-017			10.0mm	24.49mm	