

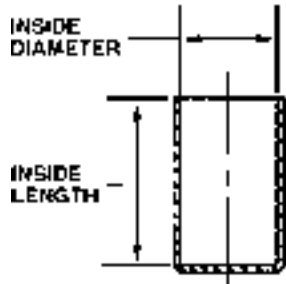
**Tube Caps**

Inch

**Capuchons de tubes**

Pouce

Shallow, medium and long Tube Caps to fit most every size tubing diameter with a snug friction fit. Closures are primarily used to cap fittings, threaded studs, machined parts and tubes used in packaging drill bits and other tools.



**Material:**

Low Density  
POLYETHYLENE



**Tube Caps**

Colour: Orange

SPAENAU No.	INSIDE DIA.	INSIDE LENGTH	PKG QTY.
317-001	3/32"	5/8"	250
317-002	1/8"	5/8"	250
317-003	1/8"	3/4"	250
317-006	3/16"	5/8"	250
317-007	13/64"	5/8"	200
317-010	1/4"	7/8"	200
317-012	5/16"	7/8"	100
317-013	3/8"	7/8"	100
317-015	1/2"	7/8"	100
317-016	9/16"	7/8"	100
317-018	5/8"	7/8"	100
*317-019	5/8"	7/8"	100
317-020	5/8"	15/16"	100
317-021	11/16"	7/8"	100
317-022	3/4"	7/8"	100
317-023	3/4"	15/16"	100
317-024	13/16"	11/16"	100
317-025	13/16"	7/8"	100
■ 317-026	7/8"	5/8"	100
317-027	7/8"	5/8"	100
317-028	7/8"	7/8"	100
317-029	29/32"	3/4"	100
317-030	29/32"	7/8"	100
317-031	1"	3/4"	50
317-104	1"	1"	10

\* 3 Internal Rings

■ .067" Wall Thickness

Colour: Red

SPAENAU No.	INSIDE DIA.	INSIDE LENGTH	PKG QTY.
317-W25-1C	5/32"	19/32"	250
317-W16-1K	7/16"	7/8"	100
317-W23-1P	9/16"	5/8"	100
317-W38-1N	1-1/8"	7/8"	50

For a reference chart on plastics properties see page R20.

See Page J28 for RIBBED Style, also "LONG" Tube Caps

Continued on page J27.

J

Inch

**Tube Caps**

Pouce

Capuchons de tubes

**Tube Caps** Continued from Page J26

SPAENAUR No.	INSIDE DIAMETER	INSIDE LENGTH	PKG QTY.
317-033	1-1/4"	1"	25
317-034	1-3/8"	5/8"	25
317-035	1-3/8"	7/8"	25
317-036	1-1/2"	1"	25
317-037	1-5/8"	1"	25
317-038	1-23/32"	1"	25
■ 317-039	1-3/4"	7/8"	25
317-040	1-3/4"	7/8"	25
317-042	2"	1"	25
317-043	2-1/8"	7/8"	25
317-044	2-1/4"	7/8"	20
317-045	2-1/4"	1"	20
317-046	2-1/2"	7/8"	20
317-047	2-19/32"	1"	20
317-048	2-5/8"	1"	20
▲ 317-W02-1N	2-3/4"	1"	20
317-050	3"	1"	20
317-051	3-1/8"	1-3/8"	20
317-052	3-1/4"	1"	20
317-053	3-7/16"	1"	20
317-054	3-1/2"	1"	10
317-055	4"	1-1/8"	10
317-058	4-13/16"	41/64"	10
317-059	4-7/8"	59/64"	10

■ .085" Wall Thickness

**Colour:**

Orange  
▲ Red

**Material:**

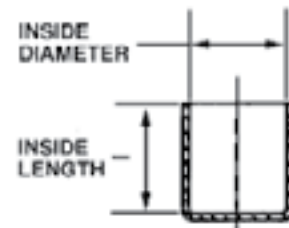
Low Density  
POLYETHYLENE



**Shallow Tube Caps**

**Colour:** Orange

SPAENAUR No.	INSIDE DIAMETER	INSIDE LENGTH	PKG QTY.
317-064	3/16"	15/32"	100
317-067	3/8"	15/32"	100
317-068	7/16"	7/32"	100
317-069	7/16"	1/2"	100
317-071	9/16"	3/32"	100
317-076	1-1/4"	1/2"	50
317-077	1-3/8"	11/32"	50
317-079	2-1/8"	1/2"	25
317-080	2-5/32"	15/32"	25



**Colour:** Red

317-W32-1M	1/4"	1/2"	100
317-W17-1W	5/16"	3/8"	100
317-W29-1W	1/2"	1/2"	100
317-W12-1Y	1"	5/8"	50

**See also our  
Ribbed Tube Caps  
(Page J28)  
for added ease  
of application.**

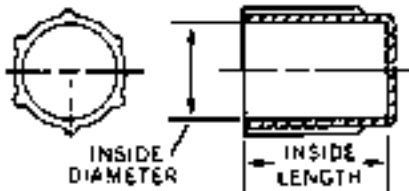
Continued on next page...

**Tube Caps**

Inch

Capuchons de tubes

Pouce



Continued from  
Pages J26 and J27.

**Ribbed Tube Caps**

Colour: Orange

SPAENAUR No.	INSIDE DIAMETER	INSIDE LENGTH	PKG QTY.
317-083	3/8"	3/4"	100
317-084	7/16"	3/8"	100
317-085	7/16"	5/8"	100
317-086	15/32"	3/4"	100
317-087	1/2"	7/16"	100
317-088	9/16"	27/64"	100
317-089	9/16"	3/4"	100

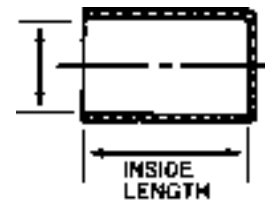
**Material:**  
Low Density  
POLYETHYLENE

**Long Tube Caps**

Colour: Orange

SPAENAUR No.	INSIDE DIAMETER	INSIDE LENGTH	PKG QTY.
*317-099	5/8"	2-1/2"	20
317-100	3/4"	2-15/32"	10
317-101	7/8"	1-3/4"	10
317-102	7/8"	2"	10
317-107	1-1/16"	1"	10
317-110	1-1/4"	1-3/4"	10
317-111	1-3/8"	1-1/2"	10
317-112	1-3/8"	1-19/32"	10
317-113	1-1/2"	1-3/4"	5
317-115	1-27/32"	1-7/32"	5
317-116	2"	1-1/2"	5

**Material:**  
Low Density  
POLYETHYLENE



\*Yellow

Colour: Red

SPAENAUR No.	INSIDE DIAMETER	INSIDE LENGTH	PKG QTY.
317-W40-1N	3/8"	1-1/8"	50
317-W31-1W	27/64"	1-1/4"	50
317-W24-1Y	5/8"	1-1/2"	25
317-W58-1A	1"	1-3/4"	10
317-W27-1T	1-1/4"	1-1/2"	10
317-W49-1C	1-5/8"	1-1/4"	5

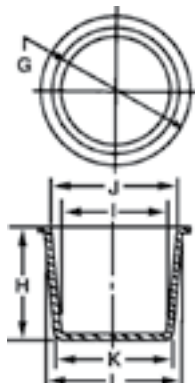
Inch and Metric

Dual Purpose Hole Plugs/Tube Caps

Pouce et Métrique

Bouchons / Capuchons de tubes

Tapered and flexible to install easily, remove easily, for a snug fit as either a cap or plug. Perfect for easy access locations to protect threads and keep dirt and moisture out of pipes, castings, valves, tubes, most everything...an ideal paint mask.



Colour:  
Orange

Material:  
Low Density  
POLYETHYLENE



Tapered Caps & Plugs

SPAENAUR No.	N.P.T. SIZES		STANDARD THREAD SIZES		METRIC THREAD SIZES		DIMENSIONS						PKG QTY.
	CAP	PLUG	PLUG	CAP	CAP	PLUG	G	H	I	J	K	L	
317-117			10-32		M2	M5	5/16"	13/32"	.052"	.117"	.116"	.181"	100
317-118			1/4"		M2.5 M3 M3.5	M6	3/8"	13/32"	.110"	.177"	.174"	.241"	100
317-119					M4		29/64"	11/32"	.146"	.211"	.210"	.275"	100
317-120					M4.5	M7	3/8"	11/32"	.150"	.210"	.209"	.269"	100
317-121			5/16"		M5	M8 M8 x 1	15/32"	3/8"	.175"	.239"	.239"	.303"	100
317-122					M6		15/32"	13/32"	.205"	.273"	.267"	.335"	100
317-123			3/8"	5/16"		M10 M10 x 1.25	1/2"	13/32"	.235"	.303"	.299"	.367"	100
317-124		1/8"			M7		9/16"	3/8"	.267"	.333"	.331"	.397"	100
317-125			7/16"		M8 M8 x 1	M12	9/16"	13/32"	.298"	.364"	.362"	.428"	100
317-127				3/8"	M10 M10 x 1.25	M12 x 1.25	19/32"	13/32"	.328"	.395"	.392"	.459"	100
317-128	1/8"	1/4"	1/2"		M14		5/8"	13/32"	.358"	.422"	.422"	.486"	100
317-129				7/16"		M14 x 1.5	21/32"	13/32"	.384"	.448"	.448"	.512"	100
▲ 317-W13-1C			9/16"	1/2"			11/16"	5/16"	.415"	.485"	.477"	.547"	100
317-131			9/16"	1/2"	M12 M12 x 1.25	M16	11/16"	15/32"	.408"	.484"	.472"	.548"	100
317-132							23/32"	15/32"	.436"	.504"	.500"	.568"	100
317-134							3/4"	11/32"	.490"	.550"	.552"	.612"	100
317-135	1/4"		5/8"				3/4"	15/32"	.469"	.544"	.533"	.608"	100
317-136		3/8"		9/16"	M14 M14 x 1.5	M18	25/32"	1/2"	.487"	.569"	.551"	.633"	100
317-137				5/8"		M18 x 1.5	27/32"	17/32"	.518"	.606"	.590"	.674"	100
317-138							27/32"	17/32"	.549"	.634"	.610"	.695"	100
▲ 317-W46-1A			3/4"		M16 M16 x 1.5	M20	7/8"	1/2"	.578"	.665"	.642"	.729"	100
317-141	3/8"					M20 x 1.5	7/8"	17/32"	.614"	.691"	.678"	.755"	100
317-143		1/2"				M22	15/16"	19/32"	.627"	.723"	.691"	.787"	100
▲ 317-W50-1Y							55/64"	3/16"	.688"	.743"	.750"	.805"	100

▲ Red

For **CAP** applications, the "I" dimension should be at least .020" **less** than diameter to be capped.  
For **PLUG** applications, the "L" dimension should be at least .020" **larger** than the opening.

Continued on page J30.

Dual Purpose Hole Plugs/Tube Caps

Inch and Metric

Bouchons / Capuchons de tubes

Pouce et Métrique

Continued from Previous page

Colour: Orange

Material: Low Density POLYETHYLENE

SPAENAUR No.	N.P.T. SIZES		STANDARD THREAD SIZES		METRIC THREAD SIZES		DIMENSIONS						PKG QTY.
	CAP	PLUG	PLUG	CAP	CAP	PLUG	G	H	I	J	K	L	
317-145				3/4"		M22 x 1.5	1"	19/32"	.663"	.761"	.727"	.825"	100
317-146			7/8"		M18 M18 x 1.5	M24	1"	19/32"	.668"	.785"	.752"	.849"	100
317-147	1/2"		15/16"			M24 x 2	1-1/16"	21/32"	.739"	.848"	.803"	.912"	100
317-148			1"	7/8"	M20 M20 x 1.5		1-1/8"	5/8"	.755"	.869"	.819"	.933"	100
▲317-W48-1Y		3/4"					1-1/8"	21/32"	.790"	.894"	.854"	.958"	50
317-150		3/4"				M27	1-1/8"	3/4"	.805"	.909"	.869"	.973"	50
317-151		3/4"					1-1/8"	21/32"	.805"	.909"	.869"	.973"	50
317-152							1-5/32"	1/2"	.878"	.971"	.942"	1.035"	50
317-153			1-1/16"		M22 M22 x 1.5	M27 x 2	1-5/32"	23/32"	.855"	.980"	.915"	1.040"	50
317-155							1-5/16"	7/8"	.940"	.960"	1.020"	1.040"	50
317-156							1-1/4"	1/2"	.918"	.985"	.980"	1.049"	50
317-157							1-1/4"	1-1/32"	.890"	1.030"	.950"	1.090"	50
317-158	3/4"				M24 M24 x 2	M30	1-9/32"	3/4"	.903"	1.028"	.967"	1.092"	50
317-159				1-1/16"		M30 x 2	1-5/16"	25/32"	.933"	1.080"	.997"	1.144"	50
317-160		1"	1-1/4"		M27 M27 x 2	M33	1-13/32"	25/32"	1.029"	1.155"	1.093"	1.219"	50
317-161							1-7/16"	21/32"	1.116"	1.223"	1.180"	1.280"	50
317-162			1-5/16"			M33 x 2 M36	1-7/16"	3/4"	1.115"	1.222"	1.179"	1.286"	50
▲317-W26-1N							1-3/8"	9/16"	1.155"	1.190"	1.276"	1.312"	50
317-164					M30 M30 x 2		1-1/2"	3/4"	1.162"	1.290"	1.226"	1.354"	50
317-165	1"			1-5/16"			1-1/2"	27/32"	1.175"	1.300"	1.233"	1.358"	50
317-166						M36 x 3	1-1/2"	3/4"	1.228"	1.292"	1.292"	1.356"	50
317-168			1-1/2"				1-5/8"	17/32"	1.286"	1.401"	1.350"	1.465"	50
317-169							1-5/8"	3/4"	1.248"	1.401"	1.312"	1.465"	50
317-170					M33 M33 x 2	M39 M39 x 3	1-3/4"	51/64"	1.340"	1.420"	1.435"	1.500"	50
317-171							1-49/64"	15/16"	1.282"	1.450"	1.344"	1.507"	50
317-172			1-9/16"				1-3/4"	7/8"	1.384"	1.537"	1.447"	1.600"	50
317-173		1-1/4"					1-3/4"	3/4"	1.387"	1.537"	1.451"	1.601"	50
317-174			1-5/8"		M36 M36 x 3		1-25/32"	3/4"	1.455"	1.538"	1.519"	1.602"	50
317-175	1-1/4"			1-5/8"			1-7/8"	25/32"	1.498"	1.620"	1.560"	1.682"	50
317-176	1-1/4"			1-5/8"	M39 M39 x 3		1-7/8"	5/8"	1.514"	1.628"	1.574"	1.688"	50
317-177							1-15/16"	3/4"	1.569"	1.686"	1.633"	1.750"	50
317-178		1-1/2"	1-7/8"				2"	25/32"	1.688"	1.818"	1.752"	1.882"	25
*317-179	1-1/2"			1-7/8"			2-5/32"	1"	1.743"	1.874"	1.807"	1.938"	25
*317-180							2-3/8"	43/64"	1.785"	1.895"	1.865"	1.975"	25
*317-181							2-1/8"	1"	1.783"	1.936"	1.847"	2.000"	25
▲*317-W09-1P							2-13/64"	3/4"	1.885"	2.000"	1.950"	2.065"	25
*317-184							2-1/4"	1"	1.839"	2.014"	1.903"	2.078"	25
*317-185							2-1/4"	1"	1.917"	2.069"	1.981"	2.133"	25
▲*317-W11-1W							2-19/32"	3/8"	2.036"	2.076"	2.100"	2.140"	25
*317-187							2-5/16"	3/4"	1.953"	2.083"	2.017"	2.147"	25
*317-188			2-1/4"				2-7/16"	1-1/32"	2.000"	2.174"	2.070"	2.244"	25
*317-189				2-1/4"			2-19/32"	1"	2.093"	2.265"	2.157"	2.329"	25
▲*317-W08-1A							2-51/64"	3/4"	2.216"	2.336"	2.280"	2.400"	25
*317-191							2-17/32"	1"	2.065"	2.344"	2.129"	2.408"	25
*317-192	2"						2-5/8"	1"	2.236"	2.400"	2.300"	2.464"	25

▲Red \*For Pull-Plug only, see page J32-J33.

For CAP applications, the "I" dimension should be at least .020" less than diameter to be capped.  
For PLUG applications, the "L" dimension should be at least .020" larger than the opening.

Continued on next page.

Inch

Dual Purpose Hole Plugs/Tube Caps

Pouce

Bouchons / Capuchons de tubes

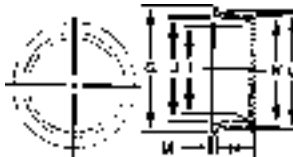
Continued from pages J29 & J30	SPAENAUR No.	N.P.T. SIZES		STANDARD THREAD SIZES		DIMENSIONS						PKG QTY.
		CAP	PLUG	PLUG	CAP	G	H	I	J	K	L	
▲317-W14-1N						2-21/32"	3/4"	2.220"	2.383"	2.300"	2.464"	10
317-194					2-1/2"	2-13/16"	1-5/32"	2.332"	2.540"	2.396"	2.604"	10
317-195						2-25/32"	3/4"	2.418"	2.581"	2.482"	2.645"	10
317-196						2-25/32"	1"	2.247"	2.586"	2.311"	2.650"	10
317-197						2-7/8"	3/4"	2.497"	2.626"	2.561"	2.690"	10
317-198						2-7/8"	1"	2.393"	2.686"	2.457"	2.750"	10
317-199			2-1/2"			2-31/32"	25/32"	2.579"	2.727"	2.643"	2.791"	10

▲Red

FOR COMPLETE LISTING OF PLASTIC ITEMS IN THIS SECTION

SEE PAGES J26 to J41.

Extra Large Tapered Caps & Plugs



Colour: Orange

Material: Low Density POLYETHYLENE

SPAENAUR No.	N.P.T. SIZES		DIMENSIONS							PKG QTY.
	CAP	PLUG	G	H	I	J	K	L	M	
317-200			3-1/16"	23/32"	2.626"	2.790"	2.706"	2.870"	.040"	10
317-201			3-1/4"	3/4"	2.786"	2.918"	2.850"	2.982"	.030"	10
317-202	2-1/2"		3-1/8"	1"	2.656"	2.926"	2.720"	2.990"	.032"	10
317-203			3-13/32"	15/32"	2.916"	3.079"	2.996"	3.159"	.045"	10
317-204			3-7/16"	23/32"	2.920"	3.120"	3.000"	3.200"	.035"	10
317-205			3-3/8"	1"	2.910"	3.174"	2.980"	3.244"	.035"	10
317-206			3-1/2"	1"	3.018"	3.297"	3.088"	3.367"	.035"	10
317-207		3"	3-5/8"	3/4"	3.250"	3.382"	3.320"	3.452"	.035"	10
317-208	3"		3-11/16"	1-1/8"	3.200"	3.492"	3.270"	3.562"	.035"	10
317-209			3-7/8"	3/4"	3.406"	3.542"	3.466"	3.602"	.045"	10
317-210			4"	3/4"	3.596"	3.722"	3.676"	3.802"	.040"	10
317-211	3-1/2"	3-1/2"	4-1/8"	3/4"	3.710"	3.840"	3.790"	3.920"	.040"	10
317-212			4-3/8"	3/4"	3.848"	3.994"	3.928"	4.074"	.040"	10
317-213			4-17/32"	3/4"	3.940"	4.060"	4.020"	4.140"	.040"	10
317-214		4"	4-15/16"	15/16"	4.134"	4.379"	4.214"	4.459"	.060"	10
317-215	4"		5"	1"	4.288"	4.502"	4.368"	4.622"	.060"	10
317-216			5-1/4"	7/8"	4.568"	4.782"	4.638"	4.852"	.060"	10
317-217			5-7/16"	11/16"	4.900"	5.020"	4.980"	5.100"	.060"	10
317-218		5"	5-7/8"	7/8"	5.206"	5.374"	5.326"	5.494"	.065"	10
317-219	5"		6-1/8"	1"	5.386"	5.544"	5.466"	5.624"	.040"	10
317-220			6-1/4"	1"	5.606"	5.794"	5.696"	5.874"	.065"	5
317-221			6-5/8"	1"	5.918"	6.094"	6.008"	6.184"	.045"	5
317-222	6"	6"	6-15/16"	7/8"	6.328"	6.494"	6.398"	6.564"	.065"	5
317-223			7-3/16"	1-1/2"	6.528"	6.634"	6.668"	6.774"	.065"	5
317-224			7-5/8"	1"	6.968"	7.044"	7.048"	7.124"	.065"	5
317-225			7-15/16"	1"	7.254"	7.580"	7.338"	7.656"	.065"	5
317-226			8-1/8"	1"	7.574"	7.762"	7.658"	7.846"	.070"	5
317-227			8-3/8"	1"	7.874"	8.052"	7.968"	8.146"	.070"	5
317-228			9-1/8"	1-1/2"	8.534"	8.602"	8.668"	8.736"	.070"	5

CATALOG 14

SPAENAUR