

Inch

**Automotive Flat Shims**

Pouce

**Cales plates pour automobiles**

**Steel - Zinc Plated**

Illustration	SPAENAUR No.	Thickness	PKG QTY.	Description and Application
	W-134SH	1/8"	25	<p><i>BALL-JOINT SHIMS</i> For Oldsmobile 1957-'73</p>
	<p>W-300SH W-138SH W-140SH</p>	<p>1/64" 1/32" 1/8"</p>	<p>25 25 25</p>	<p><i>BALL-JOINT SHIMS</i> For Ford, Meteor 1957-'73 Checker 1957-'73</p>
	<p>602-A02-1Y 602-A03-1C W-8SH W-9SH</p>	<p>1/64" 1/32" 1/16" 1/8"</p>	<p>50 50 50 50</p>	<p><i>BALL-JOINT SHIMS</i> For Ford Products Cars 1954-'79 and Universal use</p>
	<p>*W-182SH W-184SH</p>	<p>1/32" 1/8"</p>	<p>25 25</p>	<p><i>UNIVERSAL BODY SHIMS</i> For ALL Cars * Slot Depth .850" ± .015625"</p>

**D**

CATALOG 14 SPAENAUR

Continues on Next Page

**Automotive Flat Shims**

Inch

Cales plates pour automobiles

Pouce

**Steel - Zinc Plated**

**D**

Illustration	SPAENAUR No.	Thickness	PKG QTY.	Description and Application
	<b>602-431</b> <b>W-164SH</b>	1/16" 1/8"	25 50	<i>BODY SHIM</i> <i>General Purpose</i>
	<b>B-1360</b>	.080"	50	<i>ALL PURPOSE SHIM</i>
	<b>W-301SH</b> <b>W-302SH</b> <b>W-303SH</b> <b>W-304SH</b>	1/64" 1/32" 1/16" 1/8"	50 50 50 25	<i>BALL-JOINT SHIMS</i> <i>Mustang 1965 - 1966</i>
	<b>602-412</b> <b>602-413</b> <b>602-414</b>	1/32" 1/16" 1/8"	25 25 25	<i>BALL-JOINT SHIMS</i> <i>Chevrolet 1971-'79</i>
	<b>W-148</b> <b>602-A04-1N</b> <b>602-A01-1P</b>	1/32" 1/16" 1/8"	100 100 100	<i>WASHER SHIM</i> <i>All Purpose Universal All cars</i> <i>1963-79</i>

Continues on Next Page

SPAENAUR CATALOG 14

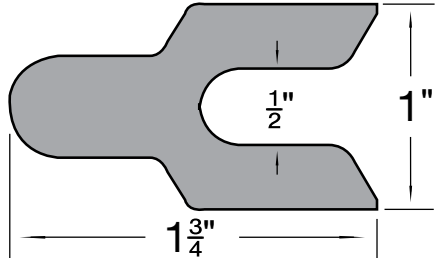
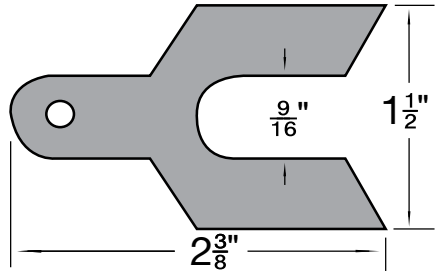
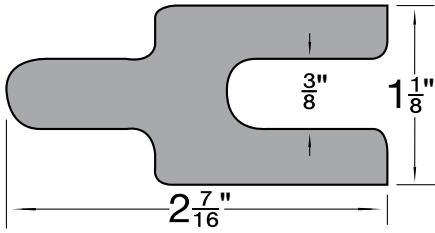
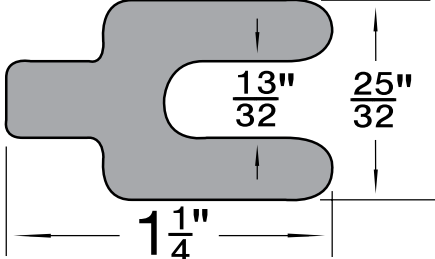
Inch

**Automotive Flat Shims**

Pouce

**Cales plates pour automobiles**

**Steel - Zinc Plated**

Illustration	SPAENAUR No.	Thickness	PKG QTY.	Description and Application
	<p><b>602-396</b> <b>602-397</b> <b>602-398</b></p>	<p>1/32" 1/16" 1/8"</p>	<p>25 25 25</p>	<p><i>BALL-JOINT SHIMS</i> <i>Chev. &amp; Chevelle Com.</i> <i>1971-1979</i></p>
	<p><b>602-399</b> <b>602-411</b></p>	<p>1/32" 1/8"</p>	<p>25 25</p>	<p><i>BALL-JOINT SHIMS</i> <i>Chev. &amp; GMC Heavy Trucks</i> <i>1963-1973</i></p>
	<p><b>602-415</b> <b>602-416</b></p>	<p>1/16" 1/8"</p>	<p>25 25</p>	<p><i>FENDER TAB SHIMS</i> <i>Buick 1965-1973</i></p>
	<p><b>602-428</b> <b>602-417</b></p>	<p>1/32" 1/16"</p>	<p>50 50</p>	<p><i>SHIMS</i> <i>Fiat &amp; Small Foreign Cars</i> <i>1970-1979</i></p>

**D**

CATALOG 14  
SPAENAUR

Continues on Next Page

**Automotive Flat Shims**

Inch

**Cales plates pour automobiles**

Pouce

Continued from Previous Page

**Steel - Zinc Plated**

Illustration	SPAENAUR No.	Thickness	PKG QTY.	Description and Application
	<p><b>602-429</b>  <b>W-14SH</b>  <b>*W-15SH</b>  <b>W-17SH</b></p>	<p>1/64"                      1/32"                      1/16"                      3/16"</p>	<p>25                      50                      50                      25</p>	<p><i>CASTER-CAMBER SHIMS</i>                      For Chevrolet, Pontiac 1955-1970                      Corvair '60-62</p> <p>*dashed line on drawing is the cut out for this part number.</p>
	<p><b>W-135SH</b>  <b>W-136SH</b>  <b>W-192SH</b></p>	<p>.060"                      .080"                      .164"</p>	<p>25                      25                      25</p>	<p><i>BALL-JOINT SHIMS</i>                      For Buick, Pontiac 1957-1973</p>
	<p><b>602-430</b></p>	<p>1/64"</p>	<p>25</p>	<p><i>UNIVERSAL BALL-JOINT SHIMS</i>                      Fit all bolt sizes</p>
	<p><b>W-217SH</b>  <b>W-218SH</b>  <b>W-219SH</b></p>	<p>1/32"                      1/16"                      1/8"</p>	<p>25                      25                      25</p>	<p><i>CASTER-CAMBER SHIMS</i>                      Corvair 1961 - 1968</p>
	<p><b>602-424</b></p>	<p>1/64"</p>	<p><i>REAR SUSPENSION SHIM</i>                      GM Cars 1963-1979</p> <p>Continues on Next Page</p>	

D

**D84**

Inch

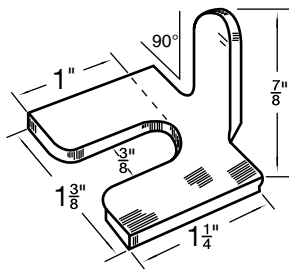
## Automotive Flat Shims / Beveled Washers

Pouce

Cales plates pour automobile / Rondelles biseautées

### BODY SHIM STEEL—Zinc Plated

SPAENAUR No.	Thickness
602-422	1/16"
602-423	1/8"



Shim, Body at Hinge to Fender Reinforcement, Lower Fender Reinforcement to Body.

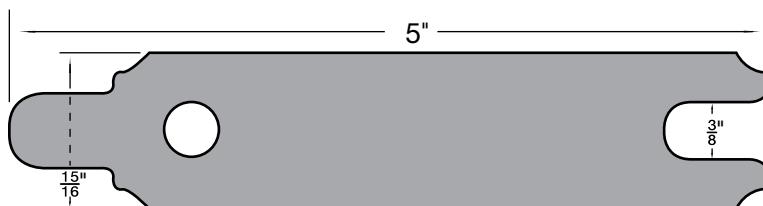
Chevrolet, Oldsmobile, Buick, Pontiac — 1977-1979.

PKG QTY. 25

### ALIGNING SHIMS FOR STARTERS

CHEVROLET, OLDSMOBILE, BUICK, PONTIAC  
ALL G.M. CARS 1970-1979

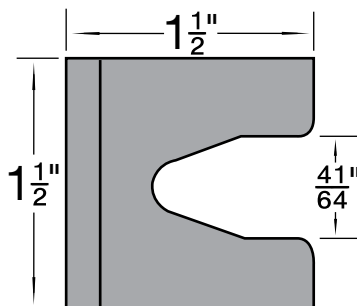
STEEL Zinc Plated	SPAENAUR No.	Thickness
PKG QTY. 25	602-419	1/64"
	602-420	1/32"
	602-421	1/16"



UNIVERSAL  
"BREAK-OFF" SHIM

SPAENAUR No.  
W-321SH

.065" Thick



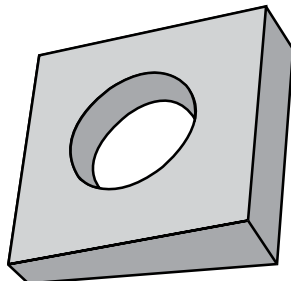
FOR ALL BOLT SIZES—  
3/8", 7/16", 1/2", 9/16", 5/8" and 21/32"

Break-Off Feature For Added Application  
in Hard-To-Shim Areas.

PKG QTY. 50

### MALLEABLE IRON BEVELED WASHERS

16-2/3% Slope

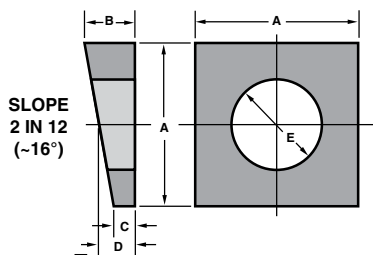


Plain Finish

SPAENAUR No.	Bolt Dia.	Across Flats (Square)	Thickness at Large End	Thickness at Taper	Hole Dia.	PKG QTY.
635-001	1/4"	11/16"	7/32"	5/64"	5/16"	50
W-289	3/8"	1-1/4"	11/32"	5/32"	7/16"	50
W-290	1/2"	1-1/4"	11/32"	5/32"	9/16"	50
635-A01-1K	5/8"	1-1/2"	13/32"	5/32"	11/16"	25
W-292	3/4"	1-1/2"	13/32"	5/32"	13/16"	25
W-293	7/8"	2"	1/2"	7/32"	15/16"	10
W-294	1"	2"	9/16"	7/32"	1-3/32"	10

### ALUMINUM (Alloy 319) BEVELED WASHERS

TYPE A - Plain Finish



SPAENAUR No.	BOLT DIA.	A	B	C	D	HOLE DIA. E	PKG QTY.
635-300	1/4"	0.69"	0.22"	0.09"	0.16"	0.31"	100
635-301	5/16"	1.00"	0.31"	0.16"	0.23"	0.38"	100
635-302	3/8"	1.25"	0.34"	0.12"	0.23"	0.44"	50
635-303	1/2"	1.25"	0.34"	0.12"	0.23"	0.56"	50
635-304	5/8"	1.50"	0.38"	0.12"	0.25"	0.69"	25
635-305	3/4"	1.50"	0.44"	0.19"	0.31"	0.81"	25

CATALOG 14

SPAENAUR