

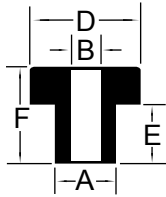
# Sleeved Bushings - PVC / Rubber

Inch

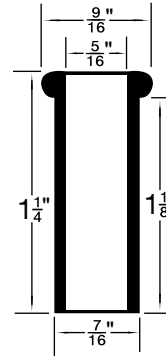
## Manchons - PVC / caoutchouc

Pouce

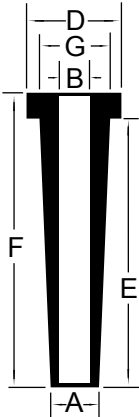
**Material:** P.V.C. (Polyvinyl Chloride) Plastic *All Dimensions shown in Inches.*  
**Hardness:** 55 Durometer  
**Colour:** All items furnished in BLACK, unless otherwise shown.



SPAENAUR No.	A	B	D	E	F
315-596	1/4	3/16	1/2	3/8	7/16
315-604	5/16	3/16	9/16	5/16	1/2
315-621	5/8	15/64	13/16	9/32	13/32
315-622	21/32	7/16	1	5/16	7/16

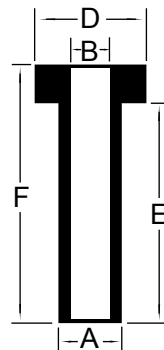


SPAENAUR No. 315-615



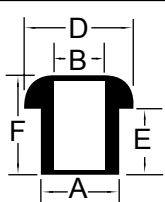
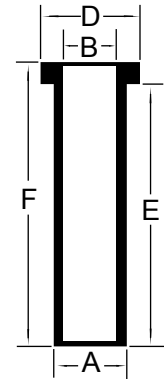
SPAENAUR No.	A	B	D	E	F	G
315-598	3/16	1/8	7/16	1-1/4	1-5/16	1/4
315-G16-1M	3/16	5/32	3/8	7/8	1.0	9/32
*315-600	3/16	5/32	3/8	7/8	1.0	9/32
■ 315-601	3/16	5/32	3/8	7/8	1.0	9/32
315-602	7/32	5/32	13/32	1-17/32	1-5/8	19/64
315-606	1/4	3/32	1/2	9/16	5/8	5/16
315-G64-1K	1/4	5/32	1/2	1-3/8	1-1/2	3/8
*315-610	1/4	5/32	1/2	1-7/16	1-9/16	3/8

\*Grey  
 ■ White



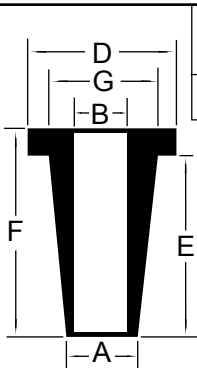
SPAENAUR No.	A	B	D	E	F
315-H37-1A	5/16	3/16	37/64	1-11/32	1-15/32
315-611	3/8	1/4	5/8	19/32	25/32
315-620	5/8	1/2	13/16	7/8	15/16

Plastic Sleeves  
 PKG QTY. 100



SPAENAUR No.	A	B	D	E	F
315-608	3/8	3/16	9/16	11/32	1/2
315-618	1/2	13/32	11/16	1/4	5/16

SPAENAUR No.	A	B	D	E	F
315-612	3/8	9/32	1/2	1-3/8	1-15/32
315-616	7/16	5/16	9/16	1-15/32	1-9/16

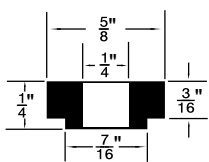
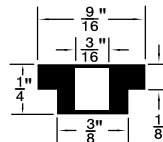


SPAENAUR No.	A	B	D	E	F	G
315-617	11/32	3/16	19/32	1-11/32	1-15/32	15/32

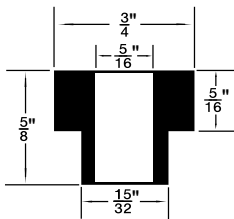
### RUBBER BUSHINGS

PKG QTY. 25

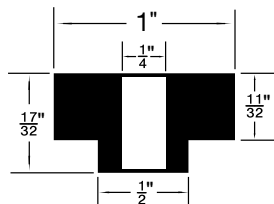
SPAENAUR No. 315-G43-1X



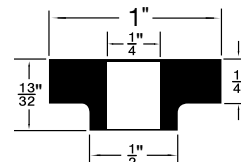
SPAENAUR No. RB-47



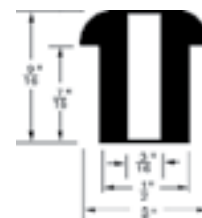
SPAENAUR No. RB-48



SPAENAUR No. RB-49



SPAENAUR No. RB-74



SPAENAUR No. 315-252

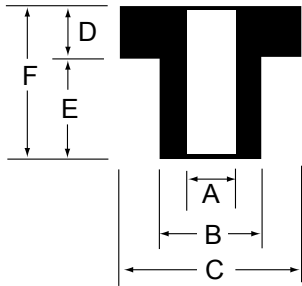
Hardness: 50 Durometer (approximately). Material: SBR, Black.

Inch

**Sleeved Bushings - SBR / Snap Bushings Assortment**

Pouce

**Manchons – SBR / Assortiment de manchons à enclenchement rapide**



**FLANGE  
PLAIN BORE**

**Material: SBR**

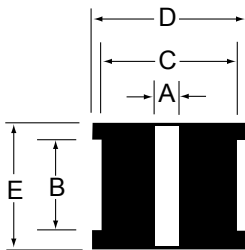
**Hardness: 60 Durometer ±5.**

**Colour: Black**

SPAENAUR No.	A Inside Dia.	B Stem Dia.	C Flange Dia.	D Flange Height	E Stem Height	F Total Height
315-G31-1X	1/8"	1/4"	3/8"	7/64"	17/64"	3/8"
315-281	11/64"	9/32"	1/2"	3/32"	7/64"	13/64"
315-303	1/4"	13/32"	5/8"	3/32"	5/16"	13/32"
*315-268	5/16"	1/2"	3/4"	1/8"	9/32"	13/32"
■315-254	5/16"	5/8"	1"	1/4"	11/32"	19/32"

\*Rounded edge ■Buna N, 50 Durometer

**PKG QTY. 25**



**PLAIN BORE  
SQUARE SHOULDERS**

SPAENAUR No.	A Bore Dia.	B Groove Width	C Groove Dia.	D Outside Dia.	E Overall Thickness
315-260	5/16"	3/8"	3/8"	9/16"	1/2"
315-265	3/8"	1/8"	1/2"	5/8"	13/32"

**PKG QTY. 25**

**ASSORTMENT 805-626**

**Nylon Hole & Vent Plugs  
BLACK NYLON  
SNAP BUSHINGS**

**32 SIZES - 693 PIECES**

Large Size Grey Enamelled Drawer fits the Slide Racks shown on Page A3

Shipping weight **4.5 kg** (10 lbs.)



Mounting Hole Diameter	Spaenaur No.	Inner Diameter	Flange Diameter	Overall Height	Qty.	Page
0.250"	315-700	1/8"	5/16"	5/16"	50	J58
0.312"	315-701	3/16"	3/8"			
0.375"	315-703	1/4"	15/32"	13/32"	40	
0.437"	315-706	5/16"	17/32"			
0.500"	315-708	3/8"	37/64"	13/32"	30	
	315-709					
0.562"	315-711	7/16"	21/32"	13/32"	25	
	315-713					
0.625"	315-714	1/4"	23/32"	13/32"	25	
	315-715	7/16"				
	315-G06-1A	1/2"				
0.687"	315-720	9/16"	25/32"	13/32"	25	
0.750"	315-722	1/2"	27/32"			
	315-724	39/64"	27/32"			
0.812"	315-726	9/16"	57/64"	13/32"	20	
	315-730	1/2"	61/64"			
0.875"	315-731	9/16"		61/64"	13/32"	
	315-732	5/8"				
1.000"	315-734	3/4"	1-1/8"	13/32"	15	
	315-735	13/16"	1-7/32"			
1.093"	315-736	7/8"		1-7/32"	13/32"	
	315-737					
1.187"	315-739	15/16"	1-5/16"	13/32"	10	
1.250"	315-740		1-23/64"			
1.375"	315-742	1"	1-15/32"	13/32"	10	
	315-744	1-1/16"	1-39/64"			
1.500"	315-745	1-1/8"		1-39/64"	13/32"	10
	315-746	1-5/16"				
1.750"	315-748	1-3/8"	1-7/8"	13/32"	5	
	315-749		2-1/8"			
2.000"	315-783	1-5/8"		2-1/8"	13/32"	3
	315-750	1-31/32"	2-21/32"			