

Inch

Clevis Pins

Pouce

Axes de chape

C-1008/C-1018 Grade
STEEL
 Case **HARDENED**
 Finish - Trivalent Zinc or Dichromate (our option)

Cross-drilled & counter-sunk for cotter pin.

See page E43 for COTTER PINS
 See page E81 for CLEVIS YOKES

SAE Standard Sizes

SPAENAUR No.	Diameter D	Length Under Head		Hole Diameter	Use Cotter Pin	PKG QTY.
		B	L			
233-F50-1A	3/16"	0.504"-0.484"	0.580"	.080"	1/16"	100
233-003 (Zinc Chromate)	1/4"	0.692"-0.672"	0.780"	.080"	1/16"	100
233-F18-1K	5/16"	0.832"-0.812"	0.940"	.111"	3/32"	100
233-F13-1P	3/8"	0.958"-0.938"	1.060"	.111"	3/32"	100
233-006 (Zinc Chromate)	7/16"	1.082"-1.062"	1.190"	.111"	3/32"	50
233-F72-1M	1/2"	1.223"-1.203"	1.395"	.143"	1/8"	50
233-F66-1N	5/8"	1.473"-1.453"	1.610"	.143"	1/8"	25
233-F20-1K	3/4"	1.739"-1.719"	1.910"	.174"	5/32"	25

Other Stock Sizes to IFI Standards except for Hole Dia. and point style.

Hole Dia. Tol. on Pins listed below +.010" to -.005"

233-F52-1Y	1/8" -.005	3/8"	7/16"	1/16"	3/64"	100
B-1942 (Zinc Chromate)	3/16"	17/32"	5/8"	3/32"	1/16"	100
233-F16-1N		1-1/16"	1-3/16"			100
233-F08-1M		1-1/2"	1-5/8"			100
233-F63-3P		2-13/32"	2-1/2"			100
B-2036 (Zinc Chromate)	1/4"	13/32"	1/2"	3/32"	1/16"	100
233-F37-1P		3/4"	27/32"			50
233-F39-1C		29/32"	1"			50
233-F24-1A		1"	1-3/32"			50
233-F05-1T		1-5/32"	1-1/4"			50
233-F06-1K		1-9/32"	1-3/8"			50
233-F81-1T		1-13/32"	1-1/2"			50
233-F32-1K		1-17/32"	1-5/8"			50
233-F21-1W		1-5/8"	1-3/4"			50
233-F14-1Y		1-29/32"	2"			50
233-F09-1X	5/16"	13/16"	31/32"	1/8"	3/32"	50
233-F22-1M		7/8"	1"			50
233-F51-1P		15/16"	1-1/16"			50
233-F23-1X		1"	1-1/8"			50
233-F30-1N		1-1/8"	1-1/4"			50
1058 (Zinc Chromate)		1-1/4"	1-3/8"			50
233-F10-1M		1-3/8"	1-1/2"			50
233-F34-1M		1-7/16"	1-9/16"			50
233-F68-1K		1-9/16"	1-11/16"			50
1056 (Zinc Chromate)		1-5/8"	1-3/4"			50
233-F38-1Y		1-3/4"	1-7/8"			50
B-1971 (Zinc Chromate)		2-19/32"	2-3/4"			50

Continues on Next Page

*233-F63-1P Plain Steel

Page A90

ASSORTMENT ASSORTIMENT B-555D

CLEVIS PINS
Steel, Zinc Plated

Grade C-1008 / C-1018 Hardened
32 SIZES - 340 PIECES

Furnished in LARGE SIZE grey enamelled steel drawer with "scooped" bins. Drawer will fit into the Slide Racks shown on page A3
 Shipping weight: **10.88 kg** (24 lbs.)

CATALOG 14

SPAENAUR

Clevis Pins

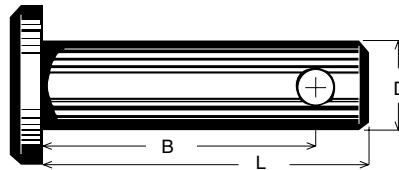
Inch

Axes de chape

Pouce

C-1008/C-1018 Grade

STEEL
Case **HARDENED**



Cross-drilled & counter-sunk for cotter pin.

See page E43 for COTTER PINS

Finish - Trivalent Zinc or Dichromate (our option)

Continued from Previous Page

Other Stock Sizes

Hole Dia. Tol. on Pins listed below +.010" to -.005" • Zinc Chromate

SPAENAUR No.	Diameter D	Length under head B		Hole Diameter	Use Cotter Pin	PKG QTY.
		B	L			
233-F27-1C	3/8"	5/8"	3/4"	5/32"	3/32"	50
•B-371		3/4"	7/8"			50
233-F11-1X		7/8"	1"			50
•B-1722		15/16"	1-3/32"			50
233-F12-1A		1"	1-1/8"			50
233-F69-1W		1-1/8"	1-1/4"			50
233-F28-1N		1-1/4"	1-3/8"			50
•B-375		1-5/16"	1-7/16"			50
•B-376		1-3/8"	1-1/2"			50
233-F77-1C		1-1/2"	1-5/8"			50
•B-377		1-5/8"	1-3/4"			50
233-F02-1Y		1-7/8"	2"			50
•233-022		1-31/32"	2-1/8"			25
233-F53-1C		2-1/8"	2-1/4"			25
233-F03-1C		2-1/4"	2-3/8"			25
233-F26-1Y	2-15/32"	2-5/8"	25			
233-F84-2M	3-1/4"	3-3/8"	25			
•233-021	7/16"	27-32"	1"	5/32"	3/32"	25
•B-381		1"	1-5/32"			25
•B-382		1-1/8"	1-9/32"			25
•1054		1-1/4"	1-13/32"			25
233-F31-1T		1-1/2"	1-21/32"			25
•1055		1-3/4"	1-29/32"			25
•B-1753	1/2"	1-3/32"	1-1/4"	5/32"	1/8"	25
•B-385		1-3/8"	1-17/32"			25
233-F01-1P		1-5/8"	1-25/32"			25
233-F70-1K		2-3/32"	2-1/4"			25
233-F71-1W		2-19/32"	2-3/4"			25
233-F25-1P		3.343"	3-1/2"			25
233-F33-1W	3-27/32"	4"	25			
•B-1802	5/8"	1-11/32"	1-1/2"	5/32"	1/8"	25
233-F04-1N		1-27/32"	2"			25
233-F29-1T		3-11/32"	3-1/2"			25
233-F65-1C		3-3/64"	3-1/4"			10

See our full line of Clevis Hooks and Links starting on Page M59

CATALOG 14

SPAENAUR

Inch

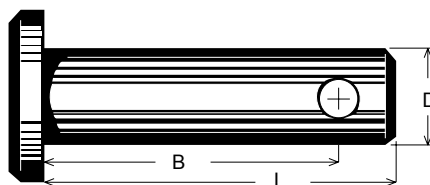
Clevis Pins

Pouce

Axes de chape

**300 Series
STAINLESS
STEEL**

**NOT HARDENED
Plain Finish**



Cross-drilled & counter-sunk for cotter pin.

See page E43
for COTTER PINS

SPAENAUR No.	Nom. Diameter D	Length under head		Hole Diameter	Use Cotter Pin	PKG QTY.
		B	L			
234-002	3/16" (Max. 0.186" Min. 0.181")	13/32"	1/2"	.094"	1/16"	50
234-003		21/32"	3/4"			50
234-D04-1C		1-5/32"	1-1/4"			50
234-005		1-21/32"	1-3/4"			50
234-D01-1A	1/4" (Max. 0.248" Min. 0.243")	13/32"	1/2"	.094"	1/16"	50
234-007		21/32"	3/4"			50
234-008		1-1/32"	1-1/8"			50
234-009		1-17/32"	1-5/8"			50
234-010		1-29/32"	2"			50
234-012	5/16" (Max. 0.311" Min. 0.306")	27/32"	1"	.141"	3/32"	50
234-013		1-3/32"	1-1/4"			50
234-028		1-55/64"	2"			25
234-015		2-11/32"	2-1/2"			50
234-016	3/8" (Max. 0.373" Min. 0.368")	19/32"	3/4"	.156"	3/32"	25
234-D02-1P		27/32"	1"			25
234-D06-1T		1-3/32"	1-1/4"			25
234-019		1-11/32"	1-1/2"			25
234-D03-1Y		1-19/32"	1-3/4"			25
234-021		1-27/32"	2"			10
234-D05-1N	2-11/32"	2-1/2"	10			
234-023	1/2" (Max. 0.496" Min. 0.491")	27/32"	1"	.156"	3/32"	10
234-024		1-11/32"	1-1/2"			10
234-025		1-27/32"	2"			10
234-026		2-11/32"	2-1/2"			10
234-027		2-27/32"	3"			10

CLEVIS PINS

STEEL

Complete with 2 Hair Pin Cotter Clips.

Material: C 1213
Finish: Zinc Plated

SPAENAUR No.	Diameter	Usable Length	Overall Length	PKG QTY.
233-081	1"	2-1/8"	2-7/8"	5
233-082	1"	2-3/4"	3-1/2"	5
233-083	1"	2-7/8"	3-5/8"	5
233-084	1"	3-1/4"	4"	5



TENSILE STRENGTH 78,000 PSI MINIMUM
YEILD 60,000 PSI MINIMUM

Clevis Pins / Dowel Pins

Inch

Axes de chape / Goupilles cylindriques

Pouce

UNIVERSAL CLEVIS PINS

C1018 Steel - Trivalent Zinc Plated (Not Hardened)



*C1010 Steel

PKG QTY. 10

(Number of holes may vary)

SPAENAUR No.	Dia.	Length Under Head	Dia. of Holes
233-F99-1P	1/4"	2"	7/64"
233-F91-1C	5/16"	2"	7/64"
233-F55-2T	3/8"	2"	9/64"
233-F56-2K	7/16"	2"	5/32"
233-F07-1W	7/16"	2-1/2"	5/32"
233-F57-1W	7/16"	3"	5/32"
233-F58-2M	1/2"	2"	5/32"
*233-F96-1M	1/2"	2-1/2"	5/32"
233-F59-1M	1/2"	3"	5/32"
233-F64-2Y	5/8"	3"	5/32"
233-F60-2A	3/4"	3"	5/32"

MISCELLANEOUS CLEVIS PINS

SPAENAUR No. B-1679

C-1008 Hardened STEEL Zinc Plated

Use with Hairpin Cotter on Page E60 No. B-1717



Pin diameter: 1/4"
Effective length: 7/16"



Groove Dia: 3/16"

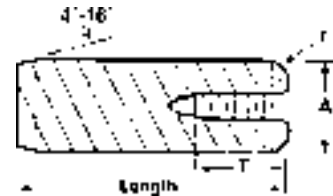
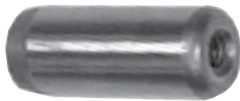
PKG QTY. 50

DOWEL PULL PINS

with Internal Threads

SPECIFICATIONS:

Material: Alloy steel, case-hardened to 58-62 Rockwell C Scale
Precision ground: .0002 over nominal ±.0001
Surface finish: 8 Micro. In. Max.



NOM. O.D.	1/4"	5/16"	3/8"	7/16"	1/2"	5/8"	3/4"	1"	
A	.2501-.2503	.3126-.3128	.3751-.3753	.4376-.4378	.5001-.5003	.6251-.6253	.7501-.7503	1.0001-1.0003	
INSIDE TAP	8-32	10-32	10-32	1/4"-20	1/4"-20	1/4"-20	5/16"-18	5/16"-18	
T	21/64"	21/64"	3/8"	1/2"	1/2"	1/2"	5/8"	3/4"	
r	1/16"	1/16"	5/64"	3/32"	7/64"	1/8"	1/8"	1/8"	
Length	ORDER BY SPAENAUR No's. LISTED BELOW								
3/4"	238-D13-1K	238-1354	238-C35-1X	238-1366	238-1367	238-1372			
1"	238-1351	238-1355	238-1359	238-1363					
1-1/4"		238-1349							
1-1/2"	238-1352	238-C20-1K	238-1360	238-1364	238-1368	238-1373	238-1375		
1-3/4"		238-1349							
2"	238-1353	238-1357	238-1361	238-1365	238-1369	238-1374	238-1376	238-1378	
2-1/2"			238-1362		238-1370		238-C22-1M		
3"					238-1371			238-1379	
3-1/2"								238-1383	
4"			Contact Sales Desk For Package Quantities						238-1384
5"								238-1385	

More INCH DOWEL PINS on page E82

See our full line of Hairpin Clips and Assortments on Page E60