

# Woodruff Keys / Assortments

Inch

## Clés Woodruff / Assortiments

Pouce

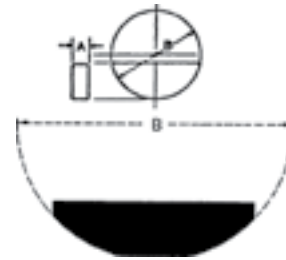
AISI C1035 Steel

# Carbon STEEL

Not Plated

also Nickel Alloy (A-8630 Steel)  
Heat Treated RC-40/50

Used on armature shafts of starters, generators, etc.  
Larger sizes used widely on farm implements, tractors, etc.



Dimensions in Inches

SPAENAUR No.		SIZE		SPAENAUR No.		SIZE	
Carbon Steel	Nickel Alloy	(A) Width x Dia. (B)	PKG QTY.	Carbon Steel	Nickel Alloy	(A) Width x Dia. (B)	PKG QTY.
WK-30		1/16 x 3/8	25	WK-16		3/16 x 1-1/8	25
131-001		1/8 x 3/8	25	WK-17		7/32 x 1-1/8	25
WK-1		1/16 x 1/2	25	WK-18	131-003	1/4 x 1-1/8	25
WK-2		3/32 x 1/2	25	WK-18C		5/16 x 1-1/8	25
WK-3		1/8 x 1/2	25	WK-19		3/16 x 1-1/4	25
WK-4		3/32 x 5/8	25	WK-20		7/32 x 1-1/4	25
131-A01-1T		1/8 x 5/8	25	WK-21	131-004	1/4 x 1-1/4	25
WK-6		5/32 x 5/8	25	WK-21D		5/16 x 1-1/4	25
WK-6-1		3/16 x 5/8	25	WK-21-E		3/8 x 1-1/4	25
WK-7		1/8 x 3/4	25	WK-22		1/4 x 1-3/8	25
WK-8		5/32 x 3/4	25	WK-23		5/16 x 1-3/8	25
131-A04-1M		3/16 x 3/4	25	WK-23F		3/8 x 1-3/8	25
WK-9-1		1/4 x 3/4	25	WK-24		1/4 x 1-1/2	25
WK-10		5/32 x 7/8	25	WK-25		5/16 x 1-1/2	25
WK-11		3/16 x 7/8	25	WK-25G		3/8 x 1-1/2	25
WK-12		7/32 x 7/8	25	WK-27		1/4 x 2-1/8	25
WK-12A		1/4 x 7/8	25	WK-28		5/16 x 2-1/8	25
131-A03-1W		3/16 x 1	25	WK-29	131-005	3/8 x 2-1/8	25
WK-14		7/32 x 1	25	WK-29S		5/16 x 2-3/4	25
WK-15	131-002	1/4 x 1	25	WK-29TX		3/8 x 2-3/4	25
WK-15B		5/16 x 1	25	WK-31		3/4 x 3-1/2	10

**PLASTIKIT A-56**

KEYS in 12 sizes, as used frequently in every garage.  
Size: 1" x 2-3/4" x 4-1/2"

## WOODRUFF KEYS

SAE 1035 Carbon Steel

Inch Sizes Not Plated

12 SIZES  
100 PIECES



Compatible Shaft Diameter	Spaenaur No.	Machine Key Width	Qty.
1/2"	WK-2	3/32"	10
	WK-3	1/8"	
5/8"	WK-4	3/32"	15
	131-A01-1T	1/8"	
	WK-6	3/32"	
3/4"	WK-8	5/32"	10
7/8"	WK-10	3/16"	5
	WK-11		
1"	131-A03-1W	7/32"	3
	WK-14		
1-1/4"	WK-19	3/16"	2
	WK-20	7/32"	2

**ASSORTMENT A-207** 16 SIZES  
210 PIECES

## WOODRUFF KEYS

SAE 1035 CARBON STEEL - Not Plated

Put up in a REGULAR SIZE grey enamelled STEEL drawer. All bins are SCOOPED for easy removal of contents. Drawer will fit into the Slide Racks shown on page A2

Machine Key Width	Spaenaur No.	Compatible Shaft Diameter	Qty.
3/32"	WK-2	1/2"	15
	WK-4	5/8"	
1/8"	WK-3	1/2"	20
	131-A01-1T	5/8"	
5/32"	WK-6	3/4"	15
	WK-8	7/8"	
	WK-10	1"	
3/16"	131-A04-1M	3/4"	12
	WK-11	7/8"	
	131-A03-1W	1"	
	WK-16	1-1/8"	
7/32"	WK-20	1-1/4"	8
1/4"	WK-12A	7/8"	12
	WK-15	1"	
	WK-18	1-1/8"	
5/16"	WK-15B	1"	8

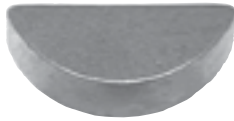
Metric

Woodruff Keys / Assortments

Métrique

Clés Woodruff / Assortiments

# Carbon STEEL METRIC

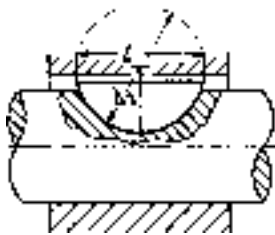
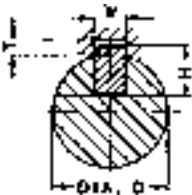


## Woodruff Keys

Not Plated

Conforming to **DIN 6888**

Standard Tolerance: h9



SPAENAUR No.	Nominal Size Width & Height (W) (H)	Dimensions in Millimeters			Use with Shaft Dia. From - To	PKG QTY.
		L	d2	T		
132-001	1.5 x 2.6	6.76	7	2.	4-6	25
132-002	2 x 2.6	6.76	7	1.8	6-8	25
132-003	2 x 3.7	9.66	10	2.9	6-8	25
132-005	2.5 x 3.7	9.66	10	2.9	8-10	25
132-006	3 x 3.7	9.66	10	2.5	8-10	25
132-007	3 x 5	12.65	13	3.8	8-10	25
132-008	3 x 6.5	15.72	16	5.3	8-10	25
132-A11-1Y	4 x 5	12.65	13	3.5	10-12	25
132-010	4 x 6.5	15.72	16	5.	10-12	25
132-011	4 x 7.5	18.57	19	6.	10-12	25
132-012	5 x 6.5	15.72	16	4.5	12-17	25
132-013	5 x 7.5	18.75	19	6	12-17	25
132-014	5 x 9	21.63	22	7.	12-17	25
132-015	6 x 7.5	18.57	19	5.1	17-22	25
132-016	6 x 9	21.63	22	6.6	17-22	25
132-017	6 x 10	24.49	25	7.6	17-22	25
132-018	6 x 11	27.35	28	8.6	17-22	25
132-019	8 x 9	21.63	22	6.2	22-30	25
132-020	8 x 11	27.35	28	8.2	22-30	25
132-021	8 x 13	31.43	32	10.2	22-30	25
132-022	10 x 11	27.35	28	7.8	29-38	25
132-023	10 x 13	31.43	32	9.8	29-38	25

**ASSORTMENT 805-469**

## WOODRUFF KEYS

**METRIC  
DIN 6888**

Carbon Steel  
Not Plated

21 SIZES  
280 PIECES



Furnished in a regular size grey enameled steel drawer, with lid and scooped bins. Drawer will fit the Slide Racks shown on Page A2

Shipping Weight:  
**2.95 kg (6.5 lbs.)**

Machine Key Width	Spaenaur No.	Compatible Shaft Diameter	Qty.	
1.5mm	132-001	4mm - 6mm	20	
2.0mm	132-002 132-003	6mm - 8mm		
2.5mm	132-005	8mm - 10mm		
3.0mm	132-006 132-007 132-008			
4.0mm	132-009 132-010 132-011		10mm - 12mm	15
5.0mm	132-012 132-014		12mm - 17mm	
6.0mm	132-015 132-016 132-017 132-018	17mm - 22mm	10	
8.0mm	132-019 132-020 132-021	22mm - 30mm		
10.0mm	132-022 132-023	29mm - 38mm	5	

**PLASTIKIT 804-070**

**METRIC  
DIN 6888**

## WOODRUFF KEYS

Carbon Steel, Not Plated

11 SIZES  
110 PIECES

Size: 1" x 2-3/4" x 4-1/2"



Spaenaur No.	Width	Compatible Shaft Diameter	Height	Length	Qty.
132-006	3mm	8mm - 10mm	3.7mm	9.66mm	10
132-007			5.0mm	12.65mm	
132-008			6.5mm	15.72mm	
132-009	4mm	10mm - 12mm	5.0mm	12.65mm	
132-010			6.5mm	15.72mm	
132-011	5mm	12mm - 17mm	7.5mm	18.57mm	
132-012			6.5mm	15.72mm	
132-014	6mm	17mm - 22mm	9.0mm	21.63mm	
132-015			7.5mm	18.57mm	
132-016			9.0mm	21.63mm	
132-017			10.0mm	24.49mm	5