

Inch

Thumbscrews

Pouce

Vis de serrage

# THUMBSCREWS

**COLD FORGED**

See page B281  
for WING SCREWS

**LOW CARBON STEEL**

PKG QTY. 100

**ZINC PLATED**



Without  
Shoulder

DIA.	6-32	8-32	10-24	10-32	1/4"-20	5/16"-18	3/8"-16
Thrd. Lgth.	ORDER BY SPAENAUR NUMBERS LISTED BELOW						
3/8"		TS-500	TS-510				
1/2"		TS-502	TS-512	565-064	565-034		
5/8"	TS-1000		565-030				
3/4"		TS-504	TS-514	565-049	TS-524	*TS-534	TS-542
1"		TS-506	TS-516		TS-526	TS-536	▲TS-544
1-1/4"					TS-528		
1-1/2"		TS-508	TS-520		TS-530	TS-538	TS-546
2"			TS-522	TS-1001	TS-532	TS-540	TS-548
2-3/4"							565-050

▲TS-544YZ Yellow Zinc Pltd. \*565-063 with Cup Point



With  
Shoulder

DIA.	6-32	8-32	10-24	10-32	1/4"-20	5/16"-18	3/8"-16
Thrd. Lgth.	ORDER BY SPAENAUR NUMBERS LISTED BELOW						
3/8"		TS-501					
1/2"	565-051	565-054	565-057	565-059	565-031		
3/4"	565-052	565-055	565-033	565-060	TS-525	TS-535	
1"		565-056	TS-517	565-061	TS-527		
1-1/2"			565-058				
2"					565-032	TS-541	TS-549



Without  
Shoulder

With  
Nylon Tip

DIA.	6-32	8-32	10-24	10-32	1/4"-20	5/16"-18	3/8"-16
Thrd. Lgth.	ORDER BY SPAENAUR NUMBERS LISTED BELOW						
1/2"		565-036		565-038	565-041	565-044	
3/4"		565-037		565-039	565-042	565-045	
1"				565-040	565-043	565-046	565-047
1-1/2"							565-048

PKG QTY. 10 of Nylon Tip Thumbscrews only.

CATALOG 14

SPAENAUR



Page  
**A59**

**PLASTIKIT** 804-089  
«PLASTIKIT»

**THUMBSCREWS**  
Cold Forged Steel  
Zinc Plated  
**9 SIZES - 85 PIECES**



Size: 1" x 2-3/4" x 4-1/2"  
Clear durable, plastic container

**Thumbscrews**

Inch

Vis de serrage

Pouce

**18-8 STAINLESS STEEL THUMBSCREWS**

"A"



WITH SHOULDER

"B"



WITHOUT SHOULDER

DIA.	A 10-24	A 10-32	B 10-24	B 10-32	B 1/4"-20	B 5/16"-18	B 3/8"-16
Thread Length	ORDER BY SPAENAUR NUMBERS LISTED BELOW						
1/2"	567-809	567-A01-1X		567-819			
3/4"	TS-2004	567-808			TS-2009	567-815	TS-2014
1"	TS-2005	567-811			TS-2010	TS-2012	TS-2015
1-1/4"	567-810	567-812	567-814			567-816	567-817
1-1/2"	TS-2006	567-813	567-818		TS-2011	TS-2013	TS-2016
	PKG QTY. 100						PKG QTY. 50

**BRASS THUMBSCREWS**

Without Shoulder



COARSE  
THREAD

DIA.	1/4"-20	5/16"-18	3/8"-16
Thread Length	ORDER BY SPAENAUR NUMBERS		
1/2"	TS-575	TS-580	
3/4"	TS-576	TS-581	TS-587
1"	TS-577	TS-582	TS-588
1-1/4"	566-001	TS-583	566-002
1-1/2"	TS-578	TS-584	TS-590
2"	TS-579	TS-585	TS-591
	PKG QTY. 100		PKG QTY. 10

**BRASS KNURLED THUMBSCREWS**



Plain Brass only stocked.  
Plated finishes  
available to order at extra cost.

DIA.	4-36	4-40	6-32	8-32	10-24	10-32	12-24	1/4"-20
Thread Lgth.	ORDER BY SPAENAUR NUMBERS LISTED BELOW							
1/4"	TS-550	TS-592	566-A08-1W					
3/8"	TS-551		566-A06-1T	566-A01-1A				
1/2"	TS-552		566-A05-1N	566-A07-1K	TS-563	TS-566	TS-569	TS-572
3/4"	TS-553		566-A09-1M	566-A04-1C	TS-564	566-A03-1Y	TS-570	TS-573
1"			TS-558	TS-562	TS-565	566-A02-1P	TS-571	TS-574
	PKG QTY. 100							

More Wing and Thumbscrews on B281 - B285

**B280**

© 2018 Spaenaur Inc. All rights reserved. Catalog may not be reproduced, in whole or in part, without the written permission of Spaenaur Inc. Subject to Catalog Terms and Conditions of Use available at Spaenaur.com and on page TC2 and TC3 at the back of this catalog.  
© 2018 Spaenaur Inc. Tous droits réservés. Le catalogue ne peut être reproduit, en tout ou en partie, sans l'autorisation écrite de Spaenaur Inc. L'utilisation est soumise aux Conditions d'utilisation du Catalogue disponibles sur Spaenaur.com et à la page TC4 et TC5 à la fin de ce catalogue.

Inch

Wing Screws

Pouce

Vis à oreilles

**STEEL** COLD FORGED  
**WING SCREWS**

YELLOW ZINC CHROMATE PLATED

Contact Sales Desk For Package Quantities



with **SHOULDER** or  
**BEARING FACE** (our option).

**Riveted-on Head**

Other Styles  
on page B279

Dia./Thread	8-32	10-24	1/4"-20	5/16"-18	3/8"-16
WING SPREAD	27/32"	1-1/16"	1-7/32"	1-7/32"	1-13/32"
Thread Length	ORDER BY SPAENAUR NUMBERS LISTED BELOW				
3/8"	565-001	565-008			
1/2"	565-002	565-009			
3/4"	565-003	565-010	565-015	*565-T01-1K	565-025
1"	565-004	565-011	565-016	*565-021	565-026
1-1/4"	565-005	565-012	565-017	565-022	565-027
1-1/2"	565-006	565-013	565-018	565-023	565-028
2"	565-007	565-014	565-019	565-024	565-029

\*1-13/32" Wing Spread

**18-8 STAINLESS STEEL**

Dia./Thread	10-24	1/4"-20	5/16"-18	3/8"-16
WING SPREAD	1-1/16"	1-7/32"	1-7/32"	1-13/32"
Thread Length	ORDER BY SPAENAUR NUMBERS LISTED BELOW			
3/8"	565-811	565-817	565-822	
1/2"		565-800		
5/8"	565-812	565-801		565-828
3/4"	565-813	565-802	565-804	565-806
1"	565-814	565-803	565-805	565-807
1-1/4"	565-815	565-818	565-824	565-829
1-3/8"				565-808
1-1/2"	565-816	565-819	565-825	565-809
1-3/4"		565-820	565-826	565-830
2"		565-821	565-827	565-810

Wing Screws / Thumbscrews

Metric

Vis à oreilles / Vis de serrage

Métrique

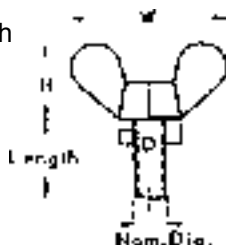
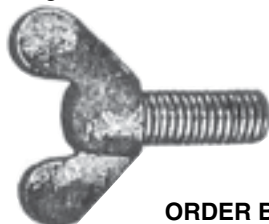
**MALLEABLE IRON**

**CAST BRASS**

ISO Metric  
Regular (coarse) Thread  
6g or 8g Thread Fit - FULLY THREADED

WING - Malleable Casting  
SCREW - Steel  
FINISH - Zinc Plated

Plain Finish



SIZE	THDS. PER INCH	DIA. D mm	Height H mm	Width W mm
M4	36-1/4	8	10	20
M5	31-3/4	10	12	25
M6	25-1/2	12	16	32
M8	20-1/4	16	20	40
M10	17	20	25	50

**DIN 316**

ORDER BY SPAENAUR NUMBERS LISTED BELOW

Length in mm	MALLEABLE IRON - Zinc Plated				
	M4	M5	M6	M8	M10
8					
10	570-002	570-006	570-012		
12	570-003			570-020	
16	570-004	570-008	570-014	570-021	570-031
20		570-010	570-016	570-023	570-032
25			570-042	570-025	570-034
30			570-018	570-M01-1Y	570-041
40					570-036
45				570-028	
50					570-038
60				570-030	570-039
PKG QTY. 100			PKG QTY. 50		

BRASS - Plain Finish				
M4	M5	M6	M8	M10
571-050	571-054			
571-051	571-055	571-060		
		571-061	571-066	
571-052	571-056	571-062	571-067	
	571-057	571-063	571-068	571-071
	571-058			
	571-059	571-065	571-069	571-072
			571-W01-1P	571-073
				571-074
PKG QTY. 100			PKG QTY. 50	

**BRASS**

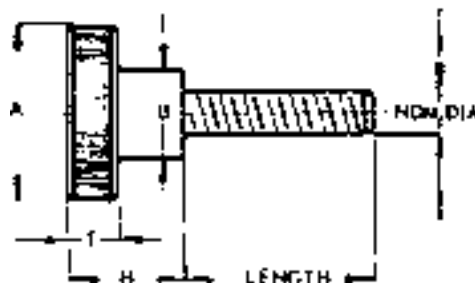
**Knurled Thumbscrews**  
Vis à tête moletée

ISO  
Regular (coarse)  
Thread

ISO METRIC

RAISED KNURLED HEAD SCREWS

CONFORMING TO **DIN 464** REGULAR PITCH



DATA IN mm

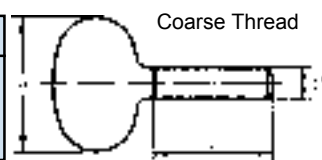
SIZE	NOMINAL DIAMETER				
	M3	M4	M5	M6	M8
A	12	16	20	24	30
B	6	8	10	12	16
T	2.5	3.5	4	5	6
H	7.5	9.5	11.5	15	18

Length in mm	ORDER BY SPAENAUR NUMBERS LISTED BELOW				
	NOMINAL DIAMETER				
	M3	M4	M5	M6	M8
5	571-001	571-007			
6			571-013		
8	571-002	571-009			
10				571-020	
12	571-005	571-011			571-025
16	571-006	571-012	571-017	571-022	
20			571-018		571-027
25				571-024	571-028
PKG QTY. 100			PKG QTY. 25		

**METRIC THUMBSCREWS**

Malleable Casting  
Zinc Plated  
PKG QTY. 50

SPAENAUR No.	d1	L	a
570-050	M5	10 mm	21 mm
570-051	M5	16 mm	21 mm
570-052	M6	25 mm	24 mm



Inch and Metric  
Pouce et Métrique



Thumbscrews

Vis de serrage

### Thumbscrews

**Type 6/6**  
UL 94V2  
(Natural Colour)

**Inch Sizes**

Thread Size	A	B	C
4-40	.300	.280	.120
6-32	.360	.275	.125
8-32	.425	.305	.140
10-24	.425	.325	.140
10-32	.425	.325	.140
1/4-20	.540	.365	.155
5/16-18	.625	.406	.171
3/8-16	.687	.437	.187
1/2-13	.750	.468	.203

SPAENAUR No.	Thread Size	Length	PKG QTY.
568-001	4-40	1/4	100
568-002	4-40	3/8	100
568-003	4-40	1/2	100
568-004	4-40	3/4	100
568-005	6-32	1/4	100
568-006	6-32	3/8	100
568-007	6-32	1/2	100
568-008	6-32	3/4	100
568-009	6-32	1	100
568-010	8-32	3/16	100
568-011	8-32	3/8	100
568-012	8-32	1/2	100
568-013	8-32	3/4	100
568-014	8-32	1	100
568-016	10-24	1/2	100
568-017	10-24	3/4	100
568-018	10-24	1	100
568-019	10-24	1-1/4	100
568-020	10-24	2	100
568-021	10-32	3/8	100
568-022	10-32	1/2	100
568-023	10-32	3/4	100
568-024	10-32	1	100
568-026	10-32	2	100
568-029	1/4-20	1/2	100
568-030	1/4-20	3/4	100
568-031	1/4-20	1	100
568-032	1/4-20	1-1/4	100
568-033	1/4-20	1-1/2	100
568-067	5/16-18	1/2	100
568-068	5/16-18	1	50
568-069	5/16-18	1-1/2	50
568-070	5/16-18	2	50
568-071	3/8-16	1/2	100
568-072	3/8-16	1	50
568-073	3/8-16	1-1/2	50
568-074	3/8-16	2	50
568-075	1/2-13	1/2	50
568-076	1/2-13	1	50
568-077	1/2-13	1-1/2	25
568-078	1/2-13	2	25

### CORROSION-RESISTANT NYLON 6/6 Thumbscrews

**Type 6/6**  
UL 94V2  
(Natural Colour)

**Inch Sizes**

Thread Size	A	B	C	E
4-40	.216	.317	.039	.045
6-32	.250	.348	.042	.051
8-32	.280	.381	.049	.059
10-24	.317	.412	.056	.068
10-32	.317	.412	.056	.068
1/4-20	.326	.492	.070	.088

SPAENAUR No.	Thread Size	Length	PKG QTY.
568-034	4-40	1/4	100
568-035	4-40	3/8	100
568-036	4-40	1/2	100
568-037	4-40	3/4	100
568-038	6-32	1/4	100
568-039	6-32	3/8	100
568-040	6-32	1/2	100
568-041	6-32	3/4	100
568-042	6-32	1	100
568-043	8-32	1/4	100
568-044	8-32	3/8	100
568-045	8-32	1/2	100
568-046	8-32	3/4	100
568-047	8-32	1	100
568-053	10-24	1/4	100
568-048	10-24	3/8	100
568-049	10-24	1/2	100
568-050	10-24	3/4	100
568-051	10-24	1	100
568-052	10-24	1-1/4	100
568-059	10-32	1/4	100
568-054	10-32	3/8	100
568-055	10-32	1/2	100
568-056	10-32	3/4	100
568-057	10-32	1	100
568-058	10-32	1-1/4	100
568-060	1/4-20	1/4	100
568-061	1/4-20	3/8	100
568-062	1/4-20	1/2	100
568-063	1/4-20	3/4	100
568-064	1/4-20	1	100
568-065	1/4-20	1-1/4	100
568-066	1/4-20	1-1/2	100

### METRIC MOLDED NYLON 6/6

**Type 6/6**  
UL 94V2

### Slotted Thumbscrew

(Natural Colour)  
Metric (COARSE) Thread

**ALL DIMENSIONS IN MILLIMETRES**

THREAD SIZE	A	B	C	E
M3 x .5	5.2	7.6	1.0	1.1
M3.5 x .6	6.1	8.5	1.1	1.3
M4 x .7	7.1	9.4	1.2	1.5
M5 x .8	7.7	10.0	1.3	1.5
M6 x 1.0	7.75	12.21	1.14	1.53

SPAENAUR No.	Thread Size & Length	PKG QTY.
568-100	M3 x .5 x 5 mm	100
568-101	M3 x .5 x 6 mm	100
568-102	M3 x .5 x 8 mm	100
568-103	M3 x .5 x 10 mm	100
568-104	M3 x .5 x 12 mm	100
568-105	M3 x .5 x 16 mm	100
568-106	M3 x .5 x 20 mm	100
568-107	M3 x .5 x 25 mm	100
568-108	M3 x .5 x 30 mm	100
568-109	M3.5 x .6 x 5 mm	100
568-110	M3.5 x .6 x 6 mm	100
568-111	M3.5 x .6 x 8 mm	100
568-112	M3.5 x .6 x 10 mm	100
568-113	M3.5 x .6 x 12 mm	100
568-114	M3.5 x .6 x 16 mm	100
568-115	M3.5 x .6 x 20 mm	100
568-116	M3.5 x .6 x 25 mm	100
568-117	M3.5 x .6 x 35 mm	100
568-118	M4 x .7 x 6 mm	100
568-119	M4 x .7 x 8 mm	100
568-120	M4 x .7 x 10 mm	100
568-121	M4 x .7 x 12 mm	100
568-122	M4 x .7 x 16 mm	100
568-123	M4 x .7 x 20 mm	100
568-124	M4 x .7 x 25 mm	100
568-125	M5 x .8 x 6 mm	100
568-126	M5 x .8 x 8 mm	100
568-127	M5 x .8 x 10 mm	100
568-128	M5 x .8 x 12 mm	100
568-129	M5 x .8 x 16 mm	100
568-130	M5 x .8 x 20 mm	100
568-131	M5 x .8 x 25 mm	100
568-132	M5 x .8 x 30 mm	100
568-133	M5 x .8 x 40 mm	100
568-134	M6 x 1.00 x 8 mm	50
568-135	M6 x 1.00 x 10 mm	50
568-136	M6 x 1.00 x 12 mm	50
568-137	M6 x 1.00 x 16 mm	50
568-138	M6 x 1.00 x 20 mm	50
568-139	M6 x 1.00 x 25 mm	50
568-140	M6 x 1.00 x 35 mm	50
568-141	M6 x 1.00 x 45 mm	50

CATALOG 14 SPAENAUR



**Thumbscrew Knobs**

Boutons de vis de serrage

*shear-LOC*<sup>®</sup>

**THUMB SCREW KNOBS**

Make any quantity -any size  
- as needed.

Use Shear-Loc KNOBS,  
plus 1960 Series  
Socket Head Cap Screws.

U.S.A. PATENT NO. 3,529,508  
PATENT PENDING IN OTHER COUNTRIES

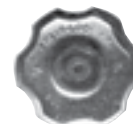


Make your own Thumbscrews... instantly.

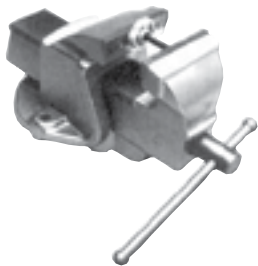
**1** Select a standard hex  
socket head cap screw



**2** Select a standard  
Shear-Loc Knob



**3** Select a way to press  
and cold-form together



**4** YOUR INSTANT  
THUMBSCREW



Shear-Loc Knobs are made  
of tough "DELRIN 500™".

**REGULAR and LARGE Size Thumbscrew Knob Assortments**

**ASSORTMENT 805-418**

**Inch SHEAR-LOC<sup>®</sup>  
THUMBSCREW KNOBS**

**24 VARIETIES - 507 PIECES**

For use with Hex Socket Cap Screws in  
inch sizes #4 to 3/8" dia.  
Delrin Plastic - Black, Grey, Red

REGULAR SIZE Drawer:  
13-5/16" x 9-1/4" x 2"

Shipping weight: **2.9 kg** (6.5 lbs.)



805-418

**ASSORTMENT 805-419**

**Metric SHEAR-LOC<sup>®</sup>  
THUMBSCREW KNOBS**

**22 VARIETIES - 456 PIECES**

For use with Metric Hex Socket Cap Screws  
in diameters **M3 to M10**.  
Delrin Plastic - Black, Grey, Red

REGULAR SIZE Drawer:  
13-5/16" x 9-1/4" x 2"

Shipping weight: **2.9 kg** (6.5 lbs.)



**For the complete assortment contents turn to A59**



**Page  
A60**

**ASSORTMENT 805-445**

**KNOBS – Inch and Metric  
SHEAR-LOC<sup>®</sup> TEE STYLE THUMBSCREW**

**24 VARIETIES - 510 PIECES**

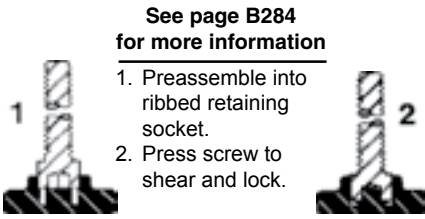
REGULAR SIZE grey enamelled drawer.  
Shipping weight: **2.7 kg** (6 lbs.)

Inch and Metric  
Pouce et Métrique

**shear-Loc**<sup>®</sup>

**Thumbscrew Knobs / Tee Knobs / L Knobs**  
Boutons de vis de serrage / Poignées en T / Poignées en L

**THUMB SCREW KNOBS**



See page B284 for more information

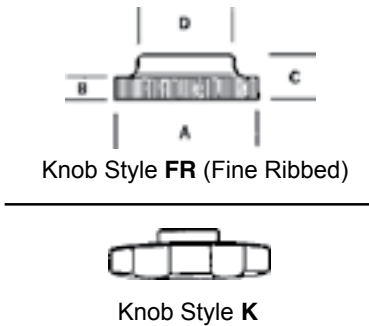
1. Preassemble into ribbed retaining socket.
2. Press screw to shear and lock.

Shear-Loc Knobs are made of DuPont "Delrin 500." They are tough, and will endure all normal thumbscrew applications.

**INCH SIZES**

SPAENAUR NUMBERS			KNOB STYLE	USE WITH SCREW	Measurements in inches				PKG QTY.
BLACK	GRAY	RED			A	B	C	D	
134-074	134-075	134-076	FR	#4	5/16"	9/64"	11/64"	9/32"	100
134-077	134-078	134-079		#6	3/8"	5/32"	13/64"	21/64"	100
134-080	134-081	134-082		#8	1/2"	5/32"	7/32"	3/8"	100
134-083	134-084	134-085		#10	5/8"	11/64"	1/4"	27/64"	100
134-086	134-087	134-088		1/4"	3/4"	11/64"	5/16"	31/64"	100
134-089	134-090	134-091		1/4"	1"	17/64"	5/16"	1/2"	100
134-092	134-093	134-094		5/16"	1"	17/64"	3/8"	19/32"	100
134-095	134-096	-		K	5/16"	1-1/2"	3/8"	13/32"	19/32"
134-097	134-098	-	K	3/8"	1-1/2"	3/8"	15/32"	43/64"	50

**THUMBSCREW KNOBS**



**METRIC SIZES**

SPAENAUR NUMBERS			KNOB STYLE	USE WITH SCREW	Measurements in mm				PKG QTY.
BLACK	GRAY	RED			A	B	C	D	
134-500	134-501	134-502	FR	M3	9.5	4.0	4.8	8.1	100
134-503	134-504	134-505		M4	13.0	4.0	5.5	10.0	100
134-506	134-507	134-508		M5	16.0	4.5	6.9	11.5	100
134-509	134-510	134-511		M6	19.0	4.5	7.8	13.1	100
134-512	134-513	134-514		M6	26.0	8.0	8.0	13.1	100
134-515	134-516	134-517		M8	26.0	7.7	10.0	16.0	100
134-518	134-519	-	K	M8	38.0	10.0	10.0	16.0	50
134-520	134-521	-		M10	38.0	10.0	12.5	19.8	50

**TEE KNOBS**



TEE KNOB

**INCH SIZES**

USE ON 1960 SERIES HEX SOCKET HEAD CAP SCREWS

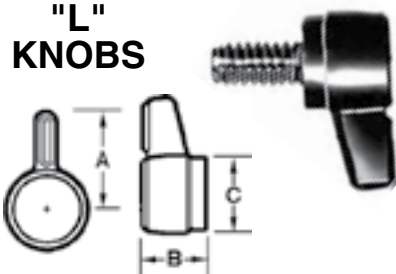
SPAENAUR NUMBERS			KNOB STYLE	FITS SCREW	Measurements in inches			PKG QTY.
BLACK	GRAY	RED			A	B	C	
134-099	134-100	134-107	TEE	#10	1"	1/4"	7/16"	100
134-101	134-102	134-108		1/4"	1-1/4"	5/16"	33/64"	100
134-103	134-104	134-109		5/16"	1-1/2"	13/32"	5/8"	50
134-105	134-106	134-110		3/8"	1-3/4"	15/32"	23/32"	50

**METRIC SIZES**

USE ON DIN 912 - JAPAN J.I.S. - BRITISH METRIC SERIES

SPAENAUR NUMBERS			KNOB STYLE	FITS SCREW	Measurements in mm			PKG QTY.
BLACK	GRAY	RED			A	B	C	
134-522	134-523	134-530	TEE	M5	26	6.6	12	100
134-524	134-525	134-531		M6	30	7.8	13.5	100
134-526	134-527	134-532		M8	38	10	16.5	50
134-528	134-529	134-533		M10	45	12.5	20	50

**"L" KNOBS**



**INCH SIZES**

USE ON 1960 SERIES HEX SOCKET HEAD CAP SCREWS

SPAENAUR NUMBERS			KNOB STYLE	FITS SCREW	Measurements in inches			PKG QTY.
BLACK	GRAY	RED			A	B	C	
134-111	134-114	134-117	L	#10	9/16"	11/32"	29/64"	100
134-112	134-115	134-118		1/4"	11/16"	7/16"	33/64"	100
134-113	134-116	134-119		5/16"	27/32"	17/32"	41/64"	50

Yellow Colour also available on Special Order.