

**Fully Threaded Rods**

Inch

Tiges entièrement filetées

Pouce

**STEEL** THREADED RODS

**Inch Sizes**

The versatile do-it-yourself rod for making U-bolts, eye-bolts, hangers, ladder rungs, and many types of special items. Cold-drawn steel bends easily without heating. Just cut to desired length and use.

Right-hand Threads  
THREADED FULL LENGTH

Grade: C1010 (or better)  
ASTM spec A-307  
Minimum tensile strength  
50,000 to 60,000 psi

**Finishes: Plain and Zinc Plated**

All Threaded Rods shown below: PKG QTY 1.

**ORDER BY SPAENAUR NUMBERS LISTED BELOW**

\* Zinc Plated

THREAD SIZE	Plain		Zinc Pltd.		Plain		Zinc Pltd.		Plain		Zinc Pltd.	
	24" Lgth.	24" Lgth.	36" Lgth.	36" Lgth.	72" Lgth.	72" Lgth.	120" Lgth.	120" Lgth.	144" Lgth.	144" Lgth.	144" Lgth.	144" Lgth.
4-40	TR-44		866-055	866-055ZP								
5-40			866-012	866-012ZP								
6-32	TR-46	TR-46ZP	866-056	866-056ZP								
8-32	TR-48	TR-48ZP	866-057	866-057ZP								
10-24	TR-50	TR-50ZP	866-058	866-058ZP								
10-32	TR-52	TR-52ZP	866-059	866-059ZP								
12-24	TR-54	TR-54ZP	866-060	866-060ZP								
1/4"-20	866-146	*866-A02-1A	TR-4	TR-4ZP	866-013	866-013ZP	866-061	866-061ZP	866-130	866-130ZP		
1/4"-28	866-145	866-145ZP	866-001	866-001ZP								
5/16"-18	866-142	866-142ZP	TR-5	TR-5ZP	866-014	866-014ZP	866-062	866-062ZP	866-131			
5/16"-24			866-002	866-002ZP								
3/8"-16			TR-6	TR-6ZP	866-015	866-015ZP	866-063	866-063ZP	866-079	866-079ZP		
3/8"-24			866-003	866-003ZP	866-154				866-054			
7/16"-14	866-143	866-143ZP	TR-7	TR-7ZP	866-016	866-016ZP	866-064	866-064ZP	866-132	866-132ZP		
7/16"-20			866-004	866-004ZP								
1/2"-13			TR-8	TR-8ZP	866-017	866-017ZP	866-065	866-065ZP	866-081	866-081ZP		
1/2"-20			866-005	866-005ZP								
9/16"-12			866-125	866-125ZP	866-127	866-127ZP	866-128	866-128ZP	866-129			
9/16"-18			866-126	866-126ZP								
5/8"-11			TR-10	TR-10ZP	866-018	866-018ZP	866-066	866-066ZP	866-082			
5/8"-18			866-006	866-006ZP								
3/4"-10			TR-12	TR-12ZP	866-019	866-019ZP	866-067	866-067ZP	866-083			
3/4"-16			866-007	866-007ZP								
7/8"-9	866-A01-1X	866-144ZP	TR-14	TR-14ZP	866-020	866-020ZP	866-068	866-068ZP	866-084			
7/8"-14			866-008	866-008ZP								
1"-8			TR-16	TR-16ZP	866-021	866-021ZP	866-124	866-124ZP	866-069	866-069ZP		
1"-14			866-009	866-009ZP								
1-1/8"-7			TR-18	TR-18ZP	866-148				866-070	866-070ZP		
1-1/8"-12			866-010	866-010ZP								
1-1/4"-7			TR-20	TR-20ZP	866-149				866-071			
1-1/4"-12			866-011	866-011ZP								
1-3/8"-6			TR-22	TR-22ZP	866-150				866-072			
1-3/8"-12				866-120ZP								
1-1/2"-6			TR-24	TR-24ZP	866-151				866-073			
1-1/2"-12			866-121	866-121ZP								
1-5/8"-5-1/2				TR-26ZP								
1-3/4"-5			TR-28	TR-28ZP	866-152				866-075			
2"-4-1/2			TR-32	TR-32ZP	866-153				866-076			

**Weight Chart for Steel Threaded Rod**  
Approximate Weight in Lbs. per Foot

Thread Size	Weight per Foot
4-40	.024 lbs.
5-40	.032 lbs.
6-32	.036 lbs.
8-32	.054 lbs.
10-24	.070 lbs.
12-24	.100 lbs.
1/4"-20	.120 lbs.
5/16"-18	.200 lbs.

Thread Size	Weight per Foot
3/8"-16	.290 lbs.
7/16"-14	.400 lbs.
1/2"-13	.540 lbs.
9/16"-12	.667 lbs.
5/8"-11	.834 lbs.
3/4"-10	1.240 lbs.
7/8"-9	1.667 lbs.
1"-8	2.223 lbs.

Thread Size	Weight per Foot
1-1/8"-7	2.667 lbs.
1-1/4" 7	3.334 lbs.
1-3/8"-6	4.112 lbs.
1-1/2"-6	4.667 lbs.
1-5/8"-5-1/2	6.334 lbs.
1-3/4"-5	7.000 lbs.
2"-4-1/2	9.112 lbs.

**B286**

© 2018 Spaenaur Inc. All rights reserved. Catalog may not be reproduced, in whole or in part, without the written permission of Spaenaur Inc. Subject to Catalog Terms and Conditions of Use available at Spaenaur.com and on page TC2 and TC3 at the back of this catalog.  
© 2018 Spaenaur Inc. Tous droits réservés. Le catalogue ne peut être reproduit, en tout ou en partie, sans l'autorisation écrite de Spaenaur Inc. L'utilisation est soumise aux Conditions d'utilisation du Catalogue disponibles sur Spaenaur.com et à la page TC4 et TC5 à la fin de ce catalogue.

For Non-ferrous Threaded Rods see page B290  
For Acme Threaded Rods see page B288

Inch

**Fully Threaded Rods / Locknuts**

Pouce

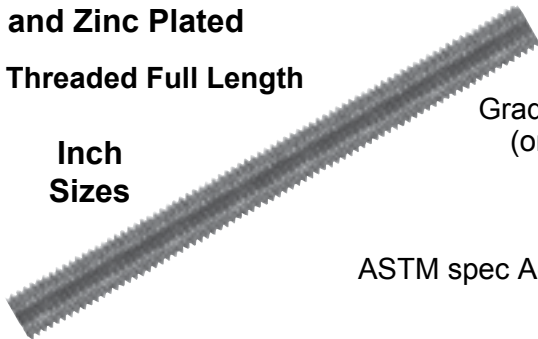
Tiges entièrement filetées / Écrous freinés

**STEEL Threaded Rods**

Self-Colour - Plain Finish  
and Zinc Plated

Threaded Full Length

Inch  
Sizes



Grade: C1010  
(or better)

ASTM spec A-307

Minimum tensile strength  
50,000 to 60,000 psi

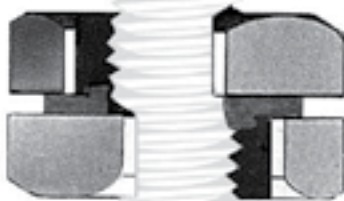
See Page C5 for STEEL Hex. Nuts with LEFT-HAND Threads  
See page B291 for STEEL Coupling Nuts with LEFT-HAND Threads

**Continuous LEFT-HAND Threads**

Thread Size	36" Length SPAENAUR No.		PKG QTY.
	Plain	Zinc Pltd.	
1/4"-20 UNC	866-300	866-300ZP	1
1/4"-28 UNF	866-309	—	1
5/16"-18 UNC	866-301	866-301ZP	1
5/16"-24 UNF	866-311	866-311ZP	1
3/8"-16 UNC	866-302	866-302ZP	1
3/8"-24 UNF	866-313	—	1
7/16"-14 UNC	866-303	866-303ZP	1
1/2"-13 UNC	866-304	866-304ZP	1
1/2"-20 UNF	866-307	866-307ZP	1
5/8"-11 UNC	866-305	866-305ZP	1
3/4"-10 UNC	866-306	866-306ZP	1
3/4"-16 UNF	866-308	866-308ZP	1
1-1/8"-12 UNF	866-312	866-312ZP	1
1-1/4"-7 UNC	866-310	866-310ZP	1

**B**

**Slip-on® Lock Nut** Position at any desired location without threading  
A nut that does not have to be "threaded on."

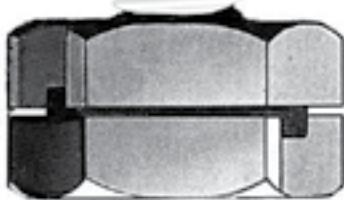


A must for electricians, mechanical contractors, plumbers, steamfitters, sprinkler installers, general contractors, mining contractors, telecommunication industry, television industry, plant maintenance, original equipment manufacturers—and the list goes on. The Slip-On Lock Nut can be used on pipe racks, clevis hangers, cable trays, all-thread rod, anchor bolts that are rusted or bent, and in high vibratory situations. The list of applications is endless.

- Saves time
- Saves money
- Solves rod and retrofit problems

SPAENAUR No.	Thread Size	Width A/F	Approx. Thick.	Recommended Loads	Recommended Torque
165-199	1/4"-20 UNC	5/8"	3/8"	650 lbs.	6-8 ft. lbs.
165-200	3/8"-16 UNC	7/8"	15/32"	2,000 lbs.	19-25 ft. lbs.
165-201	1/2"-13 UNC	1-1/16"	5/8"	4,000 lbs.	50-60 ft. lbs.
165-207	3/4"-10 UNC	1-5/8"	1"	8,000 lbs.	180-200 ft. lbs.

PKG  
QTY.  
10



C1018 Cold Rolled  
Steel, Bright Zinc Pltd.

**MANUFACTURER'S RECOMMENDED INSTALLATION PROCEDURE  
FOR RIGHT-HAND THREADED SLIP-ON LOCK NUTS**

- STEP 1. Line up slot on both halves and position at desired location, placing threads of rod/bolt all the way back into the base of the slot.
- STEP 2. Turn half of the nut, following the direction of the arrows, until both halves tighten down against one another.
- STEP 3. Put wrench on the half of the Slip-On Lock Nut that is farthest away from your fixed structure and tighten, following the direction of the arrows, until slots of both halves are opposite one another (180°).

NOTE: In order to adjust or torque the nut as a unit, turn half of the Slip-On Lock Nut until slot is 120° (2 flats). Then put wrench on entire nut to adjust or torque as you would a conventional nut with compatible materials. Next, follow STEP 3, putting slots at 180° of each other to complete installation.

**Fully Threaded Rods / Hex Nuts / Studs**

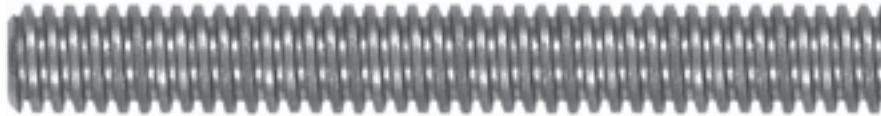
Inch

**Tiges entièrement filetées / Écrous hexagonaux / Goujons**

Pouce

**B**

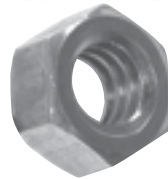
Threaded Full Length



**"ACME" Threaded Rods**

C1018 STEEL, Plain Finish  
29° ACME THREAD  
Fully Threaded in 36" Lengths

SPAENAUR No.	Diameter and T.P.I.	Lgths. in Package
866-133	3/8"-12	1
866-134	1/2"-10	1
866-135	5/8"-8	1
*866-136	3/4"-6	1
866-137	7/8"-6	1
866-138	1"-5	1
866-139	1-1/8"-5	1
866-140	1-1/4"-5	1
866-141	1-1/2"-4	1
866-147	2"-4	1



**"ACME" Hexagon Nuts**

C1018 STEEL, Plain Finish  
ACME THREADS-Right Hand

SPAENAUR No.	Diameter and T.P.I.	Width A/F	Thickness	Type of Nut	PKG QTY.
155-013	3/8"-12	11/16"	3/8"	Heavy	10
155-014	1/2"-10	7/8"	31/64"	Heavy	10
155-015	5/8"-8	1-1/16"	39/64"	Heavy	10
155-016	3/4"-6	1-1/8"	41/64"	Finished	10
155-017	7/8"-6	1-7/16"	55/64"	Heavy	5
155-018	1"-5	1-1/2"	55/64"	Finished	5
155-019	1-1/8"-5	1-13/16"	1-7/64"	Heavy	5
155-020	1-1/4"-5	1-7/8"	1-1/16"	Finished	5
155-021	1-1/2"-4	2-1/4"	1-9/32"	Finished	5
155-022	2"-4	3"	1-3/4"	Finished	1

\*870-010 304 Stainless Steel

**B7 Alloy Steel Studs**  
**Full Right Hand Threaded**

Heat Treated  
Chromium - Molybdenum Alloy Steel  
Quench and Tempered  
For High Temperature Service



**Inch Sizes - UNC Coarse Thread\***

Plain Finish

\*Sizes up to 1" nominal size UNC Class 2A fit.  
1" and over nominal size 8-UN Class 2A fit.

Conforms to ASTM A193 - Grade B7  
Minimum Tensile Strength: 125,000 PSI (860 MPa.)

Length	Spaenaur No.	PKG QTY.	Length	Spaenaur No.	PKG QTY.	Length	Spaenaur No.	PKG QTY.	Length	Spaenaur No.	PKG QTY.	Length	Spaenaur No.	PKG QTY.
<b>1/2"-13</b> Dia.			<b>5/8"-11</b> cont'd.			<b>7/8"-9</b> Dia.			<b>1"-8</b> Dia.			<b>1-1/4"-8</b> Dia.		
1-3/4"	616-130	25	4-1/2"	616-144	20	3"	616-158	10	4"	616-167	10	6"	616-177	1
2"	616-131	25	5"	616-145	20	4"	616-159	10	4-1/2"	616-168	10	8"	616-178	1
2-1/2"	616-132	25	6"	616-146	20	4-1/2"	616-160	10	5"	616-169	10	10"	616-179	1
3"	616-133	25	8"	616-147	1	5"	616-161	10	6"	616-170	10	<b>1-3/8"-8</b> Dia.		
3-1/2"	616-134	25	<b>3/4"-10</b> Dia.			6"	616-162	10	7"	616-171	1	10"	616-180	1
4"	616-135	25	2"	616-148	20	7"	616-163	1	8"	616-172	1	<b>1-1/2"-8</b> Dia.		
4-1/2"	616-136	25	3"	616-149	20	8"	616-164	1	10"	616-173	1	9"	616-181	1
5"	616-137	25	3-1/2"	616-150	20	9"	616-165	1	<b>1-1/8"-8</b> Dia.			10"	616-182	1
6"	616-138	25	4"	616-151	20	10"	616-166	1	5"	616-174	1			
<b>5/8"-11</b> Dia.			4-1/2"	616-152	20				6"	616-175	1			
2"	616-139	20	5"	616-153	20				8"	616-176	1			
2-1/2"	616-140	20	6"	616-154	20									
3"	616-A01-1C	20	7"	616-155	1									
3-1/2"	616-142	20	8"	616-156	1									
4"	616-143	20	10"	616-157	1									

Use with 2H Nuts page B289 and ASTM F436 Hardened Structural Washers page D3.  
B7 Full Threaded Rod, 6 and 12 foot lengths - see following page.

**B288**

© 2018 Spaenaur Inc. All rights reserved. Catalog may not be reproduced, in whole or in part, without the written permission of Spaenaur Inc. Subject to Catalog Terms and Conditions of Use available at Spaenaur.com and on page TC2 and TC3 at the back of this catalog.  
© 2018 Spaenaur Inc. Tous droits réservés. Le catalogue ne peut être reproduit, en tout ou en partie, sans l'autorisation écrite de Spaenaur Inc. L'utilisation est soumise aux Conditions d'utilisation du Catalogue disponibles sur Spaenaur.com et à la page TC4 et TC5 à la fin de ce catalogue.

Inch

**Fully Threaded Rods / Hex Nuts**

Pouce

Tiges entièrement filetées / Écrous hexagonaux

# B7 ALLOY STEEL

**High Strength - High Temperature**

**Inch Sizes - UNC Coarse thread\***

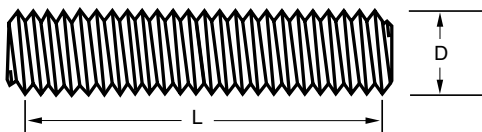
**PLAIN FINISH**

Heat Treated

To ASTM A-193 B7

Minimum Tensile Strength - 125,000 psi.  
Temperature range, from **-101°C to +454°C**

- For use in mining, petroleum, chemical, automotive, and other industries.
- For high pressure, high temperature applications.



D = nominal diameter  
L = length from first to last thread

**Continuous RIGHT-HAND Thread**

**B7 Alloy Steel Threaded Rods and 2H Hex Nuts**

\*Sizes up to 1" nominal size UNC Class 2A and 2B fit, 1" and over nominal size 8 UN Class 2A and 2B fit.

D Dia. & Thread	SPAENAUR No.	
	72" Length	144" Length
1/4"-20	<b>866-200</b>	—
5/16"-18	<b>866-201</b>	—
3/8"-16	<b>866-202</b>	—
7/16"-14	<b>866-203</b>	—
1/2"-13	<b>866-204</b>	<b>866-216</b>
5/8"-11	<b>866-205</b>	<b>866-217</b>
3/4"-10	<b>866-206</b>	<b>866-218</b>
7/8"-9	<b>866-207</b>	<b>866-219</b>
1"-8	<b>866-208</b>	<b>866-220</b>
1-1/8"-8	<b>866-210</b>	<b>866-234</b>
1-1/4"-8	<b>866-211</b>	<b>866-235</b>
1-3/8"-8	<b>866-212</b>	<b>866-236</b>
1-1/2"-8	<b>866-213</b>	<b>866-237</b>
1-5/8"-8	<b>866-214</b>	<b>866-238</b>
1-3/4"-8	<b>866-209</b>	<b>866-239</b>
2"-8	<b>866-215</b>	<b>866-240</b>

**All Threaded Rods listed above PKG QTY. 1**

## 2H Nuts



PLAIN FINISH

**For use with B7 Studs & Rods**

2H Nuts are used for high temperature, high pressure applications such as pipelines, pressure vessels, valves and controls used in the transmission and storage of oil, gasoline, natural gas, steam and many other chemicals.

**PHYSICAL PROPERTIES:**

**Specification:** ASTM A 194-2H  
**Grade:** AISI 1045 or 1050  
**Heat Treatment:** Oil Quench & Temper  
**Hardness:** 248 to 352 Brinell No.

SPAENAUR No. PLAIN	UNC THREAD	ACROSS FLATS	THICKNESS	PKG QTY.
<b>155-200</b>	1/4"-20	1/2"	15/64"	50
<b>155-201</b>	5/16"-18	9/16"	19/64"	25
<b>155-P42-1P</b>	3/8"-16	11/16"	23/64"	25
<b>155-203</b>	7/16"-14	3/4"	27/64"	25
<b>155-204</b>	1/2"-13	7/8"	31/64"	25
<b>155-205</b>	5/8"-11	1-1/16"	39/64"	20
<b>155-206</b>	3/4"-10	1-1/4"	47/64"	10
<b>155-207</b>	7/8"-9	1-7/16"	55/64"	10
<b>155-208</b>	1"-8	1-5/8"	63/64"	10
<b>155-211</b>	1-1/8"-8	1-13/16"	1-7/64"	10
<b>155-210</b>	1-1/4"-8	2"	1-7/32"	10
<b>155-P44-1C</b>	1-3/8"-8	2-3/16"	1-11/32"	10
<b>155-212</b>	1-1/2"-8	2-3/8"	1-15/32"	10
<b>155-P45-1N</b>	1-5/8"-8	2-9/16"	1-19/32"	10
<b>155-214</b>	1-3/4"-8	2-3/4"	1-23/32"	10
<b>155-215</b>	2"-8	3-1/8"	1-31/32"	5

See previous page for B7 ALLOY STEEL STUDS.

See page D3 for ASTM F436 STRUCTURAL WASHERS.

**Threaded Rods**

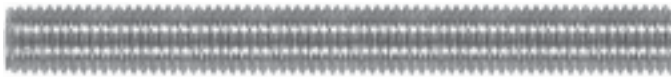
Inch

**Tiges filetées**

Pouce

**THREADED RODS**

Right-Hand Threads  
Threaded Full Length



Self-Colour **BRASS** Plain Finish

**18-8 and 316 STAINLESS STEEL**

**B**

Thread Size	SPAENAUR No.		PKG QTY.	Thread Size	18-8 STAINLESS STEEL				316 S.S. 36" Lgth.	PKG QTY.
	24" Lgth.	36" Lgth.			12" Lgth.	24" Lgth.	36" Lgth.	72" Lgth.		
4-40	TR-500	868-525	25	0000-160						1
5-40	TR-501	868-526	25	000-120	870-002					1
6-32	TR-502	868-518	25	00-96	870-003					1
8-32	TR-503	868-527	25	00-90	870-004					1
10-24	868-A10-1N	868-528	25	0-80	870-005					1
10-32	TR-505	868-A04-1A	25	2-56		870-009				1
12-24		868-529	25	4-40		TR-2000	870-824			25
1/4"-20	868-A07-1C	868-A09-1T	10	6-32		TR-2001	870-825		870-902	25
1/4"-28	TR-508	868-524	10	8-32		870-G12-1A	870-826		870-903	25
5/16"-18	TR-509	868-531	10	10-24		870-G09-1X	870-827		870-G07-1W	1
3/8"-16	868-A03-1X	868-532	10	10-32		TR-2004	870-G06-1K		870-905	1
3/8"-24		868-A05-1P	1	1/4"-20		870-G14-1Y	870-829		870-906	1
7/16"-14		868-539	1	1/4"-28		870-G01-2P	870-830			1
1/2"-13	868-A06-1Y	868-533	1	5/16"-18		TR-2007	870-G11-1X		870-901	1
5/8"-11	TR-512	868-A01-1W	1	5/16"-24		870-G02-1Y	870-G03-1C			1
3/4"-10	868-A08-1N	868-A02-1M	1	3/8"-16		870-G08-1M	870-G05-1T	TR-2016	870-900	1
7/8"-9	TR-514	868-536	1	3/8"-24		870-G10-1M	870-834	870-G13-1P		1
1"-8	TR-515	868-537	1	7/16"-14		TR-2011	870-835	870-841	870-907	1
				1/2"-13		TR-2012	870-836	TR-2017	870-908	1
				1/2"-20		TR-2013	870-G04-1N	870-842		1
				5/8"-11		TR-2014	870-838	TR-2018	870-909	1
				3/4"-10		TR-2015	870-839	TR-2019	870-910	1
				7/8"-9			870-843	TR-2020		1
				1"-8				TR-2021	870-911	1
				1-1/8"-7				TR-2022	870-912	1
				1-1/4"-7				TR-2023	870-913	1
				1-1/2"-6					870-914	1



**ALUMINUM**

Alloy Grade 6061-T6 (ASTM)

**THREADED RODS**

Full Length Right-Hand Threads

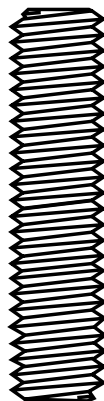
**INCH SIZES**

Thread Size	SPAENAUR No.		PKG QTY.
	36" Lgth.	72" Lgth.	
6-32	863-001	863-A02-1C	10
8-32	863-002	863-A01-1Y	10
10-24	863-A06-1W	863-A03-1N	10
10-32	863-004	863-A09-1A	10
1/4"-20	863-005	863-A07-1M	1
5/16"-18	863-A08-1X	863-025	1
3/8"-16	863-007	863-A04-1T	1
1/2"-13		863-027	1
5/8"-11	863-009	863-A05-1K	1
3/4"-10	863-010	863-029	1
7/8"-9	863-011	863-030	1
1"-8		863-031	1

**NYLON**

(Polyamid 6/6)

**INCH SIZES**



**Full Length THREADED RODS**

RIGHT-HAND THREADS in 48" Lengths

Thread Size	48" Lgth. SPAENAUR No.	PKG QTY.
4-40	872-012 (24" Length)	1
4-40	872-001	1
6-32	872-002	1
8-32	872-003	1
10-24	872-004	1
10-32	872-005	1
1/4"-20	872-006	1
5/16"-18	872-007	1
3/8"-16	872-008	1
1/2"-13	872-010	1
5/8"-11	872-011	1
3/4"-10	872-013	1
7/8"-9	872-014	1
1"-8	872-015	1

**B290**

Inch

Coupling Nuts

Pouce

Écrous de raccord



# COUPLING NUTS

For joining lengths of threaded rod end to end.

**Right-hand and Left-hand Threads  
Coarse and Fine Threads**



Used by plumbers, electricians, contractors, to join lengths of SPAENAUR threaded rod, end to end.

For mounting heaters, fans, lighting fixtures; for stringing pipe, conduit, raceways. Solves unusual fastening problems when used with versatile SPAENAUR threaded rods.

## INCH SIZES

### Zinc Plated Steel - RIGHT-HAND Threads

SPAENAUR No.	Size & Threads Per Inch	Width Across Flats	Length	PKG QTY.
155-301	10-24 UNC	5/16"	3/4"	50
155-300	10-32 UNF	5/16"	3/4"	50
155-302	1/4"-20 UNC	7/16"	7/8"	50
155-359	1/4"-28 UNF	3/8"	7/8"	50
155-303	5/16"-18 UNC	1/2"	1-3/4"	25
155-376	5/16"-18 UNC	5/8"	1-3/4"	25
155-360	5/16"-24 UNF	7/16"	7/8"	25
155-304	3/8"-16 UNC	9/16"	1-3/4"	25
155-361	3/8"-24 UNF	1/2"	1-1/8"	25
155-362	3/8"-24 UNF	5/8"	1-3/4"	25
155-305	7/16"-14 UNC	5/8"	1-3/4"	25
155-363	7/16"-20 UNF	5/8"	1-1/4"	25
155-381	1/2"-13 UNC	11/16"	1-3/4"	25
155-306	1/2"-13 UNC	3/4"	1-3/4"	25
155-364	1/2"-20 UNF	5/8"	1-1/4"	25
155-365	1/2"-20 UNF	11/16"	1-3/4"	25
155-377	5/8"-11 UNC	13/16"	2-1/8"	15
155-307	5/8"-11 UNC	15/16"	2-1/8"	15
155-366	5/8"-18 UNF	13/16"	2-1/8"	15
155-024	3/4"-10 UNC	1"	2-1/4"	15
155-308	3/4"-10 UNC	1-1/8"	2-1/4"	15
155-367	3/4"-16 UNF	1"	2-1/4"	15
155-309	7/8"-9 UNC	1-1/4"	2-1/2"	10
155-368	7/8"-14 UNF	1-1/4"	2-1/2"	10
155-310	1"-8 UNC	1-1/4"	2-1/2"	10
155-369	1"-14 UNF	1-3/8"	2-3/4"	10
155-311	1-1/8"-7 UNC	1-5/8"	3"	10
155-312	1-1/4"-7 UNC	1-5/8"	3"	1
155-370	1-1/4"-12 UNF	1-5/8"	3"	1
155-341	1-1/2"-6 UNC	2"	4"	1
155-371	1-1/2"-12 UNF	2"	3-1/2"	1

### 18-8 STAINLESS STEEL - Right-hand Threads

SPAENAUR No.	Size & Threads Per Inch	Width Across Flats	Length	PKG QTY.
155-P37-1M	1/4"-20 UNC	3/8"	7/8"	50
155-801	5/16"-18 UNC	7/16"	1"	25
155-P43-1Y	3/8"-16 UNC	1/2"	1-1/8"	25
155-P35-1K	1/2"-13 UNC	5/8"	1-1/4"	25
155-804	5/8"-11 UNC	7/8"	1-3/4"	10
155-805	3/4"-10 UNC	1"	2-1/4"	10

### Zinc Plated Steel - LEFT-HAND Threads

SPAENAUR No.	Size & Threads Per Inch	Width Across Flats	Length	PKG QTY.
155-351	3/8"-16 UNC	5/8"	1-3/4"	25
155-352	1/2"-13 UNC	11/16"	1-3/4"	25
155-353	5/8"-11 UNC	13/16"	2-1/8"	15
155-354	3/4"-10 UNC	1"	2-1/4"	15

**Inch Size Coupling Nuts  
are used with Threaded Rods  
on pages B286, B287 and B290.**

**Metric Coupling Nuts  
are found on page B293**

Threaded Rods

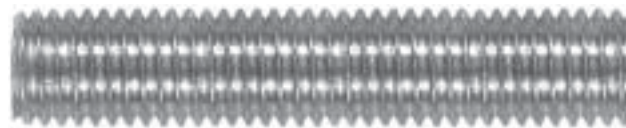
Metric

Tiges filetées

Métrique

**DIN 975**

Standard Coarse Thread  
Right Hand Threads - Full Length



**Property Class 4.6 and 8.8 Steel  
Plain and Zinc Plated**

B

Size Dia. x Pitch mm	CLASS 4.6 PLAIN			CLASS 4.6 ZINC PLATED		CLASS 8.8 1 Metre Lengths	
	1 Metre Lengths	2 Metre Lengths	3 Metre Lengths	1 Metre Lengths	2 Metre Lengths	Plain	Zinc Plated
M2 x 0.40 M2.5 x 0.45 M2.6 x 0.45	867-001 867-026 867-003			867-001ZP 867-026ZP 867-003ZP			
M3 x 0.50 M3.5 x 0.60 M4 x 0.70 M5 x 0.80	867-004 867-028 867-005 867-006		867-042 867-043 867-044	867-004ZP 867-028ZP 867-005ZP 867-006ZP		867-102 867-103	867-102ZP 867-103ZP
M6 x 1.00 M7 x 1.00 M8 x 1.25 M10 x 1.50	867-007 867-027 867-008 867-009	867-035 867-036 867-037	867-045 867-046 867-047	867-007ZP 867-027ZP 867-008ZP 867-009ZP	867-035ZP 867-036ZP 867-037ZP	867-A01-1M 867-105 867-106	867-104ZP 867-105ZP 867-106ZP
M12 x 1.75 M14 x 2.00 M16 x 2.00 M18 x 2.50	867-010 867-011 867-012 867-013	867-038 867-068 867-039	867-048 867-049 867-050 867-051	867-010ZP 867-011ZP 867-012ZP 867-013ZP	867-038ZP 867-039ZP	867-107 867-101 867-109 867-100	867-107ZP 867-101ZP 867-109ZP 867-100ZP
M20 x 2.50 M22 x 2.50 M24 x 3.00 M27 x 3.00	867-014 867-015 867-016 867-017	867-040 867-041	867-052 867-053 867-054	867-014ZP 867-015ZP 867-016ZP 867-017ZP	867-040ZP	867-111 867-112 867-113 867-114	867-111ZP 867-112ZP 867-113ZP 867-114ZP
M30 x 3.50 M33 x 3.50 M36 x 4.00 M39 x 4.00	867-018 867-019 867-020 867-021			867-018ZP 867-019ZP 867-020ZP 867-021ZP		867-115 867-116 867-117	867-115ZP 867-117ZP
M42 x 4.50 M45 x 4.50 M48 x 5.00 M52 x 5.00	867-022 867-023 867-024 867-025			867-022ZP 867-024ZP			

**DIN 975**

**METRIC FINE THREAD**

Right Hand Thread - Full Length

Property Class 4.6 Steel, Plain

1 Metre Lengths

SPAENAUR No.	Dia. x Pitch	SPAENAUR No.	Dia. x Pitch
867-069	M4 x 0.50	867-075	M12 x 1.25
867-070	M5 x 0.50	867-076	M12 x 1.50
867-071	M6 x 0.75	867-077	M14 x 1.50
867-072	M8 x 1.00	867-078	M16 x 1.50
867-073	M10 x 1.00	867-079	M18 x 1.50
867-074	M10 x 1.25	867-080	M20 x 1.50

**METRIC LEFT-HAND THREAD**

Standard Coarse Thread - Full Length

Property Class 4.6 Steel, Plain

1 Metre Lengths

SPAENAUR No.	Dia. x Pitch	SPAENAUR No.	Dia. x Pitch
867-055	M4 x 0.70	867-061	M14 x 2.00
867-056	M5 x 0.80	867-062	M16 x 2.00
867-057	M6 x 1.00	867-063	M18 x 2.50
867-058	M8 x 1.25	867-064	M20 x 2.50
867-059	M10 x 1.50	867-065	M24 x 3.00
867-060	M12 x 1.75		

**B292**

Metric

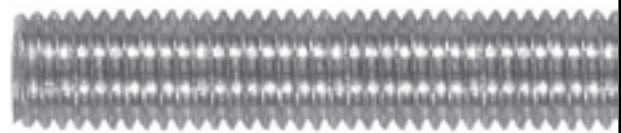
Threaded Rods / Coupling Nuts

Métrique

Tiges filetées / Écrous de raccord

**DIN 975**

Metric Standard Coarse Thread  
Right-Hand - Full Length



**Brass, A2 & A4 Stainless Steel,  
Aluminum and Nylon**

Contact Sales Desk For Package Quantities

Size Dia. x Pitch mm	BRASS 1 Metre Lengths	A2 STAINLESS STEEL			A4 STAINLESS STEEL		ALUMINUM 1 Metre Lengths	6/6 NYLON 1 Metre Lengths
		1 Metre Lengths	2 Metre Lengths	3 Metre Lengths	1 Metre Lengths	3 Metre Lengths		
M2 x 0.40 M2.3 x 0.40 M2.5 x 0.45 M2.6 x 0.45	869-001 869-002 869-013 869-003	871-030			871-050  871-051			
M3 x 0.50 M4 x 0.70 M5 x 0.80	869-004 869-005 869-006	871-004 871-005 871-006	871-038		871-017 871-018 871-019		863-100 863-101 863-102	873-004 873-005 873-006
M6 x 1.00 M8 x 1.25 M10 x 1.50	869-007 869-008 869-009	871-007 871-008 871-009	871-039 871-040 871-041	871-043 871-044 871-045	871-020 871-021 871-A01-1A	871-056 871-057 871-058	863-103 863-104 863-105	873-007 873-B01-1C 873-009
M12 x 1.75 M14 x 2.00 M16 x 2.00 M18 x 2.50	869-010 869-011 869-012 869-015	871-010 871-011 871-012 871-013	871-042	871-046  871-047	871-023 871-024 871-025 871-026	871-059  871-060	863-106  863-107	873-010 873-011 873-012 873-013
M20 x 2.50 M22 x 2.50 M24 x 3.00 M27 x 3.00	869-016  869-018 869-019	871-014 871-015 871-016 871-034		871-048  871-049	871-027 871-028 871-029 871-052	871-061  871-062		873-014
M30 x 3.50 M33 x 3.50 M36 x 4.00	869-020 869-021 869-022	871-035 871-036 871-037			871-053 871-054 871-055			

**B**

Metric Sizes  
**COUPLING NUTS**  
ZINC PLATED STEEL  
Regular (Coarse) Thread

**COUPLING NUTS** **DIN 6334**  
Regular (Coarse) Thread  
STEEL, PLAIN and ZINC PLATED

SPAENAUR No.	Dimensions in Millimeters				PKG QTY.	SPAENAUR No.		Dimensions in Millimeters				PKG QTY.
	Thread Size Diameter	Pitch	Width A/F	Length		Plain	Zinc Plated	Thread Size Diameter	Pitch	Width A/F	Length	
156-202	M8	1.25	15	44	50		156-344ZP	M6	1.00	10	18	50
156-F01-1W	M10	1.50	15	44	25	156-345	156-345ZP	M8	1.25	13	24	50
156-211	M27	3.00	41	76	10	156-352	156-352ZP	M10	1.50	17	30	25
						156-346	156-346ZP	M12	1.75	19	36	25
						156-347	156-347ZP	M16	2.00	24	48	25
						156-348	156-348ZP	M20	2.50	30	60	10
						156-349	156-349ZP	M24	3.00	36	72	10
						156-350	156-350ZP	M30	3.50	46	90	5
						156-351	156-351ZP	M36	4.00	55	108	5



CATALOG 14 SPAENAUR