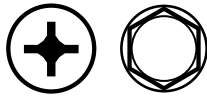


Inch

Pouce



Thread Rolling Screws - Phillips Drive / Hex Head

Vis autoformeuses – tête cruciforme / hexagonale

High-Performance Thread-Rolling Screws roll-form a clean, strong thread, yet these screws do not cut metal, and leave no chips. Excellent for use in electrical assemblies where chips would cause shorts, or in deep blind holes where chips would prevent proper seating. May also be used in thin sheet metal where thread-cutting action would weaken the walls of punch-extruded holes.

High-Performance Thread-Rolling Screws drive easier than other thread-forming screws, and with uniform torque. You can drive them into tougher material, deeper holes, and faster, with less tool wear. They are self-locking and vibration-resistant along the entire length of the thread.

High-Performance Thread-Rolling Screws

Case-Hardened Steel, Zinc Plated & Waxed

Phillips Pan Head

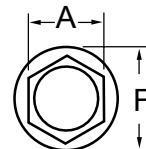


DIA.	4	6	8	10	1/4"
THREAD	40	32	32	32	20
LENGTH	ORDER BY SPAENAUR NUMBERS LISTED BELOW				
1/4"	492-C36-1M	492-C23-1W		492-111	
5/16"	492-101				
3/8"	492-102	492-C28-2Y	492-C05-1C	492-112	492-116
1/2"	492-103	492-106	492-108	492-113	492-117
5/8"			492-109	492-114	492-118
3/4"			492-110	492-115	492-119
1"					492-120

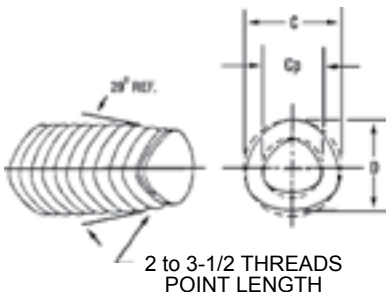
Indented Hex Washer Head



DIA.	4	6	8	10	1/4"	5/16"
THREAD	40	32	32	32	20	18
LENGTH	ORDER BY SPAENAUR NUMBERS LISTED BELOW					
1/4"	491-100	491-104				
5/16"	491-101					
3/8"	491-P18-1A	491-P20-1A	491-P11-1C	491-111	491-P30-1M	
1/2"	491-103	491-106	491-P19-1P	491-112	491-116	491-005
5/8"			491-109	491-113	491-117	
3/4"			491-110	491-114	491-P15-1W	
1"					491-119	



Specifications: Thread and Point Indented Hex Washer Head



Nominal Screw Size	Threads Per Inch	Basic Screw Diameter	C Diameter of Circumscribing Centre		D Measurement Across Centre		CP Circumscribing Circle (Point)
			Max.	Min.	Max.	Min.	Max.
4	40	0.1120	0.1145	0.1105	0.1095	0.1055	0.090
6	32	0.1380	0.1410	0.1350	0.1350	0.1290	0.111
8	32	0.1640	0.1670	0.1610	0.1610	0.1550	0.137
10	32	0.1900	0.1940	0.1880	0.1850	0.1790	0.153
1/4"	20	0.250	0.2550	0.2490	0.2460	0.2400	0.206

Nominal Size	A Width Across Flats		F Diameter of Washer	
	Max.	Min.	Max.	Min.
4	.187	.181	.243	.225
6	.250	.244	.328	.302
8	.250	.244	.348	.322
10	.312	.305	.414	.384
1/4"	.375	.367	.520	.480

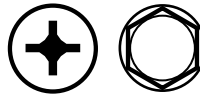
See next page for recommended pilot hole sizes.

PKG QTY. 100 - All items on this page

B

Recommended Pilot Hole Sizes

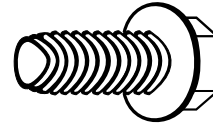
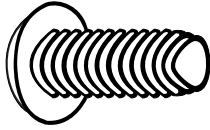
Tailles de trou de pilote recommandées



Inch

Pouce

**RECOMMENDED PILOT HOLE SIZES for
LOW CARBON STEEL
and
ALUMINUM SHEETS.**



B

SCREW SIZE	MATERIAL	MATERIAL THICKNESS														
		.020" - .078"			.063" - .140"			.125" - .266"			.250" - .328"			.313" - .500"		
		DRILL SIZE	DECI-MAL	% THRD. ENGAGE	DRILL SIZE	DECI-MAL	% THRD. ENGAGE	DRILL SIZE	DECI-MAL	% THRD. ENGAGE	DRILL SIZE	DECI-MAL	% THRD. ENGAGE	DRILL SIZE	DECI-MAL	% THRD. ENGAGE
4-40	Steel	40	.098	85	38	.120	65	37	.104	50						
	Aluminum	40	.098	85	39	.100	75	38	.102	65	38	.102	65			
5-40	Steel	34	.111	85	33	.113	75	32	.116	55						
	Aluminum	35	.110	90	34	.111	85	33	.113	75	33	.113	75	32	.116	55
6-32	Steel				31	.120	90	1/8	.125	65	30	.129	50			
	Aluminum	31	.120	90	31	.120	90	1/8	.125	65	1/8	.125	65	1/8	.125	65
8-32	Steel				26	.147	85	25	.150	70	23	.154	50			
	Aluminum				26	.147	85	25	.150	70	24	.152	60	24	.152	60
10-24	Steel				19	.166	90	11/64	.172	70	16	.177	50			
	Aluminum				19	.166	90	19	.166	90	18	.170	75	17	.173	65
10-32	Steel				17	.173	85	16	.177	65	15	.180	50			
	Aluminum				17	.173	85	17	.173	85	16	.177	65	15	.180	50
12-24	Steel				10	.194	80	8	.199	65	13/64	.203	50			
	Aluminum				11	.191	90	9	.196	75	8	.199	65	13/64	.203	50
1/4-20	Steel				7/32	.219	95	5.7M	.224	80	1	.228	70	A	.234	50
	Aluminum				7/32	.219	95	2	.221	90	5.7M	.224	80	1	.228	70
5/16-18	Steel				K	.281	85	K	.281	85	7.25M	.285	75	L	.290	60
	Aluminum				K	.281	85	K	.281	85	7.25M	.285	75	7.3M	.287	70
3/8-16	Steel							11/32	.344	75	S	.348	65	9M	.355	50
	Aluminum							R	.339	90	11/32	.344	75	S	.348	65

PLASTIKIT 1140
«PLASTIKIT»

MACHINE SCREWS WITH HEXAGON NUTS
Steel, Zinc Plated
Round Slot Head
25 Sizes - 159 Pieces

Handy size, hinged lid and positive clasp
1" x 2-3/4" x 4-1/2"



Name	Head Type	Spenaaur No.	Thread Size	Screw Length	Qty.	Page	
Machine Screw Slot Drive Steel ASME/ANSI B18.6.3	Round	380-F10-1N	#4-40	3/8"	6	B6	
		380-F53-1X		1"			
		786	#6-32	5/16"	12		
		786A		1"			
		785	#8-32	1/2"	10		B7
		1042		3/4"			
		B-1500		1"			
		380-F83-1C		1-1/2"			
		1484	#10-24	7/8"	8	B8	
		1027					
		1028	#10-32	1/2"	6		
		801-A		1-1/2"			
		1032	#12-24	1/2"	2	B8	
		1153		3/4"			
		380-F07-1C		7/8"			
		775		1/2"			
		1467	1/4"-20	3/4"	1	B9	
		871		1"			
380-F08-1N	1-1/4"						
Hex Nut Machine Screw Steel Zinc Plated		155-P11-1K	#4-40	5	10	C2	
		155-P03-2A	#6-32				
		155-P04-1P	#8-32	18			
		155-P08-1T	#10-24	8	B273 C2		
		155-P02-1X	#10-32	10	C2		
		155-P22-1T	#12-24	6			

CATALOG 14

SPAENAUR