

Support Stays

Inch

Bras de support

Pouce

**099-184** (Mfr. # 7/25122)  
(with brackets)



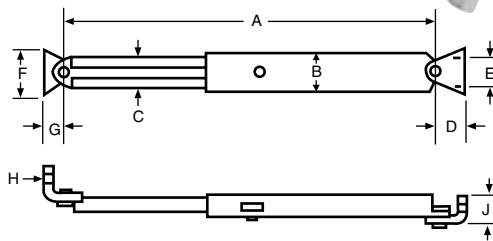
**099-B07-1M** (Mfr. # 7/26596)  
(without brackets)

PKG QTY. 1

“Miniature” Support Stays

These stays are smaller versions, and suit a variety of top and side-opening cabinets, instrument boxes, etc. The stays lock in open position by means of a “Star-Wheel” design, and are released by slight further extension.

**Material:** STEEL **Finish:** ZINC PLATED

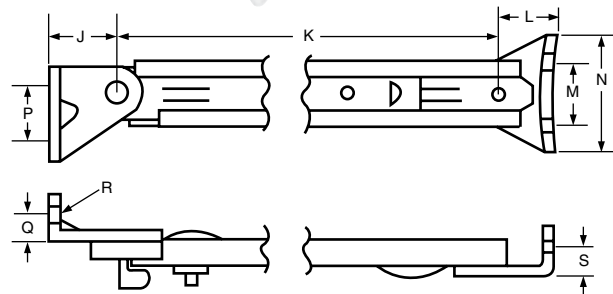


- A. Length closed 6" open 9.4"
- B. Width (outer) 0.75"
- C. Width (inner) 0.67"
- D. Location 0.65"
- E. Hole centres 0.5"
- F. Hole centres 0.5"
- G. Location 0.65"
- H. Hole dimensions 0.138" dia.
- J. Brackets Height 0.5"



**Note:** Safety catch fitted to this type of stay.

**099-185** (Mfr. # 7/25621)  
(with brackets)  
PKG QTY. 1



- J. Location 0.9"
- K. Length closed 11.2" open 18.5"
- L. Location 0.9"
- M. Hole centres 1.25"
- N. Width (bracket) 2.0"
- P. Hole centres 0.75"
- Q. Location 0.35"
- R. Hole dimensions 0.197" dia.
- S. Location 0.5"

This stay incorporates a safety catch. To operate, the stay is extended slightly, and the catch released by hand. There are brackets at each end, pivoting freely, and these are individually shaped. Length between fixing centres is 11.2" (closed), 18.5" (open) - not including brackets.

**Material:** STEEL **Finish:** CLEAR or YELLOW ZINC — our option

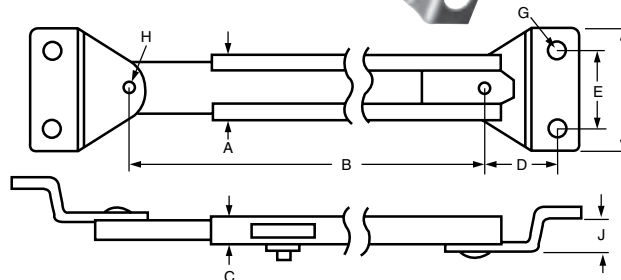


**099-186** (Mfr. # 7/03098)  
(with brackets)  
PKG QTY. 1

A basic but extremely popular design with “draw” of 8-1/2" approx., and identical brackets at each end which can swivel freely. The stay locks in the extended position by means of a “Star-Wheel” design, and a further slight extension then frees the mechanism and allows the unit to be closed.

Length between fixing centres is 11.4" (closed), 19.5" (open) - not including brackets.

**Material:** STEEL **Finish:** CLEAR or YELLOW ZINC — our option



- A. Width (outer) 1.0"
- B. Length closed 11.4" open 19.5"
- C. Height (outer) 0.43"
- D. Location 1.1"
- E. Hole centres 1.378"
- F. Width (bracket) 2.25"
- G. Hole dimensions 0.354" dia.
- H. Hole dimension 0.236" dia.
- J. Bracket Height 0.55"