

**Snap-In Hole Plugs**

Inch

**Bouchons enfichables**

Pouce

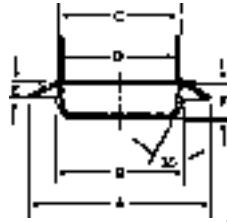
**Type 1**, Flush front.  
**Type 2**, Recessed front.

Snap-In Plugs are tough, flexible "finishing" plugs used extensively in all sheet metal work to seal access holes. Insertion is a snap, bead retention is strong. Snap-In Plugs are used by auto rustproofers, on refrigeration units, water heaters, steel doors, paint cans, lawn mowers...even piggy banks!

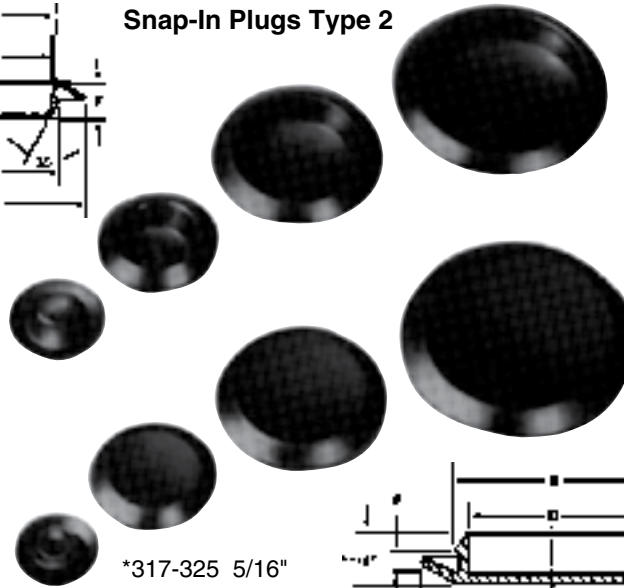
To fit 14 to 26 gauge material.

**Colour:** Black

**Material:** Low Density  
 POLYETHYLENE



**Snap-In Plugs Type 2**



\*317-325 5/16"  
 \*317-326 1/2"



**Snap-In Plugs Type 1**

**Snap-In Plugs**

	SPAENAUR No.	HOLE SIZE	DIMENSIONS						PKG QTY.
			A	B	C	D	E	F	
<b>Type 1</b> ▲ (White)	317-W42-1K	3/8"	3/4"	.410"	.375"	.305"	.090"	.125"	100
	317-309	1/2"	7/8"	.540"	.500"	.400"	.110"	.090"	100
	317-310	5/8"	13/16"	.675"	.625"	.545"	.140"	.080"	100
	317-311	11/16"	1-1/16"	.710"	.680"	.556"	.094"	.094"	100
	317-312	3/4"	1"	.790"	.750"	.625"	.100"	.090"	100
	▲317-313	7/8"	1-5/32"	.910"	.875"	.750"	.100"	.090"	50
	317-314	1"	1-3/8"	1.070"	1.010"	.875"	.110"	.094"	50
	317-315	1-3/32"	1-5/16"	1.150"	1.090"	1.000"	.125"	.080"	50
	317-316	1-3/16"	1-9/16"	1.240"	1.200"	1.050"	.100"	.100"	50
	317-317	1-1/4"	1-5/8"	1.290"	1.250"	1.125"	.110"	.090"	50
	317-318	1-1/2"	1-7/8"	1.540"	1.500"	1.400"	.110"	.090"	25
	317-319	1-3/4"	2-1/8"	1.790"	1.750"	1.620"	.105"	.094"	25
	317-320	2"	2-7/16"	2.080"	2.020"	1.875"	.100"	.094"	25
	317-321	2-1/2"	3"	2.580"	2.520"	2.375"	.100"	.094"	25
	317-322	2-5/8"	3-1/8"	2.705"	2.645"	2.500"	.100"	.094"	10
317-323	3"	3-3/8"	3.060"	3.000"	2.850"	.110"	.090"	10	
*317-325	4"	4-1/2"	4.100"	4.020"	3.900"	.150"	.080"	5	
*317-326	4"	4-1/2"	4.100"	4.020"	3.900"	.090"	.340"	5	
<b>Type 2</b> ■317-519 (Orange)	■317-327	1/2"	7/8"	.538"	.500"	.430"	.125"	.285"	100
	317-328	3/4"	1-5/32"	.800"	.750"	.660"	.170"	.360"	50
	317-520	7/8"	1-1/4"	.915"	.875"	.795"	.155"	.350"	50
	317-329	1"	1-3/8"	1.050"	1.000"	.930"	.160"	.350"	50
	317-330	1-1/4"	1-5/8"	1.308"	1.250"	1.170"	.140"	.350"	50
	317-331	1-1/2"	1-7/8"	1.550"	1.500"	1.420"	.150"	.370"	25
	317-332	1-3/4"	2-1/8"	1.800"	1.750"	1.670"	.160"	.350"	25
	317-333	2"	2-3/8"	2.050"	2.000"	1.910"	.180"	.360"	25
317-334	2-1/2"	3"	2.570"	2.500"	2.400"	.160"	.380"	10	
317-335	3"	3-1/2"	3.060"	3.000"	2.910"	.190"	.410"	10	

J

CATALOG 14

SPAENAUR

Inch

**Snap-In Hole Plugs**

Pouce

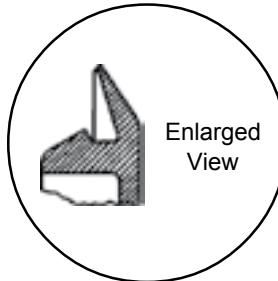
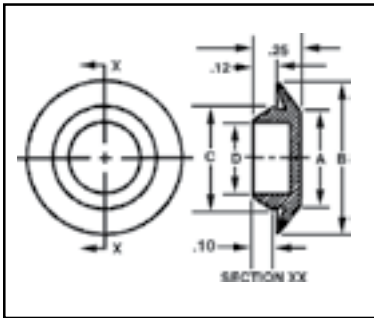
**Bouchons enfichables**

# FLUSH TYPE HEAD STYLE

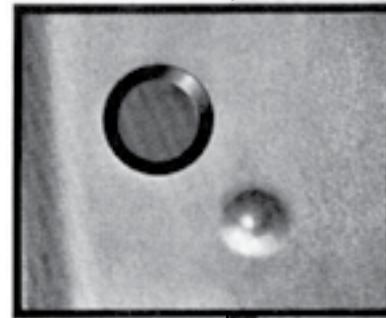
**MATERIAL:** Polyethylene (Black)  
Conforms to Fed. Spec. L-P-390

Used for plugging holes in equipment made of sheet metal such as automobile bodies, tanks, refrigeration units, etc.

Note: These plug buttons are impervious to solvents, sterilizing agents, caustic and acid baths and are vermin and fungus proof. They will not chip, break or shred under most severe conditions and will retain form stability, under stress, at temperatures ranging from **-70°C up to +79.4°C**.

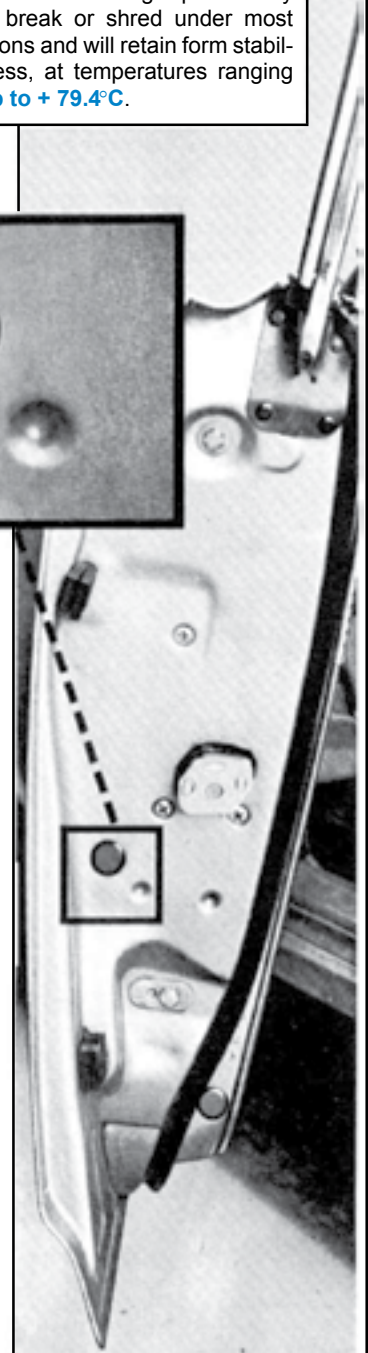


FLUSH TYPE HEADS



**SPAENAUR** Plastic Plug Buttons can be snapped into holes easily and are held in place by a bead until deliberately removed.

SPAENAUR No.	Nom. Hole Size	Dimensions—Inches				To Fit	
		A	B	C	D	Hole Size	Metal Thickness
245-003	3/8"	.38	.75	.41	.31	.370-.380	.02-.06
245-004	1/2"	.50	.86	.54	.42	.490-.515	.03-.08
245-005	5/8"	.62	.81	.67	.54	.610-.635	.06-.08
245-006	3/4"	.75	1.01	.79	.63	.735-.765	.05-.11
245-007	7/8"	.87	1.16	.91	.73	.860-.885	.03-.08
245-W02-1P	15/16"	.94	1.31	.98	.78	.922-.955	.03-.08
245-009	1"	1.00	1.37	1.04	.84	.980-1.015	.03-.08
245-010	1-3/16"	1.20	1.56	1.24	1.05	1.176-1.215	.03-.08
245-011	1-1/4"	1.25	1.62	1.29	1.09	1.225-1.265	.03-.08
245-012	1-5/16"	1.32	1.68	1.36	1.16	1.295-1.330	.03-.08
245-013	1-3/4"	1.75	2.13	1.79	1.61	1.735-1.765	.03-.08
245-014	2-1/8"	2.13	2.49	2.17	1.97	2.105-2.145	.03-.08
245-015	3"	3.00	3.36	3.06	2.84	2.975-3.025	.03-.08
245-016	3-1/8"	3.12	3.52	3.18	2.96	3.100-3.150	.03-.08
245-017	3-1/2"	3.50	3.86	3.56	3.34	3.475-3.525	.03-.11
245-018	4"	4.01	4.37	4.13	3.85	3.975-4.025	.05-.13



J

Contact Sales Desk For Package Quantities

SEE PAGES F3, H2-H4, J2, J3 and J36

FOR MORE METALLIC, NYLON  
AND PLASTIC PLUG BUTTONS.

For a reference chart on Plastics Properties see page R20.

# Snap-In Hole Plugs / Vent Plugs & Assortments

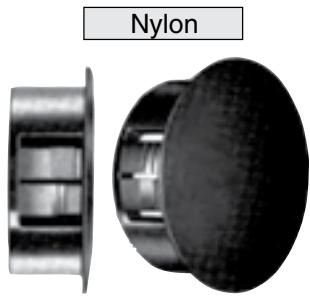
Inch

## Bouchons enfichables / Bouchons d'aération et assortiments

Pouce

### Hole Plugs and Vent Plugs

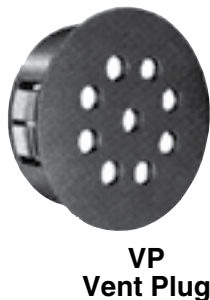
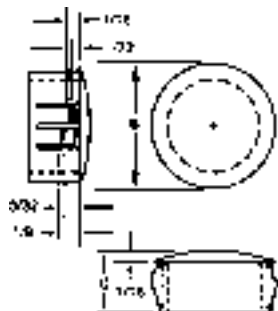
These will close your unneeded chassis holes quickly, easily and at low cost. Nylon material makes them suitable for use at elevated temperatures. 24 sizes for use in 3/16" to 3" diameter holes are available. They lock firmly in chassis up to 1/4" thick. The convex matte finish head tapers to a thin edge and assures good appearance. Three sizes are also available with holes in their head for ventilation.



Nylon

DP HOLE PLUG

▲ 245-066 (Beige)



VP Vent Plug

Mounting Hole Dia. up to 4" available on DP and VP type. Price on Request.

For 7/8", 1" and 2-1/2" holes.

Maximum Thickness	Mounting Hole Diameter	SPAENAUR No.			PKG QTY.	Type	PART DIMENSIONS	
		BLACK	WHITE	B Head Diameter			C Overall Height	
.062"	.187"	245-019	245-042	100	DP	1/4"	15/64"	
	.250"	245-W06-1T	245-041	100	DP	5/16"	5/16"	
	.312"	245-021	245-043	100	DP	3/8"		
.125"	.375"	245-H05-1X	245-022	100	DP	15/32"	13/32"	
	.437"	245-049	245-023	100	DP	17/32"		
	.500"	245-044	245-024	100	DP	37/64"		
	.562"	245-047	245-025	100	DP	21/32"		
	.625"	245-W07-1K	245-H03-1W	100	DP	23/32"		
	.687"	245-027		100	DP	25/32"		
	.750"	245-W12-1X	245-W10-1W	100	DP	59/64"		
	.812"	245-029		100	DP	57/64"		
	.875"	245-W11-1M	245-048	100	DP	1-1/64"		29/64"
		245-W05-1T		100	VP			
	1.000"	245-046	245-H01-1T	100	DP	1-13/64"		
		245-033	245-060	100	VP			
1.093" to 1.125"	1.093"	245-034		100	DP	1-7/32"	29/64"	
	1.125"	245-035		50	DP	1-5/16"		
	1.187"	245-035		50	DP	1-3/8"		
	1.250"	245-058	245-036	50	DP	1-1/2"		
	1.375"	245-037		50	DP	1-43/64"		
	1.500"	245-038	245-062	50	DP	1-29/32"		
	1.750"	245-039	245-050	50	DP	2-9/64"		
	2.000"	245-054	245-040	25	DP			
.250"	2.093" to 2.125"	245-059		10	DP	2.343"	3/4"	
	2.500"	245-051	245-052	10	DP	2.775"		
	2.500"		245-061	10	VP	2-23/32"		
	2.500"			10	DP	3-11/64"		
	3.000"	245-057		10	DP			

See pages F4, H2-H4 for Metallic types

See page J2 and J3 for more Nylon Plug Buttons.

**ASSORTMENT 805-627**

### Nylon Hole & Vent Plugs HOLE PLUG & BUSHING

22 SIZES - 475 PIECES

Large Size Grey Enamelled Drawer Fits the Slide Racks shown on Page A3  
Shipping weight **3.85 kg** (8.5 lbs.)



Panel Thickness Range	Spaenaur No.	Mounting Hole Size	Head Diameter	Colour	Qty.	
0.062"	245-019	0.187"	1/4"	Black	50	
	245-W06-1T	0.250"	5/16"			
	245-021	0.312"	3/8"			
0.125"	245-022	0.375"	15/32"	White	40	
	245-023	0.437"	17/32"			
	245-024	0.500"	37/64"			
	245-025	0.562"	21/32"			
	245-H03-1W	0.625"	23/32"			
	245-027	0.687"	25/32"			Black
	245-028	0.750"	59/64"	White		
	245-029	0.812"	57/64"		15	
	245-030	0.875"	1-1/64"	Black		
	0.125"	245-W05-1T	0.875"	1-1/64"	White	10
		245-032	1.000"	1-13/64"		
		245-033	1.000"	1-13/64"	Black	
		245-034	1.093"	1-7/32"		6
		245-035	1.187"	1-5/16"		
		245-036	1.250"	1-3/8"	White	5
		245-037	1.375"	1-1/2"		
245-038		1.500"	1-43/64"	Black		
245-039		1.750"	1-29/32"			
245-040		2.000"	2-9/64"	White	4	