

Inch

Spacers / Female Standoffs


Pouce



Entretroises / Female Standoffs

# ALUMINUM SPACERS

Aluminum Alloy 2011T3 • Plain Finish



All items on this page PKG Qty. 50		3/16" O.D.		1/4" O.D.			5/16" O.D.
<b>ROUND TUBULAR</b> (Not tapped)  	INSIDE DIA.	No.2 (.093")	No.4 (.115")	No.4 (.115")	No.6 (.140")	No.8 (.171")	No.10 (.192")
	LENGTH						
	.125"	608-168	608-016	608-031	608-046	608-061	608-076
	.187"	608-169	608-017	608-032	608-047	608-062	608-077
	.250"	608-170	608-018	608-033	608-048	608-063	608-078
	.312"	608-171	608-019	608-034	608-049	608-D02-1P	608-079
	.375"	608-005	608-020	608-035	608-050	608-065	608-080
	.437"	608-006	608-021	608-036	608-051	608-066	608-081
	.500"	608-007	608-022	608-037	608-052	608-067	608-082
	.562"	608-008	608-023	608-038	608-053	608-068	608-083
.625"	608-009	608-024	608-039	608-054	608-069	608-084	
.687"	608-010	608-025	608-040	608-055	608-070	608-085	
.750"	608-D04-1C	608-026	608-041	608-056	608-071	608-086	
.812"	608-012	608-027	608-042	608-057	608-072	608-087	
.875"	608-013	608-028	608-043	608-058	608-073	608-088	
.937"	608-014	608-029	608-044	608-059	608-074	608-089	
1.000"	608-015	608-030	608-045	608-060	608-075	608-D01-1A	
1.500"				608-196			

<b>ROUND THREADED</b>  	LENGTH	1/4" O.D.			5/16" O.D.	 <b>HEX THREADED</b> 1/4" O.D. ( Across Flats ) Round and hex threaded spacers are tapped through on lengths up to 1". Over 1" lengths are tapped 3/8" from each end or through, at our option.
		THREAD SIZE				
		4-40	6-32	8-32	10-32	
.125"	608-091	608-101	608-111	608-121	608-122	
.187"					608-123	
.250"	608-092	608-102	608-112	608-124	608-125	
.312"				608-126	608-127	
.375"	608-093	608-103	608-113	608-128	608-129	
.437"				608-130	608-131	
.500"	608-094	608-104	608-114	608-132	608-133	
.562"				608-134	608-135	
.625"	608-095	608-105	608-115	608-136	608-137	
.687"				608-138	608-139	
.750"	608-096	608-106	608-116	608-D03-1Y	608-140	
.875"	608-097	608-107	608-117		608-141	
1.000"	608-098	608-108	608-118		608-142	
1.250"	608-099	608-109	608-119		608-143	
1.500"	608-100	608-110	608-120			

Normal Commercial Tolerance, all sizes.

▲ Threads not subject to normal gauging.

CATALOG 14 SPAENAUR

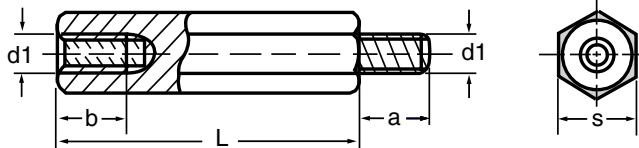
Self-Clinching Standoffs / Female-Male Standoffs

Metric

Colonnets à sertir / Colonnets mâles-femelles

Métrique

**METRIC Threaded Hex Spacers with Internal and External Thread STEEL and BRASS**



All dimensions in millimetres.

\*Threaded length may be less.

SPAENAUR No.	L Spacer Body Length	d1 Thread Dia. x Pitch	Thread Length		S Across Flats (tol. h11)	Material and Finish	PKG QTY.
			a (±0.2)	b			
607-600	8 mm	M3 x 0.5 mm	5 mm	*6 mm	5.5 mm	STEEL, Zinc Plated	25
607-H93-1T	10 mm	M4 x 0.7 mm	6 mm	*7 mm	7.0 mm	STEEL, Zinc Plated	25
607-602	20 mm	M4 x 0.7 mm	6 mm	7 mm	7.0 mm	STEEL, Zinc Plated	25
605-036	15 mm	M4 x 0.7 mm	10 mm	10 mm	6.5 mm	BRASS, Nickel Pltd.	25

**Stainless Steel**

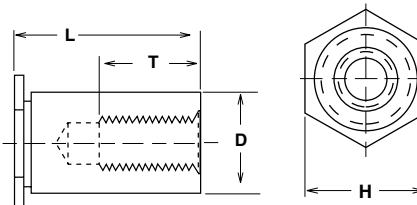
**MATERIALS:**

Carbon Steel, Heat Treated, Zinc or Cadmium Plated per QQ-P-416, Type I, Class 3.

300 Series Stainless Steel, Passivated, QQ-P-35, Type I.

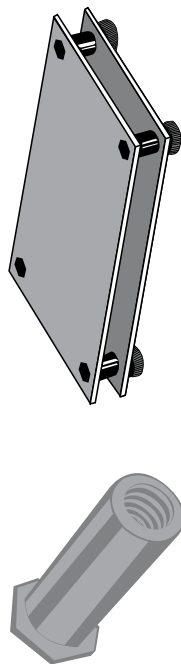
**THREAD:** Class 6H 1SO Metric

"D" Dimension	"A" Hole in Anvil
4.19 mm	4.3 mm
5.38 mm	5.5 mm
7.11 mm	7.2 mm



G

**Blind Thread Style**



Metric Blind Thread Style				PKG QTY. 100	
THREAD SIZE		M3	M3		M4
PANEL HOLE CODE SIZE		4.20 mm	5.40 mm		7.20 mm
D		4.19 mm	5.38 mm		7.11 mm
H		4.8 mm	6.4 mm		7.9 mm
MIN. EDGE DISTANCE TO CENTRE OF HOLE		6.0 mm	6.8 mm		8.0 mm
PANEL THICKNESS		1. mm and up			1.3 mm and up
Length L	Dim. T	Kind of Metal			
(mm)	(mm)	Stainless Steel	615-900		
8	4.0	Stainless Steel			*615-909 THROUGH THREAD STYLE
10	4.0	Stainless Steel		♦615-908 THROUGH HEAD STYLE	
12	5.0	Stainless Steel	615-901	615-906	
14	6.5	Stainless Steel	*615-910	*615-904	
16	6.5	Stainless Steel	615-902		
18	9.5	Stainless Steel		615-905	
22	9.5	Stainless Steel		615-907	
INSTALLATION & PERFORMANCE DATA					
INSTALLATION (kN)		6.7 - 8.9	6.7 - 8.9	8.9 - 11.1	
PUSH-OUT (N)		710	890	1780	
TORQUE-OUT (N°M)		1.24	1.35	5.08	
AXIAL PULL-THRU (N)		780	890	2000	
▲TORQUE (N°M)		0.55	0.55	2.0	

▲ Torque Values are for reference only.

See Page G35 for Inch Size Self Clinching Standoffs.