

**Snap Hooks / Pulleys**

Inch

**Crochets à pression / Poulies**

Pouce

**SNAPS**

Cast Brass

Plain Finish

90° Fast Eye



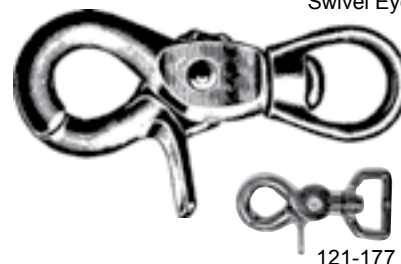
SPAENAUR No.	I.D. of Eye	Length Overall	Ring Size Snap Opening	PKG QTY.
MH-67	5/8"	2-7/8"	5/16"	10
121-025	3/4"	3-7/8"	5/8"	10

**TRIGGER SNAPS**

Swivel Eye

Zinc Die-cast  
or  
Cast Malleable Iron  
- at our option.

Nickel Plated



121-177

SPAENAUR No.	Size of Eye	Length Overall	Ring Size Snap Opening	PKG QTY.
121-179	3/8"	2-3/8"	3/8"	10
121-180	1/2"	2-1/2"	3/8"	10
121-177	3/4" x 1/4"	2-3/8"	3/8"	10
121-181	5/8"	2-3/8"	3/8"	10
121-182	3/4"	2-7/8"	3/8"	10

Our buckles, snaps, hooks and pulleys are manufactured to either Inch or Metric specifications and shown accordingly in our catalog.

By using the Inch/Metric Conversion Chart on page R3 in the back of the Spaenaur catalog, your selection can be expanded by simple conversion to choose from both Inch and Metric items.

The R section also contains information relating to Equivalent Standard Bolt Diameters, Torque Conversion Charts and Tension Loads / Tightening Torques.

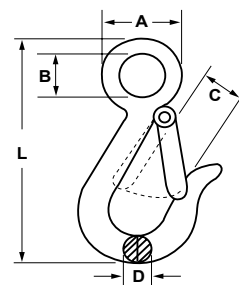
**SAFETY SNAP HOOKS**

Fast Eye



Weldless Drop Forged Steel  
Galvanized Finish

With Stainless Steel Spring and Rivet or Screw and Nut Assembly.



SPAENAUR No.	A	B	C	D	L	Safe Work Ld.	PKG QTY.
121-049	1-1/4"	3/4"	3/4"	7/16"	3-15/16"	750 lbs.	10
121-050	2"	1-1/8"	13/16"	9/16"	4-3/4"	1000 lbs.	5

For trailer winches, etc. Also used on conveyors.

**PULLEY with Swivel Eye**

For 9/32" (7 mm) Rope Dia.

SPAENAUR No.

**121-422**

Body: Die Cast, Nickel Plated  
Roller: Die Cast, Brass Plated

Overall Length: 2-3/8"  
Roller O.D: 1"

PKG QTY. 10



M

Metric

Snap Hooks / Pulleys

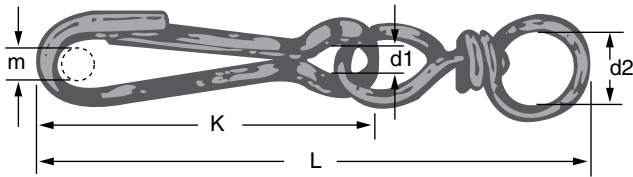
Métrique

Crochets à pression / Poulies

**Snap Hooks of Half Round Steel Wire with Swivel Eye**

**Metric**

Nickel Plated



Dimensions in Millimetres.

SPAENAUR No.	d1	d2	m	K/L	PKG QTY.
121-079	5.5	8	3.5	25/50	100
121-080	6	8	4.5	30/55	100
121-081	6.5	8	5	35/60	100
121-082	7	10	5.5	40/67	100
121-084	9	11	6.5	50/83	50
121-085	10	13	7.5	60/97	50
121-086	11	17	9	70/115	50
121-087	12	17	10	80/123	25
121-088	13	19	10.5	90/140	25

**SPRING SNAP BODY ONLY**  
Stainless Steel, Plain Finish

SPAENAUR No.	d1	d2	m	K	PKG QTY.
121-841	7	-	5.5	40	50

**PULLEYS**

Body: Tough Die Cast Zinc

Roller: Nylon

PKG QTY. 10

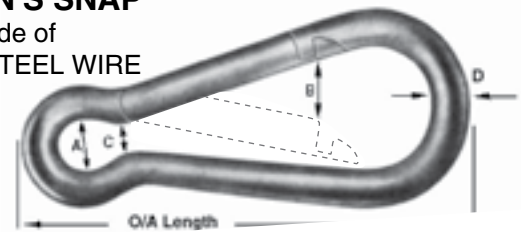


SPAENAUR No.	Roller Dia. mm	Rope Dia. mm	O/A Lgth. mm
121-241	15	5	50
121-240	20	6	60
121-242	25	7	70
121-243	30	8	80

**FIREMAN'S SNAP**

Made of ROUND STEEL WIRE

ZINC PLATED



SPAENAUR No.	Dimensions			O/A Length mm	Dia. D mm	PKG QTY.
	A mm	B mm	C mm			
121-129	8	7	4	50	5	10
121-130	10	8	6	60	6	10
121-244	13	11	9	80	8	10
121-132	13	11	10	90	9	10
121-245	16	12	11	100	10	10
121-246	16	17	12	120	11	10
121-133	20	21	14	140	12	10
121-134	22	28	16	160	13	10
121-135	22	42	16	180	14	5
121-136	26	43	16	200	15	5

For Wire Clamps & Thimbles see Page M55

**THIMBLES**



**MANILLA ROPE THIMBLES**



**WIRE ROPE CLAMPS**



CATALOG 14

SPAENAUR

See page M50 for more Belt Snaps