

Inch and Metric
Pouce et Métrique

On-sert

On-Serts / Applicator Tools
Douilles On-Serts / Outils d'applicateur d'insert fileté



STEEL (With protective finish)

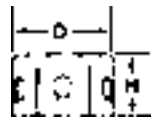
INCH SIZES

These distinctive fasteners, with a single helical thread, slip over hollow plastic bosses and prevent splitting when screws are driven. They also prevent cross-threading, and resist screw pull-out, yet screws may be removed without harming the fasteners or the boss. On-sert fasteners thus perform the same function as solid inserts, but cost only about one-fifth as much. One type is used when screws enter the top of a boss, while another type is used when screws enter the bottom of the boss.

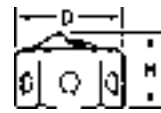
On-Serts® They fit "ON THE BOSS"

PKG QTY. 100 - ALL ON-SERTS

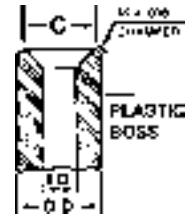
Metric Thread Size	Inch Thread Size	(see Note 1) SPAENAUR No.	ON-SERT FASTENERS				PLASTIC BOSS			SPAENAUR No. Applicator Tool (see Note 3)
			Design	Height H (In.)	Dia. D (In.)	Weight Lbs./M Pieces	O.D. (In.)	I.D. (In.) (see Note 2)	Min. Dia. of Ctsk. C (In.)	
3.5mm	4-40	628-001	1	.220	.284	1.0	.247-.253	.096-.100	.180	876-278
3.5mm	6-20 & 6-18	628-003	1	.230	.354	1.5	.309-.315	.116-.120	.250	876-280
4.2mm	8-18 & 8-15	628-005	1	.230	.354	1.4		.140-.144	.290	876-281
4.2mm	8-18 & 8-15	628-B78-1T	1	.230	.328	1.3	.279-.285	.140-.144	.220	876-280
4.2mm	8-18 & 8-15	628-007	1	.260	.544	3.5	.497-.503	.140-.144	.290	876-284
4.2mm	8-18 & 8-15	628-008	1	.254	.556	3.0	.509-.515	.140-.144	.290	876-285
4.2mm	8-18 & 8-15	628-009	1	.220	.422	1.9	.372-.378	.140-.144	.290	876-282
		628-010	2	.280	.422	1.9		.185-.250	none	876-286
4.2mm	8-32	628-011	1	.220	.422	1.9	.140-.144	.290	876-283	
4.8mm	10-12 & 10-16	628-013	1	.230	.422	1.8	.160-.164	.290	876-282	



Design 1
Screw enters through top of boss



Design 2
Screw enters through bottom of boss



NOTE 1. The thread form of Parts 628-001 and 628-011 is designed to accept either a machine screw or Type F Tapping Screw of the thread size designated. Each of the other parts accommodates a Tapping Screw of the size indicated.

NOTE 2. For maximum screw pull-out resistance with Design 1 parts, the boss I.D. should be as specified above to provide an interference fit with the screw. On-sert fasteners can also be used where the screw clears the I.D. of the boss, but this arrangement reduces resistance to screw pull-out.

NOTE 3. Design 2 parts should always be installed with the appropriate applicator tool which is designed to protect the projecting thread form from deformation by pressure or a direct blow. Although Design 1 parts may be installed by tapping directly on the top of the fasteners with a hammer, the magnetized applicator tool facilitates handling and positioning.

On-Sert® APPLICATOR TOOLS



Style 2



Style 3



Style 4

Tools
PKG QTY. 1

SPAENAUR No.		Style No.	Overall Length L	Bolt Clearance Depth	Dia. D
Fastener	Tool				
628-001	876-278	2	3"	Not applicable	1/2"
628-003	876-280	2	3"		1/2"
628-005	876-281	4	3"		1/2"
628-B78-1T	876-280	2	3"	3/4"	1/2"
628-007	876-284	2	3"		3/4"
628-008	876-285	4	3"		3/4"
628-009	876-282	2	3"	1-1/4"	5/8"
628-010	876-286	3	1-13/16"		.615"
628-011	876-283	4	3"	N/A	5/8"
628-013	876-282	2	3"	N/A	5/8"