

Round Pilot Weld Nuts / Nut Retainers

Inch and Metric

Écrous de montage ronds à souder / Cages d'écrous

Pouce et Métrique



ROUND PILOT WELD NUTS - INCH Sizes

STEEL C-1015 Plain Finish and STAINLESS STEEL 300 Series



Pilot-projection Weld Nuts provide load bearing threads in sheets too thin to thread. Engineered projections - no burnouts in thin sheets. Round body - no indexing. Fits on narrow flanges. Self-locating pilot shank protects threads from weld splatter, eliminating the need to retap.

Thread fits are UN-2B

PKG QTY. 100

| INCH SIZES | | | | | | | | |
|-------------|--------------|-----------------|------|--------|-------|--------|---------------------|--------------|
| Thread Size | SPAENAUR No. | | T | C Max. | E | A Max. | *Hole Size in Sheet | Thickness |
| | STEEL | Stainless Steel | | | | | | |
| 6-32 | N-187 | — | 3/32 | .191 | 11/32 | .030 | .193 | .030 |
| 8-32 | N-188 | — | 7/64 | .216 | 3/8 | .030 | .218 | to .060 |
| 10-24 | N-190 | 208-811 | 5/32 | .248 | 7/16 | .030 | .250 | |
| 10-32 | N-189 | — | 5/32 | .248 | 7/16 | .030 | .250 | |
| 1/4-20 | N-193 | 208-810 | 3/16 | .315 | 33/64 | .048 | .316 | .050 to .095 |

*(-.000 to +.004)

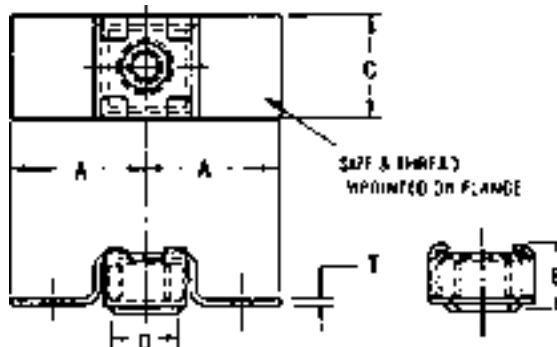
FLOATING NUT RETAINERS - INCH and METRIC Sizes

STEEL

Material: SAE 1010-1110 or Equivalent

Plain Finish

Thread: Class 2B



| INCH Sizes | | Regular Metric Coarse Thread METRIC Sizes | | Dimension in Inches | | | | | PKG QTY. |
|--------------|----------|---|----------|---------------------|-------|-------|------|-----------|----------|
| SPAENAUR No. | Nut Size | SPAENAUR No. | Nut Size | A | B | C | D | T | |
| 208-273 | 8-32 | — | — | 3/4 | 5/16 | 1/2 | 5/16 | .037-.045 | 100 |
| 208-274 | 10-24 | — | — | 3/4 | 5/16 | 1/2 | 5/16 | .037-.045 | 100 |
| — | — | 208-011 | M5 | 3/4 | 5/16 | 1/2 | 5/16 | 0.37-0.45 | 100 |
| — | — | 208-016 | M6 | 3/4 | 5/16 | 1/2 | 5/16 | .037-.045 | 100 |
| 208-275 | 12-24 | — | — | 7/8 | 13/32 | 9/16 | .398 | .045-.050 | 100 |
| 208-276 | 1/4-20 | — | — | 7/8 | 13/32 | 9/16 | .398 | .045-.050 | 100 |
| 208-277 | 1/4-28 | — | — | 7/8 | 13/32 | 9/16 | .398 | .045-.050 | 100 |
| 208-278 | 5/16-18 | 208-013 | M8 | 1 | 15/32 | 25/32 | .523 | .045-.050 | 50 |
| N-61 | 5/16-18 | — | — | 7/8 | 7/16 | 5/8 | 1/2 | .045-.050 | 50 |
| 208-279 | 5/16-24 | — | — | 1 | 1/2 | 25/32 | .523 | .045-.050 | 50 |
| 208-280 | 3/8-16 | 208-014 | M10 | 1 | 1/2 | 25/32 | .523 | .045-.050 | 50 |
| N-62 | 3/8-24 | — | — | 7/8 | 7/16 | .72 | 1/2 | .045-.050 | 50 |
| 208-281 | 7/16-14 | — | — | 1-1/8 | 25/32 | 15/16 | 3/4 | .045-.050 | 50 |
| 208-282 | 1/2-13 | — | — | 1-1/8 | 25/32 | 15/16 | 3/4 | .045-.050 | 25 |