

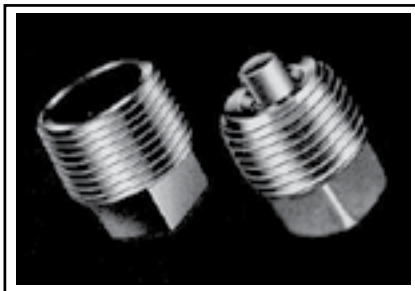
Pipe Thread Magnetic Plugs

Inch

Bouchons aimantés filetés de tuyau

Pouce

PIPE THREAD MAGNETIC PLUGS



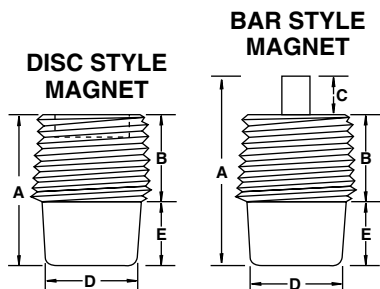
Magnet removes from the circulating oil or hydraulic fluid ferrous particles which might cause damage to the motor or product.

Typical applications:

- cars and trucks
- commercial and military aircraft
- aircraft accessory drives
- road machinery
- farm machinery
- stationary engines
- marine motor & equipment
- hydraulic systems
- industrial machinery and other systems
- air conditioning and refrigeration equipment
- printing presses
- pumps
- gear boxes
- compressors
- mining machinery



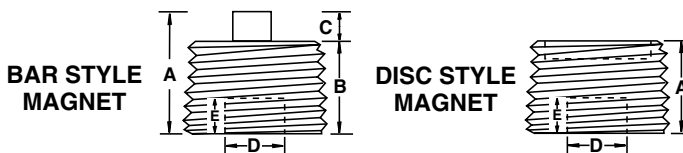
Removed for Inspection and Cleaning



SQUARE HEAD

All Dimensions in Inches PKG QTY. 1

SPAENAUR No.	Pipe Thread	Magnet Style	Magnet Material	A Overall Nominal Length	B Body Length	C Magnet Projection	D Head Size	E Head Depth	Body Material
246-139	1/8"-27 NPTF	Bar	Neodymium	.94	.38	.32	.27	.24	Steel
246-135	1/4"-18 NPTF		Neodymium	1.0	.47	.225	.37	.30	
246-113	3/8"-18 NPTF	Bar	Neodymium	.80	.47	—	.43	.34	Steel
246-136	3/8"-18 NPTF		Neodymium	1.05	.50	.23	.44	.31	
246-A12-1M	1/2"-14 NPTF	Disc	Ceramic I	.96	.57	—	.56	.38	
246-A11-1W	3/4"-14 PTF		Ceramic I	1.11	.62	—	.62	.45	
246-A16-1Y	1"-11-1/2 NPTF	Disc	Ceramic I	1.33	.75	—	.81	.52	Malleable Iron
246-115	1-1/4"-11-1/2 NPTF		Ceramic I	1.37	.81	—	.94	.56	
246-116	1-1/2"-11-1/2 NPTF	Bar	Ceramic I	1.85	.97	.25	1.12	.62	Cast Iron
246-117	2"-11-1/2 NPTF		Ceramic I	1.81	.88	.25	1.37	.68	



HEX RECESSED

246-132	1/4"-18 NPTF	Bar	Neodymium	.738	.47	.26	.25	.19	Steel
246-A17-1C	3/8"-18 NPTF	Bar	Neodymium	.66	.47	.19	.31	.19	
246-129	3/8"-18 NPTF	Disc	Ceramic I	.52	.46	.06	.31	.19	
246-A09-1W	1/2"-14 NPTF	Bar	Neodymium	.845	.63	.215	.38	.25	
246-130	1/2"-14 NPTF	Disc	Ceramic I	.61	.61	—	.38	.25	
246-A10-1K	3/4"-14 NPTF	Bar	Neodymium	.76	.64	.14	.56	.31	

SQUARE RECESSED

246-106	1/2"-14 NPTF	Disc	Ceramic I	.63	.63	—	.38	.25	Steel
246-107	3/4"-14 NPTF	Disc	Ceramic I	.62	.62	—	.51	.31	

H

H6

Deep-Reach Magnetic Threaded Plug / Pressure Pipe Plugs

Bouchons filetés aimantés à longue portée / Bouchons de tuyau sous pression



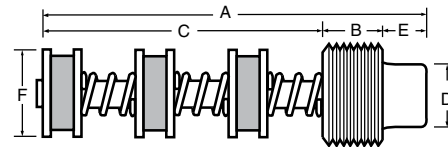
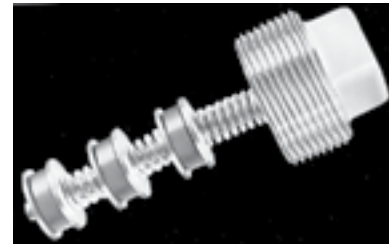
Inch
Pouce

DEEP-REACH ASSEMBLIES

DEEP-REACH ASSEMBLIES are designed to provide magnetic protection for large capacity lube or hydraulic systems. Greater magnetic capability is accomplished by stacking several magnets on a post or inside a thin stainless steel or brass tube. This type of construction projects the chip collection area farther into the system and closer to the areas of chip generation.

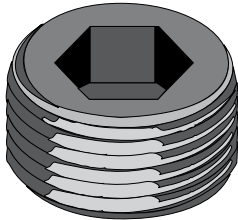
The tube method of construction is used primarily on applications that require frequent inspection and cleaning. The "magnetic tube" is easily wiped off. Spacers between the magnets in the tube concentrate the magnetic fields and increase the holding capacity of the unit.

PKG QTY. 1



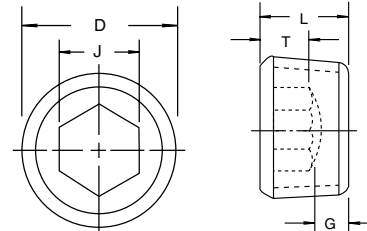
SPAENAUR No.	Thread Size & Class	No. of Magnets Style & Material	A Overall Nominal Length In. (mm)	B Thread Length In. (mm)	C Magnet Projection In. (mm)	D Head Size In. (mm)	E Head Height In. (mm)	F Magnet Assembly Diameter In. (mm)	Body Material
246-211	3/4"-14 NPTF	3-Disc, Ceramic I	4-3/16" (106.3)	5/8" (15.9)	3" (76.2)	5/8" (15.9)	7/16" (11.1)	7/8" (9.7)	Steel
246-212	1"-11-1/2 NPTF	3-Disc, Ceramic I	4-1/4" (108.0)	3/4" (19.1)	3" (76.2)	13/16" (20.6)	17/32" (13.5)	7/8" (9.7)	Cast Iron
246-213	1-1/4"-11-1/2 NPTF	3-Disc, Ceramic I	4-11/32" (110.3)	13/16" (20.6)	3" (76.2)	15/16" (23.8)	17/32" (13.5)	7/8" (9.7)	Cast Iron

H



Hex Socket Pressure Pipe Plugs

Dryseal - NPTF - 3/4" Taper Per Foot
Alloy Steel, Stainless Steel and Brass



* Stainless steel hex socket plugs can be ± 10% on the max. overall length

Material	SPAENAUR No.	Nom. Size	D Nom. O.D.	Threads Per Inch	J Hex-Socket Size Nom.	T Key Engagement Min.	G Wall Thickness Min.	L Overall Length			PKG QTY.
								Nom.	*Max.	Min.	
Alloy Steel	246-120	1/16"	.312"	27	5/32"	.140"	.062"	5/16"	.324"	.300"	100
	246-121	1/8"	.405"	27	3/16"	.140"	.062"	5/16"	.324"	.300"	100
	246-122	1/4"	.540"	18	1/4"	.218"	.073"	7/16"	.457"	.417"	100
	246-A13-1X	3/8"	.675"	18	5/16"	.250"	.084"	1/2"	.520"	.480"	100
	246-124	1/2"	.840"	14	3/8"	.312"	.095"	9/16"	.583"	.542"	50
	246-125	3/4"	1.050"	14	9/16"	.312"	.125"	5/8"	.645"	.605"	25
	246-126	1"	1.315"	11-1/2	5/8"	.375"	.125"	3/4"	.770"	.730"	10
Stainless Steel	246-127	1-1/4"	1.660"	11-1/2	3/4"	.437"	.156"	13/16"	.832"	.792"	5
	246-A03-1P	1/16"	.312"	27	5/32"	.140"	.062"	17/64"	.324"	.300"	10
	246-805	1/16"	.300"	27	5/32"	.129"	.140"	9/32	.324"	.300"	10
	246-A04-1Y	1/8"	.405"	27	3/16"	.140"	.062"	17/64"	.457"	.417"	10
	246-A05-1C	1/4"	.540"	18	1/4"	.218"	.073"	13/32"	.520"	.480"	10
Brass	246-A06-2N	3/8"	.675"	18	5/16"	.250"	.084"	13/32"	.425"	.395"	5
	246-500	1/16"	.312"	27	5/32"	.140"	.062"	19/64"	.310"	.290"	100
	246-501	1/8"	.405"	27	3/16"	.140"	.062"	19/64"	.310"	.290"	10
	246-502	1/4"	.540"	18	1/4"	.218"	.073"	15/32"	.475"	.445"	10
	246-503	3/8"	.675"	18	5/16"	.250"	.084"	15/32"	.475"	.445"	10
246-504	1/2"	.840"	14	3/8"	.312"	.095"	5/8"	.630"	.590"	5	

CATALOG 14

SPAENAUR