

Inch

Multi-Purpose Handles & Cams

Pouce

Poignées et cames multifonctions

**Spaenaur No. "T" HANDLE
096-264**

(With Set Screw)

For 5/16" sq. shaft

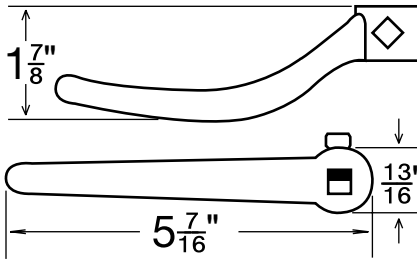


Zinc Die Cast - Bright Chrome Plated
Use with any type of lock cam arrangement.

PKG QTY. 1

INSIDE RELEASE HANDLE

Spaenaur No. 099-713



For handles with shanks 5/16" (8 mm) square.

Material: Zinc Die-cast

Finish: Kasonized (Grey Enamelled)

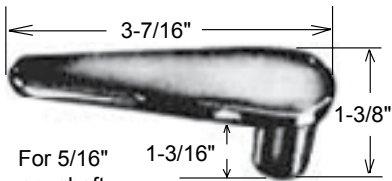
PKG QTY. 1



INSIDE HANDLE

Spaenaur No. 096-266

(With Set Screw)



For 5/16" sq. shaft

Zinc Die Cast - Chrome Plated

PKG QTY. 1



INSIDE HANDLE

An excellent general use item where an inside handle is required. Made of durable malleable iron.

Spaenaur No.

D-4038

(Mfr. #1-5653A)

With Flush Set Screw

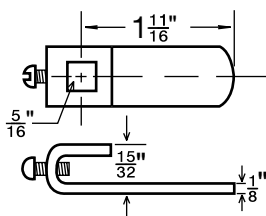
PKG QTY. 1



ADJUSTABLE CAMS

Steel, Zinc Plated

Spaenaur No. 096-333



PKG QTY. 1



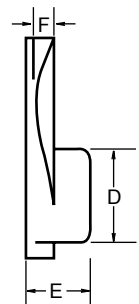
Screw Included

LOCKING CAMS (2 Sizes)

These diecast cams take 0.312" (8 mm) shafts and are secured by a fitted grub-screw. The cam form provides a simple and fast way of securing cabinet doors against a gasket.

PKG QTY. 1

Spaenaur No. 110-153



Large Cam

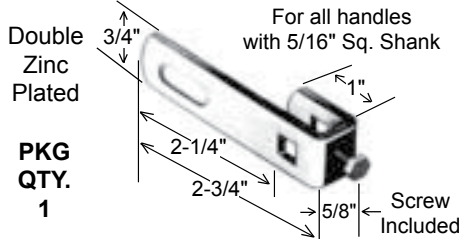
- A. Length 2.5"
- B. Width 1.6"
- C. Location 0.45"
- D. Boss width 0.75"
- E. Boss height 0.625"
- F. Cam movement 0.25"



ADJUSTABLE SINGLE POINT LATCH

Spaenaur No. D-4024 (Mfr. #5559)

For all handles with 5/16" Sq. Shank



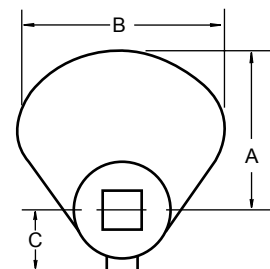
PKG QTY. 1

Screw Included

Spaenaur No. 110-152

Standard Cam

- A. Length 1.25"
- B. Width 1.6"
- C. Location 0.45"
- D. Boss width 0.75"
- E. Boss height 0.5"
- F. Cam movement 0.15"



More Cams on pages L10 - L12.

CATALOG 14

SPAENAUR