

**ROUND STYLE**

This material is a very effective insulator for electrical and high-temperature applications (up to **149°C**, 300°F). It is virtually unaffected by water, oils, grease and most commonly encountered chemicals.

Hard - Extremely Tough for machinery, levers, gear-shifts, etc.

PKG QTY. 10

See page J82 for Round Style with Tapped Brass Inserts.

**BLACK PHENOLIC BALL KNOBS**

**Inch Sizes**

SPAENAUR No.	Outside Dia.	Thread Size	Depth of Thread
<b>134-C11-1A</b>	1"	10-24	1/2"
<b>134-209</b>	1"	1/4"-20	1/2"
<b>134-C03-1N</b>	1"	5/16"-18	1/2"
<b>134-C04-1T</b>	1-1/4"	3/8"-16	3/4"
<b>134-066</b>	1-3/8"	1/4"-20	1/2"
<b>134-C13-1Y</b>	1-3/8"	3/8"-16	5/8"
<b>K-54</b>	1-7/8"	3/8"-16	1-1/4"
<b>134-C15-1N</b>	1-7/8"	1/2"-13	3/4"
<b>K-54-1</b>	1-7/8"	5/8"-18	7/8"

**Metric (Coarse) Thread**

<b>134-604</b>	1-5/8"	M16	1"
<b>134-605</b>	1-7/8"	M12	1"
<b>134-607</b>	1-7/8"	M16	7/8"

**PEAR SHAPE**

PKG QTY. 10

**Inch Sizes**

SPAENAUR No.	Outside Dia.	Thread Size	Depth of Thread
<b>134-C16-1T</b>	1-5/8"	3/8"-16	1-1/8"
<b>134-C17-1K</b>	1-5/8"	1/2"-13	1-1/8"



**Handwheels / Hand Knobs**

Inch and **Metric**

**Molettes / Boutons à main**

Pouce et **Métrique**

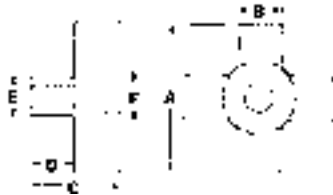
**4-PRONG PLASTIC KNOBS**

**Black Phenolic with Brass insert**

Excellent gripping action. Widely used for machines, components, clamping and consumer products.



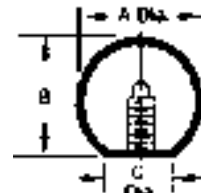
Thru Hole Brass Insert



**BLACK PHENOLIC BALL KNOBS**

This material is a very effective insulator for electrical and high-temperature applications (up to **149°C, 300°F**). It is virtually unaffected by water, oils, grease and most commonly encountered chemicals.

With... Tapped Brass Inserts for greater thread strength.



**ROUND STYLE**  
Inch Sizes

SPAENAUR No.	Thread Size	Dimensions		
		A	B	C
134-015	1/4"-20	3/4"	11/16"	3/8"
134-001	10-24	1"	31/32"	1/2"
134-004	1/4"-20	1"	31/32"	1/2"
134-002	5/16"-18	1"	31/32"	1/2"
134-003	3/8"-16	1"	31/32"	1/2"
134-005	1/4"-20	1-3/8"	1-19/64"	5/8"
134-006	5/16"-18	1-3/8"	1-19/64"	5/8"
134-007	3/8"-16	1-3/8"	1-19/64"	5/8"
134-008	5/16"-18	1-5/8"	1-37/64"	11/16"
134-009	3/8"-16	1-5/8"	1-37/64"	11/16"
134-010	1/2"-13	1-5/8"	1-37/64"	11/16"
134-011	3/8"-16	1-7/8"	1-51/64"	3/4"
134-012	1/2"-13	1-7/8"	1-51/64"	3/4"
134-C14-1C	5/8"-11	1-7/8"	1-51/64"	3/4"

**KNURLED PLASTIC KNOB**

**Black Phenolic with Brass insert**

Ideally suited for medium and light duty applications.



SPAENAUR No.	A	B	C	D	E	Insert		PKG QTY.
						Thread	Depth	
134-016	1-7/8"	5/16"	1"	1/2"	1"	3/8"-16	1/2"	10

**TAPERED PLASTIC KNOB**

**Black Phenolic with Brass insert**

Ideal for finger tip levers and push-pull or lid knobs.



SPAENAUR No.	A	B	C	Insert		PKG QTY.
				Thread	Depth	
134-017	3/4"	7/8"	3/8"	8-32	5/16"	10

**Metric (Coarse) Thread**

134-611	M10	1-3/8"	1-19/64"	5/8"
134-612	M12	1-3/8"	1-19/64"	5/8"
134-613	M12	1-7/8"	1-51/64"	3/4"
134-614	M16	1-7/8"	1-51/64"	3/4"

ALL ABOVE ITEMS - PKG QTY. 10

**For more KNOBS see pages B284, B285 & J68-J74.**

