

**COARSE and FINE
THREAD
LONG and SHORT
PILOT
NOT PLATED**

PILOT PROJECTION HEX WELD NUTS STANDARD SERIES

The Gripco Standard Series of Pilot Projection Weld Nuts are manufactured from low carbon steel for use with Grade 2 bolts. These weld nuts are engineered for positioning in pierced or drilled holes. The pilot eliminates the need for expensive jigs or centering devices, and helps reduce welding spatter from entering the nut threads.

The three-projection type provides a non-rocking, firm current connection during welding. The mass of the projections is increased in proportion to increased pilot heights to assure welds on thick or thin metals.

- No markings are required for Standard Series Pilot Projection Weld Nuts.
- This product is also available with the Gripco prevailing torque feature, special to order.

Long Pilot - For use with 13 gauge (.0897") metal or thicker

				ALL DIMENSIONS IN INCHES						
Coarse Thread Size	SPAENAUR No.	Fine Thread Size	SPAENAUR No.	A Width Across Flats	B Min. Width Across Corners	C Thick-ness ±.010	D Projection Height ±.003	E Pilot Height ±.005	F Pilot Dia. +.000 -.012	Pilot Hole Dia.
1/4"-20	▲ 208-K03-2T	1/4"-28	208-215	.500	.556	.187	.040	.085	.406	.421
M6 x 1 mm	208-400	Property Class 9, plain finish		13.00 mm	14.38 mm	5.35 mm	.80 mm ±.075	1.60 mm ±.13	9.10 mm +0.0 to -0.3	9.50 mm
5/16"-18	▲ 208-K02-2N	5/16"-24		.562	.624	.218	.040	.085	.469	.484
3/8"-16	208-207	3/8"-24	208-216	.625	.691	.250	.040	.085	.531	.546
1/2"-13	208-K12-1Y	1/2"-20		.812	.898	.375	.040	.085	.719	.734
5/8"-11	▲ 208-K16-1K	5/8"-18		.937	1.051	.437	.040	.085	.781	.796

Short Pilot - For use with 14 gauge (.0747") metal or thinner

10-24	▲ 208-K13-1C	10-32	▲ 208-K18-1M	.500	.556	.187	.025	.040	.406	.421
1/4"-20	208-206	1/4"-28	208-K11-1P	.500	.556	.187	.025	.040	.406	.421
5/16"-18	N-208	5/16"-24	208-219	.562	.624	.218	.025	.040	.469	.484
3/8"-16	N-209	3/8"-24	208-220	.625	.691	.250	.030	.050	.531	.546
1/2"-13	N-210			.812	.898	.375	.035	.060	.719	.734
5/8"-11	208-209			.937	1.051	.437	.035	.060	.781	.796

▲ Not Gripco

Contact Sales Desk For Package Quantities

6-Projection type are available in sizes listed above, subject to minimum production runs.

Tab Weld Nuts

Écrous à pattes à souder

STANLEY
Engineered Fastening

GRIPCO

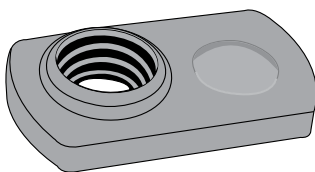
Inch
Pouce

THE GRIPCO P1 AND P2 SERIES TAB WELD NUTS are manufactured from low carbon steel. These Tab Weld Nuts have been carefully engineered to offer fast, dependable results on flat sections, confined corners, close spacing, flanges, and narrow channels in open and blind applications.

The self-locating pilot positions the nut for assembly. The height of the pilot helps prevent welding spatter from entering the nut threads. The nut can be welded to a wide variety of metal thicknesses.

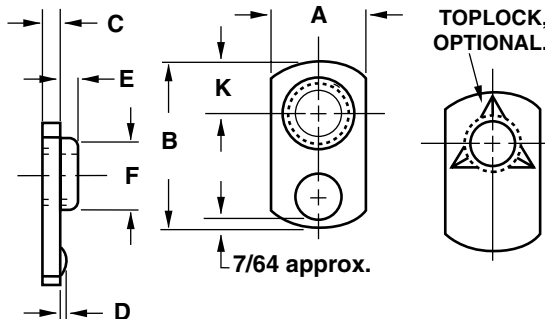
Prevailing torque feature can be incorporated on the side opposite the pilot, special to order. Nuts can also be furnished with plating, if required.

**TAB WELD NUTS
PILOT PROJECTION
P1 SERIES**



NOT
PLATED

COARSE and
FINE THREAD

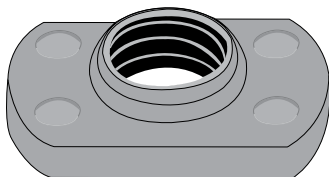


Coarse Thread Size	SPAENAUR No.	Fine Thread Size	SPAENAUR No.	A Width	B Length	C Thickness	K	Pilot		Pilot Hole Dia.	D Projection Height
								E	F		
6-32	▲208-033	—	—	.437	.625	.094	.187	.031	.187	.203	.020
8-32	▲208-020	—	—	.437	.625	.094	.187	.031	.203	.218	.020
8-32	*208-812	—	—	.380	.625	.094	.172	—	.193	.219	—
10-24	208-034	10-32	▲208-K10-1A	.437	.625	.094	.187	.031	.234	.250	.020
1/4"-20	▲208-283	—	—	.500	.812	.128-.122	.250	.046	.296	.312	.025
5/16"-18	208-022	5/16"-24	—	.625	1.125	.135	.343	.078	.359	.375	.030

▲Not Gripco

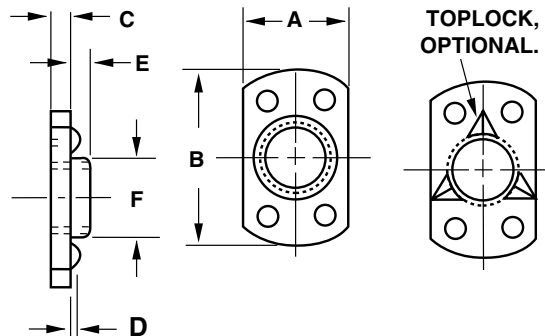
*Stainless Steel, passivated finish (not Gripco).

**TAB WELD NUTS
PILOT PROJECTION
P2 SERIES**



NOT
PLATED

COARSE and FINE
THREAD



Coarse Thread Size	SPAENAUR No.	Fine Thread Size	SPAENAUR No.	A Width	B Length	C Thickness	Pilot		Pilot Hole Dia.	D Projection Height
							E	F		
10-24	—	10-32	▲208-K05-1W	.375	.625	.094	.031	.234	.250	.020
10-24	▲208-026	—	—	.443	.625	.094	.031	.234	.250	.020
1/4"-20	208-027	1/4"-28	—	.500	.812	.105	.046	.296	.312	.025
5/16"-18	208-028	5/16"-24	◆208-036	.625	1.000	.135	.078	.359	.375	.030
3/8"-16	208-029	3/8"-24	—	.625	1.000	.135	.093	.437	.453	.030
1/2"-13	208-030	1/2"-20	—	.812	1.250	.187	.125	.593	.609	.033

▲Not Gripco

◆Copper Plated and Toplock.

Contact Sales Desk For Package Quantities

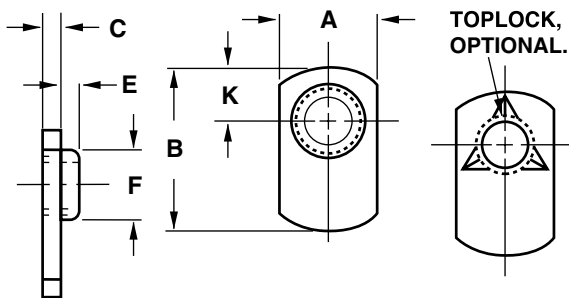
Inch and Metric
Pouce et Métrique

STANLEY
Engineered Fastening

GRIPCO

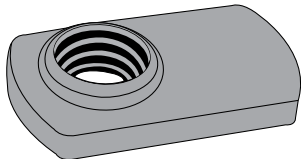
Tab Weld Nuts

Écrous à pattes à souder



TAB WELD NUTS PILOT SPOT WELD S1 SERIES

The Gripco S1 Series Tab Weld Nuts are manufactured from low carbon steel. These Tab Weld Nuts have been carefully engineered to offer fast, dependable results on flat sections, confined corners, close spacing, flanges, and narrow channels in open and blind applications. The self-locating pilot positions the nut for assembly. The height of the pilot helps prevent welding spatter from entering the nut threads. The nut can be welded to a wide variety of metal thicknesses.

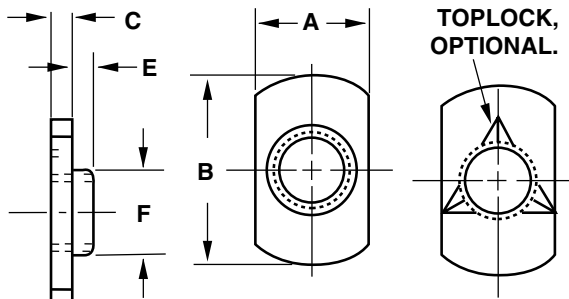


NOT PLATED

- Prevailing torque feature can be incorporated on the side opposite the pilot, special to order.
- Can be furnished with plating, if required.

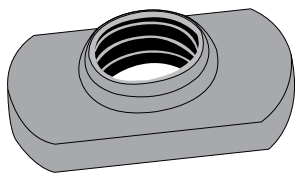
COARSE and FINE THREAD

Coarse Thread Size	SPAENAUR No.	Fine Thread Size	SPAENAUR No.	A Width	B Length	C Thickness	K	Pilot		Pilot Hole Dia.
								E	F	
6-32	▲ N-233			.437	.625	.094	.187	.031	.187	.203
10-24	N-234	10-32	▲ 208-K09-1P	.437	.625	.094	.187	.031	.234	.250
1/4"-20	208-K04-1K			.500	.812	.105	.250	.046	.296	.312
5/16"-18	N-238			.625	1.125	.135	.343	.078	.359	.375
3/8"-16	208-K19-1X			.625	1.125	.135	.343	.093	.437	.453



TAB WELD NUTS PILOT SPOT WELD S2 SERIES

The Gripco S2 Series Tab Weld Nuts are manufactured from low carbon steel. These Tab Weld Nuts have been carefully engineered to offer fast, dependable results on flat sections, confined corners, close spacing, flanges, and narrow channels in open and blind applications. The self-locating pilot positions the nut for assembly. The height of the pilot helps prevent welding spatter from entering the nut threads. The nut can be welded to a wide variety of metal thicknesses.



NOT PLATED

- Prevailing torque feature can be incorporated on the side opposite the pilot, special to order.
- Can be furnished with plating, if required.

COARSE and FINE THREAD

Coarse Thread Size	SPAENAUR No.	Fine Thread Size	SPAENAUR No.	Dimensions in Inches					
				A Width	B Length	C Thickness	Pilot		Pilot Hole Dia.
6-32	N-241			.437	.812	.094	.031	.187	.203
10-24	▲ 208-K15-1T	10-32	208-K06-1M	.437	.812	.094	.031	.234	.250
1/4"-20	N-245			.500	1.000	.105	.046	.296	.312
5/16"-18	208-K20-1M			.625	1.500	.135	.078	.359	.375
3/8"-16	208-K01-1C			.625	1.500	.135	.093	.438	.453
1/2"-13	N-250			.812	1.500	.187	.125	.593	.609

METRIC TAB WELD NUTS PILOT SPOT WELD S2M SERIES

Coarse Thread Size	SPAENAUR No.	Fine Thread Size	SPAENAUR No.	Dimensions in Millimetres					
				A Width	B Length	C Thickness	Pilot		Pilot Hole Dia.
M6 x 1	208-300	—	—	13.1/12.4	25.4	2.7	1.2	7.5	8.0
M8 x 1.25	▲ 208-301	—	—	16.3/15.6	38.1	3.6	2.0	9.1	9.6

Contact Sales Desk For Package Quantities
▲ Not Gripco