

Finishing Washers

Inch

Rondelles de finition

Pouce

FINISHING (SCREW) WASHERS

ORDER BY SPAENAUR NUMBERS LISTED BELOW PKG QTY. 100

COUNTERSUNK



▲ 7/8" O.D.

Screw Size	Outside Diameter	BRASS	BRASS NIC. PL.	STEEL NIC. PL.	18-8 STAINLESS	Nylon O.D.	NATURAL 6/6 NYLON	BLACK 6/6 NYLON
No. 4	25/64"	7141B	7141		W-2073			
No. 6	7/16"	7143B	7143	641-A01-1K	W-2010	.437"	W-5008	644-102
No. 8	17/32"	7145B	643-A02-1T	W-372NP	W-2011	.510"	W-5009	644-103
No. 9	17/32"	7146B	7146					
No. 10	19/32"	7147B	7147	W-255NP	W-2012	.575"	W-5010	644-105
No. 12	11/16"	7148B	7148	W-373NP	W-2013	.609"		
1/4"	25/32"			W-374NP	W-2014	.683"	W-5011	644-107
9/32"	25/32"		7150					
5/16"	15/16"	7151B	7151	▲W-375NP	642-003			
3/8"	1-1/8"	7153B	7153					
FLUSH TYPE								
No. 6	11/32"	7137B	7137					
No. 6	.358"				W-2015			
No. 8	3/8"	7138B	7138					
No. 10	15/32"	7139B	7139	W-254	W-2017			
No. 12	9/16"	7140B	643-A04-1W					
No. 14	5/8"		W-539N					

COUNTERSUNK WASHER

SPAENAUR No. 641-A03-1M

Wide Flange
STEEL, Zinc Plated

PKG QTY. 50



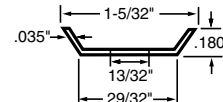
1/4" I.D.
1-3/16" O.D.
.035" Thick

CUP WASHER

SPAENAUR No. 641-001

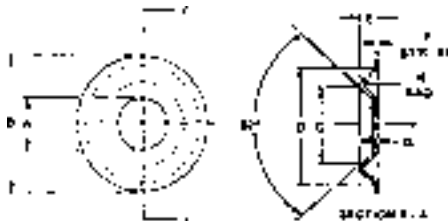
STEEL,
Zinc Plated

PKG QTY. 50



FLANGE-TYPE COUNTERSUNK WASHERS

PKG QTY. 100

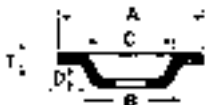


ORDER BY SPAENAUR No's.

STAINLESS STEEL 18-8	BRASS PLAIN	BRASS NICKEL PLTD.	Size Screw	Dimensions in Inches						
				A	B	C	D	E	F	G
642-002	643-002	643-003	#6	.200	.500	.290	.420	.090	.012	.020
W-10	643-004	643-A01-1N	#8	.220	.615	.355	.531	.099	.020	.020
642-A01-1T	643-006	643-007	#10	.293	.719	.370	.625	.109	.020	.020

FLUSH COUNTERSUNK WASHERS

STEEL, Zinc Plated
FOR NO. 8
OVAL HEAD SCREWS



RECESSED WASHERS

STEEL, Zinc Plated



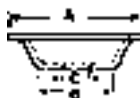
SPAENAUR No.	Approximate Dimensions				PKG QTY.
	A	B	C	D	T
W-316	1/2"	5/16"	5/16"	5/64"	.035"

SPAENAUR No.	Dimensions in Inches						PKG QTY.
	A	B	C	D	H	T	
W-314	11/16	9/32	1/4	1/32	5/32	.020	100



CUP WASHERS

STEEL, Zinc Plated
PKG QTY. 100



SPAENAUR No.	Outside Dia. A	Dia. B	Hole C	Material Thickness
641-A02-1W	9/16"	3/8"	5/32"	.020"
641-A04-1X	3/4"	1/2"	3/16"	.034"



SPACER WASHER

for 1/4" Bolt
STEEL, Zinc Plated
Hole Dia. 5/16" Outside Dia. 3/4"
Height 1/4"
PKG QTY. 50