

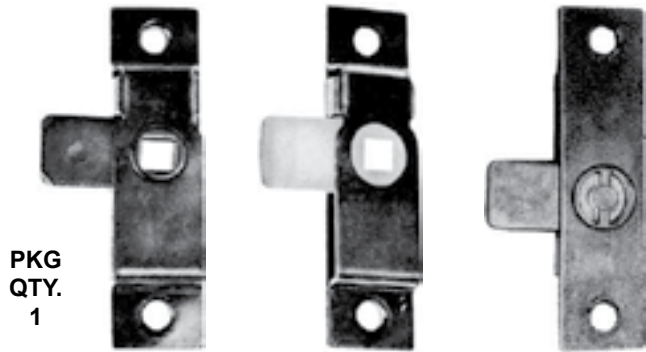
**Bolt Latches / Compartment Locks / Strike**

Inch

**Verrous de boulon / Verrous de compartiment / Frappe**

Pouce

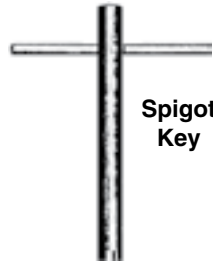
**BOLT LATCHES**



PKG QTY. 1

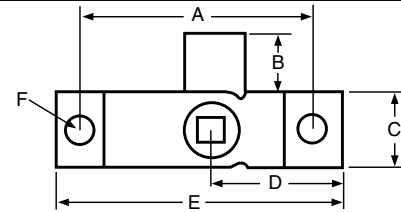
- SPAENAUR No. 099-171**  
"Universal" Type  
(All Steel)
- SPAENAUR No. 099-173**  
Nylon Tongue
- SPAENAUR No. 099-172**  
"Security" Type

Used with carriage key or fitted handle, taking a standard 5/16" square shaft. A striker plate is available.



Spigot Key

**SPAENAUR No. 876-811**



- A. Hole centres 2.62"
- B. Bolt height 0.7"
- C. Width 0.87"
- D. Location 1.5"
- E. Length 3.25"
- F. Hole size 0.25" dia.

**"Universal" Latch** - Not "handed", since bolt can rotate through 180° and turns completely through body of the latch.

**Nylon Tongue** - Identical to the "universal" latch, but with moulded nylon bolt.

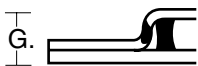
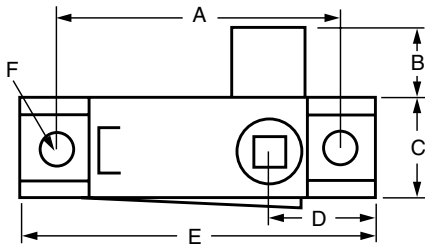
**"Security" Latch** - Incorporates a brass, stamped bolt into the "universal" latch steel case, to give a blind, dust-proof centre boss that requires a special "spigot" key to operate, thus giving much greater security than the normal square follow-bush.

**Large Size Bolt Latches**

Heavily constructed latch in 11 gauge (2.9 mm) steel, with forged brass bolt and secured with four pillar rivets.

Both styles accept 5/16" shank.

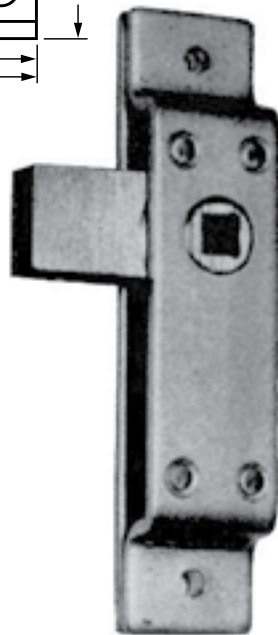
- SPAENAUR No. 099-179** Large-Size Latch, LH
- SPAENAUR No. 099-180** Large-Size Latch, RH



**Large-Size Latches**

- A. Hole centres 4.25"
- B. Bolt height 1.0"
- C. Width 1.1"
- D. Location 1.87"
- E. Length 5.0"
- F. Hole size 0.2"
- G. Height 0.625"

PKG QTY. 1

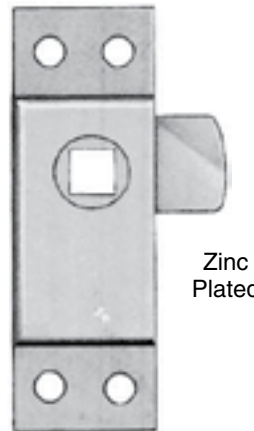


**COMPARTMENT LOCK SPAENAUR No. D-3227**

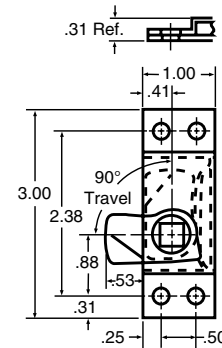
(Mfr. #5605)

LEFT HAND

Accepts 5/16" sq. shank.



Zinc Plated



(Right Hand - Special Order)

Use on small doors, access panels, motor compartments, oil can compartments, and tool boxes. Attached by screws or rivets.

Weight 2 oz. each

PKG QTY. 1



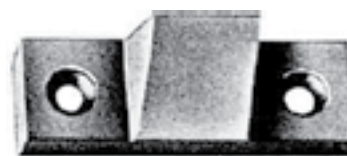
**SPAENAUR No. 099-156 Malleable Iron Strike**

**Dimensions**

- 2-1/2" length of plate
- 3/4" width of plate
- 5/32" thickness of plate
- 15/16" width of catch
- 9/16" thickness of heel of catch

Weight 2 oz. each

Mfr. #5620



PKG QTY. 10