

Symmetrical Hinges

Charnières symétriques



Inch

Pouce

HINGES

Countersunk Through Holes
Exterior Mounting

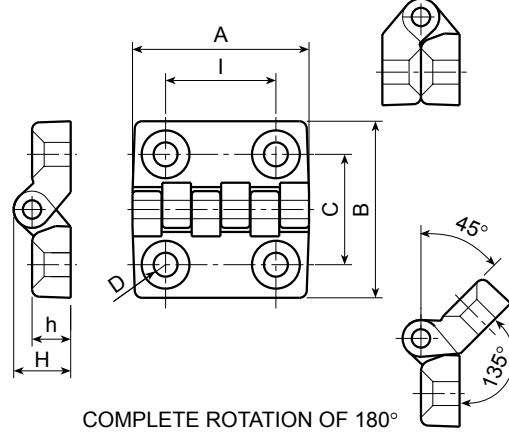
MATERIAL:
Reinforced Polyamide.
Oil and grease resistant.

PIN:
Steel, zinc plated
or Stainless Steel

SURFACE: Satin. **COLOUR:** Black.



PKG QTY. 1



SPAENAUR No.	I	C	A	B	h	H	D	Pin Dia.	Pin Material
135-151	0.79	0.79	1.26	1.26	0.28	0.41	0.16	0.11	Steel
135-154	0.79	0.79	1.26	1.26	0.28	0.41	0.16	0.11	Stainless
135-W48-1A	1.18	1.18	1.89	1.89	0.41	0.57	0.26	0.19	Steel
135-155	1.18	1.18	1.89	1.89	0.41	0.57	0.26	0.19	Stainless
135-W32-1K	1.58	1.58	2.52	2.52	0.51	0.75	0.26	0.19	Steel
135-W06-1K	1.58	1.58	2.52	2.52	0.51	0.75	0.26	0.19	Stainless

HINGES

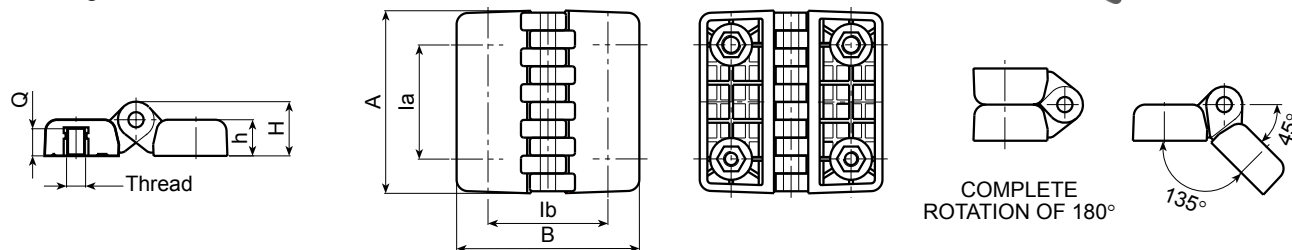
Flat, Tapped Female Insert
Interior Mounting

MATERIAL:
Reinforced Polyamide.
Oil and grease resistant.

SURFACE: Satin.
COLOUR: Black.

INSERT:
Zinc plated steel pin.
Brass blind threaded bushing.

PKG QTY. 1



SPAENAUR No.	la	lb	A	B	h	H	Q	Pin Dia.	Thread Size
135-157	1.18	1.18	1.89	1.89	0.41	0.57	0.28	0.19	10-32
135-158	1.18	1.18	1.89	1.89	0.41	0.57	0.28	0.19	1/4-20
135-159	1.58	1.58	2.52	2.52	0.51	0.75	0.35	0.19	1/4-20
135-160	1.58	1.58	2.52	2.52	0.51	0.75	0.35	0.19	5/16-18

L

Inch

Pouce



Symmetrical Hinges

Charnières symétriques

HINGES

Flat, Tapped Male Insert
Interior Mounting

MATERIAL:

Reinforced Polyamide.
Oil and grease resistant.

INSERT:

Zinc plated steel pin.
Zinc plated threaded steel bolt.

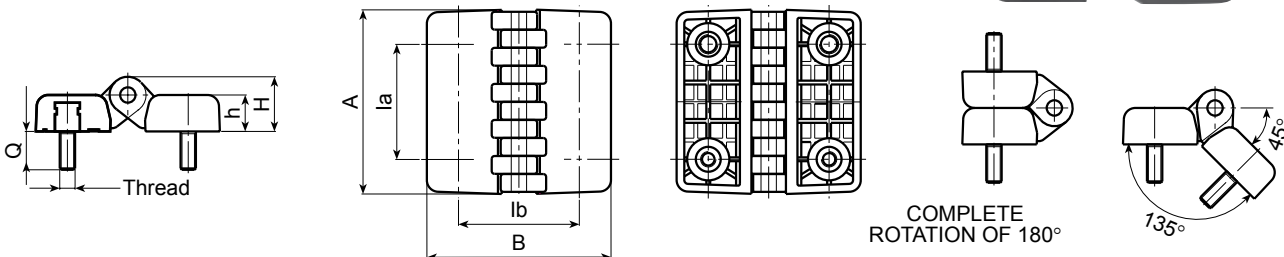
SURFACE:

Satin.

COLOUR:

Black.

PKG QTY. 1



COMPLETE ROTATION OF 180°

SPAENAUR No.	la	lb	A	B	h	H	Q	Pin Dia.	Thread Size
135-161	1.18	1.18	1.89	1.89	0.41	0.57	0.60	0.19	10-32
135-162	1.18	1.18	1.89	1.89	0.41	0.57	0.60	0.19	1/4-20
135-163	1.58	1.58	2.52	2.52	0.51	0.75	0.80	0.19	1/4-20
135-164	1.58	1.58	2.52	2.52	0.51	0.75	0.80	0.19	5/16-18

HINGES

All purpose, Tapped Female Insert
and Straight Door Assembling
Interior Mounting

MATERIAL:

Reinforced Polyamide.
Oil and grease resistant.

INSERT:

Zinc plated steel pin.
Brass blind threaded
bushing.

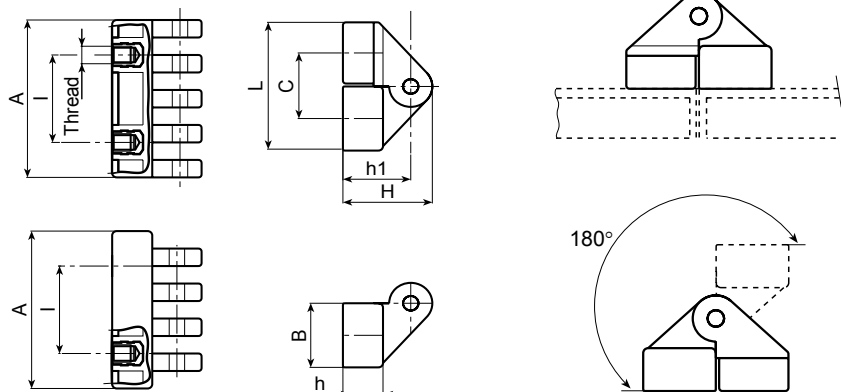
SURFACE:

Satin.

COLOUR:

Black.

PKG QTY. 1



SPAENAUR No.	I	C	A	B	L	h	h1	H	Thread Size
135-165	0.60	0.70	1.18	0.67	1.38	0.43	0.75	1.00	10-32
135-166	1.18	0.87	2.13	0.79	1.73	0.51	0.87	1.14	1/4-20
135-167	1.65	1.26	3.07	1.18	2.44	0.71	1.22	1.65	5/16-18

Other Symmetrical Hinges found on Page L141

CATALOG 14

SPAENAUR