

Hand Knobs

Boutons à main



Inch

Pouce

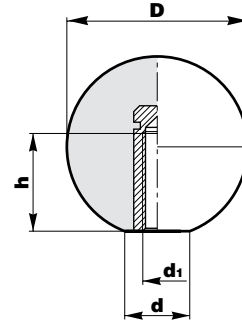
BALL KNOB

with Brass Insert

Contact Sales Desk For Package Quantities

SPAENAUR

No.	D	d	h	d1
135-168	0.98	0.55	0.63	10-32
135-169	0.98	0.55	0.63	1/4-20
135-001	1.18	0.55	0.79	1/4-20
135-002	1.18	0.55	0.79	5/16-18
135-170	1.38	0.63	0.91	1/4-20
135-171	1.38	0.63	0.91	5/16-18
135-003	1.58	0.63	1.10	5/16-18
135-172	1.58	0.63	1.10	3/8-16
135-004	1.97	0.71	1.42	3/8-16
135-W37-1P	1.97	0.71	1.42	1/2-13



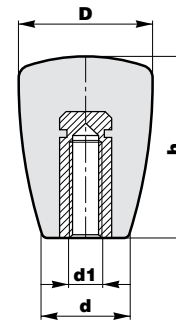
Thermoplastic Material

TAPERED KNOB

with Brass Insert

SPAENAUR

No.	D	d	h	d1
135-W68-1K	0.99	0.63	1.34	1/4-20
135-007	1.26	0.79	1.69	5/16-18
135-W88-1Y	1.26	0.79	1.69	3/8-16
135-174	1.26	0.79	1.69	1/2-13
135-008	1.69	1.06	2.29	3/8-16



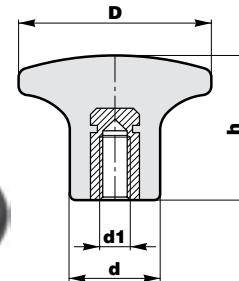
Thermoplastic Material

MUSHROOM KNOB

with Brass Insert

SPAENAUR

No.	D	d	h	d1
135-W89-1C	0.87	0.41	0.65	10-32
135-W14-1Y	0.87	0.41	0.65	1/4-20
135-W38-1Y	1.26	0.59	0.95	5/16-18



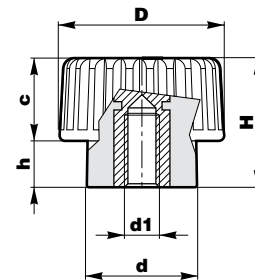
Thermoplastic Material

THUMB KNOB

with Brass Insert

SPAENAUR

No.	D	d	H	c	h	d1
135-W59-1X	0.59	0.39	0.45	0.30	0.16	1/4-20



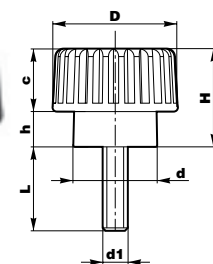
Thermoplastic Material

THUMB KNOB

Male

SPAENAUR

No.	D	d	H	c	h	L	d1
135-W24-1A	0.59	0.39	0.45	0.30	0.16	0.50	1/4-20
135-W15-1C	0.59	0.39	0.45	0.30	0.16	1.00	1/4-20



Thermoplastic Material

J

CATALOG 14

SPAENAUR

Inch

Pouce

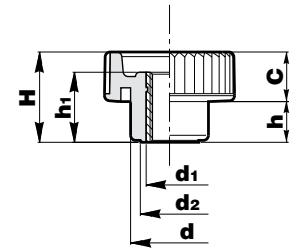


Hand Knobs

Boutons à main

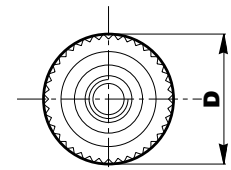
THUMB KNOB

Tapped Right Through



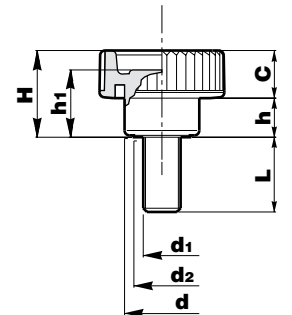
SPAENAUR No.	D	H	d	d1	d2	C	h	h1
135-W69-1W	0.83	0.59	0.51	1/4-20	0.37	0.33	0.26	0.49
135-014	1.02	0.71	0.63	5/16-18	0.47	0.37	0.33	0.59

Thermoplastic Material



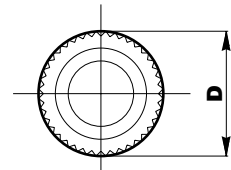
KNURLED THUMB KNOB

Male



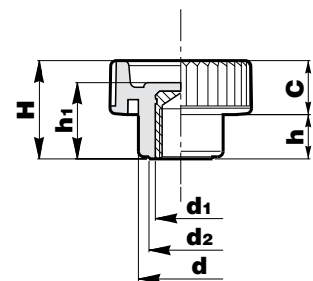
SPAENAUR No.	D	H	d	d1	d2	C	h	h1	L
135-W34-1M	0.83	0.59	0.51	1/4-20	0.37	0.33	0.26	0.49	0.50
135-W63-1P	0.83	0.59	0.51	1/4-20	0.37	0.33	0.26	0.49	1.00
135-W64-1Y	1.02	0.71	0.63	5/16-18	0.47	0.37	0.33	0.59	1.00
135-178	1.02	0.71	0.63	5/16-18	0.47	0.37	0.33	0.59	1.25

Thermoplastic Material



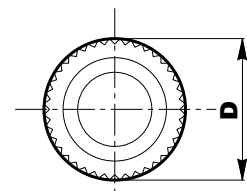
KNURLED THUMB KNOB

Female



SPAENAUR No.	D	H	d	d1	d2	C	h	h1
135-W27-1C	0.83	0.59	0.51	1/4-20	0.37	0.33	0.26	0.49
135-W65-1C	1.02	0.71	0.63	5/16-18	0.47	0.37	0.33	0.59
135-W66-1N	1.30	0.91	0.79	3/8-16	0.59	0.49	0.41	0.71

Thermoplastic Material



ALL ITEMS ON THIS PAGE - PKG QTY. 1

CATALOG 14 SPAENAUR

A tolerance of $\pm 0.125"$ is possible on Boteco non-critical measurements.