

# Ball Chain / Ball Chain Fittings

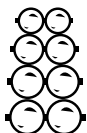
Inch

## Chaîne à billes / Raccords pour chaînes à billes

Pouce

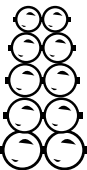
### STANDARD BALL CHAIN

STEEL- Nickel Plated Finish (\*304 Stainless Steel)



SPAENAUR No.	CHAIN NUMBER	DIAMETER	AVERAGE TENSILE STRENGTH	BALLS PER FOOT (APPROX.)	PKG QTY.
124-001	No. 3	3/32"	20 lbs.	91-94	1000 ft. spool
124-002	No. 6	1/8"	30 lbs.	69-70	1000 ft. spool
124-004	No. 175	.175"	45 lbs.	48-49	500 ft. spool
124-003	No. 10	3/16"	45 lbs.	48-49	500 ft. spool
*124-A02-1W	No. 10	3/16"	80 lbs.	48-49	500 ft. spool

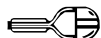
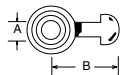
### BRASS - Nickel Plated Finish



SPAENAUR No.	CHAIN NUMBER	DIAMETER	AVERAGE TENSILE STRENGTH	BALLS PER FOOT (APPROX.)	PKG QTY.
124-005	No. 3	3/32"	20 lbs.	92-95	1000 ft. spool
124-006	No. 6	1/8"	30 lbs.	69-70	1000 ft. spool
124-008	No. 175	.175"	45 lbs.	48-49	500 ft. spool
124-A03-1M	No. 10	3/16"	45 lbs.	48-49	500 ft. spool
124-022	No. 13	1/4"	90 lbs.	37	250 ft. spool

### TYPE "A" COUPLINGS

Used to attach BALL CHAIN retaining chain with a screw, bolt, or rivet, i.e. filler caps, dust caps, etc. Offset coupling provides flush assembly. **BRASS - Nickel Plated Finish.**

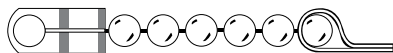
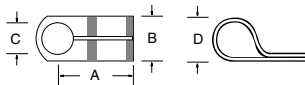


SPAENAUR No.	HOLE DIAMETER (A) W/EYELET	LENGTH (B)	CHAIN SIZE
124-012	.130"	13/32"	3-6
124-013	.193"	9/16"	8-10

PKG QTY. 100

### TYPE "D" COUPLINGS

Has same general use as "A" Couplings. Provides a flexible, swiveling, permanent attachment.



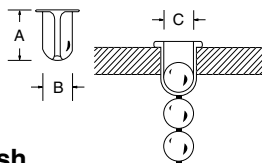
### BRASS - Nickel Plated Finish

SPAENAUR No.	LENGTH (A)	WIDTH (B)	HOLE DIAMETER (C)	HEIGHT (D)	FOR CHAIN SIZE
124-014	19/64"	17/64"	.130" & .170"	11/64"	3-6
124-A01-1K	31/64"	23/64"	.190" & .250"	1/4"	6-8-10

PKG QTY. 100

### DETACHABLE SLEEVES

Used to retain with BALL CHAIN to pens, electrical outlet caps, etc.

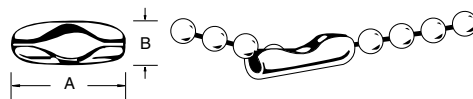


### BRASS - Nickel Plated Finish

SPAENAUR No.	LENGTH (A)	DIAMETER (B)	HOLE SIZE FOR SLEEVE (C)	FOR CHAIN SIZE	PKG QTY.
124-017	13/64"	1/8"	.116"	2-3	100
124-018	13/64"	5/32"	.149"	3-6	100
124-019	9/32"	15/64"	.221"	6-8-10	100

### CONNECTORS

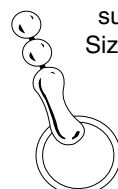
Used to join ends of Ball Chain to make endless assemblies for Key Chains, Neck Chains, etc. Also acts as connecting link to splice lengths of chain.



### BRASS - Nickel Plated Finish

SPAENAUR No.	LENGTH (A)	DIAMETER (B)	FOR CHAIN SIZE	PKG QTY.
124-009	11/32"	1/8"	1-2-3	100
124-010	7/16"	11/64"	6	100

### TYPE "B" COUPLINGS

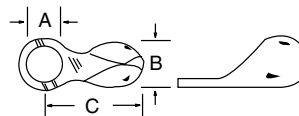


Used with jump rings to attach parts such as sink stoppers, etc. to BALL CHAIN. Size of hole makes it possible to form adjustable loop at end of chain; ideal for use on damper control and merchandising displays. May also be used to join ends of chain to make endless assemblies.

### BRASS - Nickel Plated Finish

SPAENAUR No.	LENGTH (A)	DIAMETER (B)	FOR CHAIN SIZE	PKG QTY.
124-011	5/8"	1/4"	8-10	100
124-025	47/64"	23/64"	10-13	100

### END RING CONNECTORS



Used for the same general purpose as "A" Couplings.

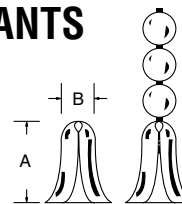
PKG QTY. 100

### BRASS - Nickel Plated Finish

SPAENAUR No.	HOLE SIZE (A)	DIAMETER (B)	LENGTH (C)	FOR CHAIN SIZE
124-016	.140"	3/16"	25/64"	No. 3-6

### DETACHABLE PENDANTS

Used mainly as pull for electric lighting socket extension chains, convector controls, etc. Can be used as a retainer.



### BRASS - Nickel Plated Finish

SPAENAUR No.	LENGTH (A)	DIAMETER (B)	FOR CHAIN SIZE	PKG QTY.
124-020	13/32"	1/4"	3-6-8-10	100
124-021	5/8"	9/16"	10-13	100