

Inch

Automotive Flat Shims

Pouce

Cales plates pour automobiles

Steel - Zinc Plated

| Illustration | SPAENAUR No. | Thickness | PKG QTY. | Description and Application |
|--------------|--|---|--------------------------------|--|
| | W-134SH | 1/8" | 25 | <p><i>BALL-JOINT SHIMS</i> For Oldsmobile 1957-'73</p> |
| | <p>W-300SH W-138SH W-140SH</p> | <p>1/64" 1/32" 1/8"</p> | <p>25 25 25</p> | <p><i>BALL-JOINT SHIMS</i> For Ford, Meteor 1957-'73 Checker 1957-'73</p> |
| | <p>602-A02-1Y 602-A03-1C W-8SH W-9SH</p> | <p>1/64" 1/32" 1/16" 1/8"</p> | <p>50 50 50 50</p> | <p><i>BALL-JOINT SHIMS</i> For Ford Products Cars 1954-'79 and Universal use</p> |
| | <p>*W-182SH W-184SH</p> | <p>1/32" 1/8"</p> | <p>25 25</p> | <p><i>UNIVERSAL BODY SHIMS</i> For ALL Cars * Slot Depth .850" ± .015625"</p> |

D

CATALOG 14 SPAENAUR

Continues on Next Page

Automotive Flat Shims

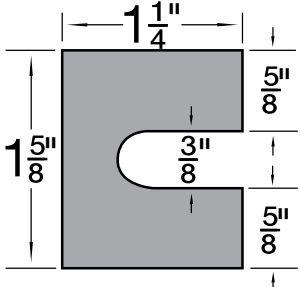
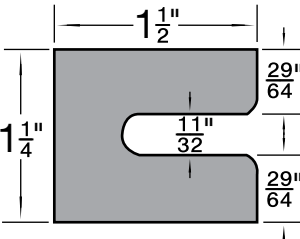
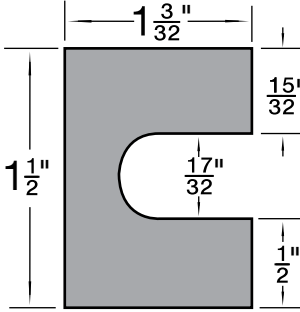
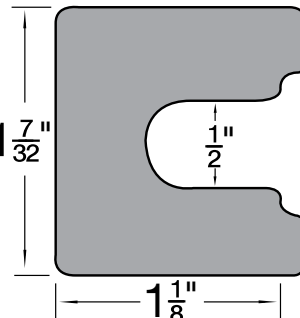
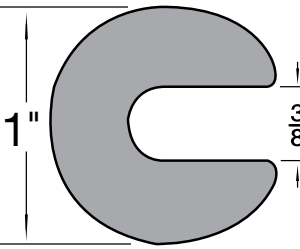
Inch

Cales plates pour automobiles

Pouce

Steel - Zinc Plated

D

| Illustration | SPAENAUR No. | Thickness | PKG QTY. | Description and Application |
|---|--|---|--------------------------------|--|
|  | <p>602-431 W-164SH</p> | <p>1/16" 1/8"</p> | <p>25 50</p> | <p><i>BODY SHIM</i> <i>General Purpose</i></p> |
|  | <p>B-1360</p> | <p>.080"</p> | <p>50</p> | <p><i>ALL PURPOSE SHIM</i></p> |
|  | <p>W-301SH W-302SH W-303SH W-304SH</p> | <p>1/64" 1/32" 1/16" 1/8"</p> | <p>50 50 50 25</p> | <p><i>BALL-JOINT SHIMS</i> <i>Mustang 1965 - 1966</i></p> |
|  | <p>602-412 602-413 602-414</p> | <p>1/32" 1/16" 1/8"</p> | <p>25 25 25</p> | <p><i>BALL-JOINT SHIMS</i> <i>Chevrolet 1971-'79</i></p> |
|  | <p>W-148 602-A04-1N 602-A01-1P</p> | <p>1/32" 1/16" 1/8"</p> | <p>100 100 100</p> | <p><i>WASHER SHIM</i> <i>All Purpose Universal All cars</i> <i>1963-79</i></p> <p>Continues on Next Page</p> |

SPAENAUR CATALOG 14

Inch

Automotive Flat Shims

Pouce

Cales plates pour automobiles

Steel - Zinc Plated

| Illustration | SPAENAUR No. | Thickness | PKG QTY. | Description and Application |
|--------------|---|---------------------------------|-------------------------|---|
| | <p>602-396 602-397 602-398</p> | <p>1/32" 1/16" 1/8"</p> | <p>25 25 25</p> | <p><i>BALL-JOINT SHIMS</i> <i>Chev. & Chevelle Com.</i> <i>1971-1979</i></p> |
| | <p>602-399 602-411</p> | <p>1/32" 1/8"</p> | <p>25 25</p> | <p><i>BALL-JOINT SHIMS</i> <i>Chev. & GMC Heavy Trucks</i> <i>1963-1973</i></p> |
| | <p>602-415 602-416</p> | <p>1/16" 1/8"</p> | <p>25 25</p> | <p><i>FENDER TAB SHIMS</i> <i>Buick 1965-1973</i></p> |
| | <p>602-428 602-417</p> | <p>1/32" 1/16"</p> | <p>50 50</p> | <p><i>SHIMS</i> <i>Fiat & Small Foreign Cars</i> <i>1970-1979</i></p> |

D

CATALOG 14 SPAENAUR

Continues on Next Page

Automotive Flat Shims

Inch

Cales plates pour automobiles

Pouce

Continued from Previous Page

Steel - Zinc Plated

| Illustration | SPAENAUR No. | Thickness | PKG QTY. | Description and Application |
|--------------|---|---|---|---|
| | <p>602-429 W-14SH *W-15SH W-17SH</p> | <p>1/64" 1/32" 1/16" 3/16"</p> | <p>25 50 50 25</p> | <p><i>CASTER-CAMBER SHIMS</i> For Chevrolet, Pontiac 1955-1970 Corvair '60-62</p> <p>*dashed line on drawing is the cut out for this part number.</p> |
| | <p>W-135SH W-136SH W-192SH</p> | <p>.060" .080" .164"</p> | <p>25 25 25</p> | <p><i>BALL-JOINT SHIMS</i> For Buick, Pontiac 1957-1973</p> |
| | <p>602-430</p> | <p>1/64"</p> | <p>25</p> | <p><i>UNIVERSAL BALL-JOINT SHIMS</i> Fit all bolt sizes</p> |
| | <p>W-217SH W-218SH W-219SH</p> | <p>1/32" 1/16" 1/8"</p> | <p>25 25 25</p> | <p><i>CASTER-CAMBER SHIMS</i> Corvair 1961 - 1968</p> |
| | <p>602-424</p> | <p>1/64"</p> | <p><i>REAR SUSPENSION SHIM</i> GM Cars 1963-1979</p> <p>Continues on Next Page</p> | |

D

SPAENAUR CATALOG 14

Inch

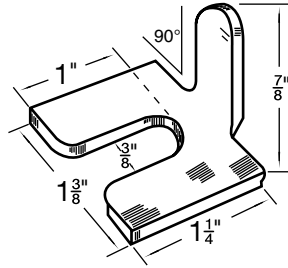
Automotive Flat Shims / Beveled Washers

Pouce

Cales plates pour automobile / Rondelles biseautées

BODY SHIM STEEL—Zinc Plated

| SPAENAUR No. | Thickness |
|--------------|-----------|
| 602-422 | 1/16" |
| 602-423 | 1/8" |



Shim, Body at Hinge to Fender Reinforcement, Lower Fender Reinforcement to Body.

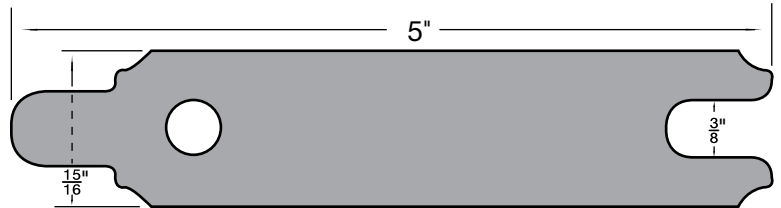
Chevrolet, Oldsmobile, Buick, Pontiac — 1977-1979.

PKG QTY. 25

ALIGNING SHIMS FOR STARTERS

CHEVROLET, OLDSMOBILE, BUICK, PONTIAC
ALL G.M. CARS 1970-1979

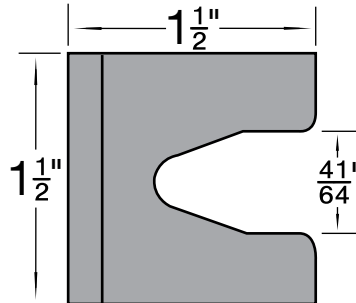
| STEEL Zinc Plated | SPAENAUR No. | Thickness |
|-------------------|--------------|-----------|
| PKG QTY. 25 | 602-419 | 1/64" |
| | 602-420 | 1/32" |
| | 602-421 | 1/16" |



UNIVERSAL
"BREAK-OFF" SHIM

SPAENAUR No.
W-321SH

.065" Thick



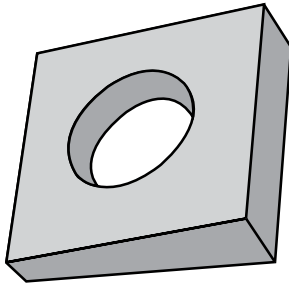
FOR ALL BOLT SIZES—
3/8", 7/16", 1/2", 9/16", 5/8" and 21/32"

Break-Off Feature For Added Application
in Hard-To-Shim Areas.

PKG QTY. 50

MALLEABLE IRON BEVELED WASHERS

16-2/3% Slope

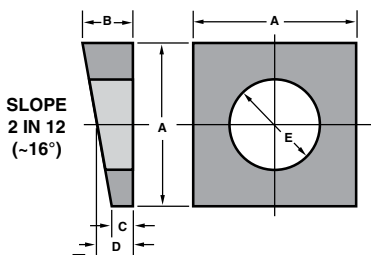


Plain Finish

| SPAENAUR No. | Bolt Dia. | Across Flats (Square) | Thickness at Large End | Thickness at Taper | Hole Dia. | PKG QTY. |
|--------------|-----------|-----------------------|------------------------|--------------------|-----------|----------|
| 635-001 | 1/4" | 11/16" | 7/32" | 5/64" | 5/16" | 50 |
| W-289 | 3/8" | 1-1/4" | 11/32" | 5/32" | 7/16" | 50 |
| W-290 | 1/2" | 1-1/4" | 11/32" | 5/32" | 9/16" | 50 |
| 635-A01-1K | 5/8" | 1-1/2" | 13/32" | 5/32" | 11/16" | 25 |
| W-292 | 3/4" | 1-1/2" | 13/32" | 5/32" | 13/16" | 25 |
| W-293 | 7/8" | 2" | 1/2" | 7/32" | 15/16" | 10 |
| W-294 | 1" | 2" | 9/16" | 7/32" | 1-3/32" | 10 |

ALUMINUM (Alloy 319) BEVELED WASHERS

TYPE A - Plain Finish



| SPAENAUR No. | BOLT DIA. | A | B | C | D | HOLE DIA. E | PKG QTY. |
|--------------|-----------|-------|-------|-------|-------|-------------|----------|
| 635-300 | 1/4" | 0.69" | 0.22" | 0.09" | 0.16" | 0.31" | 100 |
| 635-301 | 5/16" | 1.00" | 0.31" | 0.16" | 0.23" | 0.38" | 100 |
| 635-302 | 3/8" | 1.25" | 0.34" | 0.12" | 0.23" | 0.44" | 50 |
| 635-303 | 1/2" | 1.25" | 0.34" | 0.12" | 0.23" | 0.56" | 50 |
| 635-304 | 5/8" | 1.50" | 0.38" | 0.12" | 0.25" | 0.69" | 25 |
| 635-305 | 3/4" | 1.50" | 0.44" | 0.19" | 0.31" | 0.81" | 25 |

CATALOG 14

SPAENAUR