

Inch

**Rear Door / Heavy Duty Hinges**

Pouce

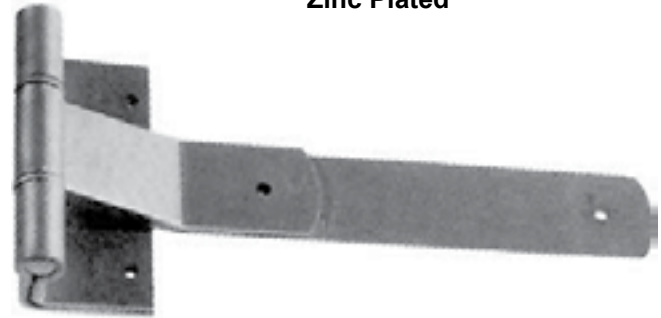
Charnières de porte arrière / service intensif

**REAR DOOR HINGES**

**ALL STEEL**  
Zinc Plated

PKG QTY. 1

All steel, these hinges allow full 270° opening to enable door to swing parallel with side of body.  
Universal for right or left-hand doors.



**Specification:**

- Bracket — 5" wide.
- Pin — 1/2" diameter steel - non-removable.
- Steel thrust washers.
- Mounting holes for 1/4" screws.
- Available from flush to 1/2" offset.
- Specify offset required.

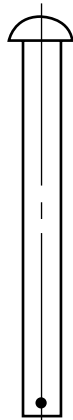
SPAENAUR No.	Style	Strap Length	Screw Holes in Strap
<b>099-070</b>	Flush	12"	2
<b>099-071</b>	1/2" Offset	12"	2
<b>099-072</b>	Flush	16"	3
<b>099-073</b>	1/2" Offset	16"	3

**ALL STEEL HEAVY DUTY HINGES**

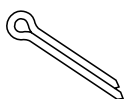
For trailer and container doors. Available in plain, bright zinc plated or hot dipped galvanized. Available with or without mounting holes. Supplied with mounting hole patterns as shown.

1/2" Dia. Clevis Pin & Cotter Pin

Clevis and Cotter Pin shown here can be ordered separately to convert the hinges shown in the chart (at right).



Clevis Pin  
**233-013**  
PKG QTY. 1



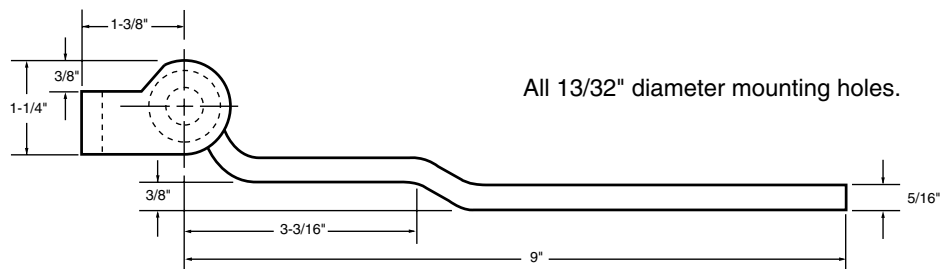
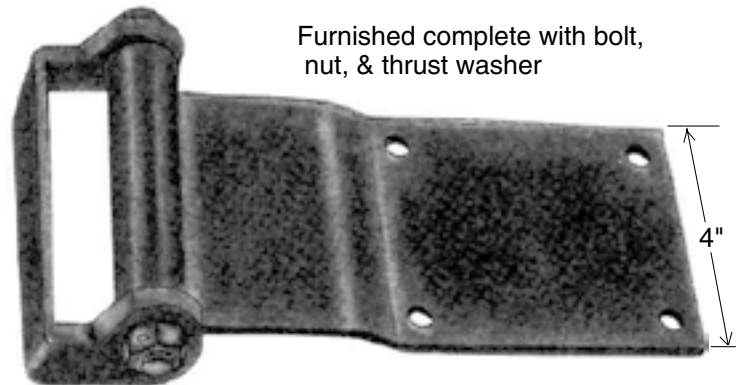
Cotter Pin 1/8" x 1-1/4"  
**091-A11-1K** PKG QTY. 100

PKG QTY. 1

SPAENAUR No.	Mtg. Holes	Finish
<b>099-074</b>	0	Zinc
<b>099-075</b>	3	Zinc
<b>099-076</b>	4	Zinc
<b>099-077</b>	5 or 6	Zinc

Adaptable for Right or Left

Furnished complete with bolt, nut, & thrust washer



All 13/32" diameter mounting holes.