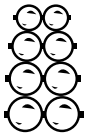


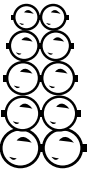
STANDARD BALL CHAIN

STEEL- Nickel Plated Finish (*304 Stainless Steel)



SPAENAU No.	CHAIN NUMBER	DIAMETER	AVERAGE TENSILE STRENGTH	BALLS PER FOOT (APPROX.)	UNIT PACKAGE QUANTITY
124-001	No. 3	3/32"	20 lbs.	91-94	1000 ft. spool
124-002	No. 6	1/8"	30 lbs.	69-70	1000 ft. spool
124-004	No. 175	.175"	45 lbs.	48-49	500 ft. spool
124-003	No. 10	3/16"	45 lbs.	48-49	500 ft. spool
*124-800	No. 10	3/16"	80 lbs.	48-49	500 ft. spool

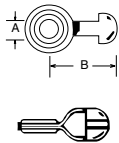
BRASS - Nickel Plated Finish



SPAENAU No.	CHAIN NUMBER	DIAMETER	AVERAGE TENSILE STRENGTH	BALLS PER FOOT (APPROX.)	UNIT PACKAGE QUANTITY
124-005	No. 3	3/32"	20 lbs.	92-95	1000 ft. spool
124-006	No. 6	1/8"	30 lbs.	69-70	1000 ft. spool
124-008	No. 175	.175"	45 lbs.	48-49	500 ft. spool
124-007	No. 10	3/16"	45 lbs.	48-49	500 ft. spool
124-022	No. 13	1/4"	90 lbs.	37	250 ft. spool

TYPE "A" COUPLINGS

Used to attach BALL CHAIN retaining chain with a screw, bolt, or rivet, i.e. filler caps, dust caps, etc. Offset coupling provides flush assembly. **BRASS - Nickel Plated Finish.**

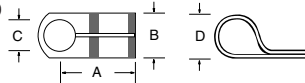


SPAENAU No.	HOLE DIAMETER (A) W/EYELET	LENGTH (B)	CHAIN SIZE
124-012	.130"	13/32"	3-6
124-013	.193"	9/16"	8-10

Unit Package Quantity - 100

TYPE "D" COUPLINGS

Has same general use as "A" Couplings. Provides a flexible, swiveling, permanent attachment.



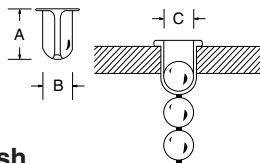
BRASS - Nickel Plated Finish

SPAENAU No.	LENGTH (A)	WIDTH (B)	HOLE DIAMETER (C)	HEIGHT (D)	FOR CHAIN SIZE
124-014	19/64"	17/64"	.130" & .170"	11/64"	3-6
124-015	31/64"	23/64"	.190" & .250"	1/4"	6-8-10

Unit Package Quantity - 100

DETACHABLE SLEEVES

Used to retain with BALL CHAIN to pens, electrical outlet caps, etc.

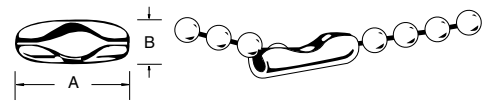


BRASS - Nickel Plated Finish

SPAENAU No.	LENGTH (A)	DIAMETER (B)	HOLE SIZE FOR SLEEVE (C)	FOR CHAIN SIZE	UNIT PACKAGE QUANTITY
124-017	13/64"	1/8"	.116"	2-3	100
124-018	13/64"	5/32"	.149"	3-6	100
124-019	9/32"	15/64"	.221"	6-8-10	100

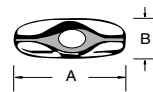
CONNECTORS

Used to join ends of Ball Chain to make endless assemblies for Key Chains, Neck Chains, etc. Also acts as connecting link to splice lengths of chain.



BRASS - Nickel Plated Finish

SPAENAU No.	LENGTH (A)	DIAMETER (B)	FOR CHAIN SIZE	UNIT PKG. QTY.
124-009	11/32"	1/8"	1-2-3	100
124-010	7/16"	11/64"	6	100



TYPE "B" COUPLINGS

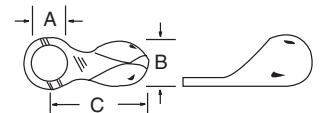


Used with jump rings to attach parts such as sink stoppers, etc. to BALL CHAIN. Size of hole makes it possible to form adjustable loop at end of chain; ideal for use on damper control and merchandising displays. May also be used to join ends of chain to make endless assemblies.

BRASS - Nickel Plated Finish

SPAENAU No.	LENGTH (A)	DIAMETER (B)	FOR CHAIN SIZE	UNIT PKG. QTY.
124-011	5/8"	1/4"	8-10	100
124-025	47/64"	23/64"	10-13	100

END RING CONNECTORS



Used for the same general purpose as "A" Couplings.

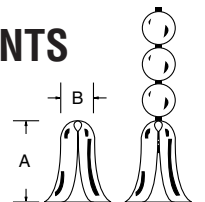
BRASS - Nickel Plated Finish

SPAENAU No.	HOLE SIZE (A)	DIAMETER (B)	LENGTH (C)	FOR. CHAIN SIZE
124-016	.140"	3/16"	25/64"	No. 3-6

Unit Package Quantity - 100

DETACHABLE PENDANTS

Used mainly as pull for electric lighting socket extension chains, convector controls, etc. Can be used as a retainer.



BRASS - Nickel Plated Finish

SPAENAU No.	LENGTH (A)	DIAMETER (B)	FOR CHAIN SIZE	UNIT PKG. QTY.
124-020	13/32"	1/4"	3-6-8-10	100
124-021	5/8"	9/16"	10-13	100

Other materials and finishes are available. Our sales staff would be pleased to follow-up on your enquiries.