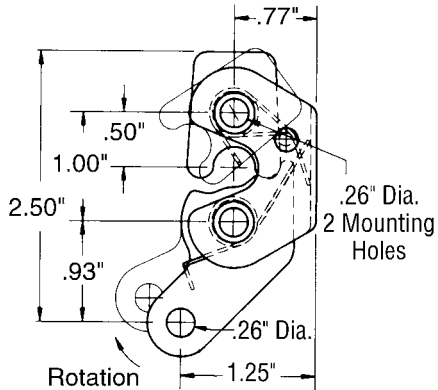
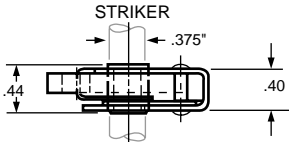
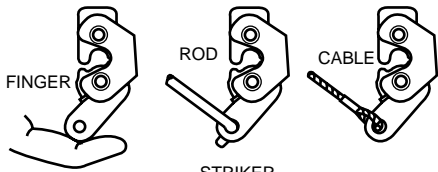


Three methods of release.



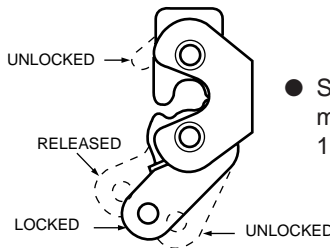
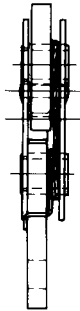
Compact Rotary Slam Latch

099-153 (Mfr. #200)
STEEL - Electro Zinc Finish

099-800 (Mfr. #200SS)
304 STAINLESS STEEL

Latch Pawls are Carbon Steel with black coating.

- Recommended for small hoods, lids, doors, or panels.
- Universal mounting.
- Easily mounted with two 1/4" bolts.
- Receives any 3/8" dia. striker.



- Suggested maximum load 100 lbs.



WARNING
This product must not be used for personal restraint applications.

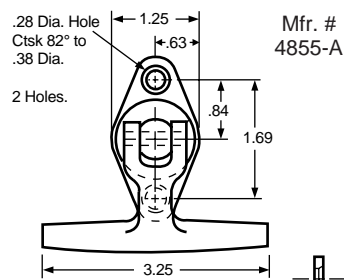
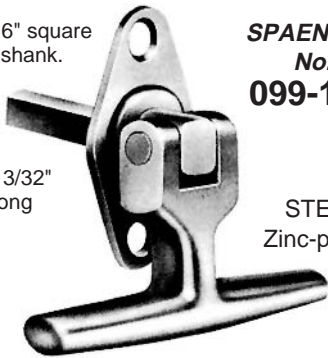
Folding-T Handle with attached stamped steel escutcheon. A concealed stainless steel spring holds the zinc die-cast handle in the folded position.

5/16" square shank.

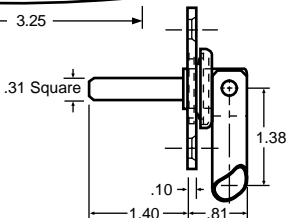
SPAENAUR
No. **099-197**

1-13/32" long

STEEL
Zinc-plated



Mfr. # 4855-A



Weight: 0.4 lbs.

Rotary Paddle Lock (Slam Latch)

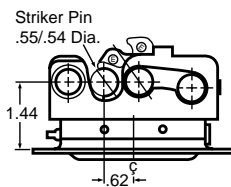
The new Key-locking rotary paddle lock was designed for a wide variety of applications requiring a durable means of positive latching, incorporating the industry standard paddle latch configuration with the positive latching features of our two-stage rotary. Striker pin 099-217 (Page L71, Mfr. # 2-400-10) is recommended.

099-193 STEEL
(Mfr. # 4373) Zinc Plated

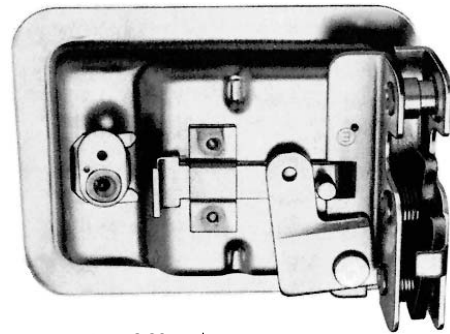
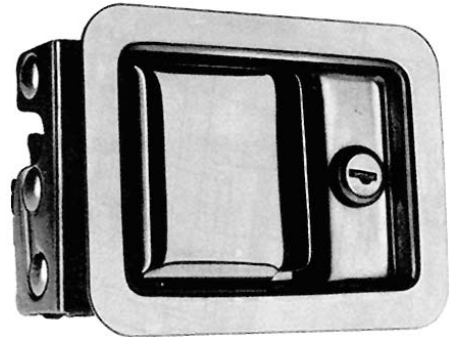
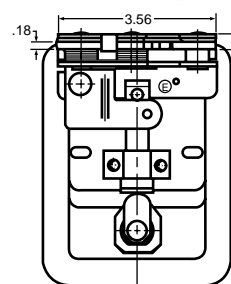
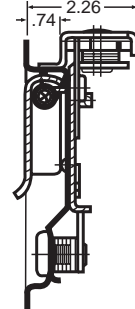
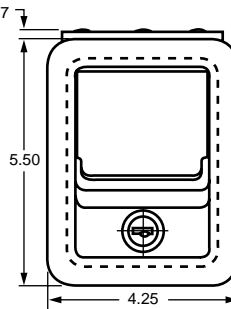
099-194 STAINLESS STEEL
(Mfr. # 3-4373SS) Bright Polished

099-194 includes four 11/64" dia. mounting holes on 3-3/4" x 3-13/16" hole centres.

Non-Locking and Mounting Hole Versions are available.



Weight: 1.37 lbs.



CATALOG 13