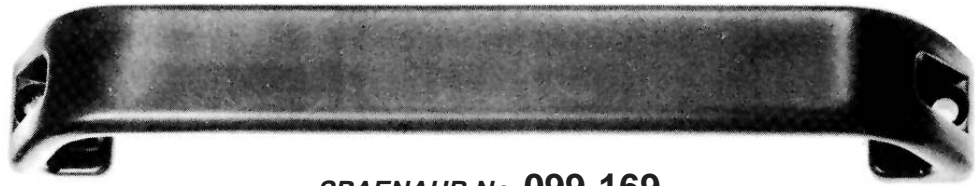


Zinc Die Cast
Black Powder
Coat Finish



SPAENAU No. 099-169

An immensely strong handle for exterior use.

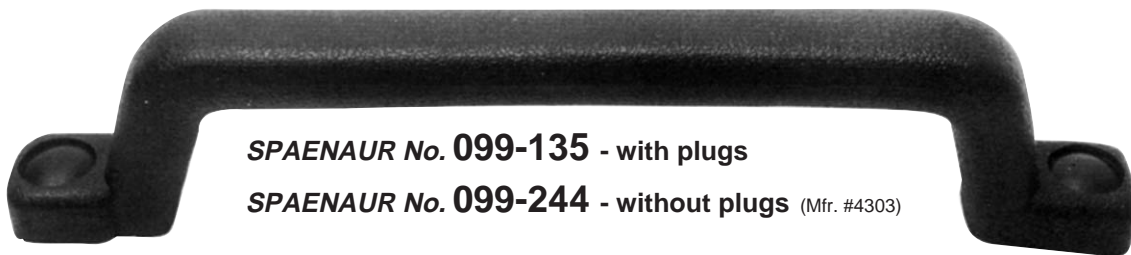
Fixing is by external screws, but holes are countersunk within recesses at each end.

Overall Length: 10" Holes (c. to c.): 9.4"
Dia. of Holes: .258" Height Under Grip: 1"
Section Dimensions: 1.3" width x 0.35" thickness

Priced Singly

Weight 21.75 oz

These durable stamped steel handles are covered with a heavy corrosion-resistant, black, polyurethane coating.

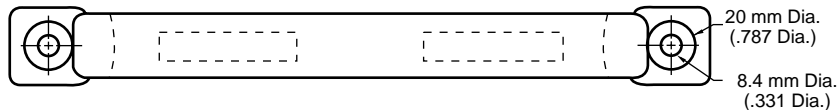


SPAENAU No. 099-135 - with plugs

SPAENAU No. 099-244 - without plugs (Mfr. #4303)

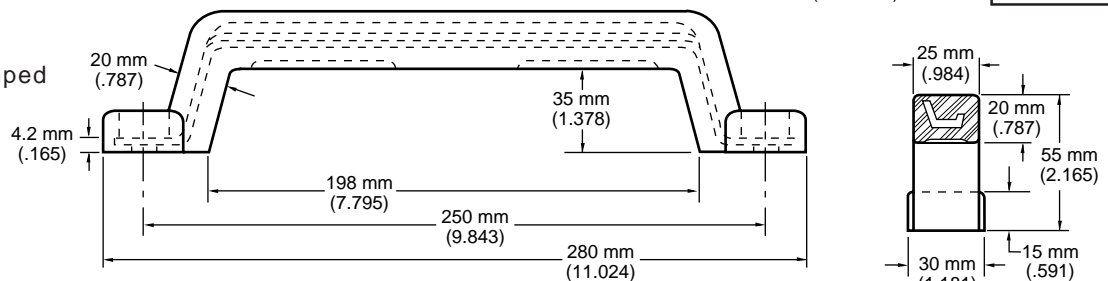
Priced Singly

Overall Length: 11"
Holes (C to C): 9-3/4"



Dimensions:
mm
(Inch)

Durable stamped steel handle.



Attractive Textured Plugs are included to conceal fixing holes.



SPAENAU No. 099-134

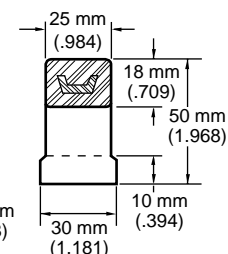
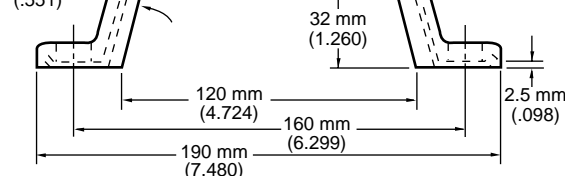
Priced Singly

Overall Length: 7-1/2"
Holes (C to C): 6-5/16"

14 mm Dia. (.551 Dia.)

8.4 mm Dia. (.331 Dia.)

14 mm (.551)



Ideal for roll-up doors, engine housings, compartments, compressors, refrigerators, etc.

CATALOG 13