

### ONE PIECE QUARTER TURN FASTENER (Metallic)

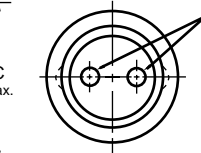
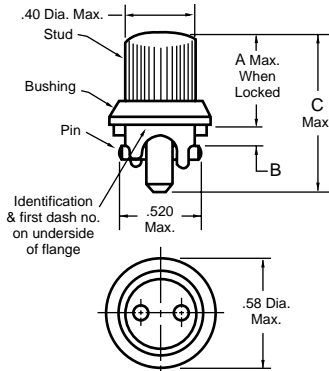
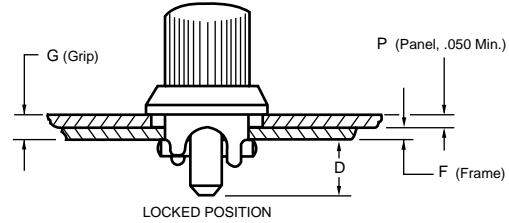


approx. 1-1/4 size

Unit Package 10

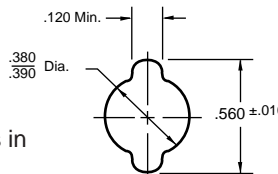
SPAENAU No.	Grip Range	A Max.	B	C Max.	D Max.	Wt. lbs./100
110-021	.081-.130"	.540"	.073-.081"	.77"	.19"	1.56
110-022	.131-.180"	.540"	.123-.131"	.87"	.24"	1.68

<b>MATERIAL:</b>	Stud & Bushing Pin	Zinc Alloy High Carbon Steel
<b>FINISH:</b>	Stud & Bushing Pin	Zinc Plated with Clear Chromate Cadmium Plated

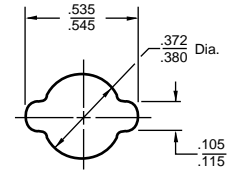


Common  $\phi$  of dots coincides with the  $\phi$  of the cross pin. This may be used as an indication of when the fastener is locked.

Illustration Dimensions in Inches.



**FRAME MOUNTING HOLE**  
Preparation (See Note 2)



**PANEL MOUNTING HOLE**  
Preparation (See Note 2)

1. To install fastener assembly into panel; insert fastener assembly into mounting hole with lugs fitting into lug hole. Press down and rotate stud 1/4 turn CCW. This installs the fastener captive to the outer panel. To fasten panel to frame; insert fastener assembly into frame mounting hole, press down and rotate 1/4 turn CW.
2. If close  $\phi$  alignment is maintained the frame mounting hole preparation may be the same as the panel mounting hole, except that the common  $\phi$  of the frame lug holes is located 90° from the common  $\phi$  of the panel lug holes. If any mis-alignment condition is anticipated, the frame mounting hole should be as shown.

### PLASTIC QUARTER TURN FASTENER



approx. size

SPAENAU No.	Grip Range	Colour	Min. Panel Thk.
110-023	.081-.260"	White	.050"
110-024	.081-.260"	Black	.050"

Illustration Dimensions in Inches.

Material:  
Acetal-  
copolymer

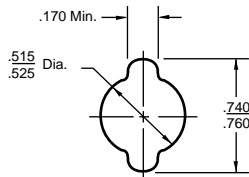
Unit  
Package  
10

#### FEATURES

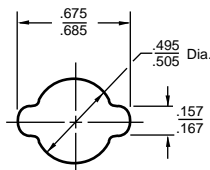
1. ONE SIZE COVERS ENTIRE GRIP RANGE OF .081" THRU .260".
2. ONE PIECE FASTENER (NO SEPARATE RECEPTACLE NEEDED).
3. ACCOMMODATES "BLIND-HOLE" INSTALLATION.
4. FINGER INSTALLED IN SECONDS (NO TOOLS REQUIRED).

#### INSTALLATION DATA

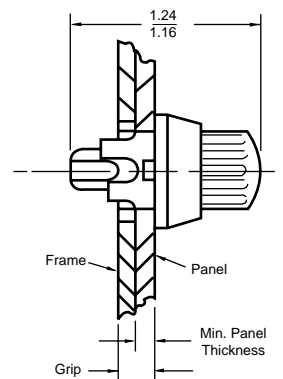
1. To install fastener assembly into panel; insert fastener assembly into mounting hole with lugs fitting into lug hole. Press down and rotate stud 1/4 turn CCW. This installs the fastener captive to the outer panel. To fasten panel to frame; insert fastener assembly into frame mounting hole, press down and rotate 1/4 turn CW.
2. If close  $\phi$  alignment is maintained the frame mounting hole preparation may be the same as the panel mounting hole, except that the common  $\phi$  of the frame lug holes is located 90° from the common  $\phi$  of the panel lug holes. If any mis-alignment condition is anticipated, the frame mounting hole should be as shown.



**FRAME MOUNTING HOLE**  
Preparation (See Note 2)



**PANEL MOUNTING HOLE**  
Preparation (See Note 2)



See table for grip and minimum panel thickness

CATALOG 13