

D-1411,-12-13 Series CAM LOCKS

For steel cabinets, lockers, drawers, office equipment, control panels, vending machines, meters, etc. Featuring attractive square escutcheon design. 3/4" long under escutcheon to locking cam. Locking cams can be assembled in four different positions by the user: 90°-180°-270°-360°. Standard straight cam as shown. (Other cams available to special order.)

180° movement of key one way, either clockwise or anti-clockwise as required, key being free in both positions. (Other movements available to special order.)

FIXING: The lock is fixed by means of a double pronged spring clip, specially designed to permit secure fixing by the quickest possible means and without having to take off the locking cam. The lock is offered to a fixing hole (formed to the dimensions on the drawing) and pushed home. The lock can be used on any material thicknesses from .024" to .080". (.61 mm to 2.03 mm). A special removal tool may be supplied if required (to special order).

ZINC BASE
DIE-CASTINGS

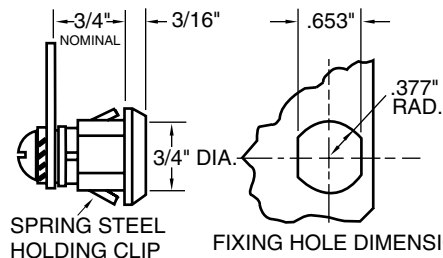
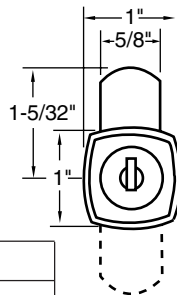
Chrome Plated
Finish



P.C. 096

To order Master Keys
and for Additional
data see Page L2.

All items Priced Singly



SPAENAU No.			Description
For Material Thickness			
.024"-.048"	.048"-.072"	.073"-.080"	
D-1411	D-1412	D-1413	Cam lock, with 2 keys, all to differ.
D-1411KA	D-1412KA	D-1413KA	Cam lock, with 2 keys, all keyed alike.
D-1411MK	D-1413MK		Cam lock, master keyed, with 2 keys, all to differ.

Series 92

D-3006 Series CAM LOCKS

For steel and wooden cabinets, lockers, drawers, office furniture and equipment, cubicles, control panels, vending machines, meters, etc. Manufactured to English standards. 3/4" long under escutcheon to locking cam. Locking cams can be assembled in four different positions by the user: 90°-180°-270°-360°. Standard straight cam as shown. (Other cams available to special order). 90° clockwise movement of the key from the locked position. **Key is retained in lock in unlocked position.** (Other movements available to special order.)

ZINC BASE
DIE-CASTINGS

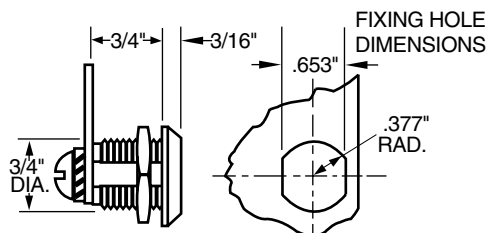
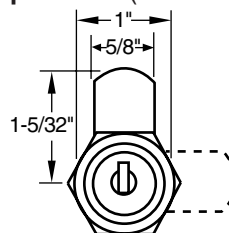
Chrome
Plated
Finish



P.C. 096

To order Master Keys
and for Additional
data see Page L2.

All Items
Priced Singly.



SPAENAU No.	Description
D-3006	Cam lock, with 2 keys, all to differ.
D-3006KA	Cam lock, with 2 keys, all keyed alike.
D-3006MK	Cam lock, master keyed, with 2 keys, all to differ.

Series 92

CATALOG 13

Cam will fit Cam Lock Series:

- D-1411, See this page.
- D-1414, on following page.
- D-3006, See this page.
- 110-154, See page L15.

SPAENAU No. 110-155

Straight Notched Cam

Steel, Heat Treated, Zinc (Yellow) Pltd.
Unit Pkg. Qty. 10

