

ALL MOUNTS ON THIS PAGE ARE OF VULCANIZED NR NATURAL RUBBER, IN DUROMETER 50-60

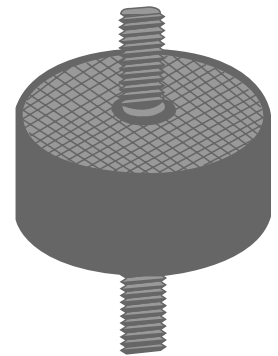
**Vibration Mounts**

THE STEEL COMPONENTS ARE ZINC OR CADMIUM PLATED, USUALLY WITH DICHROMATE FINISH

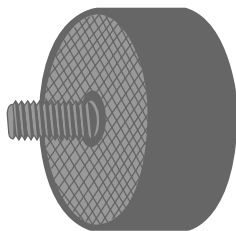
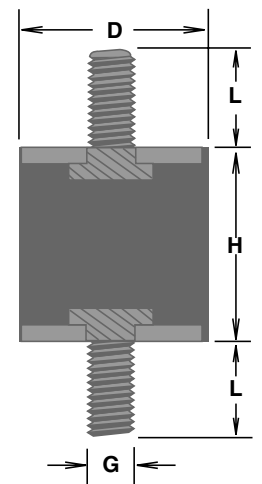
All Dimensions in Millimetres

Metric Coarse Thread

| SPAENAUR No. | D Diameter | H Height | G Thread   | L Length | Unit Package |
|--------------|------------|----------|------------|----------|--------------|
| 316-001      | 10         | 10       | M4 x 0.70  | 10       | 25           |
| 316-036      | 10         | 15       | M4 x 0.70  | 10       | 25           |
| 316-002      | 15         | 12       | M4 x 0.70  | 10       | 25           |
| 316-034      | 15         | 15       | M4 x 0.70  | 10       | 25           |
| 316-039      | 15         | 15       | M5 x 0.80  | 15       | 25           |
| 316-040      | 15         | 15       | M6 x 1.00  | 15       | 25           |
| 316-041      | 20         | 8        | M6 x 1.00  | 11       | 25           |
| 316-003      | 20         | 20       | M6 x 1.00  | 15       | 25           |
| 316-042      | 20         | 40       | M6 x 1.00  | 15       | 10           |
| 316-043      | 25         | 10       | M6 x 1.00  | 20       | 4            |
| 316-044      | 25         | 15       | M6 x 1.00  | 20       | 25           |
| 316-004      | 25         | 25       | M6 x 1.00  | 15       | 20           |
| 316-045      | 25         | 30       | M6 x 1.00  | 15       | 10           |
| 316-046      | 25         | 30       | M8 x 1.25  | 20       | 10           |
| 316-047      | 25         | 40       | M6 x 1.00  | 20       | 10           |
| 316-005      | 30         | 20       | M8 x 1.25  | 20       | 20           |
| 316-031      | 30         | 30       | M8 x 1.25  | 20       | 10           |
| 316-048      | 30         | 45       | M8 x 1.25  | 20       | 10           |
| 316-006      | 40         | 30       | M8 x 1.25  | 20       | 10           |
| 316-007      | 50         | 20       | M10 x 1.50 | 30       | 10           |
| 316-008      | 50         | 30       | M10 x 1.50 | 30       | 10           |
| 316-049      | 65         | 35       | M10 x 1.50 | 25       | 10           |
| 316-050      | 75         | 20       | M10 x 1.50 | 25       | 10           |
| 316-051      | 75         | 40       | M12 x 1.75 | 37       | 2            |
| 316-064      | 75         | 50       | M12 x 1.75 | 37       | 2            |
| 316-009      | 75         | 55       | M12 x 1.75 | 37       | 2            |
| 316-010      | 100        | 60       | M16 x 2.00 | 37       | 1            |

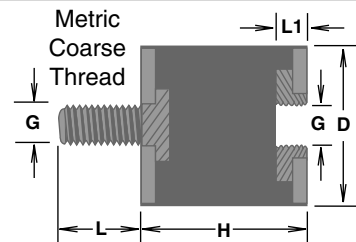


Style No. 1  
DOUBLE-ENDED



**Vibration Mounts**  
**Style No. 2**  
**SINGLE ENDED**  
Plus  
Threaded Insert

All Dimensions in Millimetres



This style has threaded insert opposite stud end

| SPAENAUR No. | D Diameter | H Height | G Thread   | L Length | L1 Length | Unit Package |
|--------------|------------|----------|------------|----------|-----------|--------------|
| 316-011      | 15         | 15       | M4 x 0.70  | 10       | 4         | 25           |
| 316-065      | 20         | 15       | M6 x 1.00  | 15       | 6         | 25           |
| 316-012      | 20         | 20       | M6 x 1.00  | 15       | 6         | 25           |
| 316-013▲     | 30         | 20       | M8 x 1.25  | 20       | 7         | 20           |
| 316-018      | 30         | 30       | M8 x 1.25  | 20       | 7         | 4            |
| 316-014      | 40         | 30       | M8 x 1.25  | 20       | 7         | 10           |
| 316-052      | 50         | 20       | M10 x 1.50 | 30       | 11        | 10           |
| 316-015      | 50         | 40       | M10 x 1.50 | 30       | 11        | 4            |
| 316-053      | 65         | 35       | M10 x 1.50 | 25       | 10        | 4            |
| 316-055      | 75         | 45       | M10 x 1.50 | 37       | 13        | 2            |
| 316-054      | 75         | 40       | M12 x 1.75 | 37       | 13        | 2            |
| 316-016      | 75         | 50       | M12 x 1.75 | 37       | 13        | 2            |
| 316-056      | 75         | 55       | M12 x 1.75 | 37       | 13        | 2            |

Note:  
Other sizes and styles are available on a custom-made basis in production quantities.

More  
VIBRATION MOUNTS,  
RUBBER BUMPERS,  
GROMMETS, etc.,  
in this Section.

▲ Without Internal Base Plate Stop.