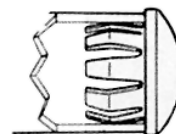




ROUND TUBING TYPE

APPLICATION

Designed to fit tube ends in furniture tubing, etc. Provides a trim finished appearance, and protects floors from sharp tube ends.



HIGH CARBON STEEL

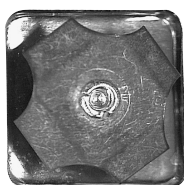
More Metal Plug Buttons on pages H2 to H4. For Nylon Plug Button see pages J2 and J3.

Tube Size		O.D. of Plug Button Head	Plug Button Material	Bare Metal		Finished		Unit Pkg. Qty.
I.D.	O.D.			SPAENAUR No.	Mfr. No.	SPAENAUR No.	Finish	
.500-.562"	5/8"	5/8"	Steel	B-1733	HS-51355	B-1733-N	Nickel	50
.620-.680"	3/4"	3/4"	Steel	B-1684-PS	HS-51260	B-1684	Nickel	50
.796"	7/8"	7/8"	Steel	243-009	HS-51247	243-010	Nickel	50
.875-.900"	1"	63/64"	Steel	B-1732-PS	D-3031	B-1732	Nickel	50
1.092-1.150"	1-1/4"	1-15/64"	Steel	B-1775	HS-51328	B-1775N	Nickel	50
1.315-1.385"	1-1/2"	1-1/2"	Steel	B-1734	HS-51400	B-1734-N	Nickel	50



Top View

B-1889



Bottom View

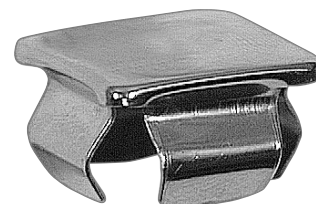
Fits in 1-1/8" O.D. No. 16 or No. 18 gauge square tubing.

SQUARE TUBING TYPE

STEEL - NICKEL PLATED.
FIT SECURELY AND NEATLY.

SPAENAUR No.	16-18 ga. Tubing O.D. Size
B-1974	3/4"
B-1975	13/16"
B-1976	7/8"

Unit Package 50 (One Number)



P.C. 243

ASSEMBLED TUBE CLOSURES

Unit Package Quantity
20 (One Number)

Round Style



*Round Style

with washer
(Provides Flange on Tube End)



Square Style



SPAENAUR No.	Use With Tube O.D.	Tube Wall Thickness	Base Material	Base Finish
112-224	1" round	16-18 ga.	Black NYLON	—
112-227	5/8" round	16-18 ga.	Case Hardened Steel	Zinc Pltd.
112-228	3/4" round	16-18 ga.	Case Hardened Steel	Nickel Pltd.
112-230	13/16" round	16-18 ga.	Case Hardened Steel	Nickel Pltd.
112-232	7/8" round	16-18 ga.	Case Hardened Steel	Nickel Pltd.
112-234	1" round	16-18 ga.	Case Hardened Steel	Nickel Pltd.
112-236	1-1/8" round	16-18 ga.	Case Hardened Steel	Nickel Pltd.
112-237	1-1/4" round	16-18 ga.	Case Hardened Steel	Nickel Pltd.
*112-238	1" round	14-16 ga.	Case Hardened Steel	Nickel Pltd.
with 1-1/2" washer				
*112-239	1-1/4" round	16-18 ga.	Case Hardened Steel	Nickel Pltd.
with 1-3/4" washer				
112-225	1" square	16-18 ga.	Black NYLON	—
112-226	1-1/8" square	16-18 ga.	Black NYLON	—
112-229	3/4" square	16-18 ga.	Case Hardened Steel	Nickel Pltd.
112-231	13/16" square	16-18 ga.	Case Hardened Steel	Nickel Pltd.
112-233	7/8" square	16-18 ga.	Case Hardened Steel	Nickel Pltd.
112-235	1" square	16-18 ga.	Case Hardened Steel	Nickel Pltd.

CATALOG 13