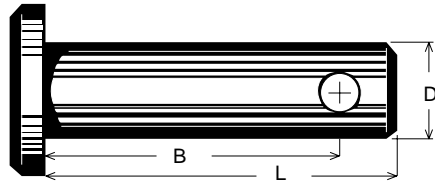


C-1008/C-1018 Grade

STEEL

Case **HARDENED**

Finish - Zinc Chromate or Dichromate (our option)



Cross-drilled & counter-sunk for cotter pin.

See page E49 for COTTER PINS

SAE Standard Sizes

SPAENAUR No.	Diameter D	Length Under Head		Hole Diameter	Use Cotter Pin	Unit Package Quantity
		B	L			
233-002	3/16"	0.504"-0.484"	0.580"	.080"	1/16"	100
233-003	1/4"	0.692"-0.672"	0.780"	.080"	1/16"	100
233-004	5/16"	0.832"-0.812"	0.940"	.111"	3/32"	100
233-005	3/8"	0.958"-0.938"	1.060"	.111"	3/32"	100
233-006	7/16"	1.082"-1.062"	1.190"	.111"	3/32"	50
233-007	1/2"	1.223"-1.203"	1.395"	.143"	1/8"	50
233-008	5/8"	1.473"-1.453"	1.610"	.143"	1/8"	25
233-009	3/4"	1.739"-1.719"	1.910"	.174"	5/32"	25

Other Stock Sizes to IFI Standards except for Hole Dia. and point style.

Hole Dia. Tol. on Pins listed below +.010" to -.005"

233-001	1/8" -.005	3/8"	7/16"	1/16"	3/64"	100
B-1942	3/16"	17/32"	5/8"	3/32"	1/16"	100
233-012		1-1/16"	1-3/16"			100
233-011		1-1/2"	1-5/8"			100
233-010		2-13/32"	2-1/2"			100
B-2036	1/4"	13/32"	1/2"	3/32"	1/16"	100
B-359		3/4"	27/32"			50
B-1718		29/32"	1"			50
B-360		1"	1-3/32"			50
B-1719		1-5/32"	1-1/4"			50
B-1710		1-9/32"	1-3/8"			50
B-1720		1-13/32"	1-1/2"			50
B-1721		1-17/32"	1-5/8"			50
B-1772		1-5/8"	1-3/4"			50
B-1801		1-29/32"	2"			50
B-1638	5/16"	9/16"	3/4"	1/8"	3/32"	50
B-1711		19/32"	3/4"			50
233-018		21/32"	27/32"			50
B-1773		23/32"	13/16"			50
1052		27/32"	15/16"			50
B-1712		13/16"	31/32"			50
1057		7/8"	1"			50
B-361		15/16"	1-1/16"			50
B-362		1"	1-1/8"			50
B-363		1-1/8"	1-1/4"			50
1058		1-1/4"	1-3/8"			50
B-364		1-3/8"	1-1/2"			50
B-365		1-7/16"	1-9/16"			50
B-367		1-9/16"	1-11/16"			50
1056		1-5/8"	1-3/4"			50
B-368		1-3/4"	1-7/8"			50
B-1971		2-19/32"	2-3/4"			50
Cont'd. next page						

CATALOG 13