

FINISHING (SCREW) WASHERS

ORDER BY SPAENAUR NUMBERS LISTED BELOW

Unit Pkg. 100

COUNTERSUNK



†7/8" O.D.

Screw Size	Outside Diameter	BRASS	BRASS NIC. PL.	STEEL PLAIN	STEEL NIC. PL.	18-8 STAINLESS	Nylon O.D.	NATURAL 6/6 NYLON	BLACK 6/6 NYLON
No. 4	25/64"	7141B	7141			W-2073			
No. 5	13/32"					W-370NP			
No. 6	7/16"	7143B	7143			W-371NP	.437"	W-5008	644-102
No. 8	17/32"	7145B	7145			W-372NP	.510"	W-5009	644-103
No. 9	17/32"	7146B	7146						
No. 10	19/32"	7147B	7147			W-255NP	.575"	W-5010	644-105
No. 12	11/16"	7148B	7148			W-2011	.609"		
1/4"	25/32"	7149B	7149			W-374NP	.683"	W-5011	644-107
9/32"	25/32"	7150B	7150						
5/16"	15/16"	7151B	7151			†W-375NP			
3/8"	1-1/8"	7153B	7153						

FLUSH TYPE



No. 4	19/64"								
No. 5	19/64"								
No. 6	11/32"	7137B	7137						
No. 6	.358"					W-2015			
No. 8	3/8"	7138B	7138						
No. 10	15/32"	7139B	7139			W-254	W-2017		
No. 12	9/16"	7140B	7140						
No. 14	5/8"	W-539	W-539N						
		P.C. 643	P.C. 643	P.C. 641	P.C. 641	P.C. 642		P.C. 644	P.C. 644



ASSORTMENT B-598

Priced Singly

COUNTERSUNK FINISHING WASHERS
Zinc Plated Steel, Stainless Steel, and Brass, Nickel Plated

20 Sizes - 1700 Pieces

Contains sizes to fit countersunk screws - #4 ga. to 9/16" selected from this page.

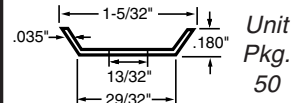
Put up in a Regular Size Steel Drawer.

Shipping Weight 3.18 kg (7 lbs.)

CUP WASHER

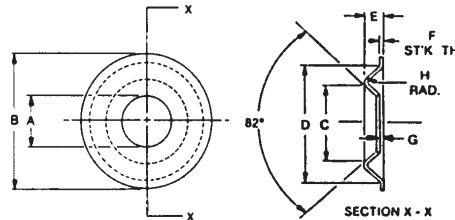
641-001

STEEL, Zinc Plated



Unit Pkg. 50

FLANGE-TYPE COUNTERSUNK WASHERS



UNIT PACKAGE 100

ORDER BY SPAENAUR No's.

STAINLESS STEEL 18-8	BRASS PLAIN	BRASS NICKEL PLTD.	Size Screw	Dimensions in Inches						
				A	B	C	D	E	F	G
642-002	643-002	643-003	#6	.200	.500	.290	.420	.090	.012	.020
W-10	643-004	643-005	#8	.220	.615	.355	.531	.099	.020	.020
642-001	643-006	643-007	#10	.293	.719	.370	.625	.109	.020	.020



P.C. 641

W-163

Wide Flange Ctsk. WASHER

STEEL, Zinc Plated

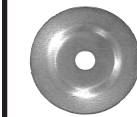
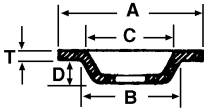
1/4" I.D. 1-3/16" O.D.
.035" Thick

Unit Package 50

FLUSH COUNTERSUNK WASHERS



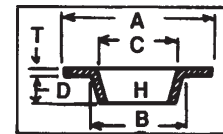
STEEL, Zinc Plated
FOR NO. 8
OVAL HEAD SCREWS
P.C. 641



P.C. 641

RECESSED WASHERS

STEEL, Zinc Plated



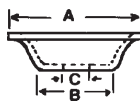
SPAENAUR No.	Approximate Dimensions				Unit Pkg.
	A	B	C	D	T
W-316	1/2"	5/16"	5/16"	5/64"	.035"

SPAENAUR No.	Dimensions in Inches						Unit Pkg.
	A	B	C	D	H	T	
W-314	11/16	9/32	1/4	1/32	5/32	.020	100
W-313	7/8	19/32	3/8	1/16	5/32	.032	100
W-315	1	5/8	9/16	1/16	11/64	.030	100



CUP WASHERS
STEEL, Zinc Plated

Unit Package 100



SPAENAUR No.	Outside Dia. A	Dia. B	Hole C	Material Thickness
W-87	9/16"	3/8"	5/32"	.020"
W-88	3/4"	1/2"	3/16"	.034"



SPAENAUR No. 2000

P.C. 696

SPACER WASHER
for 1/4" Bolt
STEEL, Zinc Plated
Hole Dia. 5/16" Outside Dia. 3/4"
Height 1/4"

Unit Package 50